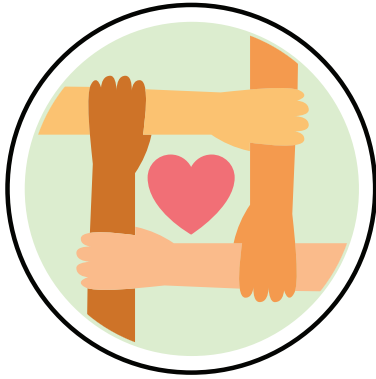




Community Schools serve as hubs that bring families, communities, and partners together to remove barriers to learning. Leveraging the resources of community partners, local governments, and other stakeholders, community schools strive to strengthen connections between home, school, and communities to support student success.



Culture of Belonging, Safety and Care

What this may look like in each community school:

- Implement attendance strategies and incentives co-developed with families
- Offer learning sessions for families focused on strategies to support attendance initiatives
- Offer resource fairs for families and community members, with a focus on social-emotional learning needs
- Develop partnerships supporting mentoring and social-emotional learning efforts
- Student Government/Student Leadership opportunities

How will we measure success?

Short Term Outcomes:

- Increased attendance
- Increased family participation at school events

Long Term Outcomes:

- Increased participation in student-led activities/leadership opportunities
- Decreased chronic absenteeism



Integrated Systems of Support

What this may look like in each community school:

- Conduct needs assessment to understand needs and wants of school community
- Establish regular opportunities for school and community interactions
- Refer students and families to vision, dental, hearing and health supports
- Access to health care supports at the school site
- Establish partnerships to support identified school and community needs

How will we measure success?

Short Term Outcomes:

- Identified partnership gaps via needs assessment
- Increased health care partnerships

Long Term Outcomes:

- Increased utilization and access to health supports
- Decreased tardiness and absenteeism

Continued →

Vision: Students are engaged, connected, and life ready.

HCPSS Community Schools Logic Model, *continued*



Family School Partnership

What this may look like in each community school:

- Build relational trust through positive, individual touch points with families
- Provide opportunities for families to provide feedback and a voice in decision making
- Facilitate professional development for staff focused on family connections and supporting student learning at home
- Create volunteer opportunities and invite families into learning environments
- Provide information and communications to families in their home language

How will we measure success?

Short Term Outcomes:

- Increased connections to Howard County agencies supporting adult learning
- Increased family participation in family-school partnership activities

Long Term Outcomes:

- Increased family representation and participation in decision-making groups
- Increased trust between families and the school



High Quality Instruction and Learning

What this may look like in each community school:

- Offer increased Beyond School Hour/Year Programming
- Facilitate professional learning for staff focused on high-quality, differentiated instruction
- Increase enrichment opportunities for students during the school day
- Provide curriculum that reflects the school community
- Offer professional learning to support data monitoring for interventions

How will we measure success?

Short Term Outcomes:

- Increased number of students participating in Beyond School Hours/Year Programs
- Increased student engagement during instruction

Long Term Outcomes:

- Improved academic indicators, including proficiency and growth measured in ELA/Math

Core Values: Voice • Equity • Empowerment • Transformation