

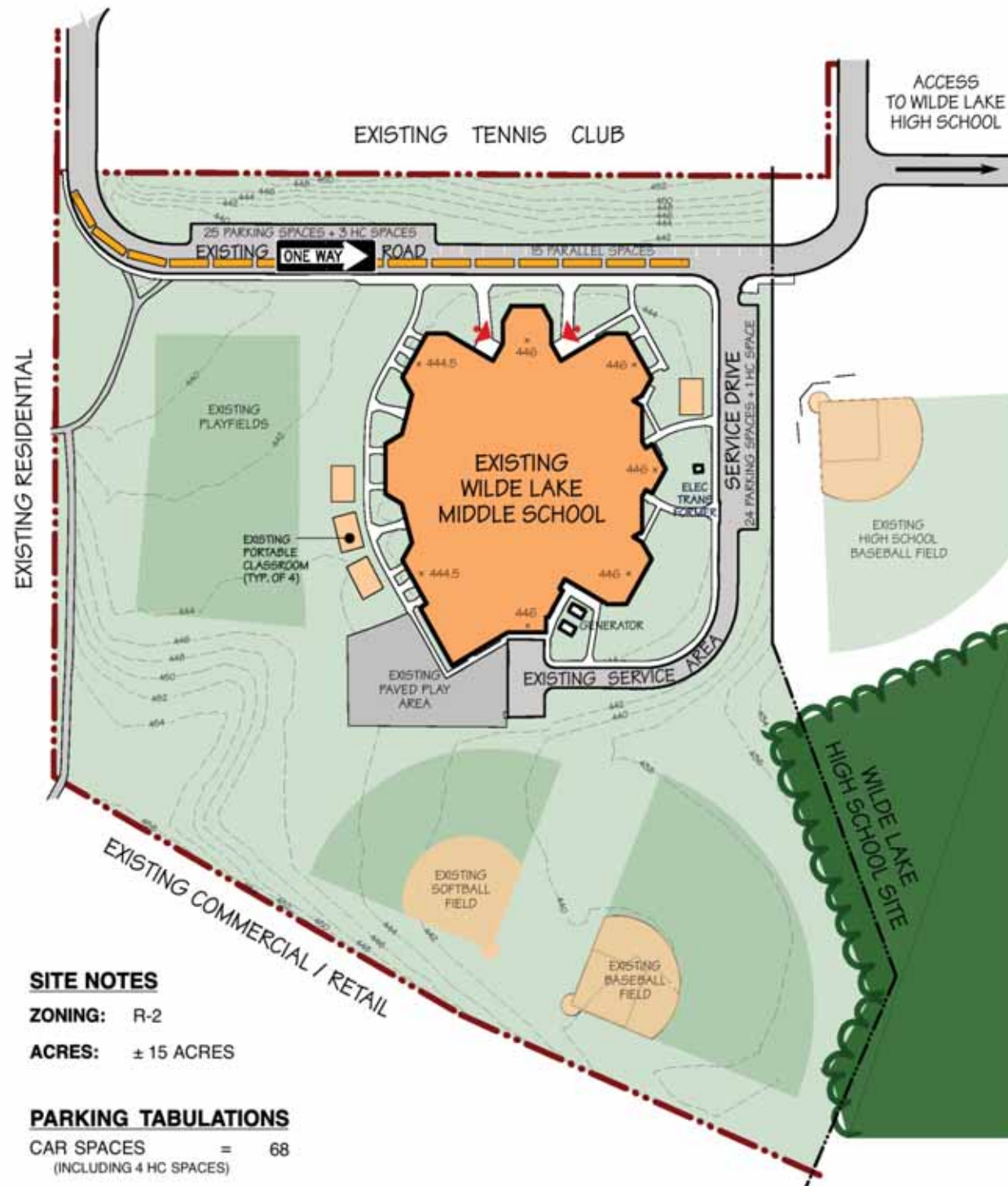
Wilde Lake Middle School Feasibility Study Report

Bruce Gist
Director, School Construction
November 21, 2013

Overview

Study conducted to look @ the feasibility of renovating Wilde Lake MS:

- Three options provided ranging from limited renovation and addition to demolition and replacement of school
- Major items of concern for consideration include increased student population, deficient program spaces, and systemic needs



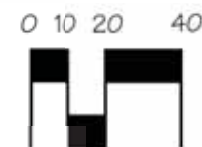
Existing Site Plan

LEGEND

- = ADMINISTRATIVE SPACES
- = GRADES 6-8
- = SCIENCE LABS
- = SPECIAL EDUCATION
- = CENTRAL SUPPORT SPACES
- = ARTS & TECHNOLOGY
- = BUILDING SERVICES
- = STUDENT SUPPORT SPACES







ABBREVIATIONS

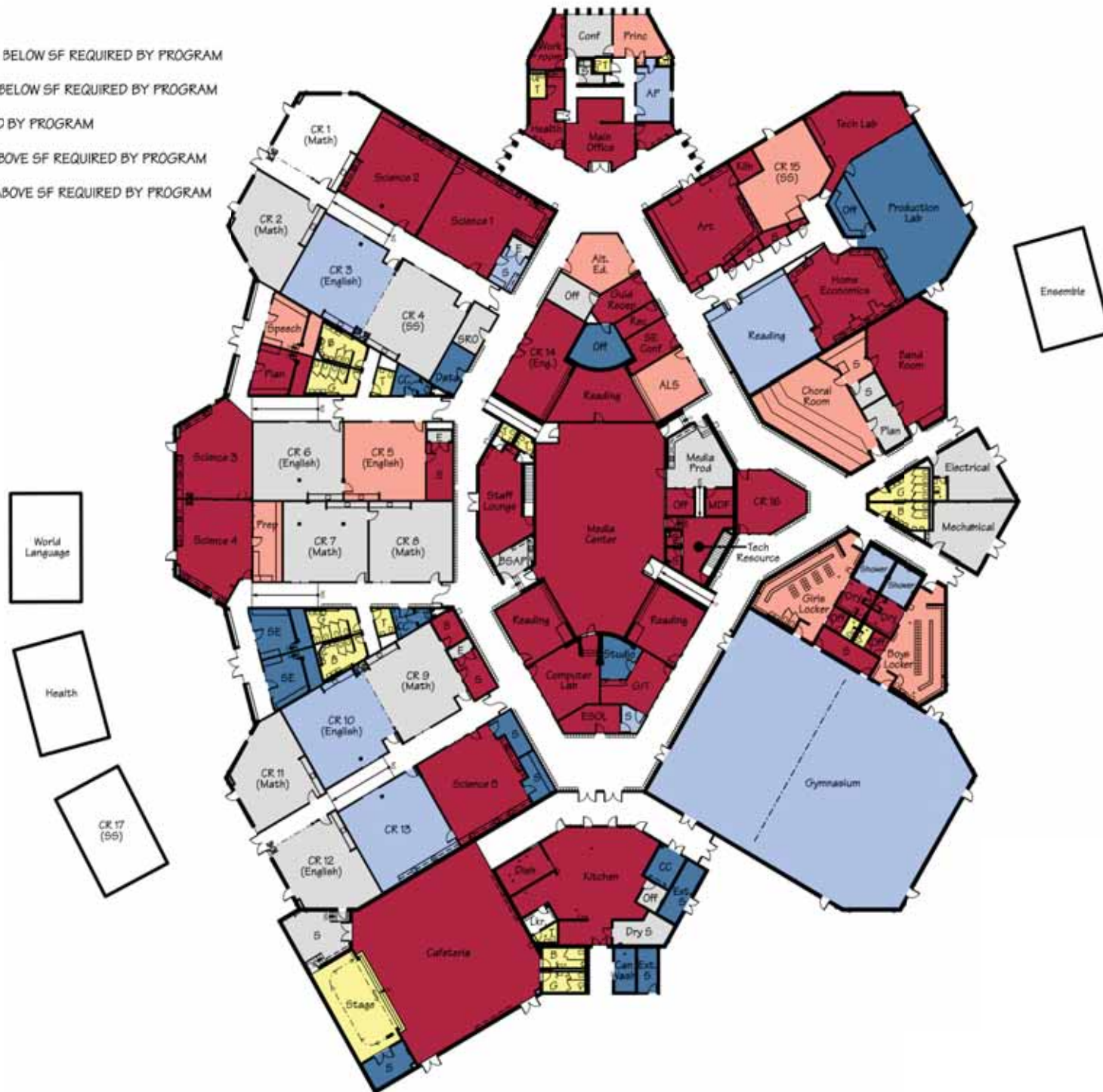
- B BOYS' TOILET ROOM
- CC CUSTODIAL CLOSET
- CR CLASSROOM
- E ELECTRICAL CLOSET
- G GIRLS' TOILET ROOM
- S STORAGE ROOM
- T TOILET ROOM
- MDF MAIN DISTRIBUTION FRAME ROOM



Existing Floor Plan

LEGEND

-  = UNDERSIZED - MORE THAN 20% BELOW SF REQUIRED BY PROGRAM
 = UNDERSIZED - BETWEEN 11-19% BELOW SF REQUIRED BY PROGRAM
 = WITHIN 10% OF THE SF REQUIRED BY PROGRAM
 = OVERSIZED - BETWEEN 11-19% ABOVE SF REQUIRED BY PROGRAM
 = OVERSIZED - MORE THAN 20% ABOVE SF REQUIRED BY PROGRAM
 = NOT ADA COMPLIANT



Scheme 1 - Light Renovations and Addition

Area of Existing Building	70,530 gsf
Area of New Addition	$\pm 24,300$ gsf
Total Area	$\pm 94,830$ gsf

Construction Duration (occupied) 27 months

LEED certification 'Certified' Level

Construction Cost \$ 24,268,453



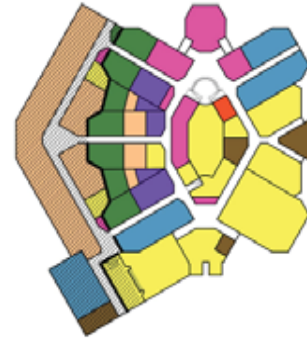
Scheme 2 - Major Renovations and Addition

Area of Existing Building	70,530 gsf
Area of New Addition	$\pm 30,000$ gsf
Total Area	$\pm 100,530$ gsf

Construction Duration (occupied) 27 months

LEED certification 'Certified' Level

Construction Cost \$ 26,051,568



Scheme 3 - New Replacement School

Area of First Floor	68,700 gsf
Area of Second Floor	27,138 gsf
Total Area	95,838 gsf

Construction Duration 27 months

LEED certification 'Gold' Level

Construction Cost \$ 28,225,630





FIRST FLOOR

LEGEND

- = ADMINISTRATIVE SPACES
- = GRADES 6-8
- = SCIENCE LABS
- = SPECIAL EDUCATION
- = CENTRAL SUPPORT SPACES
- = ARTS & TECHNOLOGY
- = BUILDING SERVICES
- = DEPARTMENT OF REC & PARKS

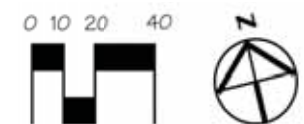
ABBREVIATIONS

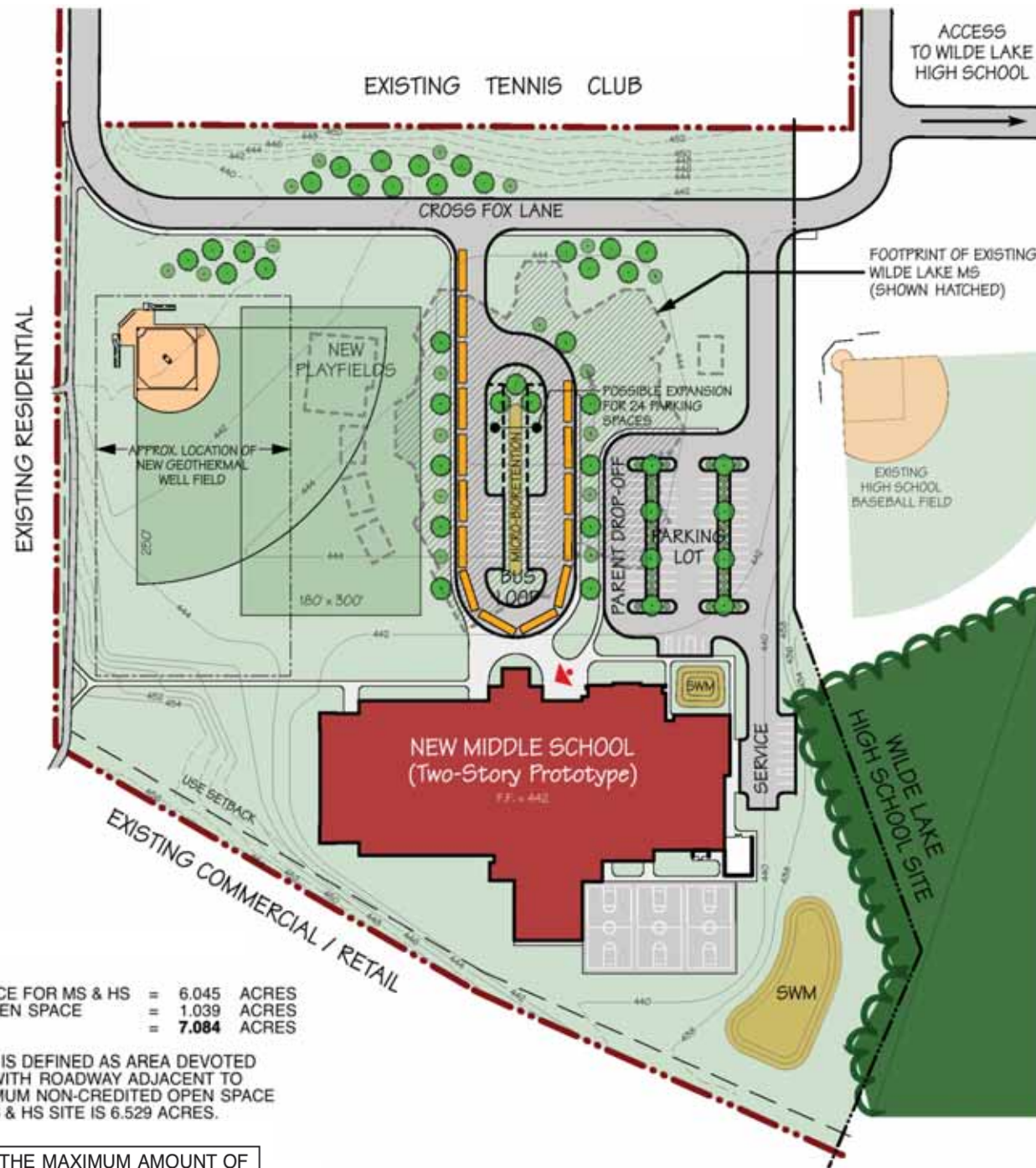
- B BOYS' TOILET ROOM
- CC CUSTODIAL CLOSET
- CR CLASSROOM
- E ELECTRICAL CLOSET
- G GIRLS' TOILET ROOM
- S STORAGE ROOM
- T TOILET ROOM
- MDF MAIN DISTRIBUTION FRAME ROOM
- IDF INTERMEDIATE DISTRIBUTION FRAME ROOM
- SE SPECIAL EDUCATION



SECOND FLOOR

First Floor	=	68,700 GSF
Second Floor	=	27,138 GSF
Area of Proposed Plan	=	95,838 GSF

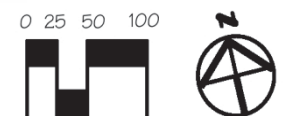




EXISTING NON-CREDITED OPEN SPACE FOR MS & HS	=	6.045	ACRES
PROPOSED NEW NON-CREDITED OPEN SPACE	=	1.039	ACRES
TOTAL NON-CREDITED OPEN SPACE	=	7.084	ACRES

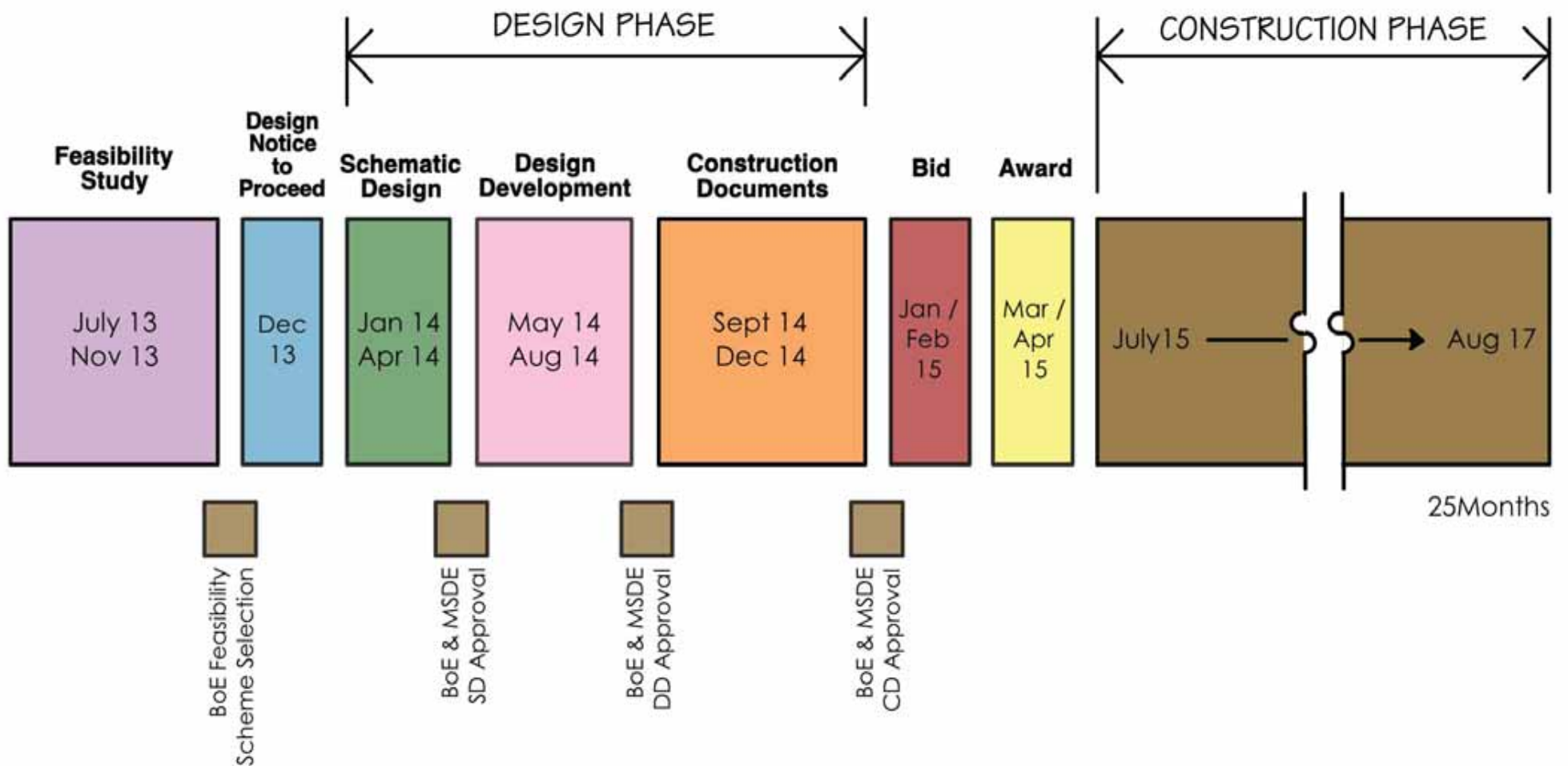
NOTE: NON-CREDITED OPEN SPACE IS DEFINED AS AREA DEVOTED TO PARKING AREAS ALONG WITH ROADWAY ADJACENT TO THE PARKING SPACES. MAXIMUM NON-CREDITED OPEN SPACE ALLOWED FOR COMBINED MS & HS SITE IS 6.529 ACRES.

* THIS SCHEME EXCEEDS THE MAXIMUM AMOUNT OF NON-CREDITED OPEN SPACE. A VARIANCE WILL BE REQUIRED.



Probable State and Local Funding Levels

- Renovation/Addition (Option 1):
 - \$8.2M State; \$22.5M Local
- Replacement School (Net Zero)
 - \$14.1M State, \$2.5M MEA, \$20M Local
 - State likely to approve based on energy cost savings alone



Recommendation

- Proceed with planning of a replacement school for Wilde Lake MS
- Contingent upon state approval, schematic design presentation scheduled for April 2014
 - Construction award July 2015
 - Construction completion August 2017