

Wilde Lake Middle School Replacement School

Schematic Design Report

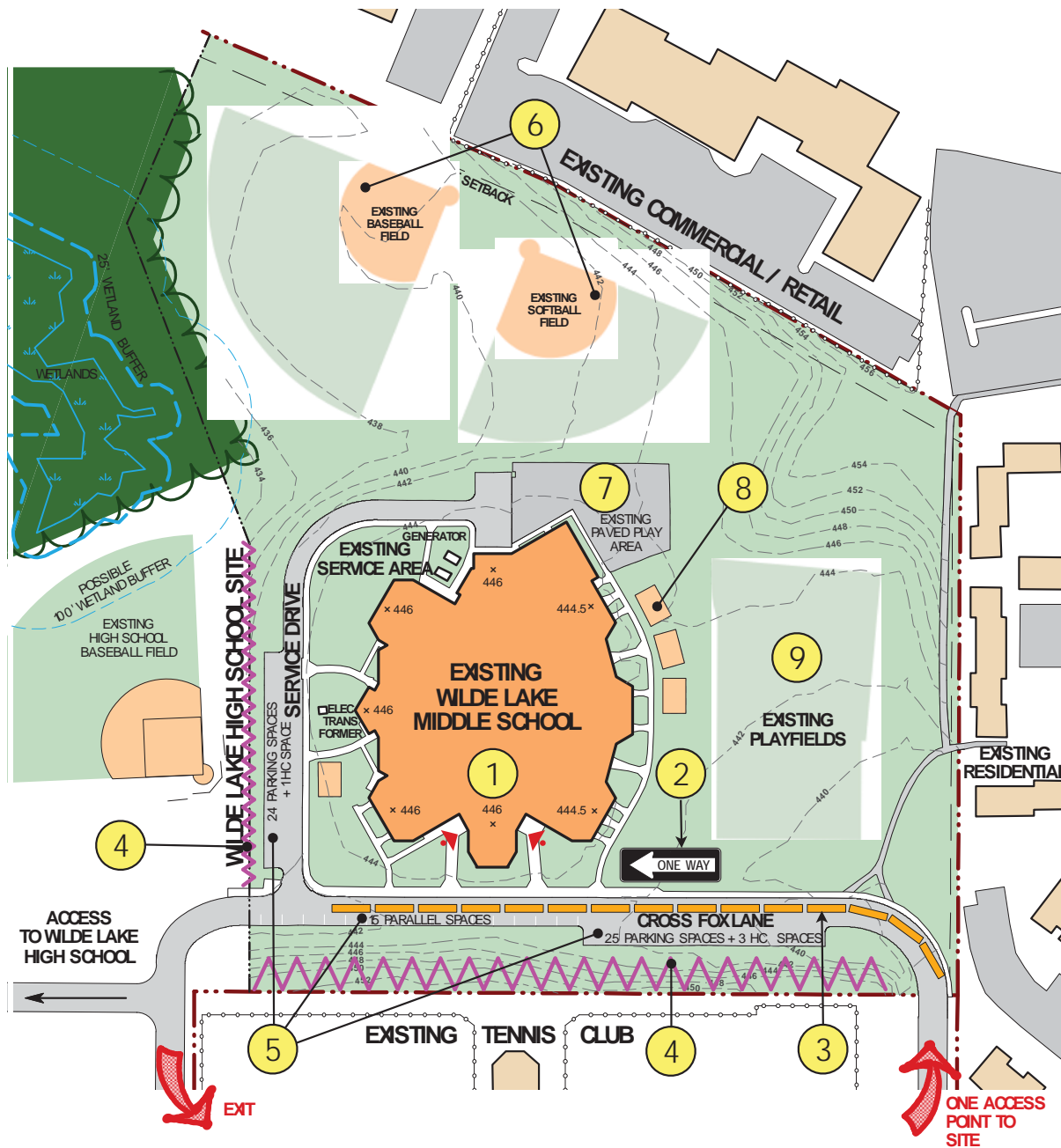
Bruce Gist

Director, School Construction

April 10, 2014

Project Overview

- Sixth use of the prototype middle school plans based on the 1994 Middle School Educational Specifications (updated at Thomas Viaduct MS)
- Second LEED 'Gold' project and our first Net – Zero Energy School
- Unique opportunity to work collaboratively with MEA in designing the first Net-Zero school in the state and the thirteenth such school in the country



SITE NOTES

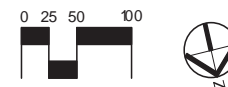
ZONING: NT

ACRES: ± 15 ACRES

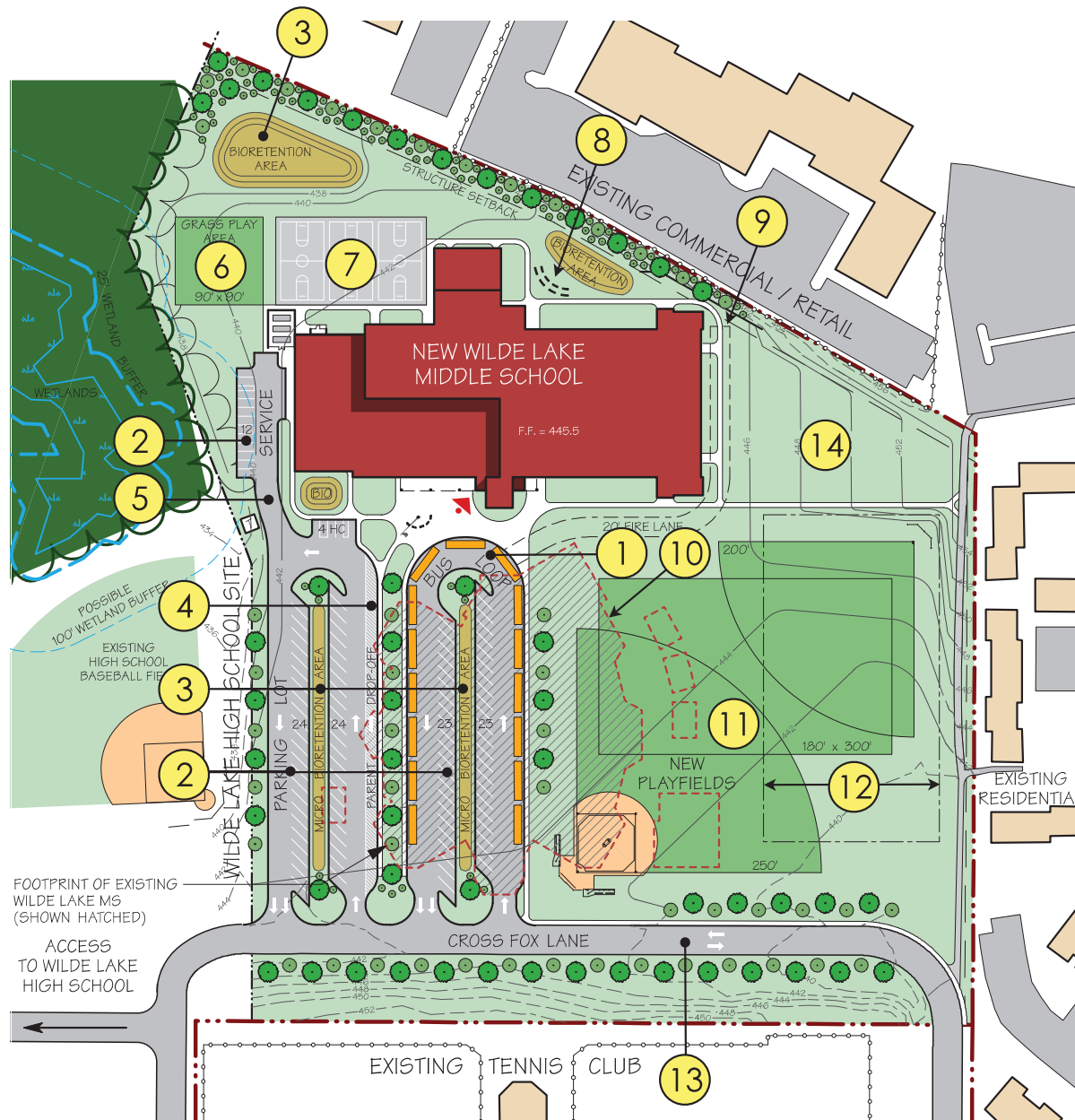
PARKING TABULATIONS

CAR SPACES = 68
(INCLUDING 5 HC SPACES)

BUS SPACES = 15



Existing Site Plan



SITE NOTES

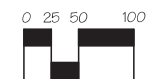
ZONING: NT

ACRES: ± 15 ACRES

PARKING TABULATIONS

CAR SPACES = 110
(INCLUDING 5 HC SPACES)

BUS SPACES = 15



Final Site Plan

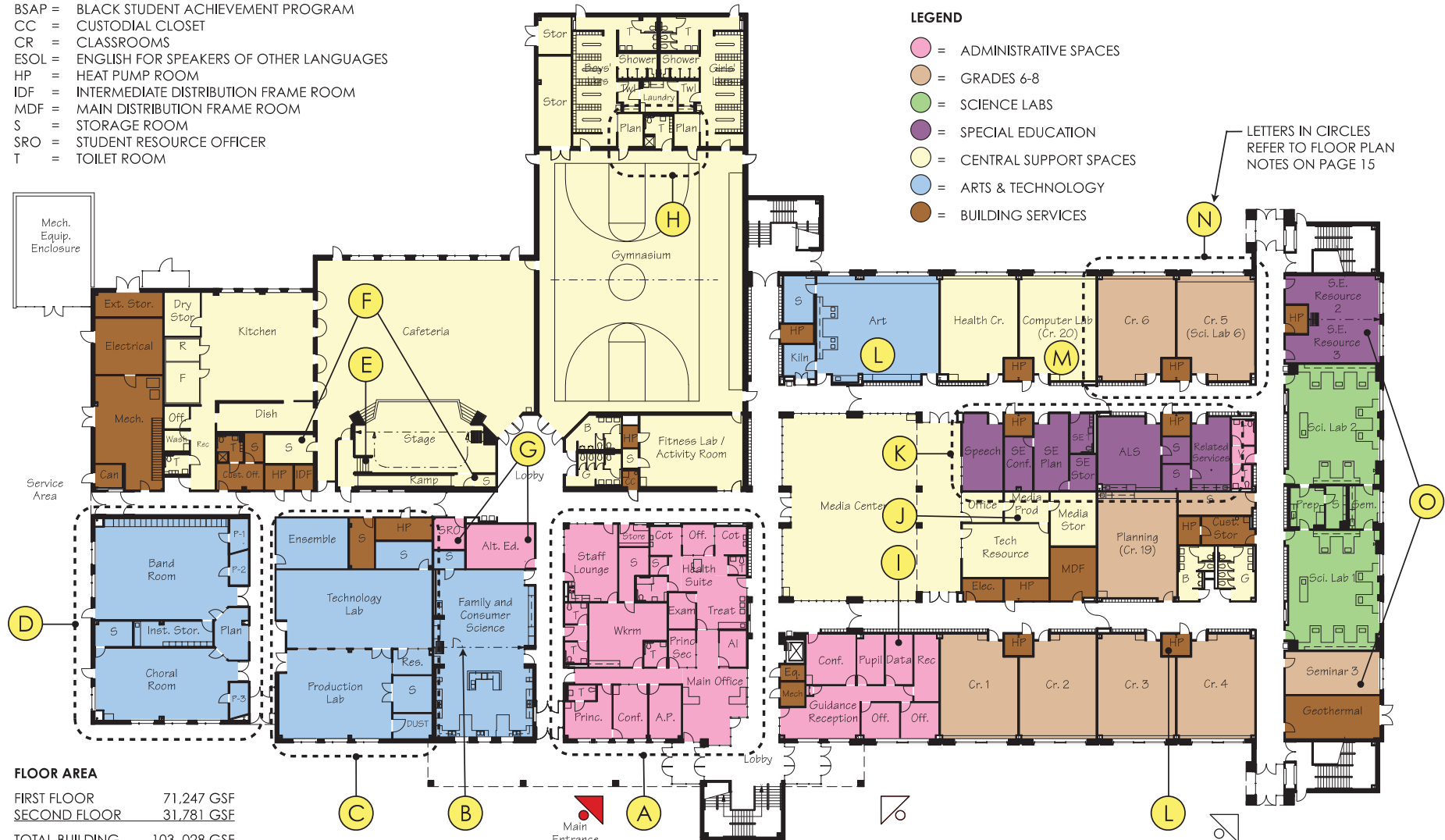
ABBREVIATIONS

ALS	=	ACADEMIC LIFE SKILLS
BSAP	=	BLACK STUDENT ACHIEVEMENT PROGRAM
CC	=	CUSTODIAL CLOSET
CR	=	CLASSROOMS
ESOL	=	ENGLISH FOR SPEAKERS OF OTHER LANGUAGES
HP	=	HEAT PUMP ROOM
IDF	=	INTERMEDIATE DISTRIBUTION FRAME ROOM
MDF	=	MAIN DISTRIBUTION FRAME ROOM
S	=	STORAGE ROOM
SRO	=	STUDENT RESOURCE OFFICER
T	=	TOILET ROOM

LEGEND

- ADMINISTRATIVE SPACES
- GRADES 6-8
- SCIENCE LABS
- SPECIAL EDUCATION
- CENTRAL SUPPORT SPACES
- ARTS & TECHNOLOGY
- BUILDING SERVICES

LETTERS IN CIRCLES REFER TO FLOOR PLAN NOTES ON PAGE 15



FLOOR AREA

FIRST FLOOR	71,247 GSF
SECOND FLOOR	31,781 GSF
TOTAL BUILDING	103,028 GSF

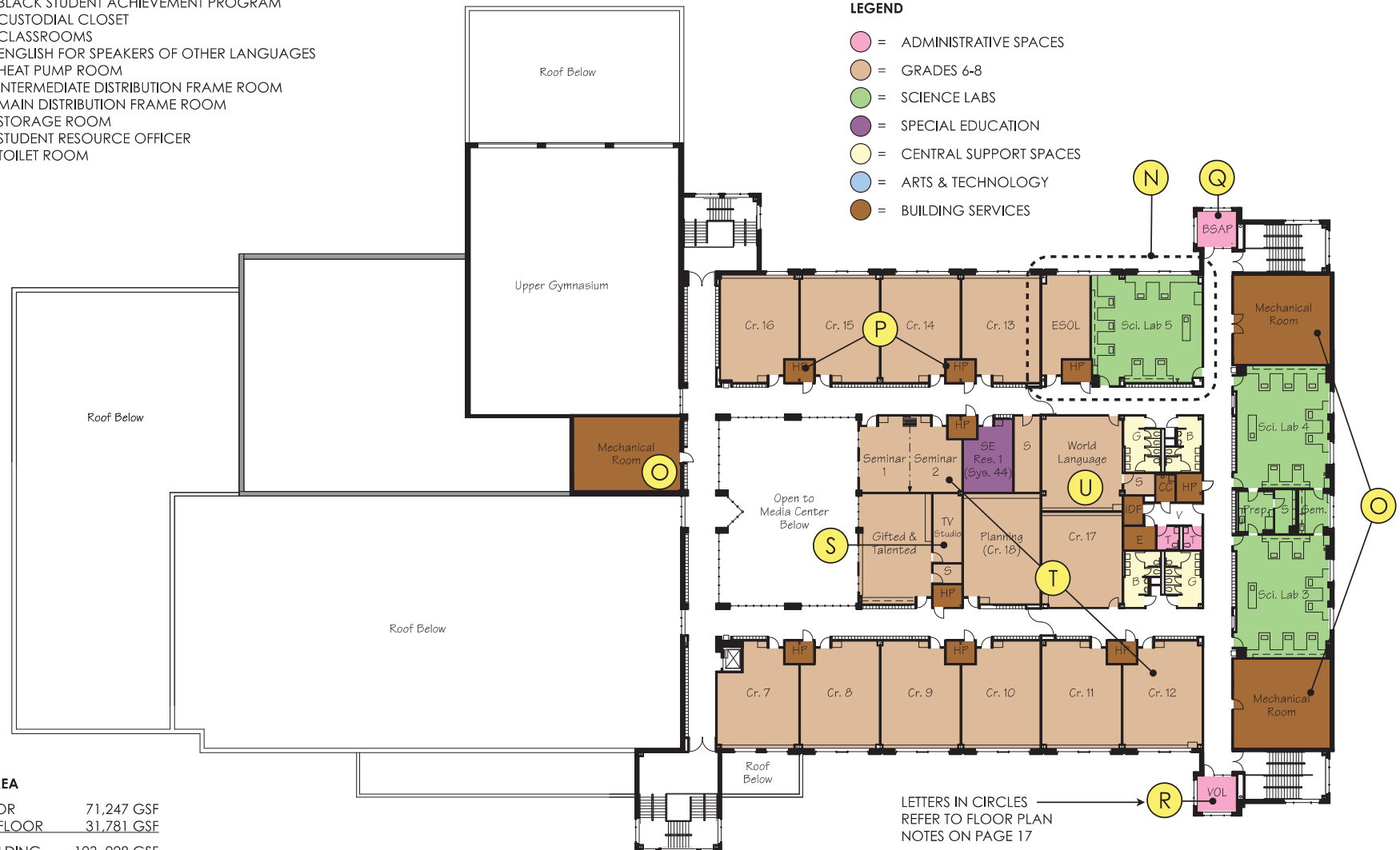
First Floor Plan

ABBREVIATIONS

ALS	=	ACADEMIC LIFE SKILLS
BSAP	=	BLACK STUDENT ACHIEVEMENT PROGRAM
CC	=	CUSTODIAL CLOSET
CR	=	CLASSROOMS
ESOL	=	ENGLISH FOR SPEAKERS OF OTHER LANGUAGES
HP	=	HEAT PUMP ROOM
IDF	=	INTERMEDIATE DISTRIBUTION FRAME ROOM
MDF	=	MAIN DISTRIBUTION FRAME ROOM
S	=	STORAGE ROOM
SRO	=	STUDENT RESOURCE OFFICER
T	=	TOILET ROOM

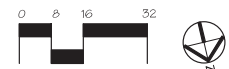
LEGEND

- ADMINISTRATIVE SPACES
- GRADES 6-8
- SCIENCE LABS
- SPECIAL EDUCATION
- CENTRAL SUPPORT SPACES
- ARTS & TECHNOLOGY
- BUILDING SERVICES

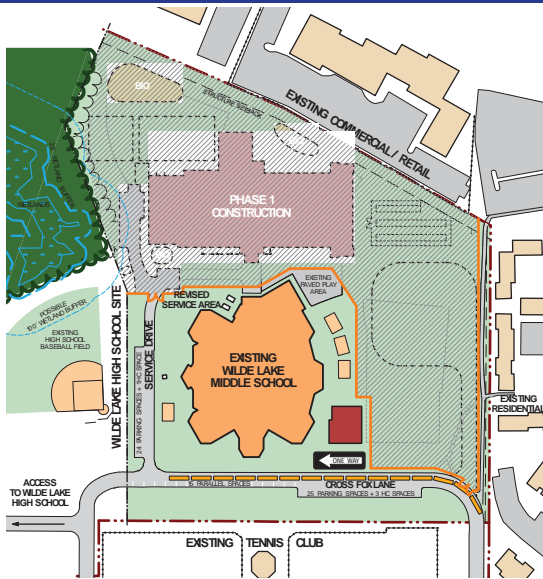


FLOOR AREA

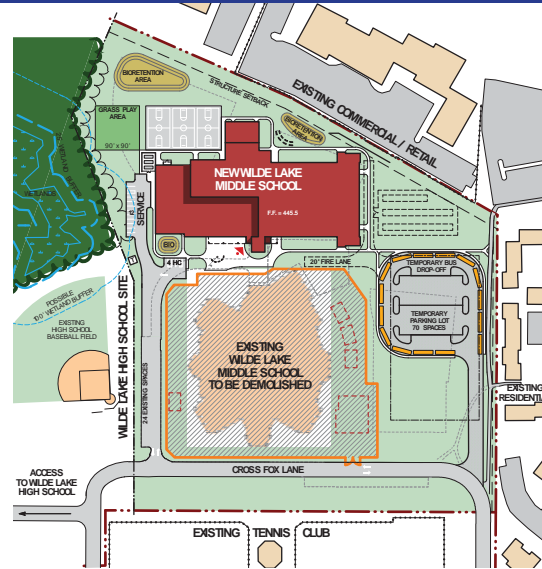
FIRST FLOOR	71,247 GSF
SECOND FLOOR	31,781 GSF
TOTAL BUILDING	103,028 GSF



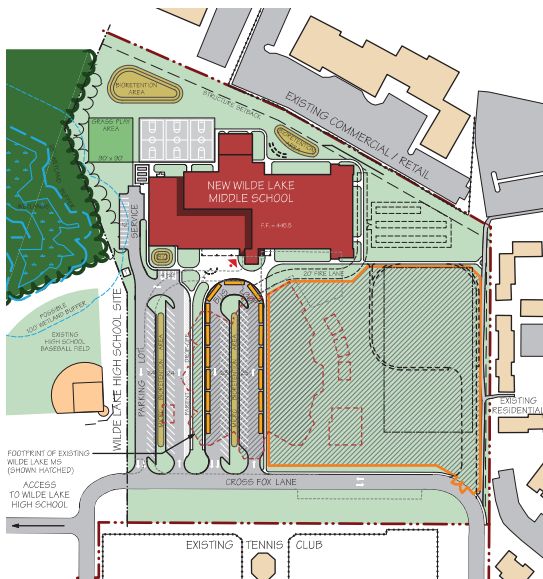
Second Floor Plan



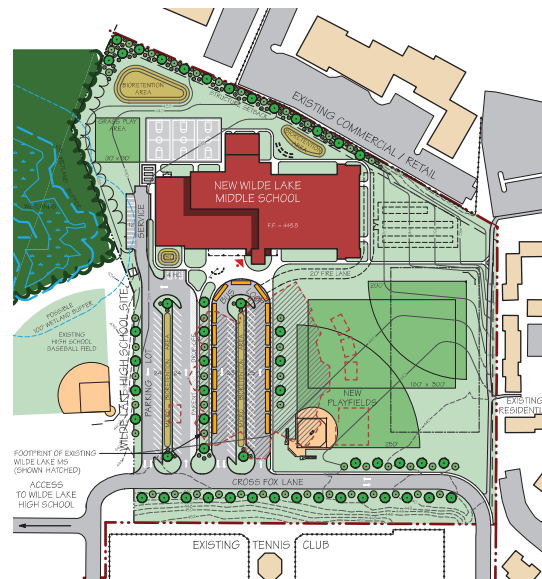
Phase 1



Phase 2



Phase 3



Final Site Plan

Existing Wilde Lake Middle School Building	66 kBTU/sf
Base Building per ASHRAE 90.1-2007/ LEED Minimum	51 kBTU/sf
Middle School No.20	38 kBTU/sf
Net Zero Goal Wilde Lake Middle School Replacement Building	28 kBTU/sf

Energy Use Index Comparison



Architectural Character

Summary

- Schedule (contingent upon state and local funding)
 - Design Development (DD) report July 2014
 - Construction Documents (CD) report November 2014
 - Receive bids March 2015
 - Construction starts May 2015
 - Completion August 2017
- Request approval to move into DD phase