

# Wilde Lake Middle School Replacement School

Design Development Report

Bruce Gist

Acting Executive Director of Facilities,  
Planning, and Management

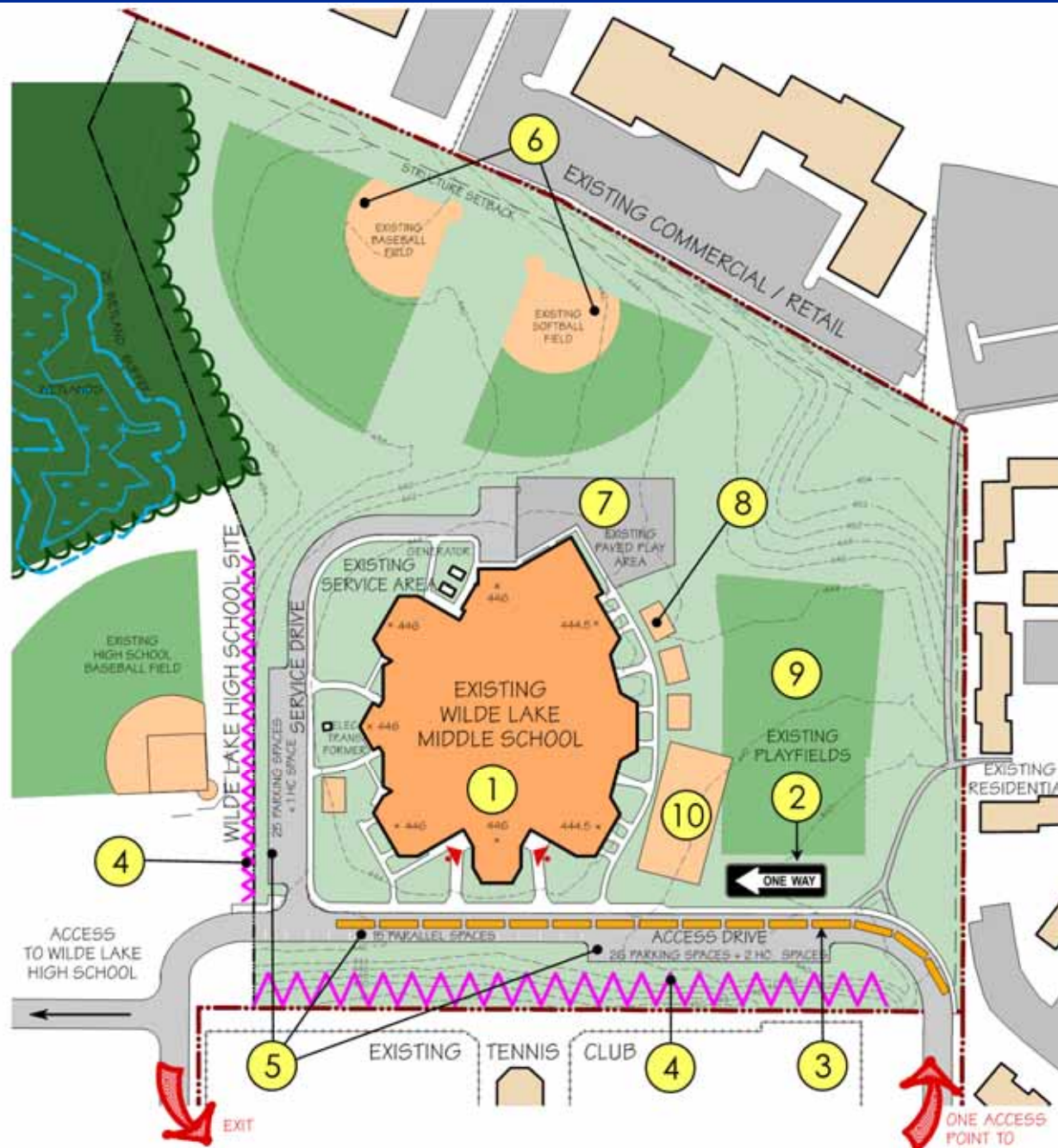
August 14, 2014

# Project Updates

- Reconfigured the health suite for better handicap accessibility and mobility
- Enlarged the ensemble room and revised the storage areas in the music suite to better accommodate the program
- Added an environmental dashboard to allow access to data on the building's energy usage
- Provided additional water service per Howard County Planning and Zoning

# Project Updates (con't)

- Reconfigured the guidance suite to provide proper size and adjacencies to applicable areas
- Created an enlarged centralized mechanical room to house all rooftop HVAC equipment in the building
- Added two additional classrooms on the second floor to accommodate future enrollment



#### SITE NOTES

ZONING: NT (NEW TOWN)

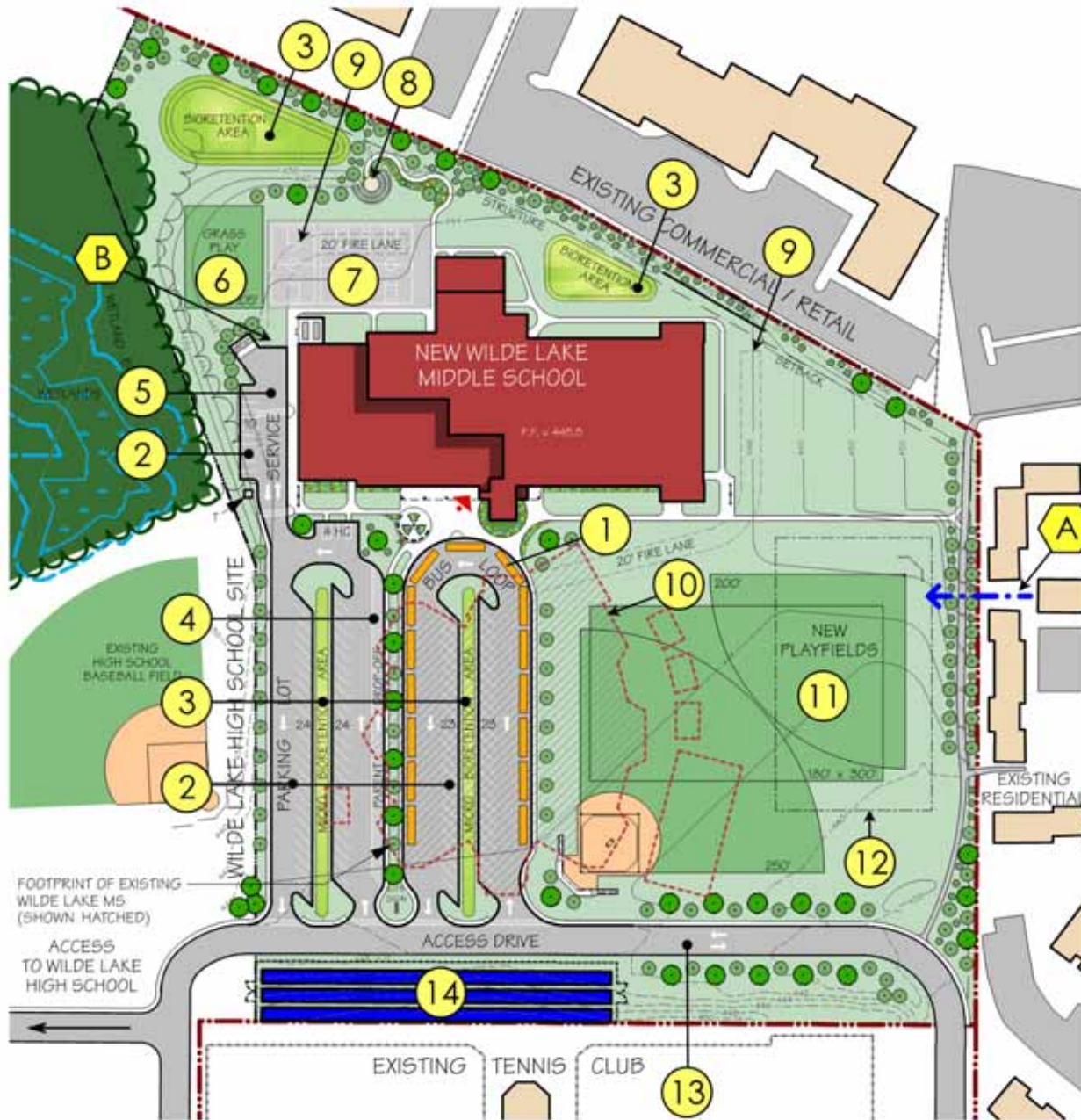
ACRES: 14.9 ACRES

#### PARKING TABULATIONS

CAR SPACES = 69  
(INCLUDING 3 HC SPACES)

BUS SPACES = 15

Existing Site Plan



## SITE NOTES

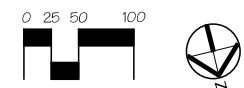
ZONING: NT (NEW TOWN)

ACRES: 14.9 ACRES

### PARKING TABULATIONS

CAR SPACES = 108  
(INCLUDING 5 HC SPACES)

BUS SPACES = 15



## Final Site Plan



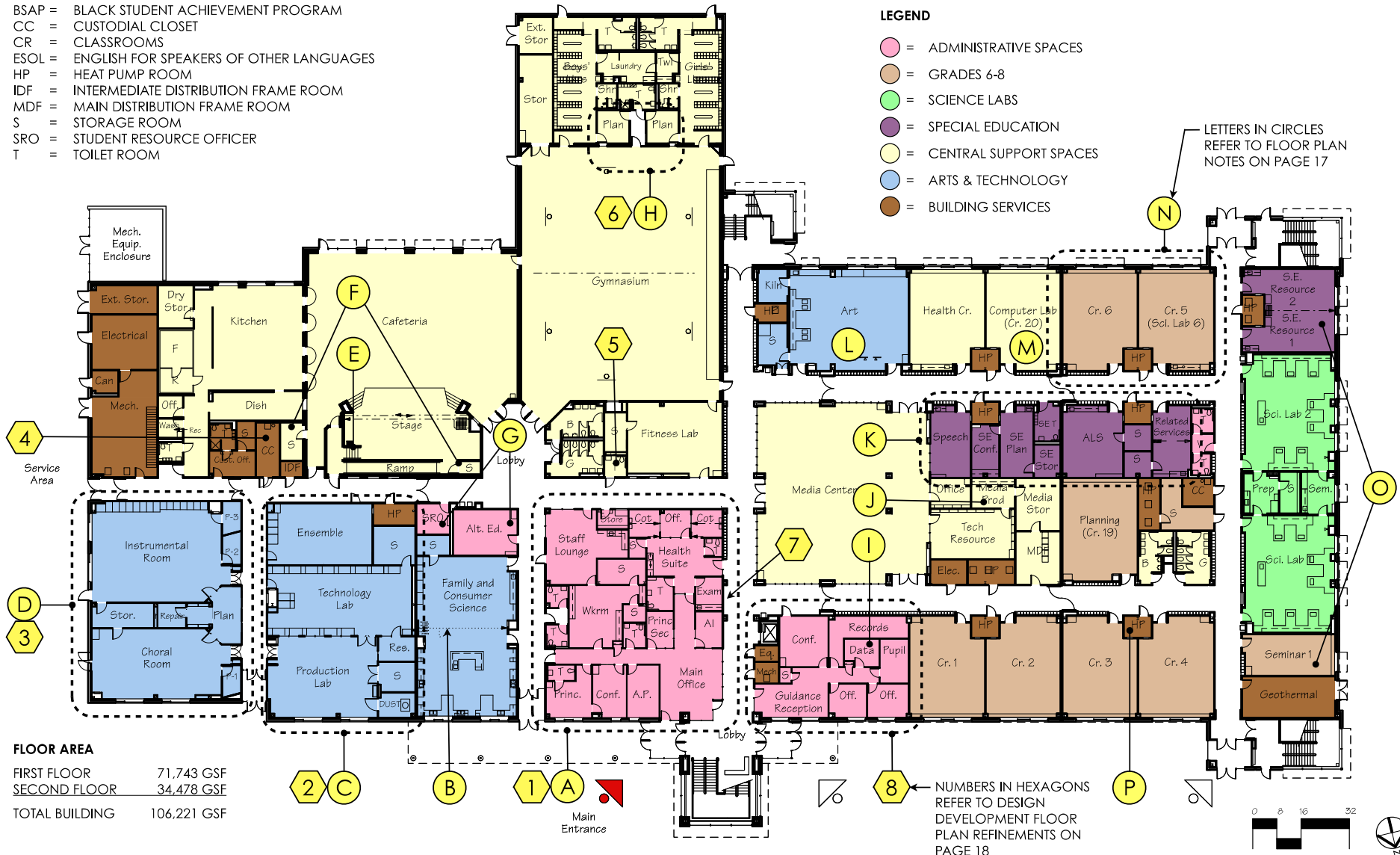
# ABBREVIATIONS

ALS = ACADEMIC LIFE SKILLS  
 BSAP = BLACK STUDENT ACHIEVEMENT PROGRAM  
 CC = CUSTODIAL CLOSET  
 CR = CLASSROOMS  
 ESOL = ENGLISH FOR SPEAKERS OF OTHER LANGUAGES  
 HP = HEAT PUMP ROOM  
 IDF = INTERMEDIATE DISTRIBUTION FRAME ROOM  
 MDF = MAIN DISTRIBUTION FRAME ROOM  
 S = STORAGE ROOM  
 SRO = STUDENT RESOURCE OFFICER  
 T = TOILET ROOM

# LEGEND

(Pink Circle) = ADMINISTRATIVE SPACES  
 (Brown Circle) = GRADES 6-8  
 (Green Circle) = SCIENCE LABS  
 (Purple Circle) = SPECIAL EDUCATION  
 (Yellow Circle) = CENTRAL SUPPORT SPACES  
 (Blue Circle) = ARTS & TECHNOLOGY  
 (Orange Circle) = BUILDING SERVICES

LETTERS IN CIRCLES  
 REFER TO FLOOR PLAN  
 NOTES ON PAGE 17










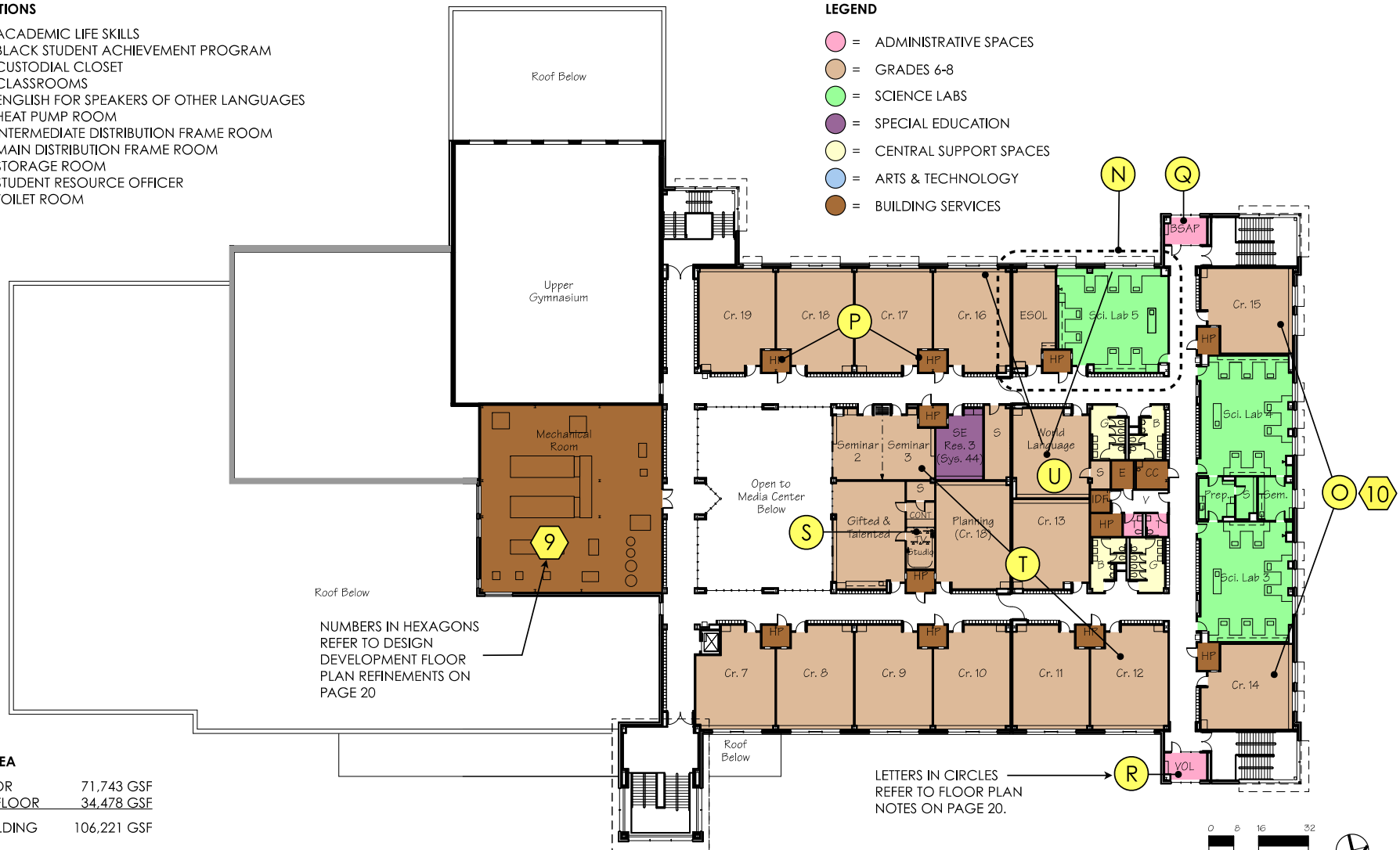
# First Floor Plan

## ABBREVIATIONS

ALS = ACADEMIC LIFE SKILLS  
BSAP = BLACK STUDENT ACHIEVEMENT PROGRAM  
CC = CUSTODIAL CLOSET  
CR = CLASSROOMS  
ESOL = ENGLISH FOR SPEAKERS OF OTHER LANGUAGES  
HP = HEAT PUMP ROOM  
IDF = INTERMEDIATE DISTRIBUTION FRAME ROOM  
MDF = MAIN DISTRIBUTION FRAME ROOM  
S = STORAGE ROOM  
SRO = STUDENT RESOURCE OFFICER  
T = TOILET ROOM

### LEGEND

-  = ADMINISTRATIVE SPACES
-  = GRADES 6-8
-  = SCIENCE LABS
-  = SPECIAL EDUCATION
-  = CENTRAL SUPPORT SPACES
-  = ARTS & TECHNOLOGY
-  = BUILDING SERVICES



**FLOOR AREA**

FIRST FLOOR	71,743 GSF
<u>SECOND FLOOR</u>	<u>34,478 GSF</u>
TOTAL BUILDING	106,221 GSF

## Second Floor Plan

Existing Wilde Lake Middle School Building	<b>66</b> kBTU/sf
Base Building per ASHRAE 90.1-2007/ LEED Minimum	<b>51</b> kBTU/sf
Middle School No.20	<b>38</b> kBTU/sf
Net Zero Goal Wilde Lake Middle School Replacement Building	<b>25</b> kBTU/sf

Energy Use Index Comparison



Base Building per ASHRAE 90.1-2007/ LEED Minimum	<b>1.2</b> Watt/sf
Middle School No.20	<b>0.76</b> Watt/sf
Net Zero Goal Wilde Lake Middle School	<b>0.50</b> Watt/sf

### Light Power Density Comparison



Choral Room      Tech Ed      Family and Consumer Sciences      Administrative Suite      Main Entrance      Guidance Suite      Two-Story Academic Wing      Stair

**Front Elevation (North - Facing)**



Paved Play Area  
Locker Rooms Beyond      Outdoor Equipment Enclosure      Electrical Room      Mechanical Room      Entrance      Band Room      Choral Room      Parking Lot  
Bus Loop Beyond

**Side Elevation (East - Facing)**



Stair

Two-Story Academic Wing

Stair

Locker Rooms  
Gymnasium Beyond

Cafeteria

Kitchen

Paved Play Area

**Rear Elevation** (South - Facing)



Playfields

Main Entrance  
Beyond

Stair

Science Classrooms

Stair

**Side Elevation** (West - Facing)

# Total Project Budget

Base Construction Estimate *	\$34,846,856
<u>(includes 3% CD construction contingency \$1,045,406)</u>	
Architect/Engineering Fee	\$2,380,830
Construction Management Fee	\$2,100,000
Related Costs	\$1,582,808
Project Contingency	\$1,582,808
Equipment and Technology	\$2,200,000
 Project Total Budget	 \$44,693,302
 Funding Projections	
FY14	\$2,658,000
FY15	\$8,200,000
FY16	\$26,279,000
MEA Grant Contribution	\$2,773,000

\*Prevailing wage requirements have been included in the cost

# Summary

- Schedule (contingent upon state and local funding)
  - Construction documents report December 2014
  - Receive bids March 2015
  - Construction starts May 2015
  - Completion August 2017
- Request approval to move into CD phase