

Wilde Lake Middle School Replacement School

Construction Documents Report

Scott Washington

Director, School Construction

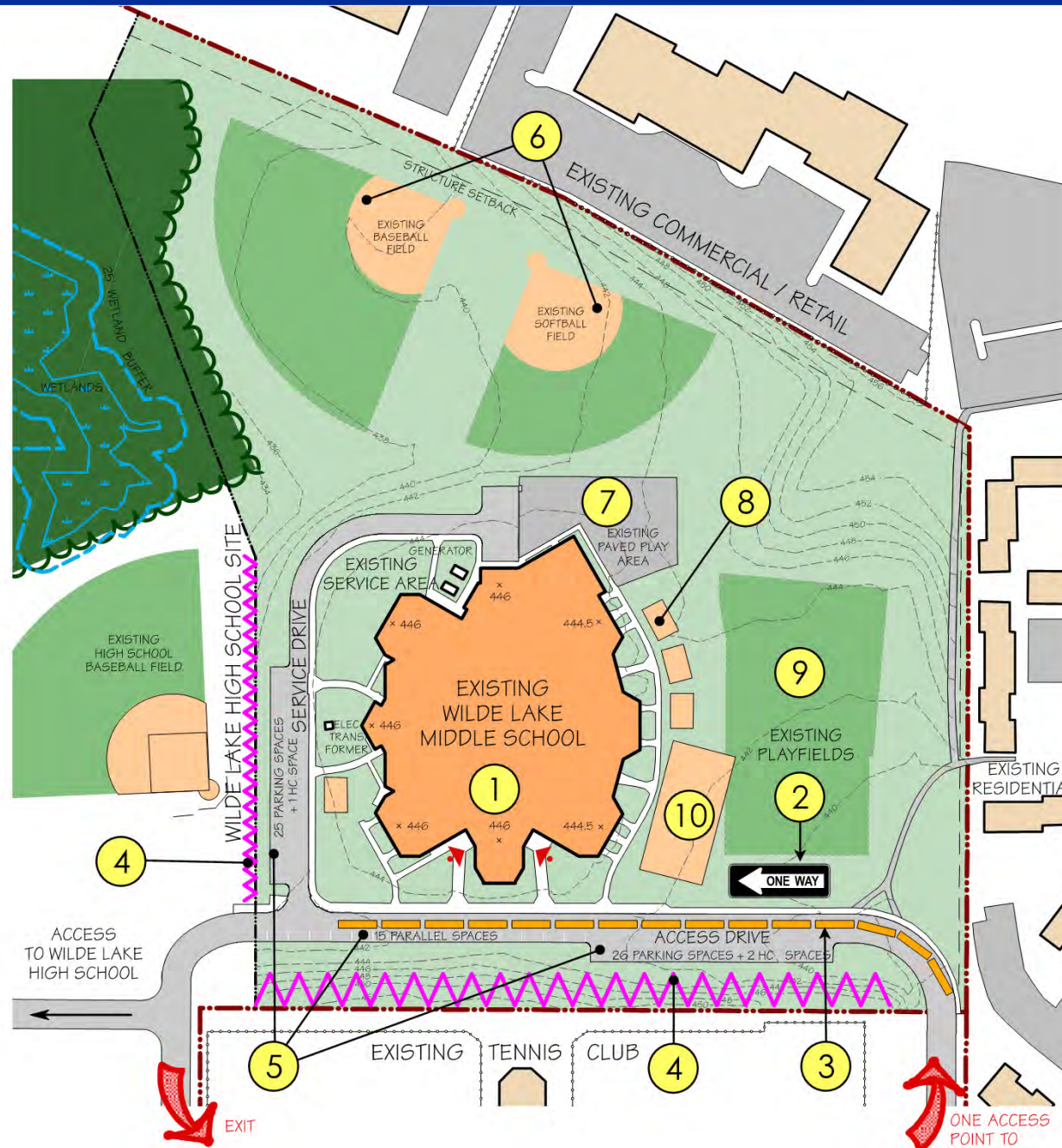
December 15, 2014

Project Updates

- Reconfigured the locker room support spaces
- Removed dust collection system and modified storage room area accordingly
- Modified glazing at media center to provide area for permanent projectors and boards at two instructional areas
- Increased volume of sunshades throughout

Project Updates (con't)

- Provide continuous paved pathways for students of both campus schools
- Provide two separate practice fields in lieu of second baseball field
- Provide an outdoor classroom area in rear of school
- Worked with neighborhood associations to establish future neighborhood pathways



SITE NOTES

ZONING: NT (NEW TOWN)

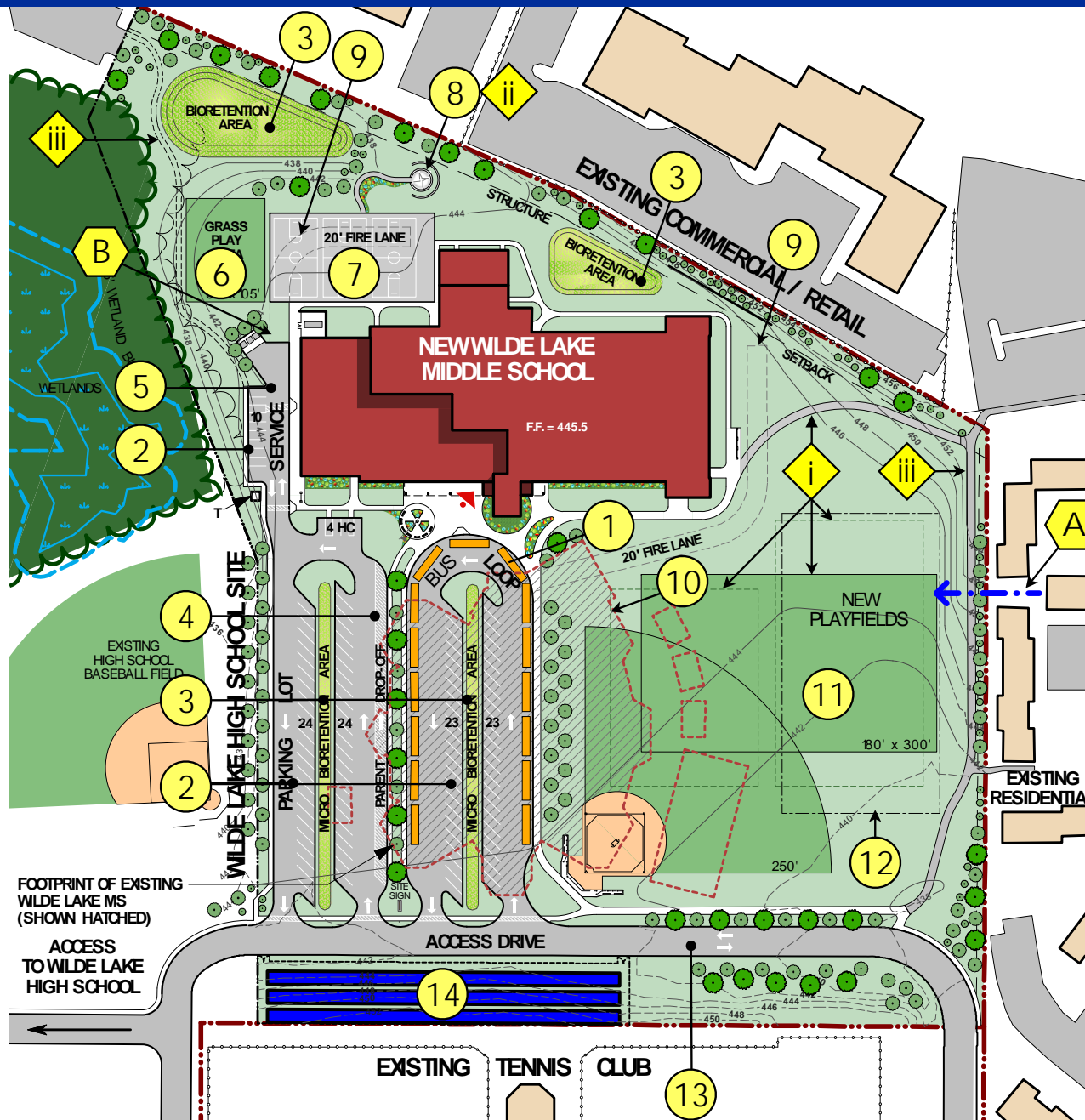
ACRES: 14.9 ACRES

PARKING TABULATIONS

CAR SPACES = 69
(INCLUDING 3 HC SPACES)

BUS SPACES = 15

Existing Site Plan



SITE NOTES

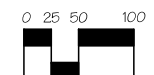
ZONING: NT (NEW TOWN)

ACRES: 14.9 ACRES

PARKING TABULATIONS

CAR SPACES = 108
(INCLUDING 5 HC SPACES)

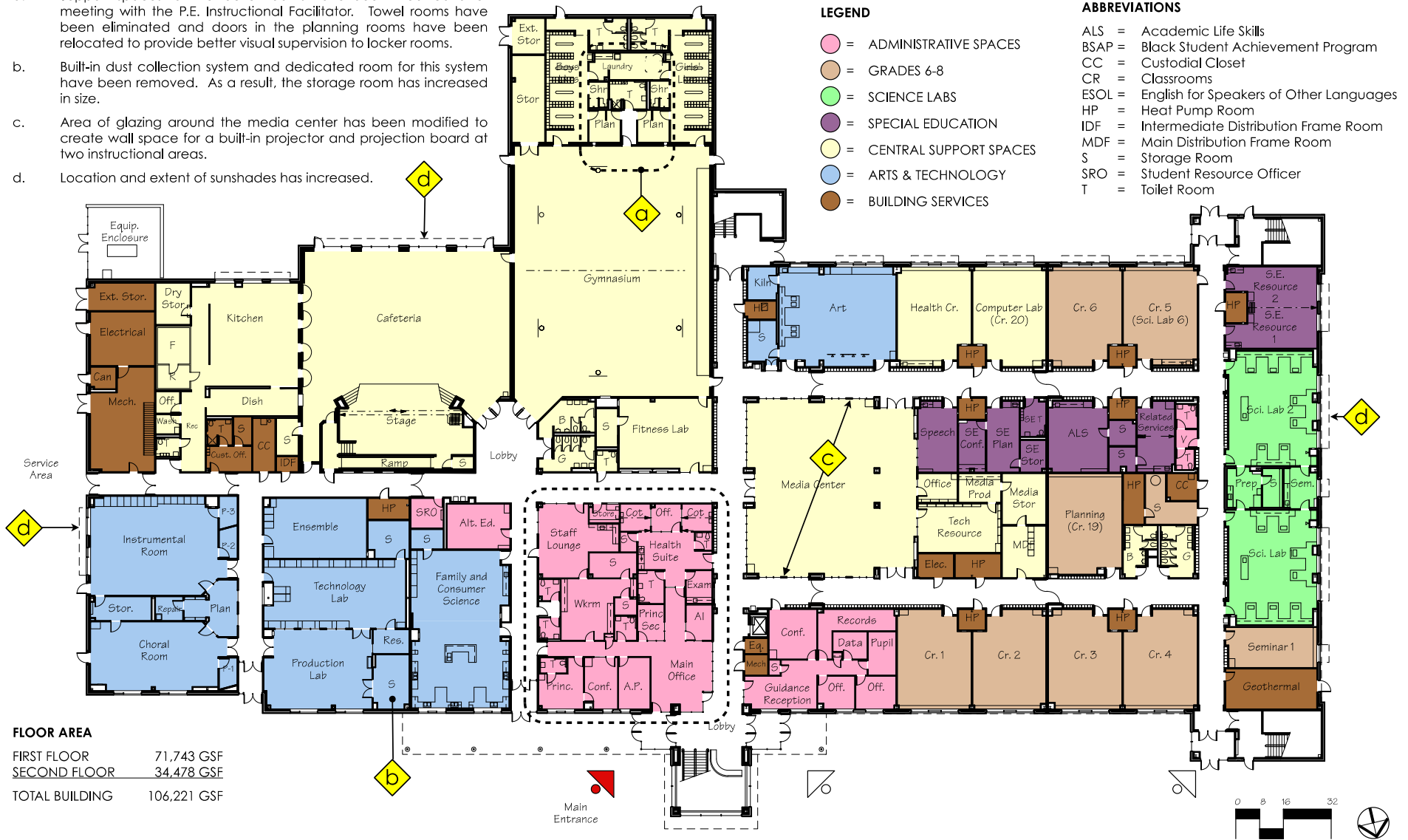
BUS SPACES = 15



Final Site Plan

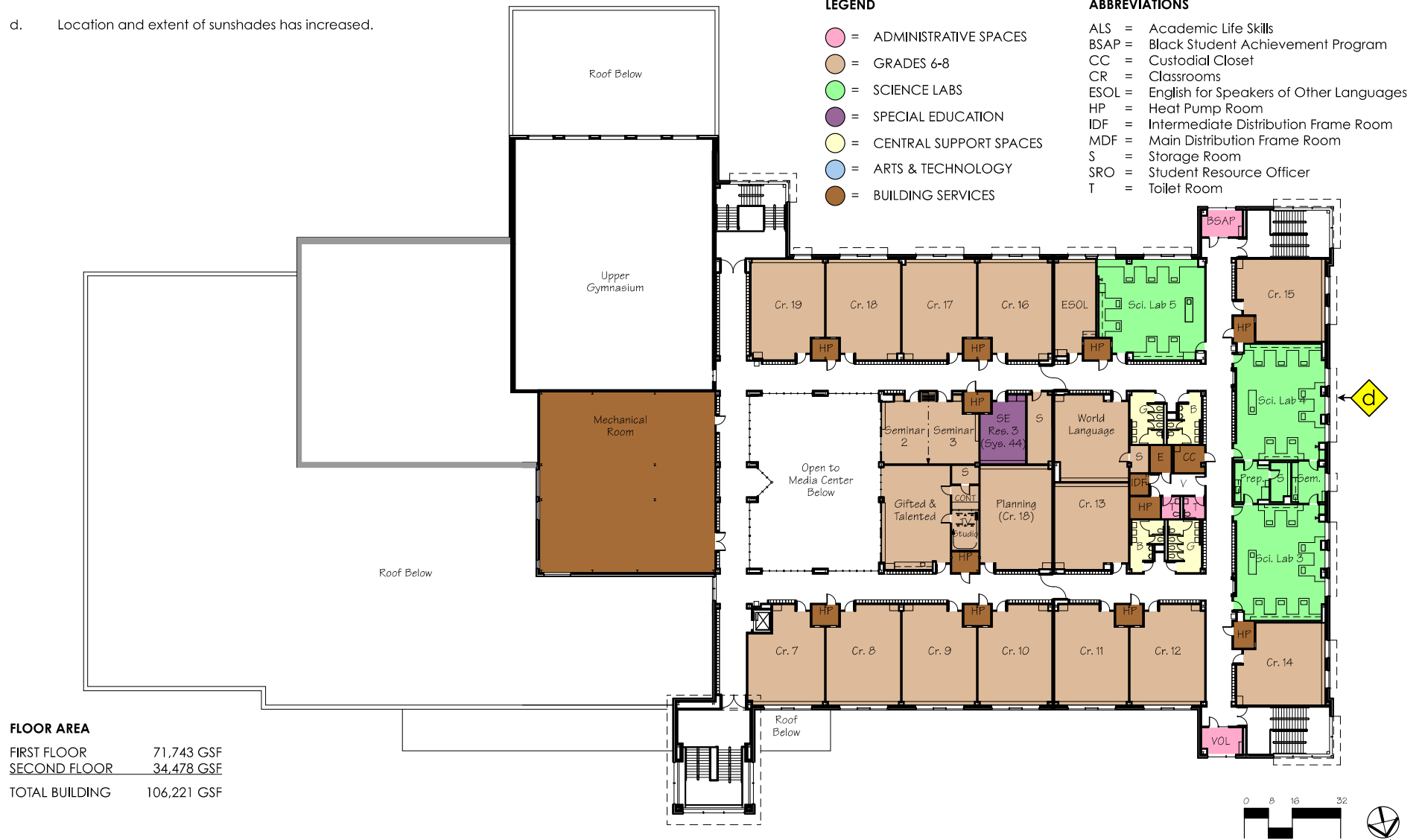
FIRST FLOOR PLAN NOTES:

- Support spaces for the locker rooms have been modified after meeting with the P.E. Instructional Facilitator. Towel rooms have been eliminated and doors in the planning rooms have been relocated to provide better visual supervision to locker rooms.
- Built-in dust collection system and dedicated room for this system have been removed. As a result, the storage room has increased in size.
- Area of glazing around the media center has been modified to create wall space for a built-in projector and projection board at two instructional areas.
- Location and extent of sunshades has increased.



First Floor Plan

d. Location and extent of sunshades has increased.



Second Floor Plan

Existing Wilde Lake Middle School Building	66 kBTU/sf
Base Building per ASHRAE 90.1-2007/ LEED Minimum	51 kBTU/sf
Middle School No.20 (Thomas Viaduct Middle School)	38 kBTU/sf
Net Zero Goal Wilde Lake Middle School Replacement Building	25 kBTU/sf

Energy Use Index Comparison



View of Outdoor Classroom

Aerial View

Total Project Budget

Base Construction Estimate *	\$33,307,851
<u>(includes 2% CD construction contingency \$666,157)</u>	
Architect/Engineering Fee	\$2,380,830
Construction Management Fee	\$2,100,000
Related Costs	\$1,582,808
Project Contingency	\$1,582,808
Equipment and Technology	<u>\$2,200,000</u>
Project Total Budget	\$43,154,297
 Funding Projections	
FY14	\$2,658,000
FY15	\$8,200,000
FY16	\$18,234,000
FY17	\$12,895,000
MEA Grant Contribution	<u>\$2,773,000</u>
Total Funding Projections	\$44,760,000

*Prevailing wage requirements have been included in the cost

Summary

- Schedule
 - Receive bids March 2015
 - Construction starts May 2015
 - Completion August 2017
- Request approval of construction documents and allow staff to proceed to bid