



Biology Ah Na Fa Nih Zeidah Acawn Lai?



Howard County

Pengnih-Khingthlaimi Cawnawk

2014-2015

Bomhding Ah Zeidah Na Tuah Khawh? Timi Telhchih

HRAWMMI BIAPITNAK A SINHTANHHNA

Zapi ca I a biapitnak ramkulh a sinhtanhna tlangtlaknak cu ramkulh thithruai zuannak a simi Ram Hruaituhna Bu Alaifang nih a tha bikmi tuah kel tuahnak (NGA Alaifang) le Ramkulh Sianginn Zungriantuantuhna Hruaitu a simi Khongsil (CCSSO) timihna ruahti hnu I tuahmi a si. Hi a sinhtanhna cu Saya te, Sianginn tawrel tu hna le a thiammi hna nih kan fa le hna an Sianghleiruun le an rian caah timtuahnak a simi a fiangmi le aa thleng bal lo mi a hrung hranghna kha I bomh in kauhter le thantermi a si.

Hi sinhtanhna nih hin Mucu kaihan in kaimi in tang hleihnih tiang Sianghngakchia hna I fimthiam an cawnnak I an hmuhtawnmi le an ngeih ding a simi theih hngalhnak le thiamnak sullam fiantermi a si I cu tik ah Siangsangruun in buaih an lak khawh lai, luhnak sinh a simi, credit a ngeimi Sianghleiruun I cawnmihna le riantuannak I tintan prokem hna ah an hlawh a tling lai. Hi sinhtan hna cu ramkulh ram leng le vulei cung ramkip hna I hmual ngei bikmi zohchunhaw tuahmi le asangbikmi nih theih hngalhnak termi an si. Hi nih hin Saya hna le Nu le pa hna kha aa lomi theihnak a simi Sianghngakchia hna nih zeidah cawn ding asi lai timi kha a hmuhter hna I cun dannak le tluknak khiahnak a simi zong kha Sianghngakchia vialte caah khawika ummi an si ah aa tlak ning in a pek hna.

Ahram: <http://www.corestandards.org/about-the-standards> timi ah hin zoh khawh a si.

MARYLAND SIANGHLEIRUUN LE PAW-COMNAK TINHCIA ASIMI ASINHHNA

Hrawmmi biapitnak sinhtanhna I lakmi zulh in, Maryland Fimthiam Cawnnak Bu hna nih a hram a kaumi, a sinh tharmi tha tein zoh cikceknak le aa ruang in tuahmi PK-12 cawn awk tuahmi ca kha hrawmmi ramkulh biapitnak ah tahchunh ding ah kum sau a nguhami riantuannak in hram thawk a si. A phi chuak ah, Maryland Fimthiam Cawnnak Bu Hrawmmi Biapitnak Cawnaw tuahmi Ca I a hrung hranghna kha kauhter a si. Hi hrunghranghna a simi Mirang holh asiloah Holh lei Fimthiamnak le Kanan hna nih a fiantermi cu Sianghngakchia hna nih Hrawmmi Biapitnak Ramkulh Sinh a simi fimthiam cawnnak he pehtlaihmi I tinhmi hmuh khawhnak ding ca i tuah khawhnak ding le hngalhnak khawhnak ding ca I a biapimi thiamnak le theih hngalhnak hna kha an si. Hi hrunghranghna hi Maryland I cawnaw tuahmi ca hrampi a si I cawn awk tuahmi ca a hramhna kha kauh ter nak dingah lam hmuhsak a si. Maryland Sianghleiruun le pawcomnak tinhcia asimi asinhna cu ramkulh sinh hrawmmi biapitnak hna cungah hrambunh asi.

Maryland I Asinhna:

- Thil tehte kha a hram si maw.
- Sianghleiruun le rian I tinhmi he an I tlang maw.
- Fiang, hngalhnak hawh le thlenglo in an si maw.
- Felfaimi chungtel le hngalhnak le sangmi thiamnak hna I cawnmi aa telmihna an si.
- Tulio ramkulh sinh I cawnaw ca hna le thil tikhawhnak hna cung in tuahmi an si.
- Ram dang sangsang tuahmihnanih theihhngalhnak termi an si maw, cu tikah Sianghngakchia zate nih vulei cung pumpi thanchonak le mibu he tahchunh in hlawh a tling maw.

Chungkhar Lamhruaitu le Maryland Siangsangruun Sianginn Khingthlainakhna



Maryland Siangsangruun Sianginn Khingthlainakhna

Siangsangruun Sianginn Khingthlaina cawnawkhna cu Algebra I, Mirangca 10, Biology, le American Cozahhna hi an si. Maryland siangsangruun sianginn diploma hmuh dingah hi cawndingmi I khingthlainak hi an awn ding a si. Hi khingthlainak nih siangsangruun an dih in an herhmi a hram asimi thiamnak an thiam cikcek in awn khawh nak ding kha a can ter. Mirang ca le algebra I khingthlainak nih sianghnakchiahna Maryland Sianghleirun le Pawcomnak ding ah Imanhnak Asinh hlawh tlinnak relnak a ngei. A Cozah le Biology hna ah hin Siangsangruun Khingthlainak zohkhenhnak a peh lai. Cawn dingmi chungtel pakhat cio hngalh dingmi langhter khawh nak dingah thiamnak le hngalhnak kha an biapi mi hna cu Howard County Public System (HCPSS) cawnaw I tuahmi ah thuk pi in aa bunh. Cawndingmi pali khingthlainak he aa tuaimi cu sianghngakchia thar luh lio le kum hniha cawngcang mi sianghngakchia hna luh can ah sining tein lak a si.

American Cozah khingthlainak cu kum 2011 ah ngolta a rak si, sinain kum 2012 thal chuahka ah khin Maryland upadi sertu nih nawl peknak in hmasa sining in siter tthan asi.

Cozah HSA cu Sianginn kai kum 2013-2014 a pinlei tiang I Tang 9 a lutmi Sianghngakchiahna caah ca cawnmi awnnak ah a herhmi thil a si.

Siangsangruun Sianginn Cawcawmi Awnnak Khingthlainak A Herhmi Thil

Cawnaw	Camipuai A Tuahu Sining	SY 2014-2015	SY 2015-2016
Algebra I	Thal le Khuasik Kar Kum Hram 2014 ah Avoikhatnak caah Algebra I Cawnding Caah Minkhumhnak Tuah	PARCC Algebra I Asiloah Algebra/HSA Konglam Zoh Cikceknak/Mod-HSA*	PARCC Algebra I
	Khuasik Hlandeu Vak 2014 ah Algebra I Dih		
Mirangca 10	Thal le Khuasik Kar Kum Hram 2014 ah Avoikhatnak Mirangca 10 Cawnding Caah Minkhumhnak Tuah	PARCC Mirangca 10 Asiloah Mirang 10 HAS/ Mod-HSA*	PARCC Mirang 10
	Khuasik Hlandeu Vak 2014 ah Mirangca 10 Dih		
Biology	Thal le Khuasik Kar Kum Hram 2014 ah Avoikhatnak Biology Cawnding Caah Minkhumhnak Tuah	Biology HSA/ Mod-HSA*	Biology HSA
	Khuasik Hlandeu Vak 2014 ah Biology Dih		
American Cozah	Thal le Khuasik Kar Kum Hram 2014 ah Avoikhatnak American Cozah Cawnding Caah Minkhumhnak Tuah	Cozah HSA/Mod-HSA*	Cozah HSA
	Khuasik Hlandeu Vak 2014 ah American Cozah Dih		

* Mod-HSA cu A Hleice Cawcangmi Sianghngakchia Hngalhnak Caah Asi.

Siangsangruun Sianginn Awnnak Khingthlainak Aherhmi Halmi Caah Awnnak Hmak

Algebra/Konglam Zokcikcekmi HSA	PARCC Algebra I	Mirangca HSA	PARCC Mirangca 10	Biology HSA	Acozah HSA
412	Thal le Khuasik Kar 2015 Biakhiah Dingmi	396	Thal le Khuasik Kar 2015 Biakhiah Dingmi	400	394

Khingthlainak Aphichuakhna

- Atanglei suaimi nih hin peng siangsangruun sianginn khingthlainak a herhmi lak hna ah asi khomi a phichuak list tuahmi an si.

Khingthlaina Cawnaw	+	Aherhmi Khingthlainak	=	Aphichuak
Awn		Awn		Maryland Siangsangruun Sianginn Diploma hmuhnak ding lam
Awn		SUNGH		Bawmhnak peknak le Camipuai Tuah-Tham
SUNGH		Awn		Cawnaw Lak-Tham
SUNGH		SUNGH		Cawnaw le Camipuai Tuah-Tham

Karlak Thlaknak le Online Cawnawkhna

Karlak Thlaknak le Khingthlainak Lakthanmi

- Howard County Policy 8030 nih a chimmi cu Sianghngakchia nih thazang dernak zon thonter deuh dingah hnatlak pimi bomhnak prokrem chung ah sianghngakchia nih an I tel ah cun, hmuhmi hmak kai ter deuh dingah camipuai an tuah than lai. Sianghngakchia siangsangruun sianginn I peng nih a herh a timi khingthlainak I a sungmi nih camipuai tuah than hlan ah aa tlakmi bomhnak a hmuh hrim ding a silai. Howard County zong nih peng nih herh a timi khingthlainak cawnawk cawn lio le cawn hlan ah karlak thlaknak a phunphun tuah piak asi lai. Chapchih in, Sianginn ningcang nih aa tlakmi bomhnak hmuh dingah Sianghngakchia hna caah thimkhawhmi adang dang tampi a ngeih. Atanglei suaimi hi karlak thlak hmuh khawhmi a tawinak in a tuahmi asi. Tamdeuh thongpang theih dingah na Sianginn ruahnak petu sinah chonkhawh asi.

Cawnawkmi Hlan	Cawnawkmi Chung	Cawnawkmi Hnu (Aatlakmi Bomhnak Pekmi)
Sianglirruun Sianginn Karlak Thlaknakhna	Kopchih in chimhmi Semina Cawnawk Tuahmihna	Thal Sianginn
Thal Sianginn I cawnawk tuahmi tinh chungnak	Buaktlak in fimthiam cawnnak kxanhna I kopchih in chimmi	Hngalh Hirhiar in Cawnawkmi
	Hleice bomhnak pek le thazang peknak caah cawnpiakmi	Sianginn hnu i karlak thlaknak prokrem hna le cawnpiaknak hna
	Sianginn hnu I karlak thlak prokrem hna le cawnpiaknak hna	Zarh te ni Pehtlaihna Hleidonhmi Cawnnak Sang Sianginn

Maryland Peng Khingthlainak Aherh Timi Caah AP Airawhlu Camipuai

- A harmi cawnawkrian tamdeuh dingah le a hmanlomi hnesaknak hlonh ding thazang pek dingah, MSDE nih aa tlakmi peng khingthlainak cung in hmuhmi hmak ai rolh ding in Khingthlainak I Cungkainak Hmunhmapeknak (AP) camipuai (a tanglei hi zoh) hngalhmi cung in hman hmuhmi 3, 4 le 5 kha a co hlan hna.

MD HSA	Tangangdeuh Hmunhna Peknak Camipuai (Cohlankhawhmi Hmakmuhmihna: 3, 4, 5)	Sianghngakchia Ca Herhmihna
Algebra/Akong Alam Zoh Cikcek	<ul style="list-style-type: none"> Kanan Calculus AB Kanan Calculus BC Tuak Thiamnak Cawnnak 	<ul style="list-style-type: none"> AP cawnawk le hneksaknak lak Cohlankhawhmi hmak hmuh Awannak Hmak peng nih a herh a timi khingthlainak caah co hlan khawhmi AP hmakmuhmi ai rolh.
Mirangca	<ul style="list-style-type: none"> Mirang Holh Mirangca Cawn 	
Biology	<ul style="list-style-type: none"> Biology 	
Cozah	<ul style="list-style-type: none"> U.S. Cozah Le Ramkhelnak 	

Hmankhawhmi Sernak I Cawnaklei Caah Pehtlaihna Hlei Tinhtuahnak

- Hamnkhawhmi Sernak I Cawnaklei Caah Karlak Pehtlaihna nih hin Maryland Siangsangruun Sianginn Diploma lei a hruihu hnesaknak I a herhmi hmuh dingah aa tlakmi Sianghngakchia hna caah a hlei in a tuahpiak. Buaih lak khawh dingah Sianghngakchia hna nih an thiamnak le fimnak kha, phunglam ning asimi camipuai prokrem asilo le awnnak asiloah hmak hmuhmi cawhmi, kum donghlei 2015 ah bia khiah, asiloah Karlak Pehtlaihna Hleidonhmi Tinhtuahnak Prokrem in tehte in langhter hrim ding asi. HCPSS Sianghngakchia I thim khawhmi caah hmuh ding kaa tlak ko tiah aa ruahmi hna cu Sianginn ruahnak petu he Hmankhawhmi Sernak I Cawnaklei Caah Karlak Pehtlaihna Tinhtuahnak kha a kaw! a hau.
- Hi Karlak Pehtlaihna hi Maryland Peng Fimthiam Cawnnak Bu nih theihngalh pimi asi I Maryland Phunglam i Phung Upadi (COMAR) chungah telhchih asi.

HSA He Pehtlaihin Hal Lengmangmi Biahalnak

Sianglairuun Sianginn Sianghngakchia hna nih Siangsangruun asinh I cawnawkmi peng nih a herh a timi khingthlainak an la ve maw?

Sianglairuun Sianginn Sianghngakchia Siangsangruun asinh cawnawk a la mi nih aa tlakmi a herh timi khingthlainak kha a lak hrim a hau. Sianglairuun Sianginn Sianghngakchia zate nih Sianglairuun I an lak mi peng khingthlainak pakhatkhat kha awn ding a hal. Sianglairuun I peng nih herh timi khingthlainak a la I a awngmi Sianghngakchia hna nih buah lak nak ding I fialmi ah an hmuhmi hmak hna kha an I ngeih khawh.

Mirang Holh Acawngmi nih Peng nih Herh Timi Khingthlainak Lakding Aherh Maw?

Adang peng bantu in Maryland nih, Sianghngakchia hna nih Sianginn an kai chung vialte Mirang holh nal tein chim khawhnan an ngeih I an than cho nak a tahap hna. Sianginn nih credit a ummi cawnawk biakhiahbak tuahpiak tik I a hlawh a tlingmi si awk ah Mirang Holh Cawnlio (ELL) min an khumhna. ELL Sianghngakchia hna nih aa tlakmi cawn awk an min khumh tik ah peng nih a herh timi khingthlainak an lak lai.

Howard County I an cawnpiaknak prokem nih Peng nih Aherh timi Khingthlainak caah ka fa kha zeitindah tinhtuahnak a pek?

Hneksakmi cawnawk vialte nih hin peng nih ngeihmi Abiapimi Muru Cawnnak Tinhmi asimi Howard County i a biapimi cawnawk tuahmi ca chung ah aa benhmi kha a ngeih hna. Howard County cawnawk tuahmi ca nih Biapitnak Cawnnak Tinhtuahnak biapitnak pin lei tiang nih a telhmi ah a va kauh chih; sihmansehlaw, peng nih a herh a timi khingthlainak caah a chung um mi thil vialte a herh di h I cu cu a biapimi cawn awk tuahmi ca chungah an um di h.

Hleice Fimcawnnak I Sianghngakchia hna caah zeibantuk rawl le inn khan dah hman asi?

Nitin cawn piaknak I umnak pekmi paoh le a khan chung khingthlainak cungah Sianghngakchia hna I a IEP I tialmi bantu te in, peng nih a herhmi a timi khingthlainak cung zongah tuah piak a si ve lai.

Midang Sianghngakchia hna nih rawl le inn khan hmuh ding an I tlak ve maw?

Maryland nih Sianghngakchia a herhmi caah hnesaknak tuah tuah ding nawl a pek. Hi inn khan le rawl hna hi Sianghngakchia I a IEP, 504 tinhmi, asiloah ELL tinhmi chungah konglam tialmi chung ah tial ding hrim a si.

Ka fa nih zeitikah peng nih a herh a timi khingthlainak a lak te lai?

Peng nih a herh a timi khingthlainak cu Sianghngakchia hna nih cawnawk muisan tungtlang tuah piak mi a dongh lei ah lak khawh a si lai.

Peng nih a herh a timi khingthlainak cungah zei hi dah awnnak hmuhmi hmak asi?

HSA Algebra/akong alam zoh cikceknek ca I awnnak hmuhmi hmank cu 412 asi, biology caah 400, le mirangca caah 396 asi. Cozah caah 394 hna an si. PARCC Algebra L and PARCC mirangca 10 awnnak hmak hna cu 2015 dong lei ah biakhiah a sit e lai.

Zeitindah hnesaknak a phi nu le hna nih hmuh asi lai?

Nu le pa hna nih fa le hmuhmi hmak a phi cu Howard County Zapi Sianginn Ningcang I hnesaknak tuahdih zarh hra nak hrong ah khin hmuh a sit e lai. A hlei thongthanhnak hal asi ah cun, nu le pa hna nih Sianginn asiloah Sianginn ningcang I rian ngeitu tuahmi hnu zultu sin ah chonh khawh asi.

Sianghngakchia nih khingthlainak an sungah ah cun, buah a can teah an hmuh khawhnan dingah Sianginn kai kum ah camipuai tuahthan khawh asi lai maw?

Sianghngakchia tamdeuh hna cu peng nih a herh a timi khingthlainak hi tang 9 asiloah tang 10 ah lak di h asi. Buah lak hlan ah, camipuai an sungah ah cun, a hleice in bomhnak le camipuai tuah thannak can tha an ngeih lai.

Zeitik ah dah pekmi nawl ngeihnak bomhnak pek hi a si te lai?

Sianghngakchia khingthlainak a sungmi hna cu aa tlakmi bomhnak ah an I tel hnu ah sianghngakchia hna nih khing thlainak lak than khawh a si lai.

Siangsangruun Sianginn Khingthlainak buaihlanak ding I a herhmi hmuh dingah zei hna dah karlak thlak thim khawhmi lam an si?

Howard County Zapi Sianginn Ningcang chung in, Sianghngakchia hna nih peng nih a herh a timi khingthlainak ah, a tang lei karlak thlak thim khawhmi an hmuhmi hna an si:

- Cungkainak Hmunhna Peknak (AP) camipuai ai rawlmi nih hin hi AP camipuai he pehtlaihmi a herh timi peng khingthlainak ai ah lakmi peng khingthlainak cung ah hnatak mi kha sianghngakchia hna nih hman a si lai
- I Thimkhawhmi Cawhmi in Hmuhmi Hmak nih hnesaknak nih Sianghngakchia hna kha a dang cung I a sang deuhmi tuahmi nih a niamdeuhmi tuahnak kha rulh nak nawl a pek.
- Cawnnak lei he pehtlaihmi hman khawh ding ser dingah pehtlaihnak hleidonhmi cu sianghngakchia bomh ko nabu in peng nih herh a timi khingthlainak pakhat asiloah tamdeuh a awng kho lo minih hmuh khawh ding in tuah a si lai. Sianghngakchia hna nih buaktlak in thenmi phunthum hmuh hrim a hau: voihnih tiang camipuai a tuah I a sungmi, aa tlakmi bomhnak pekmi ah aa telmi, le buaihlanak ding tiang lungtling in a thangchomi. Sianghngakchia I Cawnnaklei Theihhngalh Pinak Tuahding Tinhmi Funmi I telh dingah tuah ding tinhmi bia khiahnak ah Sianghngakchia I tel ding aa tlakmi nih Sianginn riantuan tu hna he an I tong lai.

Maryland Siangsangrunn Sianginn Buahlaknak ah Herhmihna

Credit Aherhmi: Sianghngakchiahna nih buah lak ding ah a tlombikah 21 credit tal hmuh a hau. Atang lei hna ahhin credit hmuhkhawh an si:

AMURU HERHMIHNA			ADANG HERHMIHNA	
Cawnmi Hmun	Tulio Mahbing Ca Credit Herhmihna	Pengnih Khingthlaimi Cawnmi	Cawnmi Hmun	Tulio Mahbing Ca Credit Herhmihna
Kanan [^]	Credits 3*, telchihin: <ul style="list-style-type: none"> Hrommi Biapitnak Algebra I chung in Credit 1 Hrommi Biapitnak Geometry Kanan chung in Credit 1 	Algebra I	Athami Thildawh Serthiamnak	Credit 1
			Lentecelhnak le Cawlcanghnak Cawnpiakmi	Credit 1/2, Nunchung Damnak telchihin:
Mirangca	Credit 4, telchihin: <ul style="list-style-type: none"> Hrommi Biapitnak Mirangca 9 chung in Credit 1 Hrommi Biapitnak Mirangca 10 chung in Credit 1 Hrommi Biapitnak Mirangca 11 chung in Credit 1 Hrommi Biapitnak Mirangca 12 chung in Credit 1 	Mirangca 10	Ngandamnak	Credit 1/2, Ngandamnaklei Fimcawnnak asiloah Atulio Ngandamnak Kong telchihin:
			Setlei Fimcawnnak	Credit 1
Teihpan	Credit 3, telchihin: <ul style="list-style-type: none"> Biology in Credit 1 Chapchihmi Credit 2 hnesaknak hmun I hmuhtonmi, zeipoah telchihin asiloah a tanglei zate hmunhma in: <ul style="list-style-type: none"> » Vulei Teihpan » Pongkam he pehtlaimi Teihpan » Nunak Teihpan » Anung lomi kong Teihpan 	Biology	Progrem Thimnak	Vulei Pumpi Holh in credit 2** ASILOAH American Kut Ke in I Biakchonhmi Holh in credit 2*** ASILOAH Hnatlakpimi Sangdeuhmi Setlei Progrem in credit 2 ASILOAH Fimthiamnak Cawnnak lei Pawcawnnak (Peng nih hnatlak pimi Pawcawnnak le Setlei Fimthiam Cawnnak Adihmi ca Progrem) in credit 4
Zatlang Nun Kong Cawnnakhna	Credit 3, telchihin: <ul style="list-style-type: none"> US Tuanbia in credit 1 Khuachung, Peng le Rampumpi Cozah in credit 1 Vulei Tuanbia in Credit 1 	American Cozah ****	Thimmi	Aherh timi pinlei cawnmi telhmi in Credit 1-3.

[^] 2014-2015 sianginn kum chungah, Tang 9 alutmi sianghngakchia he thawk in kanan 4 ah min I khumh ding in fial a si.

* Sianglairuun I Siangsangrunn level in kanan a dihmi Sianghngakchiahna nih kanan in credit 3 hmuh a hau thiamthiam, a sangdeuhmi level cawnmi ah duh deuh ngai asi. Maryland I Sianghleiruun Ningcang nih Sianghngakchia hna 2011 asiloah cu hnu ah Tang 9 a lutmi hna caah kumli chung peh thiahmahmi kawleih sianginn kanan a herhmi caah luhnak dun le dan a thlen. Luhnak a herh timi caah naa ruah chanmi kawleih asiloah sianghleiruun pakhat cio kha checkhna.

** Sianghngakchia hna Sianglairuun Sianginn I tuanmi cung zoh in French I asiloah Spanish I in credit a hmumi hna nih progrem I thim khawhmi caah Vulei Pumpi Holh in a tlombik ah credit 2 hmuh thiam thiam a hau.

*** Sianghngakchia hna nih ASL I le II kha herhmi hmuh khawh dingah dih hrim a hau. Hi cawn awk hna nih hin Sianghleiruun luhnak ca I a herhmi caah a tlinh khawh lo kho mi asi.

**** Kum 2013 le 2014 le cu pinlei I Tang 9 a lutmi sianghngakchiahna caah buahlaknak ca I herhmi ban tuk te in campuui hi rel piak a si lai.

Biology

Teihsan lei a simi ca rel le tial khawhnaq cu teihsan cu a taktak ti ah cun kan nunnak kap tampi ah a pehtlahmi asi bantuk in rammi vialte hna caah a biapi taktakmi a si. Pumpak thil kong cungah bia chahnak tuahnak in vulei cung polaci ceihhmainak chung ah fek tein zumhnak he pehtlahi ter nak ah, teihsan lei hngalhnak kan I fianmi le cu kan hngalhnak a ratnak cu a hrampi asi. Sianghngakchia cawnmi teihsan cung I dothlatnak nih pehzulh in biapi in a chiahmi cu Sianghngakchia hna nih teihsan ah lung tho ngai in kum tampi Sianginn kai chung I pehtlahi ter ding kha a si. Teihsan cawnmi nih a chungtel long kha asiloah teihsan riantuannak tuan cuahmah mi longah biapi in chiah si lo in hromton pehtlahi hna kha teihsan I abiapimi kap pa thum ah khan biapi ah chiah ding kha a si. K-12 Teihsan Fimcawnnaw I Tungtlang cu 2011 ah Rampumpi Fimcawnnak asimi Rampumpi Dothlatnak Kongci nih hi kapthum biapimi hna cu hi tin a sullam a fianter:

- Teihsan he pehtlahi mi le zung thiamnak tuah tawnmi. Teihsan lei a thiam mi hna nih tuah tonmi phun tampi her an I pehtlahi cu hna cu, bia halnak tuah, tinh, le hlathlainak tuah, le tehte asimi in bia alnak ah I pehtlahi hna kha an si. Hi teihsan thiammi le zung thiam tuah tonnak in teihsan lei thiammi chungah khan teihsan lei thiamnak kha sak a si. Abiapi in, hi teihsan lei tuah tonnak chungah I telnak in Sianghngakchia level kip asimi hna nih teihsan in chungtel asimi hngalh thiamnak kha thuk deuh in an sak.
- Aa kalhmi ruahnak. Teihsan fimthiamnak cu aa dangmi asiloah aa pehtlahi lomi thil asimi khomhmi kha a si lo. Aa ralchanhin, kokek vulei sining kan hngalhmi ruahnak a nganmi phunphun chung ah ningcang tein chiah khawh an si cu hna cu "thil a chuahtertu le hnorsuan tu" asiloah "namuna" hna ah khan ningcang in chiah khawh an si. Aa krahmi ruahnak pasarih nih K-12 Teihsan Fimcawnnak caah Tungtlang chungah fiannak a tuah, Sianghngakchia hna nih kokek vulei kong hngalhnak thanchonak dingah ruahnak chuahti tu tuanti bu a tuah piak hna.
- Dantatnak he pehtlahi biapitmi ruahnak hna. Teihsan ruahnak biapitmi nih teihsan lei dantatnak he pehtlahi chungtel kha a fianter. Nunnak, takpum asiloah vulei hmunhma teihsan asi zong silo zongah Sianghngakchia I teihsan chungtel biapitnak hngalhnak kha a can phak tikah cun thukdeuh in hngalh hrim ding asi. Sullam a ngeimi cawnnak hmuhtonmi an hngalhnak hman ah ah thazang petu simi ah I pehtlahi dingah an can tha cungah an hngalhnak level cu aa bunh.

Biapi ngaiin, teihsan kap thum a simi mi um lonak hmun ah chimh lo ding an si. Aiah, cawnpiaknak le khingthlainak ah hman te in komhchih ding hrim a si. Teihsan cu hngalhnak ruang pi, ruah khawhnaq lam, le kokek kan vulei hngalhnak sak nak lam a si. Teihsan rel khawh le tial khawh nak cu Sianghngakchia hna nih an vulei pi hi sullam ngei ah tuah khawh nak ding bomh nak in hlawh tlin mi a si.

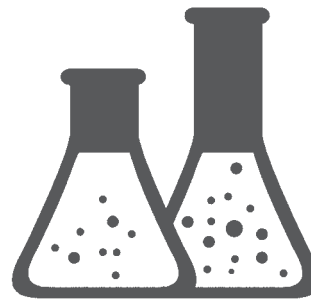
Biology ah, Sianghngakchia hna nih nun nak phunphun kal ning kha an cawn hna, cun an pongkam thil chung ah a nung mi thil phunphun hna nih zeitindah nunnak hmuh khawh nak ding ah an I zuam I nunnak an ngeih ti kha an cawn hna. Akong alam khomh nak dingah thilri hna le teihsan lei thil hneksak nak hmun I thilri hna kha hman thiam ding an cawn hna cun akong alam a sullam fianter dingah akong alam zoh cikceknak thiamnak a phunphun hna kha an hman hna. Sianghngakchia hna ca I a biapi deuhmi nunnak kong cawnnak ruahnak I timhmi nih pongkam thilri thlennak a um tik I pongkam thilri a chunglei thleng lo in chiah khawh peng nak, thazang thonnak thial le hman, rian tuan nak le saknak karlak pehtlahi hna, a tu le tu thlennak hna kha a telh hna. Chap chih in, Sianghngakchia hna nih nun nak kong cawnnak I hmuh tonmi nih ca cawnnak lei I pong kam thilri than cho nak a bomh. A bik in, Sianghngakchia hna nih pongkam thil kong cawn nak nih khuachung cawlcanghnaq nih huh phenhmi, kham, asiloah kokek pong kam thilri hna that ter deuhnak ah I pehtlahi khawh ding ah can tha kha a hun piak hna.

Cawnnak chungtel le thiamnak hna cu a kaumi man khiah tahnak tinhmi le tialmi lehmi, chuahteri cawnnak ah hmanmi, kawltanak asiloah catlap umnakhmun hna le a khan aiawhnaq he a simi camipuai telhchih mi in khingthlaimi a si.

Zungthiamnak Le Teihsan Tuah Lengmangmi

Siangsangruun in sianghngakchia hna nih, teihsan lei tuah lengmangmi teihsan lei sianghngakchia hna nih an thiamnak hna kha an thacho ter lai. Kumtin, sianghngakchia hna nih, teihsan lei thil hnesaknak hmun le cawnmi hlathlainak asi I can sau nguh ding mi tinhmi tuah dingmi telh in, hi thiamnak hi I lak khawh ding in can tha an ngei te lai. K – 12 Teihsan Cawnnak caah Atungtlang I chim ning ban tuk in, hi tuah lengmangmi hna nih hin, telchihmi hna:

- Zeitindah kokek thil le suaimi vulei rian le hneksaknak in hngalhmi thil tein hneksak khawh a si lai timi kong chimnak le fianternak ah a kal pi tu biahalnak le thianter le hal.
- Ruahnak le fianternak, fianternak ca I suaimi hmanthlak telchihin, hmanthlak suaimi, tak pum he aa lo in suaimi, kanan aiawhnaq, an I lawhnaq zoh tinak, le computer lawhternak hna aiawh dingmi caah bomtu thilri hna caah zohchunh ding ser le hman.
- Ningcang a ngeimi dothlatnak tling lak in tuah le tintuah.
- Akong lam tialmi chung I sullam ngeimi thil pakhat khat le namuna hngalhhawhnaq dingah, artlang in a simi thilri hmang in a sullam a hram in lak dingah, hlathlainak tuahmi I palhnak a hram thil hngalhhawh dingah le a phi chuak a hmantakmi tahnak tuah dingah, a konglam zoh cikcekm i kha ser.
- Kanan le kanan tuaknak hram pi thil simi kha artlang in a simi tuah awk asimi lawhternak ser: kanan cazin ningin akonglam zohcikceknak; hngalhmi, langhtermi, le a tam a tlom pehtlahi hna I hman mi caah hmang in takpum aa thleng kho mi pehtlahi hna kha aiawh hna.
- Vulei pi kongchim mi fianternak ca I hmanmi a petu ruahnak in fianternak kha ser.
- Thil a langmi hmuh khawh tongh khawh a simi kokek thil a siloah a harmi a simi a tha cemmi a sullam fianternak caah a tha cemmi fianternak hmuh khawh dingah, langhtertu a simi thil cung hram bunh in bia I al le hnu hngalhter.
- Fiangte le mi lem khawhnaq a ngeimi in I theihter.



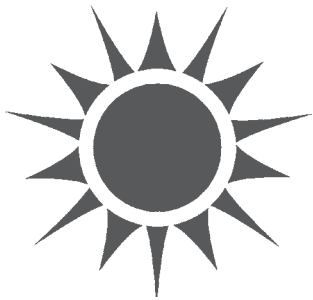
Nunnak i Chemistry

- A. Chemical chung cawhmi thil le macromolicu timi hmuhsimlomi thil hna a nungmi ningcang nih santlai in hmanmi sining hawi he aa lawhlonak kha bia in fianter.
- B. Cil chung ummi rawl rialtu I a riantuannak le sak ning kha ceikti.

Nunak Bawm Kalasi le Homeostasis

- A. Thil nung taksa tuah ning pakhat long a ummi le tampi a ummi chung l sak ning le riantuan ning hna kha ceihti.
- B. Zeitindah pehtlainnak le phunglam hna cu a nung mi thil kalasi tampi chungah tlin ter ning kha bia in fianter.

Pongkam thil sining a kaumi ah lehnak pek dingah zeitindah a nung ningcang an si ti l fian dingah homeostasis ruahnak kha l hman.



Nunnak Caah Thazang

- A. Ahringmi thingkung nih nitlang thazang hmang in carbon dioxide le ti hna rawl ah an thlen ningcang le nitlang thazang a hmang lomi riantuannak chung l thazang le thil biapi a simi hman nak le thialnak hna kha ceihti.
- B. Kalasi tampi a ummi thaw chuahnak chung i thazang le thil biapi a simi hman nak le thial nak kong ceihti.
- C. Kalasi tampi a ummi thil nung nih thazang le thil biapi a simi hmanna le thialnak chung l pung cung riantuantu thil pakhatkhat ningcang aa telnak kha bia in fianter.

Athormi Hang le Sadat Komhnak

- A. Anungmi ci a umnak, ci hna le DNA(tak pum cell chung l a ummi) lak l an l pehtlainnak kha fianter hna.
- B. Cell aa kualnak kong fianter.
- C. Zeitindah a nungmi ci he pehtlaihmi sining langhtetu hmel chunhnak cu molicu DNA chung l hmel chunhnak nih biakhiahnak a tuah ti kha fianter.

Anungmi ci hna he pehtlaihmi

- A. Hrinsof tefa chung l idannak chung l nu pa sualnak l hrinsornak tuah lio l a nungmi ci a umnak l phun simi le komh thannak nih a ngeihmi hnorsuannak kha tahchunhnak in fianter.
- B. Coconak namuna thimmi zohcikek le fianter.
- C. Anungmi thil chung l chuah kehnak thlennak tlom tam l a hnorsuannak kha bia in fianter.
- D. Bu chung l chuah kehnak kong he pehtlaihmi ruahnak cheuhbauhnak le sii sernak ah hmanmi nunnak ngei bacteria aa telnak kha bia in fianter.

Duhsah tein thil a hun kannak, l dannak Le Phun thennak

- A. Can khat hnu can khat in a nungmi thil hna nih an l thleng lengmang timi tehteh nih tahchunhnak a langhtermi kha fianter.
- B. Duhsah tein thil a hun kannak he pehtlaih in aa thlennak (tahchunhnakah: chuah kehnak kong aa dannak, pongkam thil thlennak, le kokek thimnak) asimi seh a cawl a cangning zohcikeknak tuah le fianter.
- C. Duhsah tein thil a hun kannak le pongkam l remnak ah saram le thing ram aa dangmi tampi an nunnak karlak an l pehtlainnak kha fianter.
- D. Thil nung asiloah phun lak l rual chan nak tahnak tauk.



Pawngkam Thanchonak Kong

- A. Thil nung lak an l pehtlainnak le thil nung le thil nung chungtel nih adang thil nung a hnorsuannak chuahtertu (thing kung ram kung le a nungmi saram he pongkam an l pehtlaih ning; pongkam thachonak l biapimi thil le thil nung bu, thil nung chungtel/thil nung chungtel nih a dang thilnung hnorsuan chuahtertu: hmun, vulei ti, thli, a kih le lum, rawl, seunak, thil nung; pehtlainnak: hawi dang sa a eimi saram-she, midang bochan in a nungmi saram le thing kung-ming asiloah thilri tampi, l hrommi, thil nung pahnih l pehtlainnak asi l pakhat bomh asi lio ah a dang kha hnorsuan lomi, thil nung a thimi cung bochan in a nungmi) hna l an l pehtlainnak zohcikeknak tuah.
- B. A nungmi ningcang le pongkam thing ke ram kung karlak thazang thonnak le biapimi thil a kalning bia in fianter.
- C. Thil nung phun dangdang lak l hrom ton pehtlainnak le pakhat le pakhat aa bochanmi hna kha zohcikeknak tuah le thingkung ramkung le anungmi saram he pawngkam an l pehtlaih ning fehter dingah zeitindah hi pehtlainnak nih hin a pek khawh ti kha fianter.
- D. Pongkam thil sining ah minung cawlcanghnak nih thil nung pumpak pakhat cio le a ummi minung dihlak ngeihmi thazang chung ah zeitindah kokek sining aa thleng ti kha hlathlai nak tuah.
- E. Anungmi thil vialte nih a biapimi vulei cung rawl pahnih cungah an l hngat chan cheuchum an si ti kha tahchunhnak in fianter.

Zohchunhawk Lakmi Hnesaknak Biahalnakhna

Zohchunhawk Lakmi Thimmi Lehnak

Dothlatnak tuahtu pakhat nih nai te ah nunnak a ngeimi thil nung phun a hmuh. Cu in cun DNA aa chang in a hun zulmi le adang phun tampi hna kha a hmuh hna. Aa chang in a hun ummi cu phun pakhat cio I ci nunnak a ngeimi thil nung aa lomi chung in a rami a si.

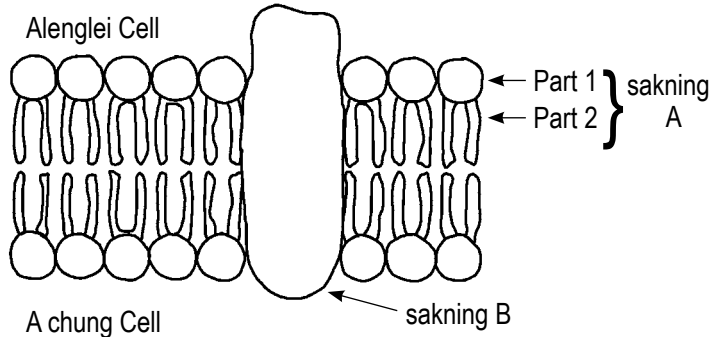
Hngalh lomi phun hnaence	Aa chang in a hun ummi DNA		
	ACT	GCA	GCC
Species I	ACA	GCG	CCG
Species II	ACT	GCT	GGC
Species III	ACA	GCC	GGG
Species IV	ACT	GCA	GCG

Akong alam a cunglei I tial ning ah cun, hngalh lomi thilnung hna cu zeibantuk phun ah dah neih cem in aa pehtlaih?

- A. Phun I
- B. Phun II
- C. Phun III
- D. Phun IV

Atanglei hi a phi pek dingah cell a nang muisam pekmi hi hmang:

Cell Membrane

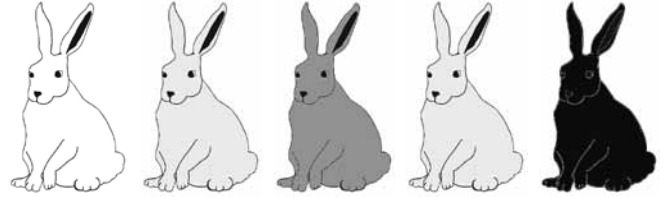


Molicu zeibantuk phun hi dah sakning A a si?

- A. protein chung ah aa telmi dat pakhat
- B. phospholipid timi tak chung I a ummi cell a nang a chuahtu
- C. carbon, hydrogen le oxygen aa cawhmi rawl
- D. a thormi hang

Saveh a ummi dihlak chung in pumpak pakhat cio nih a tanglei suaimi bantuk hin hmuh zong dangdang cio an ngei.

Saveh Hmul Zong Phawtnak

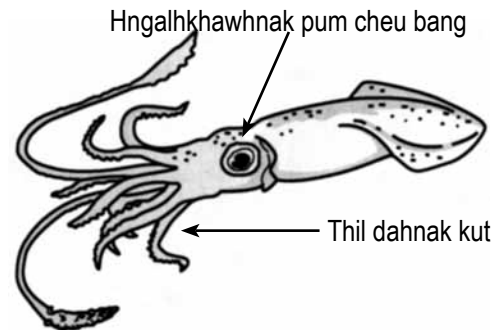


Saveh pumpak pakhat cio I hmul zong aa dannak cu bia in fian termi bantuk in a si:

- A. saram nunnak phun thar in a chuak mi in duhsah te in thil a hun kannak
- B. I dannak
- C. duh sah te in thil a hun kannak
- D. pakhat hnu pakhat I zul diahmahnak

Rili chung nga ban pahra a ngeimi phunkhat I Pumchung sining kong cawnnak

Hi nga hna cu rili he pehtlaihmi thil a si I thil kalnak he pehtlaihmi a tlingmi ningcang le nu le pa umti in fahrinnak an ngei. Atanglei suaimi hi rili nga ban pahra ngei cu a si.



Khoi ka zon hi dah nga I hngalh khawhnak pum cheu bang tinhmi a si lo?

- A. hawikom kawl
- B. hawidang sa eimi saram hrial
- C. thah ding saram umnak hmun kawl
- D. pum chung in thil hnom chuah

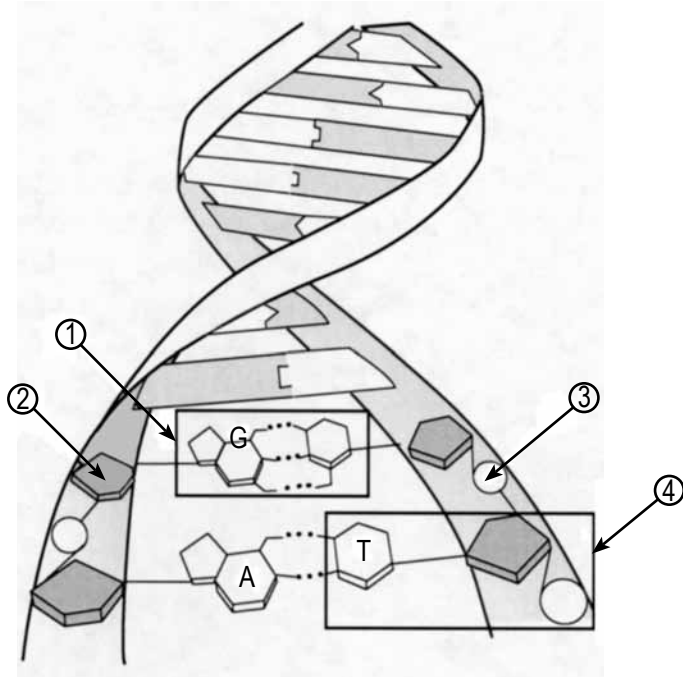
Zohchunhawk Lakmi Hnesaknak Biahalnakhna

DNA

Then ding ah aa lomi sining langhtertu hmel chunhnak a tlam tling lo mi caah ci kuah khat nih a nungmi ci a um nak an ngeih tik ah ci l thlen lengmang nak a cangmi phun khat cu nu ci le pa ci ton lio can ah a lang. Ci l thlen lengmangnak a chuah tik ah mah bing a pa l nu pa sinak ci kha zeih nih dah a aiawh?

- A. XXY
- B. XX
- C. XY
- D. XXX

A phi pek ding ah a tanglei l suaimi hi hmang.



Khawi ka hi dah a thormi hang a chuahtertu asi?

- A. 1
- B. 2
- C. 3
- D. 4

Sam a pawl mi caah nu pa pakhat cu homozygous uk tu asimi (BB) asi. Adang cu sam a pawl mi caah heterozygous (Bb) asi.

An ngeih dingmi fa nih a pawl mi sam ngeih ding a si khomi zeidah a si?

- A. 100%
- B. 75%
- C. 50%
- D. 25%

Nunnak a ngeimi thilnung

Langhtertu asimi thil nih ruahnak chuahmi cu hi nunnak ngei thilnung nih hin hrai l cini he pekmi nih suimilam 17 chung caah miti a tli kho.

Hi teihpan ruahnak a dik ti ding ah khoi ka l hi dah hman khawh ding a si?

- A. a tlangpi kawlmi langhter
- B. a harmi a simi hmuhsak
- C. hnesaknak tuah
- D. kharnak tial

Hi thilnung nih chiti ruah lo pi in rili chung l thlet suakmi khi hrawh ding zeihmanh a tuah kholo. Sihmansehlaw, teihpan thiammi nih chiti hrawh khawh dingah thilnung DNA chungah a nungmi ci umnak kha luh ter khawh a si. Hi set thiamnak cu tahchunhnak asimi

- A. tan
- B. DNA aa lo cikcek in tuah
- C. anungmi ci a umnak donghnak veve peh
- D. sullam lehnak tuah

Thakza

A cheu thakza hna cu ti an l leuh kho lo a sinain ti cung ah an kal kho. Zei sining nih dah hi thakza hi ti cung ah a kal ter khawh?

- A. pH
- B. hmai rengnaki
- C. a hang ah a can tertu thilhna
- D. etom he aa tlaimi temtu

Thingram Thannak Kalning

Bete a thanmi kong cawn dingah Sianghngakchia phu hna nih hnesaknak an tuah. Umm A le B chung a zat le hmet ngan aa khatmi bete kha an cin hna. Ninga chung kha nitin in, Umm A nih ti long a hmuh, l a dang B nih non a thatuk lomi kha a hmuh. Atanglei suaimi nih hin hnesaknak tuahmi hin umm chung l bete cinmi a san nitin caah a langhter.

Ni	Umm A: Ti Long	Umm B: Ti le non
1	2.0	2.0
2	2.2	2.3
3	2.3	2.8
4	2.5	3.2
5	2.6	3.8

Khoi ka l dah hnesaknak tuahmi ah tha tein zohmi a si?

- A. cinmi thingkung sannak cungah ti nih hnorsuannak
- B. cinmi thingkung sannak cungah non nih hnorsuanmi
- C. thingkung a sannaknik a thannak ding
- D. ni zeizat dah thingkung a than lai

Zohchunhawk Lakmi Setlei Ca Chung Dal Thimmi Lehnak He

Atanglei biahalnak leh dingah setlei lanhnak, *Nga Pemnak Bantuk Muisam Teihsan Fimnak ngeimi nih Hmuhmi kha hmang:*

Nga Pemnak Bantuk Muisam Teihsan Fimnak Angeimi nih Hmuhmi

Lo thlawhnak le set zung in sivai asimi sii ti le thli a thur tertu hna kha vulei cung dihlak ah hmuh a si, hi ti le thli a thur ter tu a hram a simi in a hlat nak hmuhma hmanh in hmuh a si. Tu tiang hi, teihsan lei thiammi hna nih hi thli le ti a thurtertua rat nak hram hi thli thiango lo an karh ter caah an mawh chiat hna. Sihmanhseh law, nai te in cawnmi nih a chimmi cu nga nih hin hi thli thiango lo mi hi lam hlat pi ah a phurh khawh.

Sweden ram l lam hla pi asimi hmun ti bual pa khat ah teihsan mifim pawl nih sivai hngalhar har ngai in an hmuh tik ah hi a tlangpi kawl nak hi an karh ter. Lund Sianghleiruun in teihsan mifim phu hna nih va si she law ti an ruah mi cu salmon timi nga phun pakhat nih Baltic timi rili ah an um lio ah hi sivai hi a thaumi an tisa chung ah khan an chap i an khon hna. Hi nga salmon hna cu ti a hnaa lei ah khan an pem l an ti an tit, cun tibual ah khan an thi l an pum a thut tik ah khan sivai kha an chuah hna.

Va siseh law ti ruahnak hneksak dingah, teihsan mifim hna cu a Laska lei ah khan khaal an tlong, cu ka ah cun hneksaknak kha tibual pahnih a simi Lower Fish Tibual le Round Tangle Tibual timi hna ah khan hneksaknak kha an tuah hna. Lower Fish Tibual cu salmon nga a pem nak ding ah hun piak a si l Round Tangle Tibual tu cu tisor khul rangmi tampi ruangah khan khar a si. Arctic grayling timi a hme mi nga cu, hi tibual pahnih ah hin a um. Nga a ti hna cu rawl ah rawl chung tel a lianmi pakhat a si. Teihsan mifim hna nih hi nga hme mi arctic grayling timi hi tibual pahnih in hneksaknak an tuah tik ah, arctic grayling nga hme pawl Lower Fish Tibual l a ummi hna cu Round Tangle tibual l a ummi arctic grayling nga nak in a let hnih in sivai an pum chungah hmuh a si. Tibual pahnih hna hi aa khatmi thli le ti thiango hmuhmi level aa khat veve an si cio na in, arctic grayling chung l sivai hmuhmi hi a dang dang ruangah a si kho tiah zumh a si.

Hi he aa lomi hneksaknak tuahmi ah, teihsan mifim hna nih salmon nga kha an pemnak in an tlah hna l an tit thaumi kha sivai um le um lo an hneksak hna. A thaumi tit chiahmi kha an hman lengmang hna na in, sivai level cu 400 a ritmi tluk kha cu rili fonghleisimi Copper rili in Lower Fish Tibual an khaal tlonnak vialte ah khan a tang rih ko. Pum chng hman awk ah thlen deuh lo in, salmon nga hna nih a dang an tit thau a ngeimi le an ti ah khan an l khon lehlan hna.

Hi cawnmi pahnih hna nih hin salmon nga a pem nak nih a thiango lomi sivai kha hmuh thar ah a phurh tiah ruahmi hi a bomh ngai.

Ca chung l dal ning in chim ah cun, Lund Sianghleiruun dothlatnak tuahtu hna nih zeid bantuk biahal nak hna hi dah an hal mi a si?

- A. Alaska le Sweden l salmon nga hna l an pemnak tuahtonmi kha zeid hna dah an si?
- B. Thli thiango karhmi level nih khan salmon nga a pemnak a hnorsuan maw?
- C. Alaska tibual pahnih l hmuhmi salmon le arctic grayling nga hna l an rawl kha zeidah a si?
- D. Rili in a thiango mi ti umnak tibual lei ah sivai phorhmi hi salmon nga pem l an tuavo rian a si maw?

Sianginn l cawnmi hlawhtlinnak caah na fa fimthiam cawnnak than ter dingah naa telnak a biapi tukmi asi. Hnesaknak cu na fa l a thanchonak kap KHAT te long aiawhmi a si. Sianginn l cawnmi poah ah na fa a tlamtlinnak hngalhar, tha pek, le hlorh nih na fa kha a bomh tuk hringanmi a si.

BUAKTLAK IN HNESAKMI-NU LE PA CAAH FIMCHINNAK LAKDINGMI

Na fa nih:

- Camipuai hlan zan ah na fa nih mitkuh vuai ding.
- Camipuai zingah zingrawl ei ding.
- Aa nuammi zing siding - chungkhar l siknak hrial ding.
- Acan tuahmi he inn ah tuah lengmang – inn ah tuahding ca tuah, l celh, rian hmetete tuan.
- Camipuai hlan deuh te l dinh khawh dingah Sianginn tuante phak.

HLAWHTLINNAK THAZANG PEK

- Na fa caah ruahchanhnak sangpi chiah.
- Na fian ding cu Sianginn cu na fa l a pakhatnak l thimmi hmun asi.
- Na fa ca a zoh nak dingah a daihnak hmuh tuahpiak.
- Na fa iin i tuahding a ca bomh.
- Na fa a Sianginn rian ah thathawhnak langhter.
- Na fa nih TV a zohmi rikhiah piak.
- Na fa kha zuamnak lei a simi cawnawak lak ding thazang pe.

HNESAKNAK LAK

Na fa kha thazang pe:

A thami in nung.

- Hmuhtonmi thil kha zuamnak ah ruah.
- Sawhpiaknak ralring tein rel.
- Halmi biakhiah dingah le abiapimi biafang zoh dingah biafang biahalnak kha tha tein zoh.
- Biahalnak poah leh l zuam lung dong lo in.
- Kir than law na tuah ding kha zoh than hna.
- A tlingmi catlang in tial le na ruahmi fianter lioad a tling te in tuah.

Biahal nak kip kha tling tein phi hna.

Thongthanhnak Tamdeuh Caah



www.hcpss.org

Hi hi Howard County Zapi Sianginn Ningcang caah web site I biapimi hmukhawhnak hmun asi. Khingthlainak thongthanhnak caah Camipuai Hmak Hmuhmi tiah aa tialmi zon te hi hmet.

www.marylandpublicschools.org/msde

This is the homepage for the Hi hi Fimcawnnak Maryland Peng Bu caah web site abiapimi umnak hmukhawhnak hmun asi. Nu le pa nih fa le bomhnak kong thongthanhnak hmukhawh dingah timi aa tialmi cung ah hmet.

www.mdk12.org

Ca chim tu hna le nu le pa hna nih peng camipuai kong fiandeuhnak ding bomhnak dingah Maryland website chung I tuahnak lei thongthanhnak le thilri telmi nih hin Sianginn Athanter. Hi ka hin HSA le Maryland Sianginn Khingthlainak kong thongthanhnak na hmuh khawh hna.

www.corestandards.org/

Zapi Hrommi Abiapimi Peng Asinh hmuh khawhmi nih asinh cung ah thongthanhnak kha a pek, holhle thiamnak I a baipimi aa thialmi kha a chim, cun a Hal Lengmangmi Biahlnak hna kha a phi kha I hmai hawih hna. Hi hmun ah hin catang copy kha downloah na tuah khawh.

www.parcconline.org/

Kawleih le Pawcomnak Tinhnak Ca I Khingthlainak caah Tuantinak (PARCC) hmun nih hin, sianghngachia tang 3 in 11 tiang pek ding mi khingthlainak thongthanhnak kha a pek. Hi ka hin cinhnak hnesaknak zong lak khawh asi, luh fawi I biapi asimi kong cawn, cun Biahlnak Lengmang mi Biahlnak a phi kha kawh.

<https://msde.blackboard.com/webapps/portal/frameset.jsp>

Hi hmun ah hin, Fimthiamnak lei Maryland Peng Bu nih say ate, sianghngachia hna le nu le pa hna caah bomtu thilri tampi kha a pek. Thongthanhnak asi mi Zapi Hrommi Biapimi Asinh le PARCC Maryland khingthlainak kong kha download khawh a si, vedio zoh khawh zong a si I lam hmuh saknak pekmi tinhtuahmi hna zohchunhmi suaimi asimi cawn awk I thimmi ca he I tuah tinhnak tuah.

www.mdreportcard.org

Hi hmun hi cu, Maryland Sianginn Tuahnak Theihtermi, peng camipuai chung I hmuhmi hmak telh chihmi, online lehmi a si.



10910 Clarksville Pike • Ellicott City, MD 21042
410-313-6600 • www.hcpss.org

Howard County Zapi Kainak Sianginn nih phun, rong, biaknak, miphun hramthawknak, taksapum/ruahnak lei tling lo mi, kum, nu le pa thleidannak, letthah cang mi sinak, nu/pa lei kap hoih in tanhnak riantuannak hnorsuan ter a si lo le l tuahding mi pakhatkhat ah luhnak lam siam piak ti ban tuk ah khan a thleidang lo. Title IX sokhlua kong biahalnak kongah, chimh dingah Title IX Coordinator, Equity Assurance Office of the Howard County Public School System ah chawnkhawh a si l a umnak cu 10910 Clarksville Pike, Ellicott City, MD 21042 ah asiloahPhone Nambur 410-313-6654 ah auhkhawh a si.

Hi "Na Fa Nih Zeidah Acawn Lai" timi Chungkhar Lamhrainakhna cu HCPSS website a simi
www.hcpss.org/academics/learnguides.shtml ah hmuhkhawh asi

SMT.10.14