

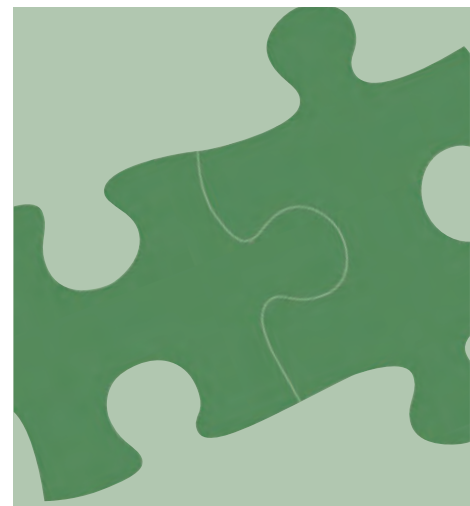


EDUCATIONAL
Partnerships



HOWARD COUNTY
PUBLIC SCHOOL SYSTEM

2010–2011
Annual Report



Share your Expertise and Help
SHAPE THE FUTURE!



Howard County businesses, organizations and professionals can help high school students get off to a great start in life. Students apply knowledge learned in the classroom to real-world work opportunities when they work with a professional in a chosen subject field.

Volunteer to mentor a student today!

Learn about Intern/Mentor Programs available at
www.hcpss.org/aboutus/partnership.

Choose "For Career Mentors, Job Coaches and Research Advisors."



THANK YOU



**Sheraton
Columbia**
TOWN CENTER
HOTEL



for sponsoring the
**Educational Partnerships
Celebration**



Superintendent's Message



As homeowners, employers, and community members, we know that school quality is essential to our economic prosperity and quality of life. We note with pride that, year after year, Howard County students and schools rank among the finest in the nation.

We can all take satisfaction in our students' achievements. We also share a stake in ensuring that our schools continue to excel. Each year, the stakes grow higher. Technology continues to evolve at an accelerating pace. Our economy becomes more global and competitive. A growing percentage of our students face poverty, homelessness, language barriers and other obstacles. At the same time, we must help our students master the knowledge and skills they will need for the world of tomorrow, even though that world is sure to look very different than it does today.

Despite these challenges, our students continue to meet, and very often exceed, the increasing demands of our changing world. Much credit is due to hundreds of educational partners who dedicate time, talent, and resources to support our students. These are businesses and non-profit organizations that represent many diverse fields, but are united in their commitment to Howard County public schools.

The Howard County Public School System is indebted to each of its educational partners, who join hands with teachers and staff in a common effort to prepare our students for responsible citizenry and productive careers. With your ongoing support, we will continue to ensure that our schools, and our community, rank among the best places to live, work, and learn.

Sincerely,

Sydney L. Cousin

THE BOARD OF EDUCATION OF HOWARD COUNTY 2010–2011



Janet N. Siddiqui, M.D.
Chairman



Sandra H. French
Vice Chairman



Frank J. Aquino
Member



Allen Dyer
Member



Ellen Flynn Giles
Member



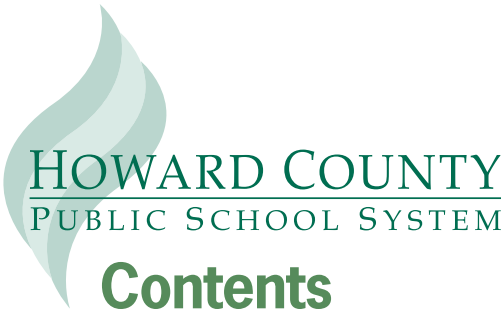
Brian J. Meshkin
Member



Cynthia L. Vaillancourt
Member



Alexis Adams
Student Member



Contents

Preparing Students to Thrive in the 21st Century	5
Educational Partners by School.....	14
At-Large Partners.....	18
Work Study – Transition Program Partners	20
Student Services Partners	21
Student, Family and Community Services Partners	21
Career Research and Development and Passport to the Future Partners.....	22
Gifted and Talented Program Partners.....	23
Employee Incentive Program Partners	24
Career and Technology Education Partners	24
Superintendent's Advisory Council for Business/Education Partnerships (SACBEP)	26

The Educational Partnerships Annual Report reflects partnerships active between July 1, 2010 and June 30, 2011.

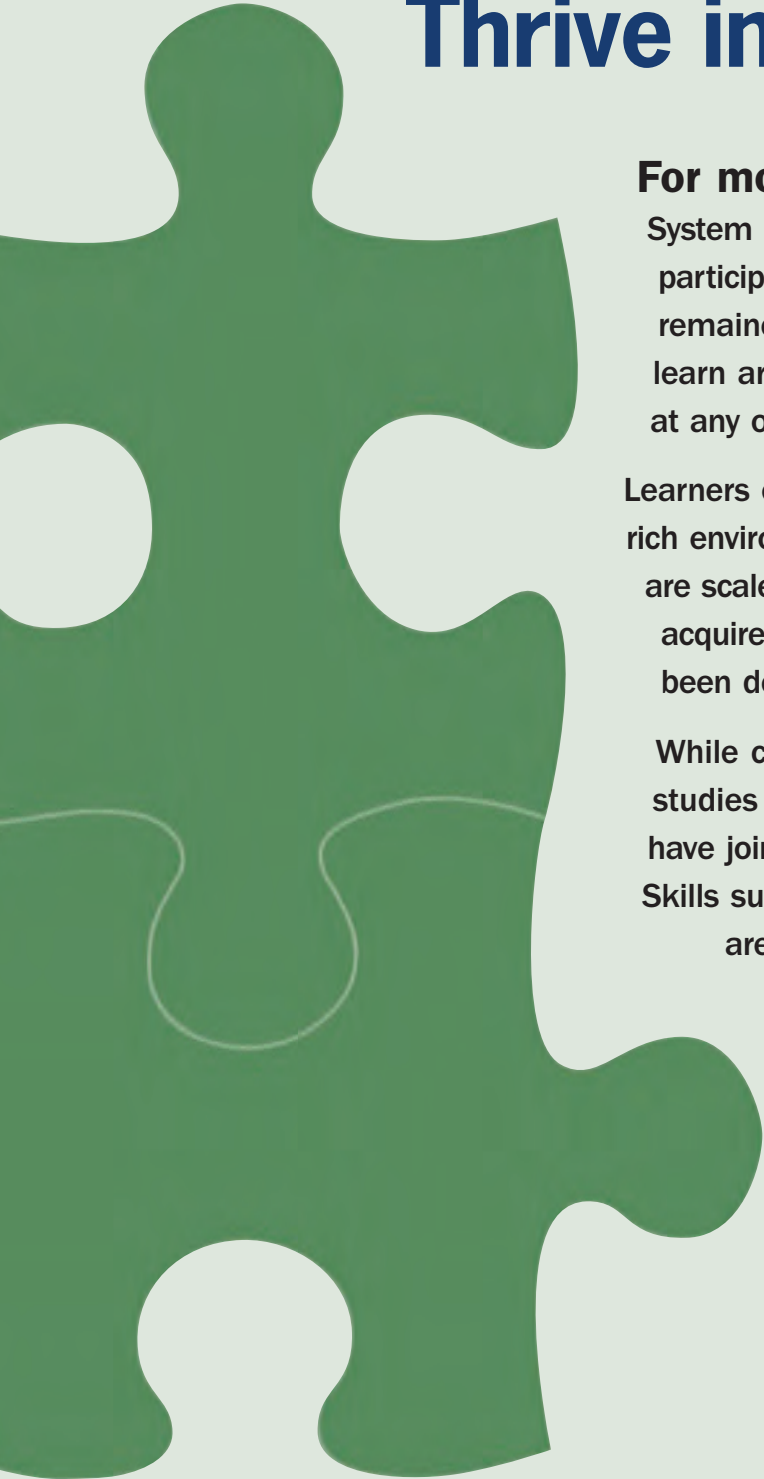
If there are any errors or omissions, please accept our apologies and inform the Partnerships Office at 410-313-6655 or partnerships@hcpss.org.



**DESIGN, PRODUCTION
AND ADVERTISING SALES**

410.332.6357
suncustomcontent.com

PREPARING STUDENTS TO Thrive in the 21st Century



For more than 160 years, the Howard County Public School System (HCPSS) has been committed to preparing students for responsible participation in a diverse and changing world. While that commitment has remained steadfast, the nature of the skills that today's students must learn are radically more diverse, and changing much more rapidly, than at any other time in history.

Learners of the 21st century are growing up in a technology-driven, media-rich environment, where barriers in science, technology and communications are scaled in rapid succession. To thrive in this environment, students must acquire diverse knowledge and skills in many fields that have only recently been developed, and plan to continue learning new skills for a lifetime.

While core subjects such as reading, mathematics, science and social studies remain central to the classroom curriculum, additional subjects have joined the roster of competencies that tomorrow's workers will need. Skills such as financial literacy, problem solving, creativity and teamwork are just a few of those that are now considered critical components of a complete education.

The HCPSS is fortunate to have the support of hundreds of community organizations that partner with educators to provide students with a broad range of essential skills and experiences. The following pages describe highlights of some of the innumerable partnership activities that take place at every Howard County public school.



The Body Image Therapy Center is a psychotherapy practice specializing in the treatment of eating disorders including anorexia, bulimia and binge eating, as well as body image and self-esteem. We are now accepting new clients for our outpatient program. Some insurances accepted, sliding scale fee available.

Visit us at
www.thebodyimagecenter.com

or call **443-602-6515**
for more information
or to schedule your
free 15-minute phone
consultation.

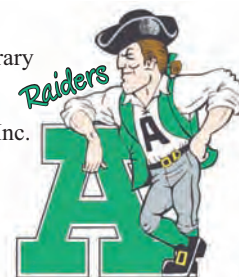
Atholton High School

salutes its

Partners in Education

Council of Elders of the
Black Community of Howard County
Head Start – Harriet Tubman
Hickory Ridge Village Association
Howard County Community College
Howard County General Hospital

Howard County Public Library
Lazarus Foundation
Schoolhouse Theater Arts, Inc.
Sunrise Assisted Living
V.W. Brown Insurance



Inspiring Excellence Together

Forest Ridge Elementary

EXTENDS A WARM THANK YOU TO
OUR BUSINESS PARTNERS



Brickman Group
North Laurel-Savage
Multiservice Center
NSA
Savage Library

Get a gold star from your mojo.

[And a lesson plan from your
nearby Medifast Center.]

It's easy with our clinically proven weight-loss intervention. Our program is designed to not only help you take the weight off, but teach you how to keep it off, *long-term*. Recommended by over 20,000 doctors since 1980, our program gives you the one-on-one nutritional and full-scale behavioral support tools you need for enduring health. It's **simple, safe, effective and sustainable**. So get to your nearest Medifast Center soon and show your mojo's who's at the head of the class.

Teachers – get 10% off your program fees when you enroll.*



CENTERS IN THE MARYLAND, DC AREA

Annapolis | Bel Air | Bethesda | Bowie | Columbia | Frederick (Coming Soon) | Gaithersburg
Glen Burnie | Pikesville | Rockville | Silver Spring | Timonium (Coming Soon)

CENTERS IN NORTHERN VIRGINIA

Alexandria | Arlington | Burke | Fairfax | Fredericksburg | Herndon
Leesburg | Manassas | Woodbridge

Schedule your FREE personal weight-loss profile today at
MedifastMojo.com or call 888-703-8746

*Limited Time Offer. Offer good with the purchase of a Medifast Weight Control Center program only. Public and private school K-12 teachers. Not valid with any other offer or promotion.





LEADERSHIP & TEAMWORK



Leadership U participants join in a teamwork exercise. Approximately 50 Howard County high school juniors take part in each annual Leadership U class, a four-month program sponsored by **Leadership Howard County (LHC)** to empower students to take a leadership role in solving community problems. The young leaders work on a range of service projects, from raising funds for senior transportation and an animal shelter to welcoming troops at the airport. Students may also take part in LHC's **Youth on Board** program, an opportunity to gain leadership skills as board members for local nonprofits.

Thirty members of Interact Clubs at Hammond, Marriotts Ridge, River Hill and Howard high schools join their **Rotary Club** sponsors in a road cleanup event. Rotary Clubs of Howard County provide extensive support to the HCPSS, including a dictionary for each third grader, Battle of the Books sponsorship, civility banners, and Interact student leadership clubs at several high schools.



Dr. Harrison Morson of the **Glenwood Lions Club** helps Leo Club members at Folly Quarter Middle assemble picnic tables for a new outdoor learning area. The service organization sponsors Leo Clubs to give students many opportunities for personal growth while serving their school and community. Leo Clubs at Bushy Park Elementary, Folly Quarter Middle, Glenwood Middle, and Glenelg High plan, promote and execute many service projects in each school. This year's projects included coat, food, eyeglass and school supply collection drives for local families in need; a yard sale to benefit the Make-A-Wish Foundation; thank-you letters for troops; and harvesting produce from school gardens for Grassroots.



Joseph Murray, community relations director for Ascend One Corporation, interviews a student during the spring 2011 Passport to the Future conference at **Howard Community College**. More than 150 students participated in the event, which included interviews, campus tours, a job fair, and workshops in financial literacy and entrepreneurship. High school students enrolled in the Career Research and Development program may earn a Passport to the Future after learning and successfully demonstrating the skills necessary for gainful employment, including effective communication, technology applications, and interpersonal relations. The Passport endorses students who seek employment in the region as “workforce ready.” Passport to the Future is offered in partnership with the **Howard County Chamber of Commerce**, which shares a commitment with the school system to developing a highly educated and successful workforce.



Burmese employees of Coastal Sunbelt Produce practice effective English language communication in everyday situations during lunchtime meetings with Bollman Bridge Elementary staff, Coastal employees, and community members. Many employees at the Coastal plant are recent Burmese immigrants with very limited English skills and whose children attend BBES. The meetings have been very effective in helping them foster their children’s success at school, adapt to work requirements at the plant and understand the community at large.

Lenore Gelfman, administrative judge for the **Howard County Circuit Court**, meets with Rockburn Elementary students after a Simulated Congressional Hearing. Fifth graders play the role of constitutional experts, demonstrating their knowledge of the U.S. Constitution and Bill of Rights by presenting prepared oral statements before a panel of judges. Many local government and business leaders serve as volunteer judges for the hearings, which are held each spring at most county elementary schools.



Representatives from the Horizon Clubs at Howard and Long Reach high schools join members of the **Elkridge Horizon Council** to make lunches for the county Cold Weather Shelter. As members of the **Horizon Foundation’s** Community Councils, students offer teen perspectives on a variety of issues important to the community and learn first-hand the power of civic involvement. The foundation sponsors Horizon Clubs at Centennial, Glenelg, Howard, Long Reach and Mt. Hebron high schools. Club members mentor younger students and take part in a variety of community service projects.



FINANCIAL LITERACY



Photo courtesy of Howard County Library

Children learn about money through games and other hands-on activities at the Money Matters Fair, held at the East Columbia Library to celebrate Financial Education Month. Information and resources to build financial literacy for all ages encompassed personal finance, financial aid for college, free credit reports, tax advice and much more. The event was cosponsored by **Howard County Council Chairman Calvin Ball, Howard Community College, MakingCHANGE, Friends of Howard County Library**, and the HCPSS.



More than 220 Howard County students took part in “Passport to Financial Literacy,” completing activities to simulate the real-world financial decisions that most people will make throughout life. The annual event is sponsored by non-profit partner **MakingCHANGE: A Financial Wellness Center** with support from the **Junior Achievement of Central Maryland, Inc.**



Members of the Academy of Finance Advisory Board

confer with academy students. Local business leaders and community representatives join HCPSS students and staff on advisory committees for each Career Academy cluster. Committee members review curriculum, discuss industry trends and technology that should be included in the curriculum, and offer suggestions and support for additional opportunities such as field trips, scholarships, competitions and internships.



West Friendship Elementary fourth graders

“Learn about Debt” with help from volunteer Christine Frank of **Ascend One Corporation**. The students discovered important financial literacy principles while role-playing credit purchases, interest payments, budgeting, comparison shopping and other money management activities.



ENVIRONMENTAL AWARENESS



Glenelg High juniors examine the aquatic diversity of the Chesapeake during a visit to the Philip Merrill Environmental Center, headquarters for the **Chesapeake Bay Foundation**. Students test water quality to gauge the health of Bay tributaries, and net oysters in a survey of the bivalves' essential role in ensuring the region's economic prosperity and environmental health.



Ecological science students

catalog macro invertebrates while gauging the health of the Davis Branch Stream at the **Howard County Conservancy**. The field trip was customized for English language learners, with key vocabulary terms translated into Chinese, Korean, Spanish and Urdu. Trained volunteers—including many retired HCPSS teachers—donate countless hours each year guiding student experiences on Conservancy grounds to reinforce the elementary and secondary environmental science curriculum. The private non-profit organization collaborates closely with science educators to promote environmental stewardship among Howard County students.



Students take an active role

in aquatic ecosystem preservation projects conducted by the **National Aquarium in Baltimore**. A recycling ecosystem on the grounds of Lime Kiln Middle replicates the Chesapeake Bay habitat with native fish and plants. Students nurture endangered grasses to plant on Bay shores.



HEALTH & WELLNESS

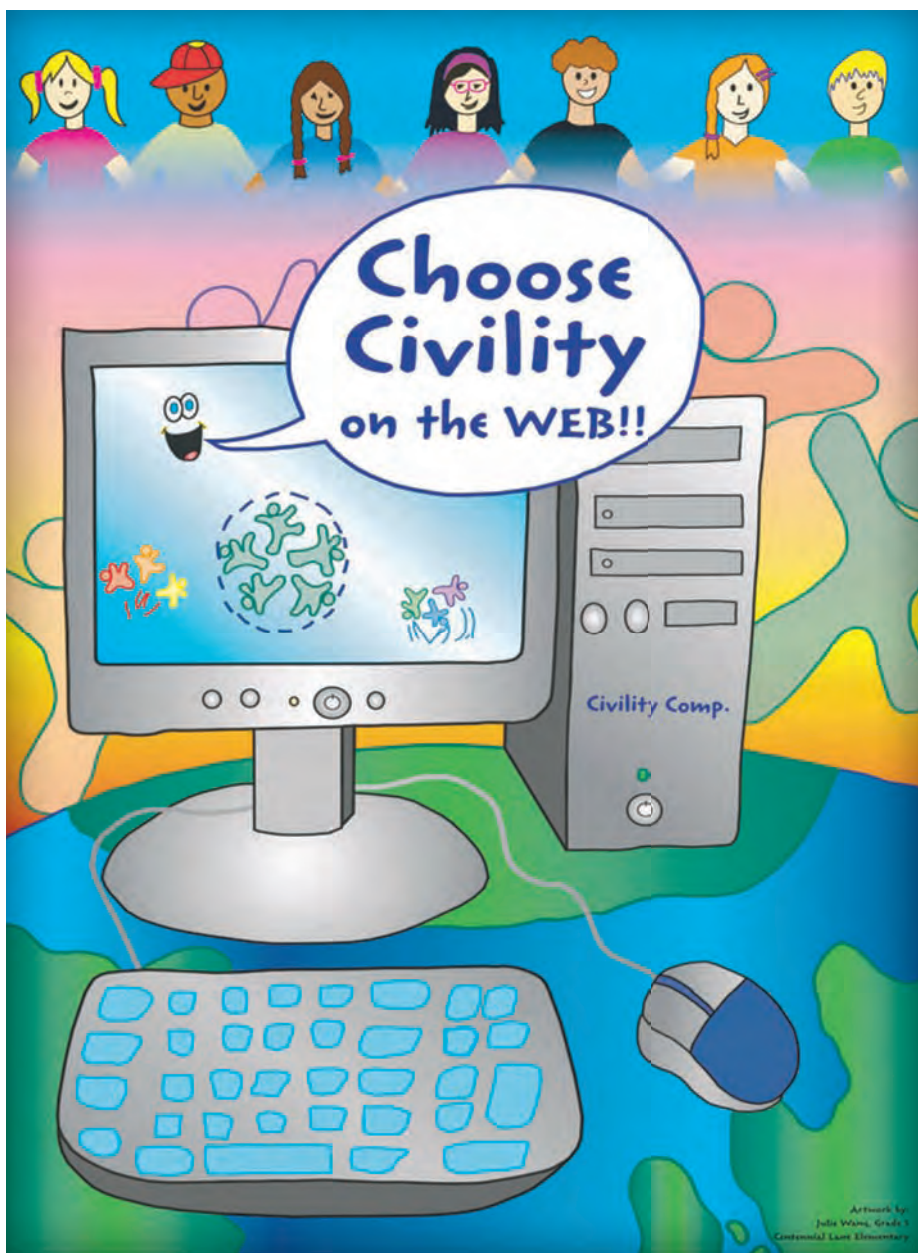


More than 100 Howard County boys and girls join Baltimore Orioles assistant athletic trainer Brian Ebel on the Camden Yards field for an HC DrugFree/Orioles event. O's catcher Matt Wieters explained the dangers and pitfalls of steroid and drug abuse to the students, who then rotated through exercises with team trainers. The nonprofit **HC DrugFree** partners with the HCPSS to sponsor workshops and other programs for students and parents throughout the year in a joint effort to keep youth drug, alcohol and tobacco free.

Centennial High students maneuver a golf cart through an obstacle course to test driving performance while text messaging, a distracted driving demonstration sponsored by the **Maryland Motor Vehicle Administration** with support from the **Howard County Police Department**. Though the young drivers could easily avoid dozens of cones while not using a cell phone, a second attempt through the course while sending a text message brought down many cones, even when driving more slowly. Additional school system partners supporting safe driving habits include **Courtesy on the Road** and **McAllister and Company Insurance**.



Students make salad during the Days of Taste®, a program offered by the **American Institute of Wine & Food (AIWF)** and sponsored this year at 12 county elementary schools by the **Horizon Foundation**. The series brings together chefs, farmers and community volunteers to help students appreciate the benefits and pleasures of fresh food. Over three days, students learn the elements of taste and nutrition, visit a farm to discover how food is grown and how it travels to the table, and balance fresh ingredients for a salad with a professional chef.



“Choose Civility on the Web!”

exhorts the Grand Prize-winning entry in the 2011 Choose Civility Poster Contest, designed by Julie Wang, a fifth grader at Centennial Lane Elementary. Large, full color reproductions of the poster now grace offices and schools throughout the county. Dozens of elementary and middle school students take part in the annual contest, sponsored with support from the **Lazarus Foundation** as part of the Students for Safe Schools initiative.

The HCPSS launched Students for Safe Schools in 2006 to encourage elementary and middle school students to act as leaders in providing a safe and respectful school environment where bullying behaviors are not tolerated. An Anti-Bullying Task Force, with representatives from government, non-profit and other community stakeholders, collaborates with HCPSS staff in empowering students and parents to reduce cyber bullying and other forms of harassment.

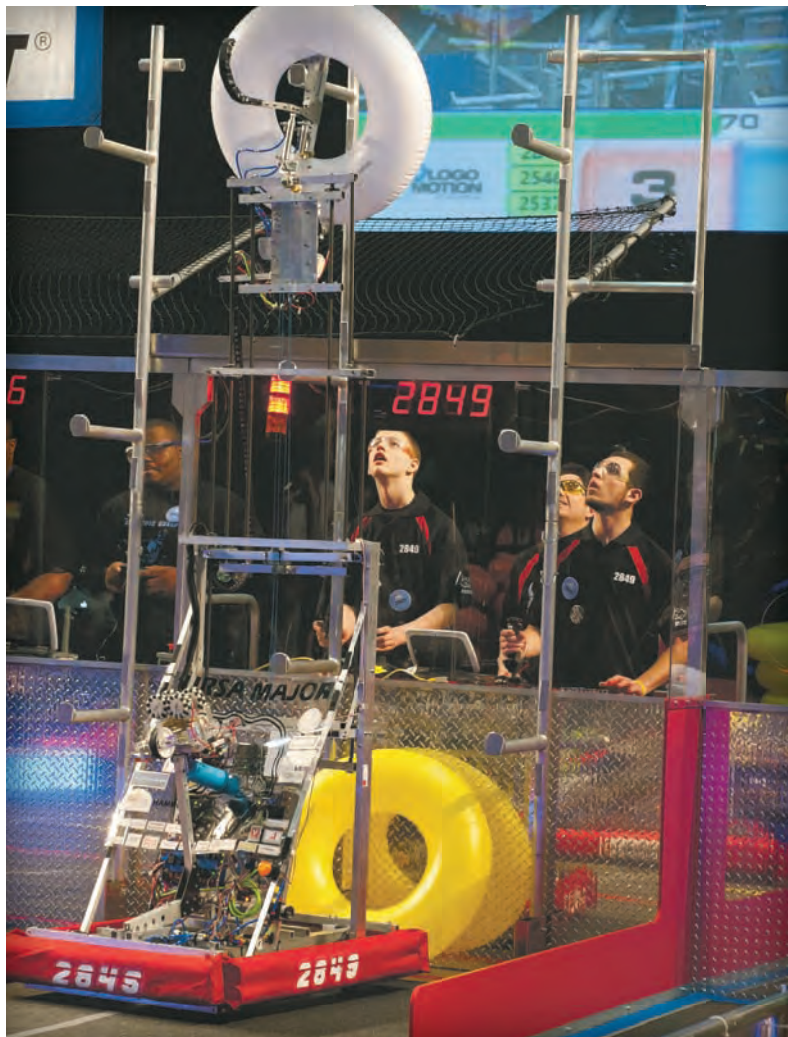


Photo courtesy of Ara Beal, Howard County Library

Children find their school on the list of Howard County “Healthy Schools” at the fourth annual Healthy Howard Day held at Centennial Park in June. The HCPSS proudly joins the **Howard County Health Department, Department of Citizen Services, PTA Council of Howard County, University of Maryland Extension, Tai Sophia Institute, Y of Central Maryland,** and other community partners in sponsoring the free event, which gives students and families an opportunity to enjoy a day of healthy outdoor physical activity, receive health education and participate in important health screenings.



PROBLEM SOLVING & CREATIVITY



Team Ursa Major, with members from Hammond and Wilde Lake high schools, maneuvers its robot during the FIRST Robotics Competition in Baltimore. Robotics clubs at Atholton, Glenelg, Hammond, Marriotts Ridge, Mt. Hebron and Wilde Lake high schools work with mentors and supporters from **W. R. Grace & Co.**, the **Howard County Economic Development Authority (HCEDA)**, **Honeywell Technology Solutions Inc. (HTSI)**, **Northrop Grumman** and many other local organizations to design, build and program robots for the competition.

Clarksville Middle students rehearse stage combat for a school production of *Romeo and Juliet* with help from actors from the **Chesapeake Shakespeare Company**. Each spring, eighth grade English classes research, develop and perform modern scene adaptations of a Shakespearean play. The project integrates learning in history, literature and other disciplines from throughout the school year. Partnerships with community acting troupes, which also include the **Olney Theatre Center**, **Howard Community College**, and **Howard County Summer Theatre**, add a rich dimension to arts education.



Wilde Lake Middle students prepare to debate offshore drilling in coastal waters at the Fall Countywide Debate, which drew competitors from every Howard County middle school. The HCPSS enjoys the support of experts from **Capitol Debate** in helping middle and high school students develop debate and public speaking skills.



The **Mechanical Machine Masters** from Hollifield Station Elementary accept the “Most Complex” award in the first annual Rube Goldberg Challenge, co-sponsored by **Howard County Library** and the HCPSS. Fourth and fifth grade contestants incorporated science, technology, engineering and math (STEM) to design an innovative machine to accomplish a simple task. The challenge is a new component of the A+ Partnership, which links the library, school system, and **Howard Community College** to provide educational enrichment for all ages.



Members of the **Long Reach High School Project Lead the Way™ (PLTW)** Engineering Team test its autonomous, amphibious search and rescue vehicle for the Howard County Engineering Fair, where the team took first place. In a cooperative arrangement with **UMBC**, Long Reach PLTW participants worked with a mentor from the **Naval Surface Warfare Center, Carderock Division** to brainstorm and design a solution to a realistic engineering problem to complete their senior capstone project.

Centennial High School

would like to extend a warm thank you to

- Allcare of Maryland
- Arc of Howard County
- Boy Scouts of America
Baltimore Area Council
- Capital Debate
- Eggspectation Bistro-Café
- Turf Valley Resort

for their commitment to
Educational Partnership



A special thank-you to the community and business members that provide over 50 mentorships to our students. The success of the program is due to your dedication to education.

Oakland Mills High School



Would Like To Recognize
and Thank...



Community Partners:

Alpha Phi Alpha Fraternity
CONEXIONES
Council of Elders of Howard County
LinquaLISTek
Matt Fein and
The Fein Properties Team
Oakland Mills Village Association
British American Autocare
Columbia (Maryland) Alumnae Chapter
of Delta Sigma Theta Sorority, Inc. (CAC)

Work Study Partners:

Airmania • Athelas • Burger King
Ellicott City Health and Rehabilitation
Howard County General Hospital
Cradlerock School • Guilford Elementary
Longfellow Elementary
HCPSS Board of Education Mailroom
Oakland Mills Middle School • HCPSS Print Shop
Talbot Springs Elementary School
Howard County Public Library – Main
Jilly's • Kinetics Dance Theater • Weis

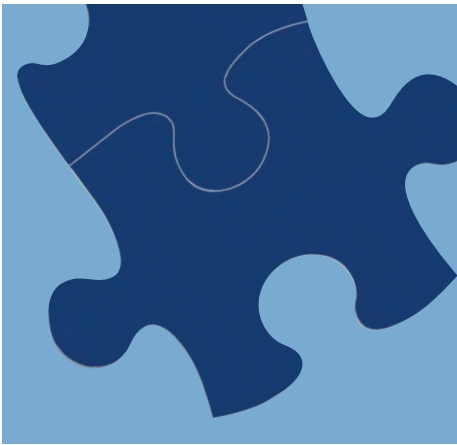
GT Program Partners:

Pikas Studios
DINFOS • Humanin
Pediatric Denistry
St. John's Baptist Church
FIRN • St. Agnes Hospital

School Based Partners:

LAPA – Latino Parents Assoc.
OMHS PTSA
OMHS Boosters
OMHS Band Boosters
OMHS Student Services Volunteers

Creating Capacity for Communities to Connect



School Partners

Educational partnerships are collaborative initiatives designed to achieve mutually agreed upon goals and objectives to strengthen and enhance the quality of education in Howard County. Businesses and organizations that worked one-to-one with a selected school during the 2010–2011 school year included:

ATHOLTON ELEMENTARY

A-OK Mentoring-Tutoring, Inc.
Awesome Tae Kwon Do
Chick-fil-A, Dobbin Road
Harris Teeter, Inc.

ATHOLTON HIGH

Council of Elders of the Black Community
of Howard County
Head Start, Tubman Center
Hickory Ridge Village Association
Howard Community College
Howard County General Hospital,
A Member of Johns Hopkins Medicine
Howard County Library, East
Columbia Branch
Lazarus Foundation
Schoolhouse Theater Arts, Inc.
Sunrise Assisted Living
V.W. Brown Insurance

BELLOWS SPRING ELEMENTARY

Eggspectation Bistro-Cafe
McDonald's, Snowden River Parkway
On Trak Transportation, LLC
Red Robin Restaurant

BOLLMAN BRIDGE ELEMENTARY

Coastal Sunbelt Produce
FIRN, Inc.
Girl Scouts of Central Maryland
Howard Community College
Howard County General Hospital,
A Member of Johns Hopkins Medicine
Howard County Library, Savage Branch
Loyola University Maryland
Mike's New York Deli
North Laurel-Savage Multiservice Center

BONNIE BRANCH MIDDLE

Eyre Bus, Tour & Travel
The Links, Incorporated, Columbia,
Maryland Chapter

BRYANT WOODS ELEMENTARY

A-OK Mentoring-Tutoring, Inc.
Dave & Busters, Inc.
FIRN, Inc.
Howard County Library, Central Branch
Phi Beta Sigma Fraternity

BURLEIGH MANOR MIDDLE

Eyre Bus, Tour & Travel
Tersiguel's French Country Restaurant
Turf Valley Resort

BUSHY PARK ELEMENTARY

Gallery 44
Glenwood Lions Club
Howard County Library, Glenwood Branch
McDonald's, Lisbon Center Drive
Pizza Hut, Lisbon Center Drive
Salazar Catering Services/Boardroom Café
Super Fresh, East Ridgeville Boulevard

CEDAR LANE

Chesapeake Rehab Equipment, Inc.
Community Action Council of Howard
County, Prepare for Success
Great Kids Village
Maple Lawn Business Association
Maple Lawn Homeowners Association
The Pearl Modern Spa and Boutique
Town Center Community Association

CENTENNIAL HIGH

AllCare of Maryland
Boy Scouts of America, Baltimore
Area Council
Capitol Debate
Eggspectation Bistro-Cafe
The Arc of Howard County
The Horizon Foundation
Turf Valley Resort

CENTENNIAL LANE ELEMENTARY

Chevy Chase Bank
Turf Valley Resort

CLARKSVILLE ELEMENTARY

Kendall Hardware
McDonald's, Daybreak Circle
Washington Suburban Sanitary
Commission (WSSC)

CLARKSVILLE MIDDLE

Howard County Library, Central Branch
M&T Bank, Clarksville Branch

CLEMENS CROSSING ELEMENTARY

Howard Bank
Howard County Library, Central Branch
Towson University

CRADLEROCK SCHOOL

Continental Societies, Inc., Columbia,
Maryland Chapter
Cradlerock Children's Center
East Columbia Preschool
Family and Children's Services of
Central Maryland
FIRN, Inc.
Good Life Wellness
Head Start of Howard County, Community
Action Council
Helping Hands Enrichment Leadership
Foundation
Howard Community College
Howard County Department of Recreation
and Parks
Howard County Department of Social
Services
Howard County General Hospital,
A Member of Johns Hopkins Medicine
Howard County Health Department
Howard County Library, East
Columbia Branch
Howard County Mental Health Authority
Howard County Office of Children's Services
Lowe's of Columbia, MD
Owen Brown Community Association
Ready At Five
Shattuck & Associates

Smoothie King, Columbia
Y Child Care at Owen Brown

DAYTON OAKS ELEMENTARY

National Security Agency
Sandy Spring Bank

DEEP RUN ELEMENTARY

Big Brothers Big Sisters of Central Maryland
Eggspectation Bistro-Cafe
ezStorage
Grace Community Church
Victory Martial Arts

DUNLOGGIN MIDDLE

Eggspectation Bistro-Cafe
Einstein Bros. Bagels
Outback Steakhouse, Long Gate
Uno Chicago Grill, Long Gate
Y of Central Maryland, Dancel Family Center

ELKRIDGE ELEMENTARY

Edible Arrangements, Laurel
Howard County Library, Elkridge Branch
Soccer Dome

ELKRIDGE LANDING MIDDLE

Dunkin' Donuts, Washington Boulevard
Elkridge Furnace Inn
Elkridge Volunteer Fire Department
Elkridge Youth Organization
Howard County Library, Elkridge Branch
Maryland Marvels
McDonald's, Washington Boulevard, Elkridge
Outback Steakhouse, Long Gate
Pizza Hut, Montgomery Road
Staples, Inc.
Subway, Washington Boulevard
T-Bonz Grille & Pub
University of Maryland, Baltimore
County Athletics

ELLICOTT MILLS MIDDLE

Ellicott City Fitness and Karate

FOLLY QUARTER MIDDLE

Barnes & Noble Booksellers
Chick-fil-A, Columbia Mall
Coho Grill
Eggspectation Bistro-Cafe
Eoyang Middle School, Korea
Eyre Bus, Tour & Travel
Glenwood Lions Club
Howard County General Hospital,
A Member of Johns Hopkins Medicine
Howard County Library, Glenwood Branch
Western Howard County Soccer, Inc.

FOREST RIDGE ELEMENTARY

Brickman Group
Howard County Library, Savage Branch
National Security Agency
North Laurel-Savage Multiservice Center

FULTON ELEMENTARY

Boarman's Market
Howard County Fire Station 11: Scaggsville
Maple Lawn Business Association
Sandy Spring Bank
The Pearl Modern Spa and Boutique

GLENELG HIGH

Capitol Debate
Columbia Center for Theatrical Arts/
Toby's Dinner Theatre
Council of Elders of the Black Community
of Howard County
E.W. Beck's
Eggspectation Bistro-Cafe
Eyre Bus, Tour & Travel
Glenwood Lions Club
Green Spring Health Services, Inc.
Howard County General Hospital,
A Member of Johns Hopkins Medicine
Identity Promotions, LLC
NASA Goddard Space Flight Center
The Horizon Foundation
Turf Valley Resort

GLENWOOD MIDDLE

Eggspectation Bistro-Cafe
Gailes' Violin Shop, Inc.
Glenwood Lions Club
Howard County Library, Glenwood Branch
Long and Foster Real Estate, Inc.
The First Tee of Howard County

GORMAN CROSSING ELEMENTARY

Gailes' Violin Shop, Inc.
National Security Agency
North Laurel-Savage Multiservice Center

GUILFORD ELEMENTARY

Big Brothers Big Sisters of Central Maryland
FIRN, Inc.
First Baptist Church of Guilford
Omega Psi Phi Fraternity, Tau Pi Chapter

HAMMOND ELEMENTARY

Border's Books & Music
Maryland Association for Environmental
and Outdoor Education, Green School
Program (MAEOE)
Trout Unlimited, Trout in the Classroom
Washington Suburban Sanitary Commission
(WSSC), Green School Program

HAMMOND HIGH

Arbitron
Council of Elders of the Black Community
of Howard County
Eggspectation Bistro-Cafe
Howard County General Hospital,
A Member of Johns Hopkins Medicine

HAMMOND MIDDLE

National Security Agency
PNC Bank, Maple Lawn Branch
Soccer Dome
The Columbia Bank

HARPER'S CHOICE MIDDLE

Bank of America, Harpers Farm Road
Columbia Association, Columbia
Athletic Club
Eggspectation Bistro-Cafe
Grace Community Church
Harper's Choice Village Center
Howard Community College
Howard County Department of Police,
Harper's Choice Village Center
Howard County Department of Recreation
and Parks
Howard County General Hospital,
A Member of Johns Hopkins Medicine
Howard County Library, Central Branch
Howard County Local Children's Board
Howard County Office on Aging, Florence
Bain Senior Center
Lazarus Foundation
McDonald's, Harpers Farm Road
Safeway, Harpers Farm Road

HOLLIFIELD STATION ELEMENTARY

Towson University

HOMWOOD CENTER

Boy Scouts of America, Baltimore
Area Council
KidzArt
PTA Council of Howard County
R:evolution Rhythm
Salazar Catering Services/Boardroom Café

HOWARD HIGH

All Financial Services
Alpha Phi Alpha Fraternity
Boy Scouts of America, Baltimore
Area Council
Capitol Debate

WAVERLY ELEMENTARY SCHOOL



*would like to extend our warmest thanks and
appreciation to our Business Partners*

Wilbide's Flowers, Jolles Insurance, Towson University

LONGFELLOW ELEMENTARY SCHOOL



The Students & Staff wish to recognize
and thank our Educational Partners

- ✓ **Towson University**
- ✓ **Sandy Spring National Bank
of Maryland at Clarksville**
- ✓ **A-OK Mentoring-Tutoring, Inc.**

Hammond High School

appreciates our partners in education!

Alpha Phi Alpha Fraternity, Inc.

Bright Minds Foundation

Conexiones

Eggspectations

Horizon Foundation

Howard County Library

Howard County General Hospital

Kings Contrivance Village Board & Merchants



BURLEIGH MANOR MIDDLE SCHOOL

*would like to extend a
sincere thank you to*

**Tersiguel's Restaurant
Turf Valley**

Eyre Bus, Tour & Travel

For Their Commitment to Educational Partnership



Council of Elders of the Black Community
of Howard County
Dance Foundations
Grassroots Crisis Intervention Center, Inc.
Howard County General Hospital,
A Member of Johns Hopkins Medicine
Mamma Lucia of Columbia
Gateway Overlook
The Horizon Foundation

ILCHESTER ELEMENTARY

T-Bonz Grille & Pub
Tip Top Limousine, LLC
Victory Martial Arts

JEFFERS HILL ELEMENTARY

Gailes’ Violin Shop, Inc.
New Vision Martial Arts
Schoolhouse Theater Arts, Inc.
Towson University

LAUREL WOODS ELEMENTARY

Continental Societies, Inc., Southeastern
Howard/Laurel Chapter
Dollar Plus
FIRN, Inc.
Grace Community Church
Howard Community College
Howard County General Hospital,
A Member of Johns Hopkins Medicine
Howard County Library, Savage Branch
Johns Hopkins University Applied Physics
Laboratory
McDonald’s, All Saints Road
North Laurel-Savage Multiservice Center
University of Maryland, Home and Garden
Information Center
Wilhide’s Unique Flowers & Gifts

LIME KILN MIDDLE

American Cichlid Association
Chesapeake Ecology Center
Earth Treks Climbing Center
Maple Lawn Business Association
National Aquarium in Baltimore
Wellness Evolution

LISBON ELEMENTARY

Eggspectation Bistro-Cafe
Howard County Library, Glenwood Branch
McDonald’s, Lisbon Center Drive
Pizza Hut, Corporate Office
Pizza Hut, Lisbon Center Drive
Sandy Spring Bank

LONG REACH HIGH

Alpha Phi Alpha Fraternity
Council of Elders of the Black Community
of Howard County
Honeywell Technology Solutions Inc. (HTSI)
Hunan Legend

Naval Surface Warfare Center,
Carderock Division
Rotary Club of Ellicott City Sunrise
Select Energy Solutions, Inc.
Smart Innovative Solutions (SIS), LLC
Society of American Military Engineers,
Baltimore Post
The Horace Mann Companies
The Horizon Foundation
University of Maryland, Baltimore County
Department of Mechanical Engineering

LONGFELLOW ELEMENTARY

A-OK Mentoring-Tutoring, Inc.
McDonald’s, Harpers Farm Road
Sandy Spring Bank
The Horace Mann Companies
Towson University

MANOR WOODS ELEMENTARY

The Pink Cabbage
Turf Valley Resort

MARRIOTTS RIDGE HIGH

Alpha Phi Alpha Fraternity
Council of Elders of the Black Community
of Howard County
Howard County General Hospital,
A Member of Johns Hopkins Medicine
Scientia Solutions, LLC
Select Energy Solutions, Inc.
Sofiac
West Friendship Volunteer Fire Department

MAYFIELD WOODS MIDDLE

Howard County Library, Elkridge Branch

MOUNT VIEW MIDDLE

Turf Valley Resort

MT. HEBRON HIGH

Capitol Debate
Eggspectation Bistro-Cafe
Howard Community College, Division
of Continuing Education and Workforce
Development
Howard County Conservancy
Howard County General Hospital,
A Member of Johns Hopkins Medicine
Howard County Summer Theatre
McDonald’s of Howard County
Salazar Catering Services/Boardroom Café
Sidney Kimmel Comprehensive Cancer
Center at Johns Hopkins
The Horizon Foundation
Wilhide’s Unique Flowers & Gifts
Y of Central Maryland, Dancel Family Center

MURRAY HILL MIDDLE
Continental Societies, Inc., Southeastern
Howard/Laurel Chapter
Five Below, Inc.

Howard County Library, Savage Branch
Limo, Limo
North Laurel-Savage Multiservice Center
Silver Diner

NORTHFIELD ELEMENTARY

Baltimore County Savings Bank
Chick-fil-A, Executive Park Drive
Howard County General Hospital,
A Member of Johns Hopkins Medicine
Subway, Baltimore National Pike

OAKLAND MILLS HIGH

Alpha Phi Alpha Fraternity
BITHGROUP Technologies
British American Auto Care, Inc.
Capitol Debate
Conexiones, Inc.
Council of Elders of the Black Community
of Howard County
Delta Sigma Theta Sorority, Inc., Columbia,
Maryland Alumnae Chapter
LG-TEK
Matt Fein & The Fein Properties Team
Supreme Cuts

OAKLAND MILLS MIDDLE

A-OK Mentoring-Tutoring, Inc.
Conexiones, Inc.
FIRN, Inc.
Howard County Library, East
Columbia Branch
Northrop Grumman Corporation
Oakland Mills Community Association

PATAPSCO MIDDLE

Barnes & Noble Booksellers
Destination Organized
Heartlands Senior Living Village
Howard County General Hospital,
A Member of Johns Hopkins Medicine

PATUXENT VALLEY MIDDLE

Continental Societies, Inc., Southeastern
Howard/Laurel Chapter
Grace Community Church
North Laurel-Savage Multiservice Center
Omega Psi Phi Fraternity, Tau Pi Chapter
Salazar Catering Services/Boardroom Café
The Floral Gallery

PHELPS LUCK ELEMENTARY

A-OK Mentoring-Tutoring, Inc.
FIRN, Inc.
Helping Hands Enrichment Leadership
Foundation
Howard County Department of Recreation
and Parks
Howard County Library, East
Columbia Branch

Our Shepherd Lutheran Church
Ready At Five
Sandy Spring Bank
Towson University

POINTERS RUN ELEMENTARY

Giant Food, Daybreak Circle

RESERVOIR HIGH

Alliance Benefits & Compensations, LLC
Alpha Phi Alpha Fraternity
APL Federal Credit Union
BB&T, Maple Lawn
Bra-La-La
Columbia Center for Theatrical Arts/
Toby’s Dinner Theatre
Conexiones, Inc.
Core Works Fitness Studio
Enjoy Flowers
Greenebaum & Rose Associates
Hyatt & Company
i.m.Wine
Looney’s Pub
Maple Lawn Business Association
North Laurel-Savage Multiservice Center
Offit Kurman, Attorneys at Law
Pangia Technologies, LLC
PNC Bank, Maple Lawn Branch
Raytheon Solipsys
ReMax Advantage Realty
Sidamo’s Coffee & Tea
Simply Divine Boutique
Synergy Physical Therapy
Tai Sophia Institute
Techlab Photo & Digital Imaging
The Pearl Modern Spa and Boutique
Zenyon, Inc.

RIVER HILL HIGH

Ascend One Corporation
Creig Northrop & The Northrop Team
GEICO
Howard County General Hospital,
A Member of Johns Hopkins Medicine
Howard County Library, Central Branch
Princeton Sports
River Hill Garden Center
Svec Conway Printing
The Cleaning Authority
Turf Valley Resort

ROCKBURN ELEMENTARY

Columbia Center for Theatrical Arts/
Toby’s Dinner Theatre
Howard County Department of Recreation
and Parks
Howard County Department of Recreation
and Parks, Rockburn Park
Howard County Library, Elkridge Branch
National Security Agency
PNC Bank, Elkridge Branch
Victory Martial Arts

RUNNING BROOK ELEMENTARY

A-OK Mentoring-Tutoring, Inc.
Howard County Department of Police
Howard County General Hospital,
A Member of Johns Hopkins Medicine
Howard County Library, Central Branch
Magellan Health Services, Inc.
Volunteer, Vivian Bailey

ST. JOHN'S LANE ELEMENTARY

Brunswick Zone – Normandy
Howard County Library, Miller Branch
Jump!Zone Columbia
Salazar Catering Services/Boardroom Café
The Columbia Bank
Vocelli Pizza

STEVENS FOREST ELEMENTARY

A-OK Mentoring-Tutoring, Inc.
All Financial Services
FIRN, Inc.
Good Life Wellness
Howard County Department of Recreation
and Parks

SWANSFIELD ELEMENTARY

Grace Community Church
Safeway, Harpers Farm Road

TALBOTT SPRINGS ELEMENTARY

Oakland Mills Community Association
Parents as Teachers

THUNDER HILL ELEMENTARY

Edible Arrangements, Catonsville
The Columbia Bank
Unique Creations

TRIADELPHIA RIDGE ELEMENTARY

American Fitness Express
Howard County Library, Glenwood Branch
Western Howard County Soccer, Inc.

VETERANS ELEMENTARY

Ellicott City Fitness and Karate
Howard County Library, Miller Branch
Howard County Republican Women
T-Bonz Grille & Pub

WATERLOO ELEMENTARY

Chick-fil-A, Dobbin Road
Eggspectation Bistro-Cafe
Howard Bank
Victory Martial Arts

WAVERLY ELEMENTARY

Towson University
We Promote Health
Wilhide's Unique Flowers & Gifts

WEST FRIENDSHIP ELEMENTARY

Howard County Library, Glenwood Branch
Turf Valley Resort

WILDE LAKE HIGH

A-OK Mentoring-Tutoring, Inc.
Alpha Phi Alpha Fraternity
Bagel Bin, Wilde Lake
Boy Scouts of America, Baltimore
Area Council
Capitol Debate
Daniels Photography Studio
Howard Community College
Howard County General Hospital,
A Member of Johns Hopkins Medicine
Howard County Library, Central Branch
McDonald's, Harpers Farm Road
Safeway, Harpers Farm Road
Sigma Gamma Rho Sorority, Inc.,
Eta Zeta Sigma Chapter
St. John Baptist Church
Vantage House

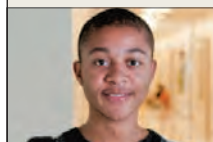
WILDE LAKE MIDDLE

Alpha Kappa Alpha Sorority, Inc.
Howard County Library, Central Branch
Lazarus Foundation
National Aquarium in Baltimore
Northrop Grumman Corporation

WORTHINGTON ELEMENTARY

Chick-fil-A, Executive Park Drive
Eggspectation Bistro-Cafe
Ellicott City Fitness and Karate
Glenelg Country School
Howard County General Hospital,
A Member of Johns Hopkins Medicine
Howard County Library, Miller Branch
J.M. Gaske, Inc.
The Columbia Bank

Where Do You Want to Go?



Scott
DESTINATION:
Computer Animation



Brandy
DESTINATION:
Physician's Assistant



Josh
DESTINATION:
Electrical Engineer

Whether you are fresh out of high school, or ready to refresh your job skills, Howard Community College has a pathway to help you get there.

HCC has all the things you're looking for in a college – and then some!

- More than 160 programs of study
- Transfer agreements with prestigious colleges
- Small class sizes
- Highly qualified, caring faculty
- Extensive student services – including financial aid, disability support, and career counseling
- International travel & study opportunities
- Intercollegiate athletics and fitness center
- Clubs, student government, student newspaper, and community service
- Professional theatre, TV studio, and cultural arts center
- Affordable cost

Check us out at www.howardcc.edu or call **443-518-1200**



GLENELG HIGH SCHOOL

Would Like To Extend A Warm Thank You To
Our Partners In Education

APL

Beck's Restaurant

Capitol Debate

**Council of Elders of the
Black Community of HC**

Dr. Paul Shoffeitt

Eggspectation Bistro Cafe

Eyre Bus, Tour & Travel

Glenwood Lions Club

Identity Promotions, LLC

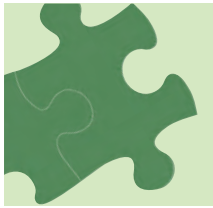
**NASA Goddard Space Flight
Center**

National Security Agency

Toby's Dinner Theatre

Turf Valley Resort

"Working Together as a Community to Achieve Excellence in All We Do"



At-Large Partners

At-Large partnerships are systemwide relationships that support the Howard County Public School System's curricular and strategic goals. Many at-large partners also have individual partnerships with schools of their choice. At-large partners for the 2010–2011 school year were:

A-OK Mentoring-Tutoring, Inc.
Adventure Park USA
African Art Museum of Maryland
Alpha Phi Alpha Fraternity
American Heart Association
American Institute of Wine and Food
Association of Community Services of
Howard County
Baltimore Sun Media Group
Baltimore/Washington Corridor Chamber
of Commerce
Bright Minds Foundation
Brunswick Columbia Lanes
Capitol Debate
Cattail Creek Country Club
Center for Civic Education
Chesapeake Bay Foundation
Chesapeake Bay Trust
Chesapeake Shakespeare Company
Children's National Medical Center
Chinese Language School of Columbia
College of Notre Dame
Columbia Association
Columbia Association, Columbia Archives
Community Action Council of Howard
County, MD, Inc.
Conexiones, Inc.
Council of Elders of the Black Community
of Howard County
Counselors Helping (South) Asians/
Indians, Inc. (CHAI)
Courtesy on the Road
Digi-Block, Inc.
Eggspectation Bistro-Cafe
Fairway Hills Golf Club
Feet First Sports
FIRN, Inc.
Frederick Keys
Girl Scouts of Central Maryland
Grace Community Church
Great Kids Village
Great State Publishing, LLC
Growth Adventures
HC DrugFree
Head Start of Howard County, Community
Action Council
Hobbit's Glen Golf Club
HoCoPoLitSo
Howard Community College
Howard Community College Children's
Learning Center
Howard Community College, Music
Department

Howard County Antique Farm
Machinery Club
Howard County Arts Council/Howard
County Center for the Arts
Howard County Board of Elections
Howard County Bureau of Environmental
Services, Recycling Division
Howard County Chamber of Commerce
Howard County Chinese School
Howard County Conservancy
Howard County Council
Howard County Department of Citizen
Services
Howard County Department of Fire
and Rescue
Howard County Department of Police
Howard County Department of Recreation
and Parks
Howard County Department of Recreation
and Parks, Office of Environmental
Education
Howard County Economic Development
Authority
Howard County General Hospital,
A Member of Johns Hopkins Medicine
Howard County Government
Howard County Health Department
Howard County Historical Society
Howard County Lacrosse Program
Howard County Legacy Leadership Institute
for the Environment
Howard County Library
Howard County Local Children's Board
Howard County Office of Children's Services
Howard County Office of Public Information
Howard County Office of the State's
Attorney
Howard County Office of Workforce
Development
Howard County Summer Theatre
Howard County Tourism, Inc.
Howard Soil Conservation District
Huaxing Language and Culture Center
Jewish Museum of Maryland
Johns Hopkins University
Johns Hopkins University Applied Physics
Laboratory
Johns Hopkins University School of
Engineering
Johns Hopkins University, Elementary and
Secondary Education Graduate Program
(FlexMAT)
Johns Hopkins University, Peabody Institute

Johns Hopkins University, Secondary
Education Graduate Program (SIMAT)
Judy Center at Cradlerock School
Kaplan University
Kaur Foundation
Korea – The Iksan District Office of
Education
Korea – The Iksan Regional Office of
Education, North Province of Jeolla
Lazarus Foundation
Leadership Howard County
League of Women Voters of Howard County
Lifetouch National School Studios,
Baltimore
Loyola University Maryland
Maryland Business Roundtable for
Education
Maryland Council on Economic Education
Maryland General Assembly
Maryland Historical Society
Maryland Humanities Council
Maryland Piano Service
Maryland Science Center
Maryland SportsCare & Rehab, LLC
McDaniel College
McDonald's of Howard County
McDonald's, Baltimore National Pike
McDonald's, Benson Drive
McDonald's, Columbia Mall
McDonald's, Daybreak Circle
McDonald's, Dobbin Road
McDonald's, Guilford Road
McDonald's, Montgomery Road
McDonald's, North Ridge Road
McDonald's, Pocomoke Avenue
McDonald's, Snowden River Parkway
McDonald's, Washington Boulevard, Jessup
Mediation & Conflict Resolution Center
(MCRC) at Howard Community College
Mid-Atlantic Turtle & Tortoise Society, Inc.
Morgan State University
Music & Arts Center
NAACP, Howard County Branch
National Archives and Records
Administration
National Security Agency
National University
Naval Surface Warfare Center, Carderock
Division
Nicodemus Communications Group
North Laurel-Savage Multiservice Center
Northrop Grumman Corporation
Olney Theatre Center

Patuxent Publishing Company
PTA Council of Howard County
Ready At Five
Road Runner Sports Retail, Inc.
Robinson Nature Center
Rotary Club of Clarksville
Rotary Club of Columbia
Rotary Club of Columbia Town Center
Rotary Club of Columbia-Patuxent
Rotary Club of Elkridge
Rotary Club of Ellicott City
Rotary Club of Ellicott City Sunrise
Rotary International, Howard County
Sheraton Columbia Town Center Hotel
Shimadzu Scientific Instruments
Smithsonian American Art Museum
Smithsonian National Portrait Gallery
Tai Sophia Institute
The Business Monthly
The Columbia Foundation
The Columbia Orchestra
The First Tee of Howard County
The Horace Mann Companies
The Horizon Foundation
The Timbers at Troy
The United States Army Field Band
The Young School, Kings Contrivance
Towson University
Turf Valley Resort
UMBC
UMBC Center for History Education
UMBC Martha Ross Center for Oral History
University of Maryland Orthopaedics
Associates
University of Maryland, College of
Education
University of Maryland, Extension,
Howard County
University of Maryland, Extension, Howard
County Master Gardeners
Volunteer Center Serving Howard County
W. R. Grace & Co.
Walden University
Washington Mystics
Waverly Woods Golf Club
Western Howard County Soccer, Inc.
Western Howard County Youth Baseball
Softball League
Whiteford, Taylor & Preston, LLP
Wilhelm Commercial Builders, Inc.
Willow Springs Golf Course

Bright Ideas from Sun Custom Content

DRIVE REVENUE WITH DESIGN, DIRECT MAIL, DATA
ANALYTICS, PRINT AND ONLINE MARKETING



Connect with us and see for yourself.

www.suncustomcontent.com

twitter.com/suncustom

facebook.com/suncustom

Wilde Lake High School

would like to extend a warm thank you to

ALPHA PHI ALPHA	HOWARD COUNTY
BAGEL BIN	GENERAL HOSPITAL
BOY SCOUTS OF AMERICA, BALTIMORE AREA COUNCIL	HOWARD COUNTY LIBRARY, EAST COLUMBIA
CAPITOL DEBATE	MCDONALD'S
COUNCIL OF ELDERS	SAFEWAY, HARPER'S CHOICE
DANIELS PHOTOGRAPHY STUDIO	SIGMA GAMMA RHO
HOWARD COMMUNITY COLLEGE	VANTAGE HOUSE

NEED HOMEWORK HELP?



Free, live, **ONE-ON-ONE TUTORING** offered to students in grades K - 12 in math, science, English, and social studies. Spanish speaking tutors also available.

Log on to HCLIBRARY.ORG to get started!
Available seven days a week from 2 pm to midnight.

AN A* PARTNERS IN EDUCATION™ RESOURCE FROM HOWARD COUNTY LIBRARY SYSTEM AND HCPSS



River Hill High School

appreciates our supportive
Partners in Education!

Thank you ...

- Ascend One Corporation
- Council of Elders of the Black Community of Howard County
- Creig Northrop and The Northrop Team
- Dunkin Donuts, River Hill & Harper's Choice
- GEICO, Matt Hauser & Assoc.
- Howard County General Hospital, A Member of Johns Hopkins Medicine
- Kendall's Hardware
- Ledo Pizza
- Linden – Linthicum United Methodist Church
- McDonald's, Daybreak Circle
- Rita's
- River Hill Garden Center
- River Hill Sports Grille
- Subway, Daybreak Circle & Highland
- The Cleaning Authority
- The Gathering Place

Guilford Elementary School

proudly recognizes our
partners in education!



First Baptist Church of Guilford
Omega Psi Phi

**Big Brothers Big Sisters
of Central Maryland**

Conexiones, Inc.



Work Study – Transition Program

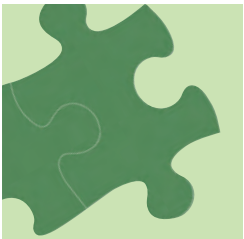
Work Study provides students with structured, hands-on work experience (paid or unpaid) in a community-based setting that is directly related to students’ needs as reflected in their Individualized Education Plans. The purpose is to provide an opportunity for special education students to engage in activities that transition to areas of employment. Partners for the 2010–2011 school year included:

7 Delta, Inc.
Abercrombie & Fitch
AIRmania Fun Zone
AMC Theatres
Animal Welfare Society
Arby's
Arthritis Care Specialists of Maryland
Athelas Institute Inc.
Athelas Institute Inc., Community Resource Center
ATR
Bagel Bin, Kings Contrivance
Bath & Body Works, Hanover
Bet Yeladim Preschool and Kindergarten
Border's Books & Music
Bra-La-La
Bridgeway Community Church
Bright Minds Foundation
Bright Stars Learning Academy
Brighton Gardens of Columbia
British American Auto Care, Inc.
Brookfield Christian School
Brunswick Columbia Lanes
Brunswick Zone – Normandy
Burger King, Minstrel Way
Camp Bow Wow
Celebree Learning Center
Central Maryland Rehabilitation Center
Charley's Grilled Subs
Chick-fil-A
Cinnabon
Clark's Elioak Farm
Coastal Sunbelt Produce
Coho Grill
Colosseum Gym
Columbia Academy at Maple Lawn
Columbia Association, Columbia Athletic Club
Columbia Association, Columbia Gym
Columbia Association, Supreme Sports Club
Columbia Center for Theatrical Arts/
Toby's Dinner Theatre
Columbia Day Care
Columbia Gymnastics
Columbia Montessori School
Core Works Fitness Studio
Cornerstone Church
Cosi
Coventry School For Dogs
Cradlerock Children's Center
Curves, Howard County
Daedalus Books Warehouse Outlet
Dakis Service Center

David's Natural Market
Days End Farm Horse Rescue
Doggie Day Care
Dolly's Car Wash
Double T Diner
E-Structors, Inc.
Ed-U-Care Learning Center
Eggspectation Bistro-Cafe
Ellicott City Health & Rehabilitation Center
Ellicott City Senior Center
Ellicott City Volunteer Fire Department
Enjoy Flowers
Exxon, Steven's Forest
Fairway Hills Golf Club
Feet First Sports
Finish Line, Inc.
First Presbyterian Church
Food Lion, Robert Oliver Place
Footaction
Giant Food, Daybreak Circle
Giant Food, Dorsey Hall Drive
Giant Food, Fairlawn Street
Glenwood Senior Center
Goddard School
Grandfather's Nursery
Great Harvest Bread Co.
Happy Dog Care, Inc.
Harvest Manor Assisted Living
Head Start, Dasher Green Center
Head Start, Ellicott City
Head Start, Tubman Center
Heartlands Senior Living Village
Hilltop Child Care Center
Hobbit's Glen Golf Club
Home Depot, Baltimore National Pike
Howard County Department of Recreation and Parks
Howard County Fire Department, Rivers Park
Howard County Food Bank
Howard County General Hospital, A Member of Johns Hopkins Medicine
Howard County Government
Howard County Health Department
Howard County Historical Society
Howard County Library, Central Branch
Howard County Library, East Columbia Branch
Howard County Library, Glenwood Branch
Howard County Library, Miller Branch
Howard County Library, Savage Branch
Howard County Office on Aging, Florence Bain Senior Center
Howard County Tourism, Inc.

Hyatt & Company
Indoor Furniture
Integrity Martial Arts
JC Penney
Jiffy Lube, Baltimore National Pike
Jiffy Lube, Clarksville Square Drive
Jilly's Bar & Grill
Jo-Ann Fabric and Craft
Johns Hopkins University Applied Physics Laboratory
Johns Hopkins University, Financial Aid Office
Joseph's Refinishing, Reupholstering & Touch-up
Kahler Hall
Kendall Hardware
Ken's Krew, Inc.
KFC, Long Gate
KinderCare Learning Center
Kinetics Dance Theater
La Petite Academy, Eden Brook Drive
La Petite Academy, Frederick Road
La Prima Donna Beauty Salon
Lady Foot Locker
Laurel Regional Hospital
Lazarus Foundation
Ledo Pizza, Route 216
Lighthouse Senior Living
Linwood Center Boutique
Little Lighthouse Daycare
Looney's Pub
Lorien Harmony Hall Assisted Living
Lornwood Day Care & Gifted Center
Lowe's of Columbia, MD
MaggieMoo's, Daybreak Circle
Maple Lawn Community Center
Marilyn J. Praisner Library
Marshalls
MarTar Swim School
Maryland Department of Labor, Licensing and Regulation, Columbia Workforce Center
Maryland Department of Labor, Licensing and Regulation, Howard County One Stop Center (Columbia)
Max Muscle Sports Nutrition
McDonald's, Dobbin Road
Michael's Pub
Mitchell and Best
Modern Lighting
Morningside House of Ellicott City
Neighbor Ride, Inc.
Nightmare Graphics, Inc.
Nika's Hair Studio

Nora's Cafe & Bakery
North Laurel-Savage Multiservice Center
Offit Kurman, Attorneys at Law
Oh, What a Cake!
Owen Brown Interfaith Center
Owen Brown Senior Center Plus
Pangia Technologies, LLC
Performance Private Training
Petco
Picture Perfect Auto Salon
Pizza Hut, Baltimore National Pike
Pottery Shop
Raytheon Solipsys
River Hill Garden Center
Romano's Macaroni Grill
Safeway, Baltimore National Pike
Safeway, Harpers Farm Road
Safeway, Long Gate
Salazar Catering Services/Boardroom Café
Second Edition Books and Music
Serafino's Italian Restaurant
Shangri-La Assisted Living
Small Miracles Cat Rescue
Southern States
St. John Baptist Church
Subway, Minstrel Way
Sunrise Assisted Living
Super Fresh, North Ridge Road
Symmetry Hair Studio
Synergy
Tasty Shirt Factory
Techlab Photo & Digital Imaging
The B & O Railroad Museum
The Baltimore-Washington Conference Center
The Cheesecake Factory
The Dog Wash
The Kake Korner
The Salvation Army
The Ulman Cancer Fund for Young Adults
The Young School, Kendall Ridge
The Young School, Kings Contrivance
Toys"R"Us
Turf Valley Resort
Uno Chicago Grill, Long Gate
Vantage House
Walmart, North Ridge Road
We Buy Autos
Weis Market, All Saints Road
Weis Market, Birmingham Way
Winter Growth, Ruth Keeton House
Y of Central Maryland, Dancel Family Center
Zenyon, Inc.



STUDENTS

Student Services

The Office of Student Services coordinates prevention and intervention programs and services to support students, parents and schools by addressing the cognitive, behavioral, social and emotional health and safety needs of all students to maximize student achievement. The range of programs offered includes School Counseling, Pupil Personnel, Psychological Services, Health Services, Home Schooling, and Home and Hospital Teaching. The Office of Student Services also coordinates the Connection Center, which links families with community agencies for needed support, and Prepare for Success, a community-wide campaign to provide school supplies for children in need. Partners for 2010–2011 included:

Applied Information Technologies, Inc. (AIT)
Association of Community Services of Howard County
Big Brothers Big Sisters of Central Maryland
Chapelgate Presbyterian Church
Christ Church Link
Community Action Council of Howard County, MD, Inc.
Community Action Council of Howard County, Prepare for Success
Counselors Helping (South) Asians/Indians, Inc. (CHAI)
Family and Children's Services of Central Maryland
Grassroots Crisis Intervention Center, Inc.
Howard County Department of Police, Youth Division

Howard County Department of Social Services
Howard County Health Department
Howard County Mental Health Authority
Howard County Office of Children's Services
Howard County School Health Council
Integrative Counseling
Maryland Department of Juvenile Services
Mediation & Conflict Resolution Center (MCRC) at Howard Community College
MSA-The Child & Adolescent Center
National Alliance on Mental Illness (NAMI)
PTA Council of Howard County
Volunteer Center Serving Howard County
Way Station, Inc. – Howard County
Woodstock Job Corps Center

Student, Family and Community Services

Dedicated community organizations, governmental agencies, and faith-based groups work with the Office of Student, Family and Community Services to support student achievement. Services provided include tutoring, mentoring, career exploration, and social and cultural experiences. Partners for the 2010–2011 school year included:

A-OK Mentoring-Tutoring, Inc.
African American Coalition of Howard County
AFRO
Alpha Kappa Alpha Sorority, Inc.
Alpha Phi Alpha Fraternity
Black Student, Family, and Community Network
Columbia Center for Theatrical Arts/Toby's Dinner Theatre
Columbia Housing Corporation
Conexiones, Inc.
Council of Elders of the Black Community of Howard County
Delta Sigma Theta Sorority, Inc., Columbia, Maryland Alumnae Chapter

Education and Career Empowerment Center
FIRN, Inc.
Forest Ridge Apartments
Howard Community College
Howard County Department of Police
Monarch Mills Community
Morgan State University
NAACP, Howard County Branch
National Network of Partnership Schools, Johns Hopkins University
Omega Psi Phi Fraternity, Tau Pi Chapter
The Links, Incorporated, Columbia, Maryland Chapter

Waterloo Elementary School

Staff and Students Thank Our Outstanding Business Partners:

- Eggspectation
- Howard Bank
- Chick-Fil-A — Executive Park Dr.
- Victory Martial Arts

For their Generosity and Support



Folly Quarter MIDDLE SCHOOL

"Soaring to new heights"

Extends a Warm and Sincere Thank You to Our Business Partners

Barnes and Noble Booksellers
Chick-fil-A of Columbia Mall • CoHo Grill
Howard County Library, Glenwood Branch
Howard County General Hospital
Western Howard County Soccer, Inc.

Iksan Eoyang Middle School, South Korea
Eggspectation Restaurant • Eyre Bus Service, Inc. • Glenwood Lions Club

Career Research and Development and Passport to the Future

Career Research and Development empowers students to create a vision for their future through quality academic coursework, progressive career development, and appropriate work opportunities. After a series of interest, aptitude and personality assessments, students identify their assets and strengths and apply that knowledge as they investigate careers and college options.

Passport to the Future is a joint initiative between the Howard County Chamber of Commerce and the Howard County Public School System. A Passport business employs students who have earned a Passport certificate by demonstrating a mastery of workplace skills. Career Research and Development and Passport to the Future partners for 2010–2011 included:

ADVISORY COUNCIL

Ascend One Corporation
British American Auto Care, Inc.
Carrollton Bank
Eleve Group, Inc.
Howard Community College
Howard County Chamber of Commerce
Howard County General Hospital,
A Member of Johns Hopkins Medicine
Lazarus Foundation
M&T Bank, Clarksville Branch
Maryland Department of Labor, Licensing
and Regulation, Columbia Workforce
Center
Spectrum HR Solutions
Volunteer, Jane Schuchardt
Wilhelm Commercial Builders, Inc.
Yolanda Voss Studio, International

PARTNERS

A Tradition of Excellence Auto
Abercrombie & Fitch
All Wrapped Up
AMC Theatres
Animal Welfare Society
Antwerpen Toyota
Arrowwood Shepherds, Inc.
Arthritis Care Specialists of Maryland
As You Like It Salon and Spa

Athelas Institute
Atholton Adventist Academy
Azul 17 Mexican Cuisine and Tequila Lounge
BJ's Wholesale Club
Bob Evans Restaurant
Borders Express
Bra-La-La
Bridgeway Community Church
Brook Grove Foundation
Brookfield Christian School
Build-A-Bear Workshop
Cartoon Cuts
CGC Builders, LLC
Cheeburger Cheeburger
Chick-fil-A
Chicken Out Rotisserie
Children's Manor Montessori
Chuck E. Cheese, Fairlawn Avenue
CimaTalent Management, Inc.
Coldstone Creamery
Columbia Association
Columbia Association, Before and After
School Care
Columbia Montessori School
Columbia Teen Center
Cosi
Creative Construction
CVS Pharmacy, Guilford Road
Daedalus Books Warehouse Outlet

David J. Drywall
Domino's Pizza
Dorsey Hall Medical Center
Downtown Locker Room
Engine Parts Warehouse, Inc.
Facci Restaurant
Fairway Hills Golf Club
Fatburger
Five Below, Inc.
Five Guys, Inc.
Food Lion
Footaction
Foster's Country Store
GameStop
Genesis Bridal and Formal
Giant Food, Center Park Drive
Giant Food, Cradlerock Way
Giant Food, Daybreak Circle
Giant Food, Laurel Bowie Road
Giant Food, Baltimore National Pike
Griggs University
Gymboree
Happy Dog Care, Inc.
Harris Teeter, Inc.
Harris Teeter, Westside Boulevard
Head Start, Tubman Center
Heartlands Senior Living Village
Heyser's Cycles
Home Depot
Howard Community College
Howard County Department of Recreation
and Parks
Howard County General Hospital,
A Member of Johns Hopkins Medicine
Howard County Library
Integrity Martial Arts
J & K Hair Techniques
JC Penney
Jo-Ann Fabric and Craft
Justice
Kelsey's Restaurant
Kendall Hardware
KFC
Laurel Roller Skating Center
Lazarus Foundation
Ledo Pizza, Daybreak Circle
Ledo Pizza, Route 216
Ledo Pizza, Scaggsville Road
LifeSpan Network
Looney's Pub
Lorien Harmony Hall Assisted Living
Lornwood Day Care & Gifted Center
Majesty Cleaning Service
Marshalls
Mason & Friends

Massage Envy
McDonald's of Howard County
McDonald's, Liberty Road
Mediterranean Kabob House
Merriweather Post Pavillion
Michaels
Mobil 1 Lube Center
NeighborCare Pharmacy
New York J & P Pizza
Nightmare Graphics, Inc.
Objects Found
Offit Kurman, Attorneys at Law
Oh, What a Cake!
On the Border, LLC
Ourisman Hyundai
Party City
Pasta Plus Restaurant & Market
Pepperjacks Deli
Petco
Physicians Eye Care and Laser Center
Pink Beauty Supplies
Pizza Hut
Quest Fitness
Raj Real Estate Consultant
Regal Movie Theaters, Snowden Square
River Hill Apothecary
Road Runner Sports Retail, Inc.
Royal Farms, Ten Oaks Road
Safeway, Harpers Farm Road
Safeway, Long Gate
Side Pockets Bar & Grill
Sourcefire
Spirit of Faith Christian Center
St. Alphonsus Preschool
Star Learning Center
Strands II Hair Studio
Surfing Turtles
T.G.I. Friday's
Terri L. Hill, M.D., P.A.
The Gathering Place
The Jim Rouse Theatre
The Salvation Army
Union Jack's British Pub
UPS Customer Center
Vantage House
Weis Market, Birmingham Way
Weis Market, Washington Boulevard
West Lanham Hills Fire Department
Zips Dry Cleaners

Gifted and Talented Program

The Gifted and Talented Program provides accelerated and enriched learning opportunities to students showing exceptional ability or interest in advanced-level studies. Gifted and Talented Resource Teachers at the elementary and middle school level enhance the standard curriculum and provide specialized services to develop students' unique talents and aptitudes. At the high school level, intern/mentor opportunities provide a formal, site-based, academic relationship between a high school student and a professional. In this structured relationship, mentors guide students in the pursuit of knowledge and scholarly research. Program partners for the 2010–2011 school year included:

Accelerate Your Game
Advanced Technology & Research, Inc.
AFS International
American Film Institute
Aquatic Rehabilitation Center
Axis Sport Performance Training
B. Funk Dance Company
Baltimore Jewish Times
Baltimore Orioles
Banta-Campbell Architects
Barnes & Noble Booksellers
Baywood Design/Build Group, Inc.
Bear Creek Dental
Brasher Design
Brookville Animal Hospital
Bryant Woods Montessori
Capitol Debate
Cat & Dog Hospital of Columbia

CENTERSTAGE
Central Maryland Oncology Center
Columbia Animal Hospital
Columbia Center for Theatrical Arts/
Toby's Dinner Theatre
Comcast Cablevision of Howard County
Comfort Suites
Coover & Barr, LLC
Crafton Dental Suite
Days End Farm Horse Rescue
Dermatology & Advanced Skin Care
Dr. Fred Lewis
Dunloggin Veterinary Hospital
E-City Corporation
Earth Treks Climbing Center
Ellicott City Eye Care
Enterprise Foundation
Feldman's Pharmacies

Ft. Meade Flying Club
Grace Community Church
Habitat for Humanity of Howard County
Harbor Hospital
Head Start of Howard County, Community
Action Council
Heart to Heart, LLC
Hospitality Healthcare, LLC
Howard Community College
Howard County Circuit Court, 5th
Judicial Circuit
Howard County Council
Howard County General Hospital,
A Member of Johns Hopkins Medicine
Howard County Health Department
Howard County Office of the State's
Attorney
Howard County Office on Aging, Florence
Bain Senior Center
Image Perfect
Integrated Recruiting Consultants (IRC)
JHU Chemical Propulsion Laboratory
Johns Hopkins Hospital and Health System
Johns Hopkins University
Johns Hopkins University Applied Physics
Laboratory
Johns Hopkins University School of
Medicine
Katkow Dentistry, LLC
Kennedy Krieger Institute
Kernan Orthopaedics and Rehabilitation
Lady Di Interiors
Law Office of Cecilia B. Paizs, P.A.
Law Office of Michael Silverman
Legg Mason
Lloyd, Kane, Wieder, & Willis, PA
Maryland Department of Business and
Economic Development
Maryland State Board of Education
Maryland Transit Authority
MBC Precision Imaging
McFarland and Associates, Inc.
MGA Pension Consultants
Montgomery County General Hospital
Mount Washington Pediatric Hospital
Mt. Airy Gazette
NASA Goddard Space Flight Center

National Institutes of Health
Norris Acura West
North Western Mutual
Nurturing Nest Montessori
Orthosport Physical Therapy
Paradise Animal Hospital
Parkinson's & Movement Disorders
Center of Maryland, LLC
Parnes, May, and Associates, MD
Patuxent Publishing Company
Paul Duncan & The Duncan Group
Peabody Conservatory
Pimlico Race Track
Pixel Workshop, Inc.
Potomac Valley Orthopedic Associates
Saint Agnes Hospital
Sears Pediatrics
Sheppard Pratt Hospital
Sinai Hospital
Smile Savers Dentistry
Special Olympics of Maryland
Spurlock Equine Associates
Stevenson University
Stewart/McCready Architects, PA
Symmetry First Architects, LLC
Tai Sophia Institute
Target
Ted Annenberg, L.Ac. P.C.
Terri L. Hill, M.D., P.A.
The Baltimore Sun Company
The Business Monthly
The Horizon Foundation
The Redhead Companies
The Silver Heron
The Walters Art Museum
UMBC, College of Education
United States Congress
United States Department of Agriculture
United Therapeutics Corporation
University of Maryland Medical Center
University of Maryland, Baltimore
W. R. Grace & Co.
Waredaca



Lisbon Elementary School Students, Staff, PTA and Community

extend a warm thank you to our business partners

*Eggspectations
Glenwood Branch Library
McDonalds of Woodbine
Pizza Hut of Woodbine
Sandy Spring National Bank*

Laurel Woods Elementary School

Appreciates our Supportive Partners in Education

GRACE COMMUNITY CHURCH

**MCDONALD'S,
ALL SAINTS ROAD**

SAVAGE LIBRARY

**HOWARD
COMMUNITY COLLEGE**

APPLIED PHYSICS LAB

**HOWARD COUNTY
GENERAL HOSPITAL**


MULTISERVICE CENTER

FIRM, INC.

DOLLAR PLUS STORE

**UNIVERSITY OF MARYLAND
GARDEN INFORMATION CENTER**

Thank you for your support!



Employee Incentive Program

The Employee Incentive Program (EIP) is a benefit provided by local businesses to recognize the commitment and dedication of all HCPSS employees by providing discounts or other special offers for their products or services. This program helps the school system's Human Resources office attract and retain the best educational staff available. Businesses that participated in 2010–2011 included:

39 Minute Workout
A Plus Carpet and Flooring
Abby's Creations
Ace Relocation Systems, Inc.
Adventure Park USA
Alarm Services of Maryland
Alliance Capital Management, LLC
Antares Musicians
AT&T Mobility
Azul 17 Mexican Cuisine and Tequila Lounge
Bank of America
Bankers Life and Casualty
BB&T
Body Wise Physical Therapy and Acupuncture
Border's Books & Music
Cafe De Paris
Camp Bow Wow
Capital Mortgage Financial
Christopher's Barber Studio
Club Pooche
Clyde's of Columbia
Columbia Association
Columbia Memorial Park
CQI Associates, LLC – MD Residential
Energy Co-op
Crafton Dental Suite
CruiseOne
Curves, Howard County
Cutie Patooties
Daedalus Books Warehouse Outlet
Dell
Electra Entertainment
Envy Mobile Detailing and Restoration
Equity Mortgage Lending
Erie Insurance Group
Execuhome Realty
Fairway Hills Golf Club
Feet First Sports

First Class for Your Child
First Financial Group
Gift Tree
Great Kids Village
Great Oak Lending
Greenberries Company
GreeNEWit
Ground Control
GSF Mortgage Group
Hartford Computer Group, Inc.
Integrated Financial Solutions
Island Club Apartments
J. Jill
JAMAR Personalized Services
Jazzercise Fitness Center
Jiffy Drop
Jilly's Bar & Grill
Jim Coleman Honda
JK Moving & Storage
Jump!Zone Columbia
KG Title, Inc.
Krav Maga Maryland
Landscaping by Alfredo
Level Zin
Liberty Tax Service
Little Hands Cookie Co.
Longaberger (Independent Consultant)
Longevity Medical Spa
LV Creative Designs
M&T Bank, Clarksville Branch
Marriottsville Acupuncture
Medifast
Mercer Carpet One Floor and Home
Move and Change
My Gym Children's Fitness Center
National Fidelity Mortgage
Nationwide Insurance Company
New Penn Financial
New York Life Insurance Company
Noonan Construction

Peer2Peer Tutors
Physicians Weight Loss Centers
Presidential Bank
Primary Residential Mortgage, Inc.
Pura Vida Med Spa
Quest Fitness
R.E. Shilow Realty Investors, Inc.
Reisman Video Productions
Rocky Mountain High Financial Service
Royal Air Flight Training, Inc.
Safe and Sound Hounds
Salon Marielle
Salon Tusey
Sandy Spring Bank
Six Flags America
Sleep Number Store
Soloman System's Technologies
Sprint
Sunoco Car Care Center, Columbia
Sunoco Car Care Center, Dorsey Hall

T-Bonz Grille & Pub
Tai Sophia Institute
The Body Image Therapy Center
The Law Office of Brett M. Dieck, LLC
The Pampered Chef
The Scholar Athlete Academy
The Tomato Palace
The Vertical Connection Carpet One
Total Image Services
Training @ Wellness Evolution
Two Eagles Lodge
Union Jack's British Pub
Wachovia Bank
Weichert Realtors – New Colony
Wellington Interiors
Wellness Evolution
Wessel's Florist and Weddings
Wrye's Apparel
Zapata's Restaurant & Bar

Career and Technology Education

The Office of Career and Technology Education (CTE) is responsible for the development of courses and curriculum in the areas of Business Education, Career Academies, Career Research and Development, Computer Science, Family and Consumer Science, and Technology Education. CTE programs integrate the strengths of an academic education with the practical benefits of career and technology education. With the guidance of advisors and industry mentors, students have the unique opportunity to explore a career interest in-depth during high school. CTE partners for the 2010–2011 school year included:

PARTNERS

ACS Transportation Services
Active Day Adult Daycare
Advanced BioNutrition Corp.
Aida Bistro
Allan Homes, Inc.
Allen & Shariff Corporation
Apple Ford
Applied Information Technologies, Inc. (AIT)
Associated General Contractors
Baltimore Gas and Electric Company
Baltimore Metro Chapter of Associated Builders & Contractors
Baywood Design/Build Group, Inc.
BITHGROUP Technologies
Blue River Construction
British American Auto Care, Inc.
Capital Women's Care Howard County
Center of Marine Biotechnology
Central Maryland Rehabilitation Center

Cherry Hill Construction, Inc.
Chesapeake Physical and Aquatic Therapy
Cyber Watch Center, PGCC
Disorders Center of Maryland
dw taylor associates, inc.
Eastern Stair Builders
ECS Mid Atlantic, LLC
Ed-U-Care Learning Center
Elkridge Furnace Inn
Encore Homes, Inc.
Essential Family Chiropractic
Expert Trading Limited
Federal Communications Commission
Hamel Builders, Inc.
Health South
Hillis-Carnes Engineering Associates, Inc.
Hillmuth Certified Automotive
Hilltop Electric
Hobbit's Glen Golf Club
Honeywell Technology Solutions Inc. (HTSI)
Howard Community College

Howard County General Hospital,
A Member of Johns Hopkins Medicine
Howard County Office on Aging
J. Vinton Schafer & Sons, Inc.
Jim Coleman Honda
Joel Goodman, D.D.S.
John D. Miller Builders, Inc.
Johns Hopkins Hospital and Health System
Johns Hopkins University Applied Physics
Laboratory
Kennedy Krieger Institute
Lazarus Foundation
Longwood Senior Center
Maritime Applied Physics Corporation
Martek Biosciences Corporation
Maryland Automobile Dealers Association
Maryland Hospitality Education Foundation
Maryland Orthodontic Specialists
Mays and Associates
Meridian Anesthesia
MTH Electric Trains
Nantucket Center
NeighborCare Pharmacy
Orthosport Physical Therapy
Owen Brown Senior Center Plus
Patuxent Publishing Company
Reedy Electric
Saini Orthodontics
Saint Agnes Hospital
Science & Technology Corp.
Sheraton Columbia Town Center Hotel
Sidney Kimmel Comprehensive Cancer
Center at Johns Hopkins
Sourcefire
Technology Assessment & Transfer, Inc.
The Arc of Howard County
The Columbia Bank
The Troutman Co.
The Ulman Cancer Fund for Young Adults
The Women's Ob-Gyn Group/Capital
Women's Care
United States Department of Agriculture
University of Maryland Medical Center
University of Maryland School of Medicine,
Department of Neurology
University of Maryland School of Medicine,
Department of Medical and Research
Technology
University of Maryland School of Medicine
Warehouse Concepts
Watermont Pharmacy
Wilhelm Commercial Builders, Inc.
Win Kelly Chevrolet
Xerox Corporation

**ACADEMY OF FINANCE ADVISORY
COUNCIL**

Aaron Altscher Consulting
Ascend One Corporation
Eagles View Consulting, LLC
HCTA Federal Credit Union
Howard Bank
Howard Community College

ING Financial Partners
Johns Hopkins University Applied Physics
Laboratory
Junior Achievement of Central Maryland, Inc.
M&T Bank, St. Johns Lane
MakingCHANGE: A Financial Wellness
Center
Maryland Council on Economic Education
Merrill Lynch
Morgan Stanley Smith Barney
National Academy Foundation
National Institutes of Health
Northwest Savings Bank
PNC Bank
PROCAS, LLC
RW Investment Strategies
Sandy Spring Bank
Star Hotels
The Light Brigade, LLC
Wagener-Lee, LLC Wealth Advisors
University of Maryland, College Park

**ACADEMY OF INFORMATION
TECHNOLOGY ADVISORY
COUNCIL**

Cisco Systems, Inc., Cisco Networking
Academy Program
Data Networks
Educational Technology Policy Research
and Outreach, Inc. (ETPRO)
Howard Community College
Johns Hopkins University Applied Physics
Laboratory
NB-Global, LLC
SAIC

**ARCHITECTURAL DESIGN
ADVISORY COUNCIL**

Arbaugh Architecture Studio
Banta-Campbell Architects
Barwick Interiors
CW Architects, Inc.
Dean Robert Camlin & Associates, Inc.
DNC Architects
dw taylor associates, inc.
Morgan State University
OLBN, Inc.
Pro-Built Construction, Inc.
Symmetry First Architects, LLC
Transforming Architecture
University of Maryland School of
Architecture, Planning & Preservation
Waldon Studio Architects & Planners, P.C.

**AUTOMOTIVE TECHNOLOGY
ADVISORY COUNCIL**

Apple Ford
British American Auto Care, Inc.
Ed's Columbia Automotive & Transmissions
Hillmuth Certified Automotive
Howard County Office of Central Services
Lisbon Citgo Auto Center
Town & Country Auto Repair

**BIOTECHNOLOGY ADVISORY
COUNCIL**

Howard Community College
National Science Foundation
UMBC Department of Biological Sciences
University of Maryland School of Medicine,
Department of Neurology
United States Department of Agriculture

**CHILD DEVELOPMENT/TEACHER
ADVISORY COUNCIL**

Howard Community College
Howard County Library
Howard County Office of Children's Services
Towson University

**CONSTRUCTION ADVISORY
COUNCIL**

Allen & Shariff Corporation
Associated Builders and Contractors,
Baltimore Metropolitan Chapter
Baywood Design/Build Group, Inc.
Brasher Design
Community College of Baltimore County
dw taylor associates, inc.
Eastern Stair Builders
Encore Homes, Inc.
Hancock & Albanese, Inc.
Hobbit's Glen Golf Club
J. Vinton Schafer & Sons, Inc.
John S. Wilson Lumber
Ken Griffin Plumbing & Heating
Reedy Electric
The Troutman Co.
Wilhelm Commercial Builders, Inc.

**ENERGY POWER &
TRANSPORTATION ADVISORY
COUNCIL**

ACS Transportation Services
Baltimore Gas and Electric Company
Johns Hopkins University Applied Physics
Laboratory
The TIME Center, CCBC

**HEALTH & EMERGENCY
TECHNICIANS ADVISORY
COUNCIL**

Essential Family Chiropractic
Howard Community College
Howard County General Hospital,
A Member of Johns Hopkins Medicine
Howard County Office on Aging, Florence
Bain Senior Center
NeighborCare Pharmacy

HOSPITALITY ADVISORY COUNCIL

Anne Arundel Community College
Belmont Conference Center
Best Western, BWI
Bistro Blanc
Comfort Suites, Columbia Gateway
Elkridge Furnace Inn

Hampton Inn, Columbia
Hilton Garden Inn
Hilton, Columbia
Hospitality, Culinary Arts and Tourism
Institute
Howard Community College, Hospitality &
Culinary Management
JPB Enterprises, Inc.
La Quinta Inn & Suites, Columbia/Jessup
Marriott Courtyard
Marriott Inn & Conference Center, UMUC
Maryland Hospitality Education Foundation
Maryland Hotel & Lodging Association
Maryland Office of Tourism Development
Maryland State Department of Education
Saval Foodservice
Sheraton Columbia Town Center Hotel
Sleep Inn & Suites, Laurel
Springhill Suites, Columbia
Star Hotels
The Rumor Mill
Turf Valley Resort
Volunteer, Ronald Meliker

**PROJECT LEAD THE WAY
ADVISORY COUNCIL**

Howard Community College
Johns Hopkins University Applied Physics
Laboratory
Maryland MESA
Maryland State Department of Education
NASA Goddard Space Flight Center
Naval Surface Warfare Center, Carderock
Division
Northrop Grumman Corporation
SCS Engineers
University of Maryland, Baltimore County
Volunteer, Maria Slaughtner

**VISUAL COMMUNICATIONS &
ANIMATION ADVISORY COUNCIL**

Corridor Printing
Howard County Office on Aging
Illume Communications
Mays and Associates
New Village Media
Printing & Graphics Association, MidAtlantic
(PGAMA)
Super Book Deals
The Athletic Group
The Columbia Bank



Superintendent's Advisory Council for Business/Education Partnerships

The Superintendent's Advisory Council for Business/Education Partnerships (SACBEP) is a forum for dialogue between the superintendent and key members of the Howard County business and service community. Members of the Council share best practices and experiences on a variety of existing and emerging business issues.

Sydney L. Cousin

*Superintendent,
Howard County Public School System*



Cathy Bell
*Owner,
McDonald's of
Howard County*



Jay Blackman
*Executive VP &
COO, Howard
County General
Hospital, A
Member of
Johns Hopkins
Medicine*



David Bower
*President &
CEO, Data
Computer
Corporation
of America*



Dorothy Doub
*President,
Custom Media
Options*



Daniel Gaffney
*Owner,
Techlab Photo
& Digital
Imaging*



Michael Galeone
*Executive Vice
President,
The Columbia
Bank*



Steve Girard
*Community
Impact
Ministry, Grace
Community
Church*



Brian Hubbard
*Principal,
Booz Allen
Hamilton*



Lois Mikkila
*Director,
Howard
County
Department
of Citizen
Services*



Cole Schnorf
*Senior Vice
President,
Manekin LLC*



Maurice Simpkins
*Vice President,
Public Affairs,
The Ryland
Group*



Wayne Wilhelm
*Chairman &
CEO, Wilhelm
Commercial
Builders, Inc.*

*Building Howard County's
Future Together*

**THANK YOU,
BUSINESS & COMMUNITY
PARTNERS!**

410-313-6655

partnerships@hcpss.org

www.hcpss.org/aboutus/partnership

**HOWARD COUNTY**
PUBLIC SCHOOL SYSTEM



CA makes after-school time fun!

**See how much fun you and your kids
can have with Columbia Association!**

Columbia Association offers —
In-line and Roller Skating, Swimming,
Birthday Parties, Mini-Golf, BMX,
KidSpace, Batting Cages, Martial Arts,
Summer Camps, Art Center,
Ice Rink, Teen Center and more!

Visit CAMonthly.org/KidsKorner and click on Fun for Kids at CA or call 410-715-3000 to learn more.

