



EDUCATIONAL **Partnerships**

2013-2014 Annual Report

HOWARD COUNTY PUBLIC SCHOOL SYSTEM

SUPERINTENDENT'S Message



We are fortunate in Howard County that community involvement is among our greatest assets. Businesses, non-profit organizations and government agencies donate countless hours, immeasurable resources and invaluable expertise to help our students build a mindset of success. Thanks to these community partners, students have many opportunities to discover new interests, practice skills, and develop their strengths.

The activities highlighted in this report illustrate many of the ways that our partners add value to the educational process, helping to secure the future for our community as well as for our children.

HCPSS is indebted to all of our community partners for the generous support that fills a critical role in providing a world class educational program. Thank you for joining with us to prepare each Howard County student for lifelong success.

Sincerely,

Renee A. Foose, Ed.D.



Contents

| | |
|---|-------|
| Introduction | 3 |
| Preparing for Life, College, and Career | 4-5 |
| Learning Linked to Well-Being | 6-7 |
| Benchmarks and Best Practices | 8 |
| Professional Growth and Learning | 9 |
| Ready to Learn | 10 |
| Solving Real-World Problems | 11 |
| Staff and Community Collaboration | 12 |
| Importance of Health and Work-Life Balance..... | 13 |
| School Partners | 14-17 |
| At-Large Partners | 18-19 |
| Student Services..... | 19 |
| Student, Family, and Community Services | 20 |
| Career Research and Development..... | 20 |
| Career and Technology Education..... | 21-22 |
| Special Education | 23 |
| Gifted and Talented..... | 24 |
| Staff Discount Program | 25 |
| Health and Wellness | 25 |
| Volunteer Opportunities | 26-27 |

The Educational Partnerships Annual Report reflects partnerships active between July 1, 2013 and June 30, 2014.

If there are any errors or omissions, please accept our apologies and inform the Partnerships Office at 410-313-6655 or partnerships@hcpss.org.

The BOARD OF EDUCATION of Howard County 2013-2014



Ellen Flynn Giles
Chairman



Ann De Lacy
Vice Chairman



Frank J. Aquino,
Esq.



Sandra H. French



Brian J. Meshkin



Janet Siddiqui,
M.D.



Cynthia L.
Vaillancourt



Albert B. Corvah
Student Member

EDUCATIONAL Partnerships

2013-2014 Annual Report

HCPSS STRENGTHENED Through PARTNERSHIPS

A world-class school system benefits from the expertise, enthusiasm and ingenuity of community businesses and organizations. HCPSS is truly strengthened through partnerships as more than 1,000 businesses, government agencies, educational institutions, and community organizations partnered with HCPSS schools, curricular offices and business departments during the 2013-14 school year. HCPSS leverages the talent and resources of its partners to support all of the strategic goals highlighted in the school system's five-year strategic plan, *Vision 2018: Fulfilling the Promise of Preparation*.

Preparing for **LIFE, COLLEGE, AND CAREER**

In addition to the “Three Rs,” students today need ingenuity, analytical, and collaboration skills to be prepared for an increasingly complex life and the global work environment of the 21st century. Partners provide students with real-life experiences where they can develop the skills necessary for living and working in a rapidly changing world.

Community partners help equip students with the knowledge and skills to effectively navigate constantly evolving life choices – from evaluating a growing number of health care

alternatives, to participating in an increasing global political environment, and analyzing a wide array of personal finance options.

Students from kindergarten to high school benefit as partners expand learning beyond the classroom. Elementary students become aware of different types of work while they are introduced to the variety of careers, products, and services present in their community. They also begin to learn how decisions they make can impact others and their environment.

In middle school, students identify steps for effective decision-making and goal-setting, and how to apply those processes to education, career, and life choices. The **Howard County Library System’s Teen Time** and the **Alpha Kappa Alpha Sorority, Inc., Iota Lambda Omega Chapter** are two partnerships for middle school students focusing on the importance of developing healthy behaviors, conflict resolution skills, and compassion for others.



During the **University of Maryland, Extension, Howard County Master Gardeners’ Our Environment in Our Hands** program, fourth grade students apply creativity, innovation, problem-solving, and critical thinking skills to explore and analyze how simple choices they make can directly affect the local environment and the health of the Chesapeake Bay.

The HCPSS draws upon the expertise and resources of many partners including community banks, **Maryland Council on Economic Education, MakingChange**, and others to help prepare students with the skills and knowledge needed to make sound personal financial decisions.

*Lake Elkhorn Middle School students apply their personal and business finance knowledge by running a simulated town as part of the **Junior Achievement of Central Maryland, Inc. BizTown** program.*



High school students continue to explore career options and then develop an individual school-to-career plan. Before graduating, each student creates a resume and participates in an employment-like interview. Students may also elect to enroll in one of several programs that offer more extensive immersion in a career field of interest while gaining real-world work experience.

Some of these programs give students the opportunity to earn college credits, achieve nationally recognized certifications, receive technical training, and participate in internships. Representatives from business and higher education organizations such as **Howard County General Hospital, A Member of Johns Hopkins Medicine; British American Auto Care, Inc.; Data Networks; and Howard Community College** review the programs to ensure that the curriculum is aligned with established academic, college and career-readiness, and technical standards, and that graduates meet employers' and industry expectations.



Baywood Design/Build Group, Eastern Stair Builders, Hancock & Albanese, J. Vinton Schafer & Sons, North Point Builders, and Wilhelm Commercial Builders mentor Construction Academy students, giving them hands-on experience and knowledge in preparation for the National Center for Construction Education and Research certification exam.



McDonald's at Maple Lawn is one of many businesses supporting the structured, supervised work program that HCPSS provides for high school students with mild to moderate disabilities. Teachers work closely with both students and employers to ensure satisfactory performance on the job as students develop the skills, habits, and confidence needed to work independently.



Emergent Biosolutions Inc., U.S. Food and Drug Administration, University of Maryland School of Medicine, and USB Products are just a handful of partners helping students in the Biotechnology Career Academy acquire the skills and techniques used in molecular biology. Students in this academy are participating in one of the fastest growing and expanding fields in today's scientific community and gaining experience in medicine, pharmacology, ecology, forensic science, agriculture science, and the biotechnology industry.

Learning Linked to **WELL-BEING**

Decades of research shows that students' ability to learn, achieve, and succeed is directly linked to their well-being. While academic rigor continues to be the foundation of instruction, HCPSS understands the importance of also focusing on the social, emotional and physical needs of students.

Through extracurricular activities, the arts, and athletics, students develop essential skills and abilities including creativity, problem solving, innovation, teamwork, and effective communications. Partners are actively involved and fully support the school system's efforts to provide a variety of opportunities and nurturing environment for all students.



Columbia Association's Youth and Teen Center at The Barn (YTC) partners with the school system to provide a whole day model for well-being and wellness by offering youth and teens year-round education and recreation. Students participating in YTC programs have the opportunity to learn leadership skills, build self-esteem, and engage in community service.

See video of the programs available at The Columbia Association Youth and Teen Center @ The Barn: www.youtube.com/watch?v=LLRMMEYINQY



To ensure that all students have what they need to attend the prom, **Zeta Phi Beta Sorority, Inc.**, **Lambda Gamma Zeta Chapter** and the **Phi Beta Sigma Fraternity, Inc.** joined together to host *A Pretty & Polished Affair* which provides prom attire and accessories for students.



HCPSS elementary and middle schools partner with **Girls on the Run of Central Maryland** to promote self-respect, self-confidence, and positive choices through daily physical activity. Girls on the Run, a transformational physical activity-based positive youth development program for girls in 3rd through 8th grade, culminates with a celebratory 5k running event. The goal of the program is to unleash confidence through accomplishment while establishing a lifetime appreciation of health and fitness.



Students participating in **ManneqART** workshops learn and apply new technologies from wearable art artists.

The second annual **ManneqART** competition was a perfect venue for students to discover and build upon their strengths and interests. The contest showcases the best in imaginative hair sculpture, special effects makeup, costuming and digital art.



Inspiring and nurturing a lifelong love of symphonic music in students is the goal of the partnership between the **Columbia Orchestra** and the school system. Each year, the orchestra brings high-quality, affordable, full symphony orchestral concerts to HCPSS third grade students that are fun and interactive. Partnerships with **The Mall in Columbia; Columbia Art Center; Howard County Library System, Miller Branch; and Howard County Center for the Arts** offer space to host student art exhibits, which allows Howard County residents to enjoy the talent and work of many of the county's younger citizens.

Benchmarks and BEST PRACTICES

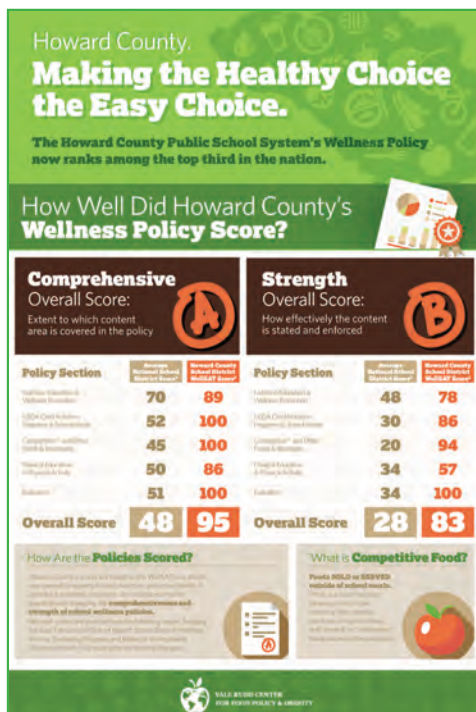
A world class school system is fueled by efficient and effective organizational practices. HCPSS continues to redesign processes to increase efficiency and reduce waste by using continuous improvement methodologies such as Lean Six Sigma.

Employees improve school system procedures by working with community partners to identify, evaluate, and when appropriate, implement industry standards and best practices. For example, the HCPSS collaborates with the **Howard County Police Department** and the **Howard County Department of Fire and Rescue Services** to ensure student and staff safety by regularly reviewing school plans, evaluating and updating emergency procedures, and conducting emergency exercises.



Award winning HCPSS Athletic Trainers work to keep student athletes injury free.

In January 2014, the National Athletic Trainers Association honored all 12 HCPSS high schools with a Safe Sports School Award, a national award given to schools that meet a set of stringent criteria for crucial steps taken to keep their athletes free from injuries. Additionally, **Children's National Medical Center** and HCPSS provide a state-of-the-art Sports Concussion Program to detect and treat concussions in high school athletes. Partners **Maryland SportsCare & Rehab, LLC** and **MedStar Union Memorial Orthopaedics and Sports Medicine** offer professional instruction to HCPSS Athletic trainers on injury prevention, rehabilitation and sports-specific fitness.

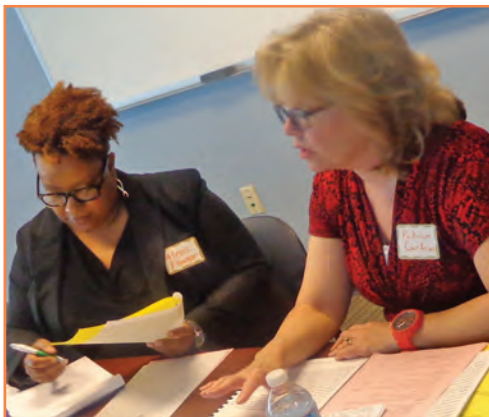


When developing its new wellness policy, HCPSS collaborated with the **Horizon Foundation, Community Action Council of Howard County, Healthy Howard, Howard County Health Department, Howard County Economic Development Authority, Rumor Mill Restaurant,** and other community partners and volunteers to review research-based best practices and benchmark comparison organizations.

An evaluation of the policy by the Yale University Rudd Center for Food Policy and Obesity ranked the policy among the best in the nation, with high marks for strength, comprehensiveness, nutritional standards, and evaluation components.

PROFESSIONAL GROWTH and Learning

Training and learning experiences for HCPSS staff emanate from a variety of sources, including community partners. Partners team with the school system to provide professional learning that enhances interpersonal and leadership skills, deepens job-specific knowledge, and helps staff members grow in their professional practice to meet the needs of more than 53,000 students.



HCPSS, a recognized international leader in cultural proficiency, has invited community organizations to participate in several training programs so they may also learn how to develop culturally competent staff, practices and policies. Recently representatives from **HopeWorks** and **Howard County Government** joined school and central office staff at the school system's Cultural Proficiency Level 2 Application training.



Students practice writing Chinese characters at the **Chinese Language School of Columbia**.

With a student population representing 72 countries and speaking 61 different languages, HCPSS looks for ways to learn about the issues affecting students and families of many cultures. Partners offering a cultural perspective include the **Howard County Chinese School**, **Chinese Language School of Columbia**, **Kaur Foundation**, **Conexiones**, **CHAI (Counselors Helping (South) Asians/Indians)**, and the **African Art Museum of Maryland**.

HCPSS staff members have opportunities to learn from a variety of notable national and local speakers such as Walter Robb, Co-CEO of **Whole Foods** and Fran Fleisch, Acting Deputy Director of the **National Security Agency**, at **Leadership Howard County, Howard**



County Chamber of Commerce and the **Association of Community Services of Howard County** events and meetings. Likewise, HCPSS supports the Howard County community with information and education. Superintendent Renee A. Foose shared her vision for HCPSS, *Fulfilling the Promise of Preparation*, with business and community leaders at the organizations listed above, as well as the **Rotary Clubs of Howard County, Howard Community College, Towson University, Maryland Business Roundtable for Education** and many more.

Ready to **LEARN**

While Howard County is often cited as one of the wealthiest counties in the nation, an increasing number of families struggle to provide basic needs. Some students come to school facing huge obstacles – poverty, homelessness, and language barriers. Partners help HCPSS reduce these barriers by providing services and supports to families impacted by poverty or new, unfamiliar surroundings.

The **Community Action Council of Howard County**, through its programs **Prepare for Success, Head Start**, and the **Food Bank**, offers essential assistance that helps students come to school ready to learn. Trained volunteers conduct English enrichment activities with small groups of foreign-born students in Club Leap, an after-school program provided by **FIRN**.

Success in Style partners with several schools to advise students on appropriate business attire, practical fashion tips, and interviewing strategies. The nonprofit also provides many students with some of the basics of a work-appropriate wardrobe.



*During the 2013-14 school year, 95 **A-OK Mentoring Tutoring, Inc.**, mentor-tutors met with approximately 230 HCPSS students in 16 schools and eight after school programs.*

HCPSS works with a variety of community organizations to increase student academic and personal achievement. The **African American Community Roundtable, The Council of Elders of the Black Community of Howard County, Conexiones, Johns Hopkins University Applied Physics Laboratory**, local fraternities and sororities, and many others support and help HCPSS strengthen programs that focus on eliminating the achievement gap.

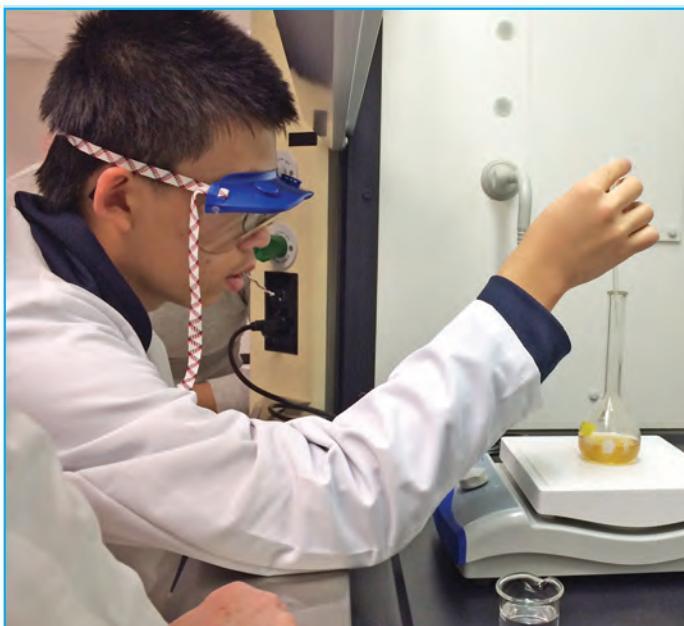


Thanks to the **Bright Minds Foundation**, the school system's educational foundation, nearly 600 students and their families have received internet-ready laptops, printers, and software since the Computers for Students Program was launched in 2008. **Capital One** supports the program by providing an interactive financial literacy training session while **Wegmans** donates a bag of healthy and fresh groceries to each family.

SOLVING

Real-World Problems

Students thrive when they are actively engaged in exploring their interests in a supportive environment. Partners help students understand the relationship between what they are learning in school and the real-world by providing opportunities for students to study a world language, conduct original research, gain work experience as interns, and explore local, regional and global environmental issues.



In July, an experiment designed by Murray Hill Middle School student Kevin He was launched into space on Mission 5 of the **National Center for Science Education's Student Spaceflight Experiments Program**. The study, **Core-Shell Micro/Nanodisks: Microencapsulation in Two Dimensions Under Microgravity**, investigates the

effects of microgravity on microencapsulation, a process that could be used to help control the rate at which a drug is released in the body. The study was one of 15 selected for the flight from a total of 1,344 proposals submitted. HCPSS participation was made possible through the generosity of the **Bright Minds Foundation, Howard Tech Council, ATK, Zenyon, Inc.**, and others.



The students enrolled in the system's Homeland Security and Emergency Management Academy put their classroom learning to work for **CERN, Howard County's Community Emergency Response Network, Inc.**, by assessing more than 3,000 non-residential buildings in the county for nuclear fallout protections. Using ArcMap geospatial processing program and Pictometry aerial image capturing, students analyzed and graded properties, and created maps and route analysis results. HCPSS Superintendent Renee A. Foose explained, "Taking students out of the classroom and into the real-world adds significant value to their work, and benefits the entire Howard County community."

Staff and Community COLLABORATION

Community stakeholders provide input and insight that inform school system plans, actions and decisions. Collaborations with community organizations help build a culture of trust, transparency and mutual respect between school system staff, families and the community.



ARC of Howard County Executive Director Carol Beatty (left) and Board President Ed Wilson present Judy Pattik with their 2014 Excellence in Public Service award.

As chairman of the Howard County Transition Council for Youth with Disabilities, Judy Pattik, Coordinator for HCPSS Special Education, works with representatives from community organizations including the **ARC of Howard County, Athelas Institute, Emerge, Howard Community College, Howard County Chamber of Commerce, Howard County Mental Health Authority, Howard County Government, Howard County Workforce Development, Humanim, and the Linwood Center**, as well as with parent and student representatives, to assist youth with disabilities in their transition from secondary education into the workforce.



Superintendent Renee A. Foose is joined by **Howard County Autism Society** board members, HCPSS Special Education staff and community members to formalize the partnership.

Through its long-standing collaboration with HCPSS, the **Howard County Autism Society** has provided valuable input on new and existing programs and activities, information about the supports available to families, and training for staff, parents, and community members on autism spectrum disorders.



Safe passage to school after a snow storm is made possible through a partnership between HCPSS, **Howard County Department of Public Works, Howard County Department of Recreation and Parks and Columbia Association**. The operations crews work together to ensure that the roads, bus stops and pathways around the county are clear for students and staff to travel to and from school.

Importance of Health and Work-Life **BALANCE**

Leveraging the talent, energy and creativity of teachers and staff is key to ensuring success in the classroom. Staff engagement is critical to student achievement. HCPSS is fortunate that partners also recognize this link and offer their support.

The HCPSS Employee Wellness Program, Commit to Be Fit, benefits from partners who provide information, tools, resources and services to help school system staff create and maintain a healthy lifestyle, including the **American Heart Association, Bring it! Fitness LLC, Healthy Howard, Inc., Maryland University of Integrative Health, Salvere Health and Fitness** and many more. HCPSS employees also receive discounts from nearly 200 local businesses participating in the system's Staff Discount Program.



The **Baltimore Orioles** believe that teachers are classroom all-stars who make a difference in the lives of students and their communities every day. In recognition of the endless dedication of Howard County educators and the importance of work-life balance, the Orioles offer a great chance for fun and friendship by providing school system staff with tickets to attend a baseball game.



Road Runner Sports and more than 100 community businesses and organizations participated with exhibits at the 3rd Annual HCPSS Health & Wellness Expo.



Weight Watchers is one of many partners providing on-site motivation, inspiration and support to help employees reach their health and wellness goals.

Weight Watchers Leader Marjorie Dean congratulates HCPSS employee Sheila Fike on becoming a lifetime member by reaching and maintaining her goal weight.

School Partners

Educational partnerships are collaborative initiatives designed to achieve mutually agreed upon goals and objectives to strengthen and enhance the quality of education in Howard County. The businesses and organizations listed below worked one-to-one with a selected school during the 2013-2014 school year.

ATHOLTON ES

A-OK Mentoring-Tutoring, Inc.
Harris Teeter, Guilford Road
Howard County Library,
East Columbia Branch
The Wildlife Authority

ATHOLTON HS

Grassroots Crisis Intervention
Center, Inc.
Head Start, Old Cedar Lane
Hickory Ridge Village Association
Howard Community College
Howard County General Hospital,
A Member of Johns Hopkins Medicine
Howard County Library,
Central Branch
Sunrise Assisted Living
The Council of Elders of the Black
Community of Howard County
Uno Chicago Grill, Columbia Mall

BELLOWS SPRING ES

Eggspectation
Howard County Library,
Elkridge Branch
McDonald's, Snowden River Parkway
Preston Scheffenacker Properties, Inc.

BOLLMAN BRIDGE ES

A-OK Mentoring-Tutoring, Inc.
Coastal Sunbelt Produce
Continental Societies, Inc.,
Southeastern Howard/Laurel Chapter
Girl Scouts of Central Maryland
Howard Community College
Howard County Library, Savage Branch
Loyola University Maryland,
School of Education
North Laurel-Savage Multiservice
Center

BONNIE BRANCH MS

Eyre Bus, Tour & Travel
Green Valley Marketplace
Howard County Library,
Elkridge Branch

BRYANT WOODS ES

A-OK Mentoring-Tutoring, Inc.
Eggspectation
Howard County Library,
Central Branch
Okinawan Karate Dojo
Phi Beta Sigma Fraternity,
Zeta Alpha Sigma Alumni Chapter, Inc.
Rotary Club of Columbia
Town Center
Uno Chicago Grill, Columbia Mall

BURLEIGH MANOR MS

Eyre Bus, Tour & Travel
Howard County Library, Miller Branch
Sport Clips, Turf Valley
Tersiguel's French Country Restaurant
Turf Valley Resort

BUSHY PARK ES

Glenwood Lions Club
Howard Community College
Howard County Library,
Glenwood Branch
Smoothie King, Columbia

CEDAR LANE SCHOOL

ATG Rehab
Fidos for Freedom, Inc.
Howard County Autism Society
Maple Lawn Business Association
Maple Lawn Homeowners
Association
Prepare for Success, Community
Action Council of Howard County
Town Center Community Association

CENTENNIAL HS

AllCare of Maryland
The Arc of Howard County
Capitol Debate
Grassroots Crisis Intervention
Center, Inc.
The Horizon Foundation
Howard Community College
Howard County General Hospital,
A Member of Johns Hopkins Medicine
Howard County Library, Miller Branch
Sport Clips, Turf Valley
Turf Valley Resort
Under Armour, Inc.

CENTENNIAL LANE ES

Brunswick Zone Normandy
Howard County Library, Miller Branch
Sport Clips, Turf Valley
Turf Valley Resort

CLARKSVILLE ES

Howard County Library, Central Branch
Kendall Hardware
McDonald's, Daybreak Circle
Washington Suburban Sanitary
Commission (WSSC), Green
School Program

CLARKSVILLE MS

Baltimore Museum of Industry
Howard Community College,
Department of Public Safety
Howard County Library, Central Branch
Johns Hopkins University Applied
Physics Laboratory

CLEMENS CROSSING ES

Howard County Library, Central Branch
Locust United Methodist Church
Patient First
Towson University
Uno Chicago Grill, Columbia Mall

CRADLEROCK ES

A-OK Mentoring-Tutoring, Inc.
Continental Societies, Inc.,
Columbia, Maryland Chapter

Good Life Wellness
Helping Hands Enrichment
Leadership Foundation
Howard County Library,
East Columbia Branch
Owen Brown Community Association
Smoothie King, Columbia
We Promote Health

JUDY CENTER AT

CRADLEROCK ES

Cradlerock Children's Center
East Columbia Preschool
Family and Children's Services of
Central Maryland
FIRN, Inc.
Head Start, Dasher Green Center
Howard Community College
Howard County Department of
Recreation and Parks
Howard County Department of
Social Services
Howard County General Hospital,
A Member of Johns Hopkins Medicine
Howard County Health Department
Howard County Library System
Howard County Mental Health
Authority
Howard County Office of Children's
Services
Lowe's, Columbia
Owen Brown Community Association
Ready At Five
Shattuck & Associates

DAYTON OAKS ES

Howard County Library,
Glenwood Branch
New Vision Martial Arts
NSA Mathematics Education Program
Sandy Spring Bank, Clarksville Branch

DEEP RUN ES

A-OK Mentoring-Tutoring, Inc.
ezStorage
Grassroots Crisis Intervention
Center, Inc.
Howard County Library,
Elkridge Branch
Victory Martial Arts

DUCKETTS LANES ES

Green Valley Marketplace
Howard County Library,
Elkridge Branch
Okinawan Karate Dojo

DUNLOGGIN MS

Howard County Library, Miller Branch
Outback Steakhouse, Long Gate
Sport Clips, Turf Valley
Uno Chicago Grill, Long Gate
Whirlz Yogurt Bar & Crepes

ELKBRIDGE ES

Edible Arrangements, Laurel
Green Valley Marketplace
Howard County Library,
Elkridge Branch
Preston Scheffenacker Properties, Inc.
Soccer Dome

ELKBRIDGE LANDING MS

Dunkin' Donuts, Washington Boulevard
Elkridge Furnace Inn
Elkridge Hurricanes
Elkridge Volunteer Fire Department
Elkridge Youth Organization
Grassroots Crisis Intervention
Center, Inc.
Green Valley Marketplace
Howard County Library,
Elkridge Branch
Maryland Marvels
McDonald's, Washington Boulevard,
Elkridge
Outback Steakhouse, Long Gate
Pizza Hut, Montgomery Road
Preston Scheffenacker Properties, Inc.
Staples, Inc.
Subway, Baltimore National Pike
Subway, Washington Boulevard
T-Bonz Grille & Pub
UMBC Athletics

ELLCOTT MILLS MS

Grassroots Crisis Intervention
Center, Inc.
Howard County Library, Miller Branch
Okinawan Karate Dojo
Subway, Centre Park Drive

FOLLY QUARTER MS

Barnes & Noble Booksellers
Coho Grill
Eggspectation
Eoyang Middle School, Korea
Eyre Bus, Tour & Travel
Glenwood Lions Club
Grassroots Crisis Intervention
Center, Inc.
Howard County Library,
Glenwood Branch
Mosquito Joe of Baltimore
Western Howard County Soccer, Inc.

FOREST RIDGE ES

A-OK Mentoring-Tutoring, Inc.
Continental Societies, Inc.,
Southeastern Howard/Laurel Chapter
Howard County Library,
Savage Branch
Mother Nature's
North Laurel-Savage Multiservice
Center

FULTON ES

Boarman's Market
Chick-Fil-A, Johns Hopkins Road
Howard County Library,
Central Branch
Maple Lawn Business Association
The Pearl Modern Spa and
Boutique
Sandy Spring Bank, Fulton Branch

GLENELG HS

Capitol Debate
Columbia Center for Theatrical Arts
E.W. Beck's
Eggspectation
Eyre Bus, Tour & Travel
Glenwood Lions Club
Grassroots Crisis Intervention
Center, Inc.
Green Spring Health Services Inc.
The Horizon Foundation
Howard County General Hospital,
A Member of Johns Hopkins Medicine
Howard County Library,
Glenwood Branch
Identity Promotions LLC
The Council of Elders of the Black
Community of Howard County
Turf Valley Resort

GLENWOOD MS

Eggspectation
The First Tee of Howard County
Gailes' Violin Shop, Inc.
Glenwood Lions Club
Grassroots Crisis Intervention
Center, Inc.
Howard County Library,
Glenwood Branch
Long and Foster Real Estate, Inc.

GORMAN CROSSING ES

Chick-Fil-A, Johns Hopkins Road
Gailes' Violin Shop, Inc.
Howard County Library,
Savage Branch
North Laurel-Savage Multiservice
Center
NSA Mathematics Education Program
Uno Chicago Grill, Columbia Mall

GUILFORD ES

A-OK Mentoring-Tutoring, Inc.
Howard County Library,
East Columbia Branch
Omega Psi Phi Fraternity,
Tau Pi Chapter

HAMMOND ES

Howard County Library,
Savage Branch
Maryland Association for
Environmental and Outdoor
Education, Green School Program
Subway, Guilford Road

HAMMOND HS

Chick-Fil-A, Johns Hopkins Road
Grassroots Crisis Intervention
Center, Inc.
Howard County Education Federal
Credit Union
Howard County General Hospital,
A Member of Johns Hopkins Medicine
Howard County Library, Savage Branch
Subway, Guilford Road

HAMMOND MS

Chesapeake Bay Foundation
Chick-Fil-A, Johns Hopkins Road
Howard County Department of
Recreation and Parks,
Robinson Nature Center
Howard County Library, Savage Branch

HARPER'S CHOICE MS

A-OK Mentoring-Tutoring, Inc.
Autobahn Indoor Speedway, LLC
Columbia Association,
Columbia Athletic Club
Grace Community Church
Harper's Choice Village Center
Howard Community College,
Division of Continuing Education and
Workforce Development
Howard County Department of
Police, Harper's Choice Village Center
Howard County Department of
Recreation and Parks
Howard County General Hospital,
A Member of Johns Hopkins Medicine
Howard County Library, Central Branch
Howard County Local Children's Board
Howard County Office on Aging,
Florence Bain Senior Center
McDonald's, Harpers Farm Road
Safeway, Harpers Farm Road
Uno Chicago Grill, Columbia Mall

HOLLIFIELD STATION ES

Applebee's, Baltimore National Pike
Brunswick Zone Normandy
Howard County Library, Miller Branch
Shoppers Food & Pharmacy
Towson University

HOMWOOD CENTER

The Fudger
Howard County Library, Central Branch
Press Box

PTA Council of Howard County
R:evolution Rhythm
Salazar Catering Services/
Boardroom Café
Subway, Centre Park Drive
Success In Style
Uno Chicago Grill, Columbia Mall

HOWARD HS

Alpha Phi Alpha Fraternity
Capitol Debate
Dance Foundations
Grassroots Crisis Intervention
Center, Inc.
Green Valley Marketplace
The Horizon Foundation
Howard County General Hospital,
A Member of Johns Hopkins Medicine
Howard County Library,
Elkridge Branch
Subway, Centre Park Drive
The Council of Elders of the Black
Community of Howard County

ILCHESTER ES

Green Valley Marketplace
Outback Steakhouse, Long Gate
T-Bonz Grille & Pub
Tip Top Limousine, LLC
Victory Martial Arts

JEFFERS HILL ES

Gailes' Violin Shop, Inc.
Howard County Library,
East Columbia Branch
New Vision Martial Arts
PNC Bank, Elkridge Branch
Schoolhouse Theater Arts, Inc.
Smoothie King, Columbia
Towson University

LAKE ELKHORN MS

A-OK Mentoring-Tutoring, Inc.
Continental Societies, Inc.,
Columbia, Maryland Chapter
Good Life Wellness
Howard Community College,
Center for Service Learning
Howard County Library,
East Columbia Branch
Smoothie King, Columbia

LAUREL WOODS ES

The Church of Jesus Christ of
Latter-Day Saints
Continental Societies, Inc.,
Southeastern Howard/Laurel Chapter
Dollar Plus
Grace Community Church
Howard Community College
Howard County General Hospital,
A Member of Johns Hopkins Medicine
Howard County Library,
Savage Branch
Johns Hopkins University Applied
Physics Laboratory
McDonald's, All Saints Road
North Laurel-Savage Multiservice
Center
UMBC, Education Department
University of Maryland, Home and
Garden Information Center
Wilhide's Unique Flowers & Gifts

LIME KILN MS

American Cichlid Association
Chesapeake Ecology Center
Earth Treks Climbing Center
Grassroots Crisis Intervention
Center, Inc.
Howard County Library,
Central Branch
Maple Lawn Business Association
National Aquarium in Baltimore
Salvere Health and Fitness



Grassroots Crisis Intervention Center, Inc. partners with the school system to provide resources and activities to assist school staff in teaching students about poverty and homelessness in Howard County. Students at all levels learn how they can make a difference through community service and philanthropic programs such as Change Matters, Empty Bowls, Walk-a-Thons and other programs.

School Partners *continued*

LISBON ES

Howard County Library,
Glenwood Branch
McDonald's, Lisbon Center Drive
Pizza Hut, Corporate Office
Pizza Hut, Lisbon Center Drive
Sandy Spring Bank, Lisbon Branch

LONG REACH HS

Alpha Phi Alpha Fraternity
Christopher's Barber Studio
Eggspectation
Head Start, Ellicott City Center
Honeywell Technology Solutions Inc.
The Horizon Foundation
Howard County Education Federal
Credit Union
Howard County General Hospital,
A Member of Johns Hopkins Medicine
Howard County Library,
Elkridge Branch
Hunan Legend
Naval Surface Warfare Center,
Carderock Division
Society of American Military
Engineers, Baltimore Post
The Council of Elders of the Black
Community of Howard County
UMBC Department of Mechanical
Engineering

LONGFELLOW ES

A-OK Mentoring-Tutoring, Inc.
Columbia Association
Good to Go Markets, Freetown Road
Howard County Library,
Central Branch
Rita's, Harpers Choice
Towson University
Uno Chicago Grill, Columbia Mall

MANOR WOODS ES

Howard County Library, Miller Branch
The Pink Cabbage
Sport Clips, Turf Valley
Turf Valley Resort

MARRIOTTS RIDGE HS

Alpha Phi Alpha Fraternity
Glenwood Lions Club
Howard County General Hospital,
A Member of Johns Hopkins Medicine
Howard County Library,
Glenwood Branch
Sport Clips, Turf Valley
The Council of Elders of the Black
Community of Howard County
West Friendship Volunteer Fire
Department

MAYFIELD WOODS MS

Continental Societies, Inc.,
Southeastern Howard/Laurel Chapter
Howard County Library,
Elkridge Branch
Preston Scheffenacker Properties, Inc.

MOUNT VIEW MS

Howard County Library,
Glenwood Branch
Sport Clips, Turf Valley
Turf Valley Resort

MT. HEBRON HS

Capitol Debate
Grassroots Crisis Intervention
Center, Inc.
The Horizon Foundation
Howard Community College,
Division of Continuing Education and
Workforce Development
Howard County Conservancy
Howard County General Hospital,
A Member of Johns Hopkins Medicine
Howard County Library, Miller Branch
Howard County Summer Theatre
McDonald's of Howard County
Salazar Catering Services/
Boardroom Café
Sidney Kimmel Comprehensive
Cancer Center at Johns Hopkins
Willhide's Unique Flowers & Gifts
Y of Central Maryland,
Dancel Family Center

MURRAY HILL MS

Chick-Fil-A, Johns Hopkins Road
Continental Societies, Inc.,
Southeastern Howard/Laurel Chapter
Five Below, Inc.
Grassroots Crisis Intervention
Center, Inc.
Howard County Library,
Savage Branch
Maple Lawn Farms
North Laurel-Savage Multiservice
Center
Silver Diner

NORTHFIELD ES

Baltimore County Savings Bank,
Ellicott City Branch
Brunswick Zone Normandy
Chick-fil-A, Executive Park Drive
Howard County General Hospital,
A Member of Johns Hopkins Medicine
Howard County Library, Miller Branch
NSA Mathematics Education Program
Sport Clips, Turf Valley
Subway, Baltimore National Pike
Uno Chicago Grill, Long Gate

OAKLAND MILLS HS

2HB Software Designs, Inc.
Alpha Phi Alpha Fraternity
BITHGROUP Technologies
British American Auto Care, Inc.
Columbia Center for Theatrical Arts
Conexiones, Inc.
Delta Sigma Theta Sorority, Inc.,
Columbia, Maryland Alumnae Chapter
Howard County General Hospital,
A Member of Johns Hopkins Medicine
Howard County Library,
East Columbia Branch

LG-TEK

Matt Fein & The Fein Properties Team
Smoothie King, Columbia
Subway, Centre Park Drive
Sylvan Learning Center
The Council of Elders of the Black
Community of Howard County
Uno Chicago Grill, Columbia Mall

OAKLAND MILLS MS

Howard County Library,
East Columbia Branch
Oakland Mills Community Association
Okinawan Karate Dojo
Preston Scheffenacker Properties, Inc.
Smoothie King, Columbia

PATAPSCO MS

Bright Minds Foundation
Brunswick Zone Normandy
The Horizon Foundation
Howard County General Hospital,
A Member of Johns Hopkins Medicine
Howard County Library, Miller Branch
Lotte Korean Supermarket
Northrop Grumman Electronic
Systems
Peer2Peer Tutors
The Ulman Cancer Fund for
Young Adults
UMBC, Education Department
Vocelli Pizza
Walter Reed National Military
Medical Center

PATUXENT VALLEY MS

Continental Societies, Inc.,
Southeastern Howard/Laurel Chapter
Giant Food - Supply Chain
Howard County Library,
Savage Branch
North Laurel-Savage Multiservice
Center
Salazar Catering Services/
Boardroom Café

PHELPS LUCK ES

A-OK Mentoring-Tutoring, Inc.
Dunkin' Donuts, Centre Park Drive
Howard County Department of
Recreation and Parks
Howard County Library,
East Columbia Branch
Our Shepherd Lutheran Church
Ready At Five
Subway, Centre Park Drive
Towson University

POINTERS RUN ES

Howard County Library,
Central Branch
New Vision Martial Arts
Uno Chicago Grill, Columbia Mall

RESERVOIR HS

Alpha Phi Alpha Fraternity
Chick-Fil-A, Johns Hopkins Road
Columbia Center for Theatrical Arts
Conexiones, Inc.

Coreworks Fitness Studio,
Maple Lawn
Greenebaum & Rose Associates
Howard County General Hospital,
A Member of Johns Hopkins Medicine
Howard County Library,
Savage Branch
Johns Hopkins University Applied
Physics Laboratory
Looney's Pub
Maple Lawn Business Association
Maryland University of
Integrative Health
North Laurel Community Center
North Laurel-Savage Multiservice
Center

RIVER HILL HS

ASRC Federal Holdings Company
ATK
Bank of America, Ten Oaks Road
Bowles Fluidics Corporation
Charm City Run, Clarksville Pike
Chick-fil-A, Columbia Mall
Chipotle Mexican Grill, Inc.
Credit Union Foundation of Maryland
and the District of Columbia
Dunkin' Donuts, Clarksville Pike
Dunkin' Donuts, Harpers Farm Road
The Gathering Place
Giant Food, Daybreak Circle
Howard County Education Federal
Credit Union
Howard County General Hospital,
A Member of Johns Hopkins Medicine
Howard County Library,
Central Branch
Hyatt & Company
Ledo Pizza, Daybreak Circle
McDonald's, Daybreak Circle
Ourisman Chrysler, Dodge,
Jeep, Ram
Pudgie's Pizza
Rita's, Harpers Choice
River Hill Sports Grille
Roots Market
Ruthie's Deli & Cafe
Subway, Daybreak Circle
The Columbia Bank, River Hill
Twist & Turn Tavern
Walmart, North Ridge Road

ROCKBURN ES

Columbia Center for Theatrical Arts
Green Valley Marketplace
Howard County Department of
Recreation and Parks
Howard County Department of
Recreation and Parks, Rockburn Park
Howard County Library,
Elkridge Branch
NSA Mathematics Education Program
PNC Bank, Elkridge Branch
Victory Martial Arts



Elkridge Landing Middle School students culminated a year spent studying storm water management with a visit to the **Howard County Department of Recreation and Parks' Belmont Manor and Historic Park**, where they built makeshift erosion filters, examined 100-year-old tombstones, and dressed in 19th-century costumes for pictures in front of the almost 300-year-old Belmont Manor House. The **Howard County Conservancy** organized the visit and looks forward to providing a variety of environmental education programs at Belmont.

RUNNING BROOK ES

A-OK Mentoring-Tutoring, Inc.
The Arc of Howard County
Howard Community College
Howard County Department of Police
Howard County General Hospital,
A Member of Johns Hopkins Medicine
Howard County Library,
Central Branch
Magellan Health Services, Inc.
Smoothie King, Columbia
Towson University
Uno Chicago Grill, Columbia Mall
Volunteer, Vivian Bailey

ST. JOHN'S LANE ES

Brunswick Zone Normandy
Grassroots Crisis Intervention Center, Inc.
Howard County Library, Miller Branch
Jump!Zone Columbia
Salazar Catering Services/
Boardroom Café
The Columbia Bank, Gateway Plaza
Turf Valley Resort
Vocelli Pizza

STEVENS FOREST ES

A-OK Mentoring-Tutoring, Inc.
Bridgeway Community Church
FIRN, Inc.
Good Life Wellness
Howard County Library,
East Columbia Branch
Smoothie King, Columbia
The Columbia Bank, Oakland Mills
Victory Martial Arts

SWANSFIELD ES

A-OK Mentoring-Tutoring, Inc.
Blessings in a Backpack
Grace Community Church
Howard Community College,
Center for Service Learning
Howard County Library,
Central Branch
Patient First
Uno Chicago Grill, Columbia Mall

TALBOTT SPRINGS ES

Blessings in a Backpack
Costco Wholesale, Columbia
FIRN, Inc.
Howard County Library,
East Columbia Branch
Oakland Mills Community Association
Parents as Teachers
Preston Scheffenacker Properties, Inc.
Smoothie King, Columbia

THUNDER HILL ES

Abakadoodle
All Time Toys, Inc.
Howard County Library,
East Columbia Branch
Roundhouse Martial Arts
Smoothie King, Columbia
Subway, Centre Park Drive
The Columbia Bank, Oakland Mills
Uno Chicago Grill, Columbia Mall

TRIADELPHIA RIDGE ES

American Fitness Express
Brunswick Zone Normandy
Howard County Library,
Glenwood Branch
New Vision Martial Arts
PNC Bank, Ten Oaks Plaza Branch
Western Howard County Soccer, Inc.

VETERANS ES

Brunswick Zone Normandy
Howard County Library, Miller Branch
Howard County Republican Women
Okinawan Karate Dojo
Shoppers Food & Pharmacy
T-Bonz Grille & Pub
Uno Chicago Grill, Columbia Mall
Veterans of Foreign Wars of the United States, Yingling-Ridgely Post 7472
Y of Central Maryland,
Dancel Family Center

WATERLOO ES

Chick-fil-A, Executive Park Drive
Howard Bank, Headquarters
Howard County Library, Miller Branch
Victory Martial Arts
We Promote Health

WAVERLY ES

Brunswick Zone Normandy
Howard County Library, Miller Branch
Sport Clips, Turf Valley
Towson University
We Promote Health
Wilhide's Unique Flowers & Gifts

WEST FRIENDSHIP ES

Bank of America, Frederick Road
Encore at Turf Valley
Howard County Animal Control & Adoption Center
Howard County Library,
Glenwood Branch
Johns Hopkins Children's Center
Junior Achievement of Central Maryland, Inc.
Kolache Creations
Sport Clips, Turf Valley
Turf Valley Resort
West Friendship Volunteer Fire Department

WILDE LAKE HS

Alpha Phi Alpha Fraternity
Bagel Bin, Wilde Lake
Capitol Debate
Delta Sigma Theta Sorority, Inc.,
Columbia, Maryland Alumnae Chapter
Howard Community College
Howard Community College,
Center for Service Learning
Howard County General Hospital,
A Member of Johns Hopkins Medicine
Howard County Library,
Central Branch
McDonald's, Harpers Farm Road
Safeway, Harpers Farm Road
Sigma Gamma Rho Sorority, Inc.,
Eta Zeta Sigma Chapter
St. John Baptist Church
Uno Chicago Grill, Columbia Mall
Vantage House

WILDE LAKE MS

A-OK Mentoring-Tutoring, Inc.
Alpha Kappa Alpha Sorority, Inc.,
Iota Lambda Omega Chapter
Howard County Library,
Central Branch
National Aquarium in Baltimore
Northrop Grumman Electronic Systems
Uno Chicago Grill, Columbia Mall

WORTHINGTON ES

Brunswick Zone Normandy
Chick-fil-A, Executive Park Drive
Cooks 'N Cakes
Howard County Library, Miller Branch
Okinawan Karate Dojo
One Dish Cuisine
The Columbia Bank, Gateway Plaza

At-Large Partners

At-Large partnerships are systemwide relationships that support the Howard County Public School System's curricular and strategic goals. Many At-Large partners also have individual partnerships with schools of their choice. At-Large partners for the 2013-14 school year were:

A-OK Mentoring-Tutoring, Inc.
African American Community Roundtable
African Art Museum of Maryland
Alpha Phi Alpha Fraternity
American Association for the Advancement of Science
American Heart Association
American Institute of Wine and Food, Baltimore Chapter
Association of Community Services of Howard County
Baltimore Orioles
Baltimore/Washington Corridor Chamber of Commerce
Bright Minds Foundation
Brunswick Columbia Lanes
Brunswick Zone Normandy
The Business Monthly
Candlelight Concert Society
Capitol Debate
Cattail Creek Country Club
Center for Civic Education
Chesapeake Bay Foundation
Chesapeake Bay Trust
Chesapeake Shakespeare Company
Children's National Medical Center
China - Education Committee of Beijing, Chao Yang District
China - Education Committee of Beijing, Dong Cheng District
China - Education Committee of Beijing, Shanghai Minhang District
Chinese Language School of Columbia

Columbia Archives
Columbia Art Center
Columbia Association
The Columbia Orchestra
Columbia Youth and Teen Center
Community Action Council of Howard County, MD, Inc.
Community Foundation of Howard County
Concordia University
Conexiones, Inc.
Counselors Helping (South) Asians/Indians, Inc. (CHAI)
Courtesy on the Road
Custom Media Options
Eggspectation
Fairway Hills Golf Club
FIRN, Inc.
The First Tee of Howard County
Girl Scouts of Central Maryland, Caitlin Dunbar Nature Center
Girls on the Run of Central Maryland
Good Beginnings Child Care and Preschool
Grace Community Church
Grassroots Crisis Intervention Center, Inc.
Green Valley Marketplace
Grow and Learn, LLC
Growth Adventures
HC DrugFree
Head Start of Howard County, Community Action Council
Healthy Howard, Inc.
Hobbit's Glen Golf Club

HoCoPoLitSo (Howard County Poetry and Literature Society)
HopeWorks
The Horizon Foundation
Howard Community College
Howard Community College Educational Foundation
Howard Community College, Arts and Humanities Division
Howard Community College, Children's Learning Center
Howard Community College, Division of Continuing Education and Workforce Development
Howard Community College, Early Childhood Education
Howard Community College, Financial Aid Services
Howard Community College, Science and Technology Division
Howard County Arts Council/
Howard County Center for the Arts
Howard County Autism Society
Howard County Board of Elections
Howard County Bureau of Environmental Services, Recycling Division
Howard County Center of African American Culture, Inc.
Howard County Chamber of Commerce
Howard County Chinese School
Howard County Concert Orchestra
Howard County Conservancy
Howard County Council

Howard County Department of Citizen Services
Howard County Department of County Administration
Howard County Department of Fire and Rescue Services
Howard County Department of Police
Howard County Department of Recreation and Parks
Howard County Department of Recreation and Parks, Robinson Nature Center
Howard County Economic Development Authority
Howard County Family Child Care Association
Howard County General Hospital, A Member of Johns Hopkins Medicine
Howard County Government Department of Planning & Zoning
Howard County Health Department
Howard County Healthy Families, Howard County General Hospital
Howard County Historical Society
Howard County Lacrosse Program
Howard County Library System
Howard County Library, Miller Branch
Howard County Living Farm
Heritage Museum
Howard County Local Children's Board
Howard County Mental Health Authority
Howard County Nutrition and Physical Activity Coalition
Howard County Office of Child Care
Howard County Office of Children's Services
Howard County Office of Children's Services, Child Care Resource Center
Howard County Office of Public Information
Howard County Office of the State's Attorney
Howard County Office of Workforce Development
Howard County Summer Theatre
Howard County Tourism & Promotion
Howard Soil Conservation District
Huaxing Language and Culture Center
Innovations in Education, LLC
The James and Anne Robinson Foundation
Jewish Museum of Maryland
Johns Hopkins University
Johns Hopkins University Applied Physics Laboratory
Johns Hopkins University, Peabody Institute



Maryland MESA provides after-school programs for students to participate in enriching activities and programs in the fields of mathematics, engineering, science, and technology. MESA is a precollege rigorous instructional program that helps prepare students for academic and professional careers. With support from partners, **Maryland Business Roundtable for Education, American Institute of Aeronautics and Astronauts, Baltimore Museum of Industry, The Johns Hopkins University Applied Physics Laboratory, Maryland Science Center, NASA, and the National Aquarium in Baltimore**, MESA also encourages and assists minorities and females in achieving success in STEM fields.

Johns Hopkins University,
Secondary Education Graduate
Program (SIMAT)
Johns Hopkins University,
Whiting School of Engineering
Judy Center at Cradlerock School
Junior Achievement of Central
Maryland, Inc.
Kaplan University
Kaur Foundation
Korea - The Iksan District Office of
Education
Lazarus Foundation
Leadership Howard County
League of Women Voters of
Howard County
Legacy Leadership Environmental
Institute
Lifetouch National School
Studios, Baltimore
Lincoln Technical Institute
Loyola University Maryland,
School of Education
MakingChange
Maryland Business Roundtable for
Education
Maryland Council on Economic
Education
Maryland General Assembly
Maryland Historical Society
Maryland Humanities Council
Maryland MESA
Maryland Piano Service
Maryland Science Center
Maryland SportsCare & Rehab, LLC
Maryland State Archives
McDaniel College
McDonald's of Howard County
McDonald's, All Saints Road
McDonald's, Baltimore National Pike
McDonald's, Benson Drive
McDonald's, Columbia Mall
McDonald's, Cradlerock Way
McDonald's, Daybreak Circle
McDonald's, Dobbin Road
McDonald's, Guilford Road
McDonald's, Harpers Farm Road
McDonald's, Maple Lawn
McDonald's, Montgomery Road
McDonald's, North Ridge Road
McDonald's, Pocomoke Avenue
McDonald's, Snowden River Parkway
McDonald's, Washington Boulevard,
Elkridge
McDonald's, Washington Boulevard,
Jessup
MdBio Foundation and MdBioLab
Mediation & Conflict Resolution
Center (MCRC) at Howard
Community College
MedStar Union Memorial
Orthopaedics and Sports Medicine
Mid-Atlantic Turtle & Tortoise
Society, Inc.
Morgan State University
Music & Arts Center
NAACP, Howard County Branch
National Center for Earth and Space
Science Education
National Commission on Teaching
and America's Future
The National Great Blacks in Wax
Museum
National Security Agency

National University
Naval Surface Warfare Center,
Carderock Division
North Laurel-Savage Multiservice
Center
Northrop Grumman Electronic
Systems
Notre Dame of Maryland University
Olney Theatre Center
Parents as Teachers
Preston Scheffenacker Properties, Inc.
PTA Council of Howard County
Ready At Five
Rotary Club of Clarksville

Rotary Club of Columbia
Rotary Club of Columbia Town Center
Rotary Club of Columbia-Patuxent
Rotary Club of Elkridge
Rotary Club of Ellicott City
Rotary Club of Ellicott City Sunrise
Rotary International, Howard County
Salazar Catering Services/
Boardroom Café
Sheraton Columbia Town
Center Hotel
Shimadzu Scientific Instruments
Smithsonian American Art Museum
Smoothie King, Columbia

Sport Clips, Turf Valley
Stevenson University
Subway, Centre Park Drive
The Columbia Bank, Gateway Plaza
The Council of Elders of the Black
Community of Howard County
The Timbers at Troy
Towson University
Turf Valley Resort
UMBC Center for History Education
UMBC Martha Ross Center for
Oral History
UMBC, Education Department
The United States Army Field Band
United Way of Central Maryland
University of Maryland College of
Education
University of Maryland, Extension,
Howard County
University of Maryland, Extension,
Howard County Master Gardeners
University of Phoenix
Uno Chicago Grill, Columbia Mall
Volunteer Center Serving
Howard County
W. R. Grace & Co.
Walden University
Washington Adventist University
Washington Wizards & Mystics
Youth Basketball
Watson's Tin Box of Ellicott City
Western Howard County Soccer, Inc.
Western Howard County Youth
Baseball/Softball League
Whiteford, Taylor & Preston LLP,
Columbia
Wilhelm Commercial Builders, Inc.
Willow Springs Golf Course
The Young School, Kings Contrivance



For students entering kindergarten, the **Howard County Library System's** class, *Kindergarten, Here We Come*, uses stories and activities to help prepare for that all-important first day, including boarding a real school bus.

Student Services

The Office of Student Services coordinates prevention and intervention programs and services to support students, parents, and schools by addressing the cognitive, behavioral, social, and emotional health and safety needs of all students to maximize achievement. Programs include School Counseling, Pupil Personnel Services, Psychological Services, Health Services, Home Schooling, and Home and Hospital Teaching. The Office of Student Services also coordinates the Connection Center, which links families with community agencies for needed support, and Prepare for Success, a communitywide campaign to provide school supplies for children in need. Partners for 2013-14 included:

Adventist Healthcare
Alpha Kappa Alpha Sorority, Inc.,
Iota Lambda Omega Chapter
Christ Church Link
Community Action Council of
Howard County, MD, Inc.
Community Foundation of
Howard County
Counselors Helping (South) Asians/
Indians, Inc. (CHAI)
Family and Children's Services of
Central Maryland
Grassroots Crisis Intervention
Center, Inc.
Head Start of Howard County,
Community Action Council of
Howard County

Howard County Department of
Social Services
Howard County Health Department
Howard County Mental
Health Authority
Howard County Office of
Children's Services
Integrative Counseling
Judy Center at Cradlerock School
Leadership Howard County
Maryland Department of
Human Resources
Maryland Department of
Juvenile Services
Mediation & Conflict Resolution
Center (MCRC) at Howard
Community College

MSA-The Child & Adolescent Center
NAMI Howard County
Prepare for Success, Community
Action Council of Howard County
PTA Council of Howard County
Rebuilding Together Howard County
Salazar Catering Services/
Boardroom Café
Success In Style
Volunteer Center Serving
Howard County
Way Station, Inc. - Howard County
Zeta Phi Beta Sorority, Inc.,
Lambda Gamma Zeta Chapter

Student, Family, and Community Services

Dedicated community organizations, governmental agencies, and faith-based groups work with the Howard County Public School System's Office of Student, Family, and Community Services to support student achievement. Services provided include tutoring, mentoring, career exploration, and social and cultural experiences. Organizations that partnered with the Office of Student, Family, and Community Services during 2013-14 included:

A-OK Mentoring-Tutoring, Inc.
African American Coalition of Howard County
African American Community Roundtable
AFRO
Alpha Kappa Alpha Sorority, Inc., Iota Lambda Omega Chapter
Alpha Phi Alpha Fraternity
Black Student, Family, and Community Network
Bright Minds Foundation
CBLC at Swansfield Elementary
Columbia Housing Corporation
Conexiones, Inc.
Continental Societies, Inc., Southeastern Howard/Laurel Chapter
Delta Sigma Theta Sorority, Inc., Columbia, Maryland Alumnae Chapter
Education and Career Empowerment Center
FIRN, Inc.
Forest Ridge Apartments
Howard Community College
Howard Community College, Silas Craft Collegians Program
Howard County Department of Police
Howard County Department of Recreation and Parks
Howard County Housing

Howard County Office of Children's Services
Johns Hopkins University Applied Physics Laboratory
The Joint Center for Earth Systems Technology
Junior Achievement of Central Maryland, Inc.
The Links, Incorporated, Columbia, Maryland Chapter
Marathon Kids
Maryland MESA
Maryland University of Integrative Health
Mediation & Conflict Resolution Center (MCRC) at Howard Community College
Monarch Mills Community
Morgan State University
NAACP, Howard County Branch
National Network of Partnership Schools, Johns Hopkins University
Omega Psi Phi Fraternity, Tau Pi Chapter
Rebuilding Together Howard County
Rideout Heath Community
Roger Carter Community Center
Roslyn Rise Community
The Council of Elders of the Black Community of Howard County
University of Maryland, Extension, Howard County



Alicyn DelZoppo, Real Estate Agent for **Long & Foster – The Creig Northrop Team**, interviews a student during the spring 2014 Passport to the Future conference at **Howard Community College**. In partnership with the **Howard County Chamber of Commerce**, HCPSS shares the commitment and responsibility for developing workforce-ready students who plan to pursue a career immediately after high school.

Career Research and Development

Career Research and Development empowers students to create a vision for their future through quality academic coursework, progressive career development, and appropriate work opportunities. After a series of interest, aptitude, and personality assessments, students identify their assets and strengths and apply that knowledge as they investigate careers and college options. Career Research and Development partners for 2013-14 included:

Advisory Council

Ascend One Corporation
British American Auto Care, Inc.
Carrollton Bank, Downtown Baltimore City Branch
Howard Community College, Human Resources Office
Junior Achievement of Central Maryland, Inc.
Lincoln Technical Institute
M&T Bank, Daybreak Circle
Maryland Department of Labor, Licensing and Regulation, Columbia Workforce Center
Spectrum HR Solutions, LLC
Wilhelm Commercial Builders, Inc.
Yolanda Voss Fashion Gallery

Partners

American Pest
Bon Fresco
Books With A Past
Boston Market
Brighton Gardens of Columbia
Brookfield Christian School of Clarksville
Brunswick Columbia Lanes
Carrabba's Italian Grill
Columbia Association
Columbia Association, KidSpace
Columbia Montessori School
Dicks Sporting Goods, Inc.
Domino's Pizza, Baltimore National Pike
Domino's Pizza, Freetown Road
Downtown Locker Room
Earth Treks Climbing Center
Facci Restaurant
First Finish
GameStop
Giant Food, Baltimore National Pike
Giant Food, Center Park Drive
Giant Food, Daybreak Circle
The Goddard School
Great Harvest Bread Co.
Green Valley Marketplace
greeNEWit
Hair Pros of Columbia
Happy Dog Care, Inc.
Harris Teeter, Guilford Road
Hickory Ridge Animal Hospital
Hickory Ridge Grill
High's Dairy Store
Hollister Co.

Howard County Department of Recreation and Parks
Howard County Library, Central Branch
Howard County Library, Glenwood Branch
Howard County Library, Savage Branch
Howard County Office on Aging, Florence Bain Senior Center
Jerry's Subs and Pizza
John Greenan & Sons, Inc. Journeys
Laurel Roller Skating Center
Ledo Pizza, Daybreak Circle
Ledo Pizza, Route 216
Little Stars Learning Centre
Lorien Harmony Hall Assisted Living
McDonald's, Cradlerock Way
McDonald's, Dobbin Road
McDonald's, Harpers Farm Road
McDonald's, Ridgeside Drive
Men on the Move Assisted Living
Nightmare Graphics, Inc.
Orinoco Coffee & Tea, Ltd.
Outback Steakhouse, Long Gate
Papa John's Pizza, Harper's Farm Road
Paradise Day Spa, Tanning & Nail, LLC
Patuxent Square Child Care & Learning Center
Pizza Hut, Clarksville Pike
Red Lobster
Reflections Hair Design
Salazar Catering Services/ Boardroom Café
Service Plus
Shadowland Adventures
Shoe City
Sky Zone Indoor Trampoline Park
Smoothie King, Columbia
Sunrise Assisted Living
Therapeutic & Recreational Riding Center, Inc.
Today's Image
Tropic Nail & Tanning
Valley Logistics
Wagner's Meats, LLC
Wegmans
Wendy's, Clarksville Pike
Western Howard County Youth Baseball/Softball League
Winter Growth, Ruth Keeton House

Career and Technology Education

The Office of Career and Technology Education (CTE) is responsible for the development of courses and curriculum in the areas of business education, career academies, career research and development, computer science, family and consumer science, and technology education. CTE programs integrate the strengths of an academic education with the practical benefits of career and technology education. With the guidance of advisors and industry mentors, students have the unique opportunity to explore a career interest in-depth during high school. CTE partners for the 2013-14 school year included:

Partners

A P Ventures
Academy Ford
ACS Transportation Services
Active Day Adult Daycare
Advanced BioNutrition Corp.
Aida Bistro
AllCare of Maryland
Allen & Shariff Corporation
Alternate Auto & Radiator Service
Ameriprise Financial, Inc.
Applied Information Technologies, Inc.
The Arc of Howard County
Aries Scientific
Ascend One Corporation
Associated General Contractors
Baltimore Gas and Electric Company
Baltimore Metro Chapter of Associated Builders & Contractors
BITHGROUP Technologies
Blue River Construction
Bright Minds Foundation
British American Auto Care, Inc.
Capital Women's Care Howard County
Center of Marine Biotechnology
Central Maryland Rehabilitation Center
CERN, Community Emergency Response Network, Inc.
Chesapeake Physical and Aquatic Therapy
Coldwell Banker Residential Brokerage
The Collaborative Law Group
dw taylor associates, inc.
ECS Mid Atlantic LLC
Ed-U-Care Learning Center
Elkridge Furnace Inn
Encore Homes, Inc.
Essential Family Chiropractic
Expert Trading Limited
Federal Communications Commission
Fisher, Collins, & Carter, Inc.
Gadget Guru
Hancock & Albanese, Inc.
Health South
Hillis-Carnes Engineering Associates, Inc.
Hillmuth Certified Automotive
Hilltop Electric
Hobbit's Glen Golf Club
Honeywell Technology Solutions, Inc.
Howard Community College
Howard County Department of Fire and Rescue Services
Howard County Education Federal Credit Union
Howard County General Hospital, A Member of Johns Hopkins Medicine

Howard County Government, Fleet Maintenance
Howard County Library System
Howard County Office on Aging
J. Vinton Schafer & Sons, Inc.
Jim Coleman Honda
Joel Goodman, D.D.S.
John D. Miller Builders, Inc.
Johns Hopkins Bayview Medical Center
Johns Hopkins Hospital and Health System
Johns Hopkins University Applied Physics Laboratory
Katz, Abosch, Windesheim, Gershman & Freedman, P.A.
Kennedy Krieger Institute
Line of Sight Engineering
Longwood Senior Center
Maritime Applied Physics Corporation
Martek Biosciences Corporation
Maryland Orthodontic Specialists
Matthew R. Horowitz, C.P.A.
Mays and Associates
Meridian Anesthesia
Mimar Architects Inc.
MTH Electric Trains
National CyberWatch Center at PGCC
NeighborCare Pharmacy
OLBN, Inc.
Orthosport Physical Therapy
Owen Brown Senior Center Plus
Parkinson's & Movement Disorders Center of Maryland LLC
Pennoni Associates
Prime Manufacturing Technologies, Inc.
Reedy Electric
Restaurant Association of Maryland Education Foundation
Saini Orthodontics
Saint Agnes Hospital
Science & Technology Corp.
Sheraton Columbia Town Center Hotel
Sidney Kimmel Comprehensive Cancer Center at Johns Hopkins
Sourcefire
Sykesville Car Service
Symmetry First Architects, LLC
Technology Assessment & Transfer, Inc.
The Columbia Bank, Gateway Plaza
Torti Gallas and Partners, Inc.
Transforming Architecture
The Ulman Cancer Fund for Young Adults

UMBC Department of Mechanical Engineering
United States Department of Agriculture
University of Maryland Medical Center
University of Maryland School of Medicine
University of Maryland School of Medicine, Department of Medical and Research Technology
University of Maryland School of Medicine, Department of Neurology
Watermont Pharmacy
Wilhelm Commercial Builders, Inc.
Win Kelly Chevrolet
The Women's Ob-Gyn Group/
Capital Women's Care
Xerox Corporation

Academy of Finance Advisory Council

Aaron Altscher Consulting
Ascend One Corporation
Bright Minds Foundation
Capital One Bank, Clarksville Branch
Davis, Agnor, Rapaport & Skalny, LLC
Franklin College, UK

GEICO, Corporate Headquarters
Howard Bank, Centennial Place Branch
Howard Community College, Business and Computer Systems Division
Howard County Education Federal Credit Union
ING Financial Partners
Johns Hopkins University Applied Physics Laboratory
Junior Achievement of Central Maryland, Inc.
Leadership Howard County
MakingChange
Maryland Council on Economic Education
MassMutual of Greater Washington
Merrill Lynch
Northwest Savings Bank, Waverly Park Branch
RetirementQuest Wealth Management
Sandy Spring Bank, Fulton Branch
Whiteford, Taylor & Preston LLP, Baltimore



Partners of the HCPSS Academy of Finance (AOF), **RetirementQuest Wealth Management; Ascend One Corporation; Junior Achievement of Central Maryland, Inc.; ING Financial Partners; Howard County Education Federal Credit Union; Franklin College, England; and MakingChange**, joined HCPSS and community officials to unveil the NYSE stock ticker at the AOF financial center. The stock ticker promotes a greater depth of knowledge by allowing students to experience live market conditions and understand the transactions and economic statistics behind them. Students observe how different stocks react to market news and how this affects their simulated stock portfolios.

Career and Technology Education *continued*

Architecture Design Advisory Council

Arbaugh Architecture Studio
Banta-Campbell Architects, Inc.
Barwick Interiors
CW Architects, Inc.
Dean Robert Camlin & Associates, Inc.
dw taylor associates, inc.
Morgan State University
OLBN, Inc.
Pro-Built Construction, Inc.
Symmetry First Architects, LLC
Transforming Architecture
University of Maryland School of
Architecture, Planning & Preservation
Waldon Studio Architects &
Planners, P.C.

Automotive Technology Advisory Council

British American Auto Care, Inc.
Community College of
Baltimore County
Ed's Columbia Automotive &
Transmissions
Hillmuth Certified Automotive
Howard County Government,
Fleet Maintenance
Lisbon Citgo Auto Center
Maryland State Department of
Education
Neubauer's Auto Repair
Snap-On Industrial
Town & Country Auto Repair

Biotechnology Advisory Council

Community College of
Baltimore County
Emergent Biosolutions Inc.
Howard Community College,
Science and Technology Division
U.S. Food and Drug Administration
UMBC Department of
Biological Sciences
UMBC Department of Chemistry
and Biochemistry
United States Department of
Agriculture
University of Maryland School
of Medicine, Department of
Microbiology and Immunology
University of Maryland School of
Medicine, Department of Neurology
USB Products

Business Education Advisory Council

Bright Minds Foundation
Howard Community College,
Business and Computer
Systems Division
Howard County Education Federal
Credit Union
Junior Achievement of
Central Maryland, Inc.

Child Development/Teacher Advisory Council

Howard Community College,
Social Sciences/Teacher
Education Division
Howard County Department of
Recreation and Parks
Howard County Library System
Maryland State Department
of Education, Division of Early
Childhood Development
Towson University,
College of Education
University of Maryland College of
Education

Construction Advisory Council

Associated Builders and Contractors,
Baltimore Metropolitan Chapter
Baywood Design/Build Group, Inc.
Community College of
Baltimore County
Eastern Stair Builders
Hancock & Albanese, Inc.
J. Vinton Schafer & Sons, Inc.
North Point Builders, Inc.
U.S. Environmental Protection
Agency, Office of Emergency
Management
Wilhelm Commercial Builders, Inc.

Cyber Security Advisory Council

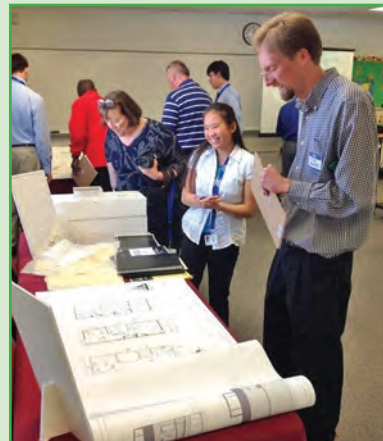
Altamira Technologies Corporation
Bright Minds Foundation
Data Networks
Engineering Solutions, Inc.
Howard Community College,
Science and Technology Division
Johns Hopkins University Applied
Physics Laboratory
Leidos
National CyberWatch Center
NB-Global Consulting, LLC
Towson University Cisco Academy
Support and Training, Center for
Professional Studies

Health and Emergency Technicians Advisory Council

Howard Community College,
Division of Continuing Education and
Workforce Development
Howard Community College,
Health Science Division
Howard County General Hospital,
A Member of Johns Hopkins Medicine
North Laurel 50+ Center
Rotary Club of Ellicott City Sunrise

Homeland Security Advisory Council

Central Maryland Homeland
Security Educational Alliance
Community College of
Baltimore County



After studying the basic principles and methods of design as applied to architecture, Architectural Design Academy students present their designs to industry professionals for review and feedback.

Howard County Department of
Police
Howard County Department of
Technology and Communications
Services
Howard County Office of
Emergency Management
Maryland State Department of
Education
UMBC Department of Emergency
Health Services
United States Department of
Homeland Security,
Computer Emergency Readiness Team

Hospitality Advisory Council

Anne Arundel Community College,
Hospitality, Culinary Arts and
Tourism Institute
Best Western, BWI
Comfort Suites, Columbia Gateway
Elkridge Furnace Inn
Hampton Inn, Columbia
Hilton Garden Inn
Hilton, Columbia
Howard Community College,
Hospitality & Culinary Management
JPB Partners
La Quinta Inn & Suites,
Columbia/Jessup
Marriott Courtyard
Marriott Inn & Conference Center,
UMUC
Maryland Hotel & Lodging
Association
Maryland Office of Tourism
Development
Maryland State Department of
Education
Restaurant Association of Maryland
Education Foundation
The Rumor Mill
Saval Foodservice
Sleep Inn & Suites, Laurel

Springhill Suites, Columbia
Star Hotels
Turf Valley Resort
Volunteer, Ronald Meliker

Project Lead the Way Advisory Council

Bright Minds Foundation
Johns Hopkins University Applied
Physics Laboratory
MIT Lincoln Laboratory
NASA Goddard Space Flight Center
Naval Surface Warfare Center,
Carderock Division
Northrop Grumman Electronic
Systems
SCS Engineers
UMBC, Education Department

Systems and Project Engineering Advisory Council

Axiom Engineering Design
Johns Hopkins University Applied
Physics Laboratory
The TIME Center, CCBC

Visual Communications and Animation Advisory Council

Howard Community College,
Arts and Humanities Division
Howard Community College,
Science and Technology Division
Howard County Library System
Illume Communications
Printing & Graphics Association,
MidAtlantic

Special Education

The Special Education Program provides special education instructional and related services on a countywide basis to address students' unique learning needs, cultivate independence, and promote college and career readiness. The system provides a continuum of services and programs ranging from consultation, specialized instruction for students with Individualized Education Plans, community and family support, job coaching and high school transition programs. Partners for the 2013-14 school year included:

Alcon Laboratories
American Pest
The Baltimore-Washington Conference of The United Methodist Church
Bet Yeladim Preschool and Kindergarten
Bethany Centennial Animal Hospital
Bikram Yoga Columbia
Bon Fresco
Books With A Past
Bridgeway Community Church
Brighton Gardens of Columbia
Brookfield Christian School of Clarksville
Brunswick Columbia Lanes
Brunswick Zone Normandy
BUBBLES
Central Maryland Rehabilitation Center
The Cheesecake Factory
Coho Grill
Columbia Association, Columbia Gym
Columbia Association, Columbia Ice Rink
Columbia Association, Supreme Sports Club
Columbia Center for Theatrical Arts
Columbia Montessori School
David's Natural Market
Dick's Sporting Goods, Inc.
Dogtopia
Dolly's Car Wash
Ed-U-Care Learning Center
Elkridge Athletic Club
Elkridge Family Dentistry
Elkridge Food Pantry
Ellicott City Health & Rehabilitation Center
Ellicott City Senior Center
Exxon, Steven's Forest
The Face Place
First Finish
First Presbyterian Church
Food Lion, Ice Crystal Drive
GameStop
Gary J. Arthur Community Center at Glenwood
Giant Food Pharmacy, Cradlerock Way
Gilchrist Hospice Care
The Goddard School
Grace Episcopal Church
Grandfathers Garden Center and Landscaping
Grassroots Crisis Intervention Center, Inc.
Green Valley Marketplace
Happy Dog Care, Inc.
Head Start, Dasher Green Center
Head Start, Ellicott City Center
Head Start, Old Cedar Lane
Hilltop Child Care Center
Historic Savage Mill

Howard Community College
Howard County Animal Control & Adoption Center
Howard County Autism Society
Howard County Conservancy
Howard County Department of Recreation and Parks
Howard County Education Association Office
Howard County Food Bank, Community Action Council of Howard County
Howard County General Hospital, A Member of Johns Hopkins Medicine
Howard County Government, Mailroom
Howard County Government, Fleet Maintenance
Howard County Library System
Howard County Library, Central Branch
Howard County Library, East Columbia Branch
Howard County Library, Glenwood Branch
Howard County Library, Miller Branch
Howard County Library, Savage Branch
Howard County Office on Aging
Howard County Office on Aging, Florence Bain Senior Center
Ivy Creek Stables
JC Penney
Jiffy Lube, Clarksville Square Drive
Johns Hopkins University Applied Physics Laboratory
Kendall Hardware
Kid's Time Out Drop-In Child Care
Kinetics Dance Theatre
Kohl's Department Store
La Prima Catering
Laurel Regional Hospital
Ledo Pizza, Route 216
Life Time Fitness, Inc.
Lighthouse Senior Living
Linwood Center Boutique
Linwood Center, Inc.
Little Lighthouse Daycare
Looney's Pub
Lorien Harmony Hall Assisted Living
Lornwood Day Care & Gifted Center
Loyola Clinical Centers
Maple Lawn Community Center
Marilyn J. Praisner Community Recreation Center
Marilyn J. Praisner Library
MarTar Swim School, LLC
Maryland Piano Service
McDonald's, Maple Lawn
Morningside House of Ellicott City
Mosaic Christian Church
Neighbor Ride, Inc.

New York J&P Pizza, Ice Crystal Drive
Nightmare Graphics, Inc.
North Laurel Community Center
North Laurel Senior Center Plus
North Laurel-Savage Multiservice Center
On the Border, LLC
Origins
Patapsco Valley Veterinary Hospital
PETCO, Baltimore National Pike
PETCO, Old Columbia Pike
Pets on Wheels
Raytheon Solipsys
River Hill Garden Center
Roger Carter Community Center
Salazar Catering Services/Boardroom Café
Sims Recycling Solutions
Soccer Association of Columbia
Somerford Place Alzheimer's Assisted Living Columbia

Southern States
St. John Baptist Church
St. Louis Parish
Studio Dans
Subway, Minstrel Way
Success In Style
Sunrise Assisted Living
Tasty Shirt Factory
Techlab Photo & Digital Imaging
Town Center Community Association
Vantage House
Volleyball House
Wegmans
Weis Markets, All Saints Road
Weis Markets, Birmingham Way
Weis Markets, Washington Boulevard
Winter Growth, Ruth Keeton House
Y of Central Maryland, Dancel Family Center
Zenyon, Inc.



Fidos for Freedom, Inc. pairs Cedar Lane students with trained therapy dogs and their volunteer handlers during visits to the school. The interactions help students with disabilities develop socialization, communication, sensory, and mobility skills during 15 minute sessions.

In a separate program, Fidos also works with HCPSS and the **Howard County Library System** to improve the reading comprehension, vocabulary, and confidence of struggling third grade students through DEAR (Dogs Educating and Assisting Readers). The Fidos dogs provide an atmosphere of unconditional acceptance. By the end of the program, students are reading at or above the third grade reading level.

Gifted and Talented Program

The Gifted and Talented Program provides accelerated and enriched learning opportunities to students showing exceptional ability or interest in advanced-level studies. Gifted and Talented resource teachers at the elementary and middle school level enhance the standard curriculum and provide specialized services to develop students' unique talents and aptitudes. At the high school level, intern/mentor opportunities provide a formal, site-based, academic relationship between a high school student and a professional. In this structured relationship, mentors guide students in the pursuit of knowledge and scholarly research. Program partners for the 2013-14 school year included:

Advanced Fluidics LLC
AllCare of Maryland
American Film Institute
American Red Cross
Amos & Muffoletto, LLC
Amos Medical Services
Angel Dental Care
Arabesque Dance Studio
ARIUMae
ARM Group Inc.
Arthritis Care Specialists of Maryland
Aruna V. Khurana, MD
Best Buddies Maryland
Bethany Centennial Animal Hospital
Boliwalou
Business & Technology Law Group
Capitol Debate
Cat & Dog Hospital of Columbia
The Catholic University of America
Chesapeake Oncology Hematology Associates, P.A.
Columbia Association
Columbia Horse Center, Inc.
Countryside Veterinary Clinic
CVS Pharmacy, Centennial Lane
Damon Foreman Music Academy
The Dance Dimension
Desai Dental
Doug Kapustin Photography
Edwin Zaghi, DMD PC
Elkridge Animal Hospital
The Ember Cast, Inc.
Enterprise Community Investment, Inc.
Epoch Counseling Center
Erickson Living

FIRN, Inc.
Fit For Life Training
G3 Technologies, Inc.
Garbis Dental Associates
Grace Community Church
Greenbelt Rehab
The Greene Law Firm, LLC
greeNEWit
Hickory Ridge Animal Hospital
Hope Counseling Center
HopeWorks
The Horizon Foundation
Howard Community College
Howard Community College,
Science and Technology Division
Howard County Council
Howard County Department of
Fire and Rescue Services
Howard County General Hospital,
A Member of Johns Hopkins Medicine
Howard County Historical Society
Howard County Office of
Emergency Management
Howard County Office of the
State's Attorney
Johns Hopkins Bayview Medical
Center, Heart and Vascular Institute
Johns Hopkins Children's Center
Johns Hopkins Hospital and
Health System
Johns Hopkins Hospital and Health
System, Child and Adolescent Psychiatry
Johns Hopkins Hospital and Health
System, Department of Anesthesiology

Johns Hopkins Hospital and
Health System, Department of
Gynecology and Obstetrics
Johns Hopkins Hospital and
Health System, Pharmacology and
Molecular Sciences
Johns Hopkins University Applied
Physics Laboratory
Johns Hopkins University Applied
Physics Laboratory,
Montpelier Campus
Johns Hopkins University School of
Medicine
Johns Hopkins University,
Bloomberg School of Public Health
Kenneth M. Klebanow, MD &
Associates P.A.
Kids Super Smile
Kit and Kaboodle Productions
Laboratory Corporation of America
Laurel Children's Clinic
The Law Offices of Ali Kalarestaghi,
LLC
Law Offices of Allen J. Kruger, P.A.
Leidos
MakingChange
Maryland SPCA
Mastracci Law Offices
Mays and Associates
Mediation & Conflict Resolution
Center (MCRC) at Howard
Community College
MedStar Union Memorial Hospital
Merriweather Post Pavilion
Metropolitan Cardiovascular
Consultants
Mt. Airy Animal Hospital
Mt. Airy Children's Dental Associates
NASDAQ OMX
National Institutes of Health
National Institutes of Health,
National Cancer Institute
National Institutes of Health,
National Institute on Aging
National Institutes of Standards and
Technology
NeighborCare Pharmacy
North Laurel Animal Hospital
Northwest Hospital
Pam Long Photography
Parkinson's & Movement Disorders
Center of Maryland LLC
Parmar Family & Cosmetic Dentistry
Pediatric Partners
PerkinElmer, Inc.
Physicians Eye Care and Laser Center,
Columbia Medical Center
Physiotherapy Associates
Potomac Valley Orthopedic
Associates

Primary Pediatrics
Private Digital Network Services
Proove Biosciences, Inc.
Racktop Systems
ReStl Designers, Inc.
Revive Physical Therapy
Ridgeview Veterinary Practice
Rocky Gorge Animal Hospital
Resort and Spa
Rose Walk, LLC
Ruth N Agwuna, M.D.
Select Eye Care
Sinai Hospital
Sivieri Wellness Center
Sport and Family Physical Therapy
St. Louis Parish
State of Maryland, Howard County
Office of the Public Defender
Taylorsville Veterinary Clinic
Telefactor Robotics LLC
THERAPEARL
Therapeutic & Recreational
Riding Center, Inc.
Transforming Architecture
Triadelphia Veterinary Clinic
Trivita
U.S. Army Research Laboratory
UAV Solutions, Inc.
UMBC
UMBC Athletics
Uniformed Services University of the
Health Sciences
United States Department of
Agriculture, Agricultural
Research Service
United States Department of
Veterans Affairs, Rehabilitation
Research & Development
University of Maryland Department
of Intercollegiate Athletics
University of Maryland
Medical Center
University of Maryland
Rehabilitation & Orthopaedic Institute
University of Maryland School of
Medicine, Department of Neurology
University of Maryland School of
Medicine, Department of Psychiatry
University of Maryland,
Orthopedics and Sports Medicine
USGS Patuxent Wildlife Research
Center
Varsity Sports Network
Westminster Police Department
World Trade Center Institute



As part of the Gifted & Talented Intern/Mentor Program, a Mt. Hebron High School student interned with the Neonatal Intensive Care Unit at Howard County General Hospital, A Member of Johns Hopkins Medicine, researching parental bonding for children.

Staff Discount Program

The Staff Discount Program is a benefit provided by local businesses to recognize the commitment and dedication of all HCPSS employees by providing discounts or other special offers for their products or services. This program helps the Howard County Public Schools' Human Resources Office attract and retain the best educational staff available. Businesses that participated in 2013-14 included:

39 Minute Workout
A Plus Carpet and Flooring
A&G Management Company, Inc.
Absolute Security of America
Ace Relocation Systems, Inc.
Alarm Services of Maryland
All Time Toys, Inc.
Alliance Capital Management, LLC
Allied Service Company
American Pest
Antares Musicians
Apple Inc.
AT&T Mobility
Axis Sport Performance Training
Azul 17 Mexican Cuisine and Tequila Lounge
Baltimore Orioles
BB&T
The Body Image Therapy Center
Body Shapers, LTD
BodyWise Physical Therapy and Wellness
Boliwalou
The Boot Camp Girl
Brian T. Donoughe, Notary Public
Brian T. Donoughe, Ordained Minister
Brick Bodies and Lynne Brick's Health and Fitness Facilities
Brick Bodies Fitness Services, Padonia
Bring it! Fitness LLC
Camp Bow Wow
Cavallaro & Co.
Christopher's Barber Studio
Club Pooche
Clyde's of Columbia
Coldwell Banker Residential Brokerage
College Personalized Aid Services
Columbia Association
Columbia Jazzercise Fitness Center
Connect Your Home
Coreworks Fitness Studio, Columbia
Corporate Shopping Company
Countryside Cabinetry LLC
CQI Associates, LLC - MD
Residential Energy Co-op
Crafton Dental Suite
CruiseOne
Curves, Howard County
Cutie Patooties
The Cycle Mill
Daedalus Books Warehouse Outlet
Dakota Salon
Dell
Direct Mortgage Loans
Domino Fitness
Dorsey Ridge Apartment Homes
EarQ Family Hearing Aid Discount Plan
Edible Arrangements, Columbia
Edible Arrangements, Ellicott City
Edible Arrangements, Laurel
Electra Entertainment
Elite Nails
Enchanted Parties
Equity Mortgage Lending
Erie Insurance Group
The Face Place
Fairway Hills Golf Club
Farashe the Day Spa
Feet First Sports
Finesse in Training
First Financial Group
Fish Window Cleaning
Fit to You, LLC
Fitness 19
Fitness Together
Gift Tree
Giftblooms
Gold's Gym
Great Oak Lending
Great Sage
Greenberries Company
greeNEWit
Ground Control
GSF Mortgage Group
Harper's Farm BP
Hartford Computer Group, Inc.
Homes for Heroes
Homework Helpers and Tutors
Inside Out Performance, LLC
Integrated Financial Solutions, LLC
Island Club Apartments
J. Jill
JAMAR Personalized Services
Jim Coleman Honda
JK Moving & Storage
Jump!Zone Columbia
KG Title, Inc.
Krause Companies
Krav Maga Maryland, LLC
Landscaping by Alfredo
The Law Office of Brett M. Dieck, LLC
Level Zin
Liberty Mutual Group
Liberty Tax Service
Lightning Property Services, LLC
Linda's Bakery
Little Hands Cookie Co.
Longaberger (Independent Consultant)
Longevity Medical Spa
LV Creative Designs
M&T Bank, Daybreak Circle
Marriottsville Acupuncture
Maryland University of Integrative Health
Massage Envy Spa, Clarksville
Massage Envy Spa, Columbia
Maximum Fitness
Medifast
Mercer Carpet One Floor and Home
Microsoft via Bell Techlogix
Morgan Stanley Smith Barney
Mosquito Joe of Baltimore
Move and Change
MUSA Tae Kwon Do
My Gym Children's Fitness Center
My Pet Store and More
National Fidelity Mortgage
Nationwide Insurance Company
New York Life Insurance Company

Noonan Construction
One For All Dance Academy
Pamela Sabtiuk, Massage
The Pampered Chef
Peer2Peer Tutors
Physicians Weight Loss Centers
Plancorr Wealth Management
Presidential Bank, Columbia
Primary Residential Mortgage, Inc.
Prospect Mortgage, LLC
Provident Funding
Pump It Up of ElkrIDGE
Quest Fitness
R.E. Shilow Realty Investors
Reda's Mobile Detailing
Reisman Video Productions
REO Choice Realty
RetirementQuest Wealth Management
Retro-Spect, LLC Home Inspections
Rocky Mountain High Financial Service
Royal Air Flight Training Inc.
Salazar Catering Services/Boardroom Café
Salon Marielle
Salon Tusey
Salvere Health and Fitness
Sandy Spring Bank, Columbia Branch
Sandy Spring Bank, Fulton Branch
Save On Real Estate.Net
The Scholar Athlete Academy
Second Chance Saloon
Shell Car Care Center, Columbia
Shell Car Care Center, Dorsey Hall
Sherwood Crossing Apartments
Skin Therapy Center, LLC
Soloman System's Technologies
Sport Clips, Turf Valley
Sprint
Sprint, Employee Value Program
Stonehaven Apartments
Stubnow.com
Subway, Baltimore National Pike
Subway, Catonsville
Subway, Centre Park Drive
Subway, Marley Station Mall
Synergy Women's Fitness
T-Bonz Grille & Pub
Team Irving Fitness
Thumbs Up Party Planning, Inc.
Tocar Spa
The Tomato Palace
Top Level Events, LLC
Total Image Services
Twist & Turn Tavern
Two Eagles Lodge
Union Jack's British Pub
United Dominion Realty Trust - Ellicott Grove Apartments
Uno Chicago Grill, Columbia Mall
Verizon, Employee Value Program
The Vertical Connection Carpet One
Vince's Tasty Creations
Vintage Red Barn
Wachovia Bank, Catonsville Branch
Weichert Realtors, New Colony
Weight Watchers International, Inc.
Wellington Interiors
Wells Fargo Home Mortgage
Wessel's Florist and Weddings
Whirlz Yogurt Bar & Crepes
You May Kiss the Bride
Zapata's Restaurant & Bar

Health and Wellness

HCPSS offers all employees the opportunity to participate in a comprehensive wellness program, Commit To Be Fit. The program is designed to reduce the demand for health care services through long-term behavior change. HCPSS Benefits staff and the Employee Wellness Council work with community partners and others to offer a systemwide wellness program that includes monthly health and financial educational sessions, online health assessments and wellness initiatives, and fitness classes. Partners for 2013-14 included:

39 Minute Workout
American Heart Association
American Red Cross
The Boot Camp Girl
Bring it! Fitness LLC
Columbia Association
Coreworks Fitness Studio, Columbia
Girls on the Run of Central Maryland

Healthy Howard, Inc.
Howard County Office on Aging
MakingChange
Maryland University of Integrative Health
Morrison Chiropractic, P.A.
Salvere Health and Fitness

Volunteer Opportunities with HCPSS

Single Day Commitment, 2014-2015

| VOLUNTEERS NEEDED FOR: | WHEN: | WHERE: | HCPSS CONTACT: |
|--|--|---|---|
| JUNIOR INTERVIEWERS Every HCPSS junior develops a resume and participates in a 20-30 minute interview to fulfill World of Work graduation requirements. Throughout the year, Guidance Counselors and English Teachers assist students with career preparation skills, including resume writing, professional dress and manners, as well as interviewing strategies. Each high school guidance office coordinates many community volunteers to conduct the interviews. | January through March 3 hours; scheduled per school | High schools throughout county; schedule to be determined | High School Guidance Office www.hcpss.org/schools/high-schools |
| Countywide STEM EXPO - JUDGES The HCPSS STEM Expo promotes student engagement and learning in science, technology, engineering, and mathematics through the display and presentation of student projects. Students from the county's middle and high schools participate. The HCPSS needs more than 150 qualified community volunteers to review and evaluate student work. Each volunteer will be assigned 8-10 student projects for review. Each volunteer will also interview students about their work. HCPSS provides a briefing before the event to prepare reviewers. | To be determined | To be determined | Secondary Science Mary Drew 410-313-6615 mary_drew@hcpss.org |
| BLACK SAGA COMPETITION The Black Saga Competition is an exciting, fun-filled forum for students (Grades 6-8) to learn about the experiences of African Americans in the United States. School teams of up to three students each compete by studying the answers to more than 800 questions about the African American experience. HCPSS seeks volunteers to assist us in running the countywide competition. | Saturday, February 21 8 a.m.-1 p.m. | Homewood Center | Secondary Social Studies Mark Stout 410-313-6622 mark_stout@hcpss.org |
| PASSPORT TO THE FUTURE - INTERVIEWERS Through the Passport to the Future partnership, the Howard County Chamber of Commerce and the HCPSS share the commitment and responsibility for developing workforce-ready students who plan to pursue a career immediately after high school. Students earning Passport to the Future certification have mastered the skills necessary to be successful in work and career related experiences. One of the final requirements of the Passport program is successfully completing an "employment-like" interview. In addition to the Chamber volunteers, the HCPSS seeks local professionals to interview Passport students. | Friday, March 6 | Howard Community College | Career Research and Development Laurie Collins 410-313-7480 laurie_collins@hcpss.org |
| Countywide HISTORY DAY - JUDGES The HCPSS annual History Day competition promotes the study of history while providing students a forum to compete for excellence in one of several categories: documentary, performance, exhibit, web page, and historical paper. Business and community members judge the competition by reviewing and evaluating student work based on criteria set by the national History Day Commission. Judging assignments will be mailed to participants with instructions and other details approximately one week prior to the competition. | Saturday, March 14 8 a.m.-3 p.m. snow date Saturday, March 21 | Reservoir HS | Secondary Social Studies Kelly Reichardt 410-313-6622 kelly_reichardt@hcpss.org |
| MESA DAY - JUDGES Small teams of judges assess student competitions in bridge building, trebuchet, communications, and other events against a set of defined parameters. The Maryland MESA (mathematics, engineering and science achievement) program prepares students for academic and professional careers in mathematics, engineering, science and technology. | Regional Competition Friday, April 10 | Johns Hopkins Applied Physics Lab | Diane Martin Community Outreach and Engagement 410-313-5673 diane_martin@hcpss.org |
| SIMULATED CONGRESSIONAL HEARINGS - COACHES and JUDGES The simulated congressional hearing is the culminating activity of a HCPSS 5th grade curricular program - "We the People: The Citizen and the Constitution." Students play the role of constitutional experts and demonstrate their new-found knowledge and understanding of the United States Constitution and the Bill of Rights by presenting prepared oral statements before a panel of judges. Coaches help students locate resources, synthesize information, develop a speech and prepare for follow-up questions. Judges are community leaders who listen to the students testify, ask follow-up questions and provide valuable feedback. | May and June | Elementary schools throughout county | Elementary Social Studies Kim Eggborn 410-313-5678 kimberly_eggborn@hcpss.org |

Volunteer Opportunities with HCPSS

Multiple Day Commitment

| VOLUNTEERS NEEDED FOR: | HCPSS CONTACT: |
|--|--|
| BRIDGES OVER HOWARD COUNTY Community learning centers at 18 schools (Title I, or schools with many low income families) provide students with academic enrichment opportunities and additional services to both students and families. | Marty Cifrese Program Manager 410-313-7185 marty_cifrese@hcpss.org |
| MARYLAND MESA (MATHEMATICS, ENGINEERING AND SCIENCE ACHIEVEMENT) PROGRAM MESA clubs prepare students for academic and professional careers in mathematics, engineering, science and technology. Special emphasis: to attract minority and female students who are traditionally underrepresented in MESA fields. | Diane Martin Community Outreach and Engagement 410-313-5673 diane_martin@hcpss.org |
| ACADEMIC INTERVENTION PROGRAMS Programs offered before, during, and after school hours, and on Saturdays include direct instruction and homework assistance to accelerate student achievement in mathematics, reading, and other core subject areas. Enrichment activities expand students' experiences and perceptions. | Academic Intervention Office 410-313-6762 |
| BLACK STUDENT ACHIEVEMENT PROGRAM Provides academic assistance and/or social support for students in mathematics and/or reading, while encouraging and motivating them toward higher levels of academic achievement. Adult volunteers assist students with school assignments, tests, organization and study skills, graphing calculator applications, chess, and much more. | Patricia Branner-Pierce Elementary BSAP Specialist 410-313-6771 patricia_branner-pierce@hcpss.org Vera Wilkins, Secondary BSAP Specialist 410-313-6804 vera_wilkins@hcpss.org |

Advisory Committee Contacts

| | | |
|--|----------------------------|--------------|
| Community Advisory Council to the BOE | Chief of Staff office..... | 410-313-6814 |
| Operating Budget Review Committee..... | Beverly Davis..... | 410-313-1530 |
| Textbook Selection Committee | Curriculum Coordinator | |
| Academic Calendar Committee | Caryn Lasser | 410-313-1270 |
| Attendance Area Committee | Joel Gallihue..... | 410-313-7184 |
| Instructional Materials Criteria and Review Committee | Zeleana Morris | 410-313-6623 |
| School Planning Committee..... | Bruce Gist | 410-313-6798 |
| School Naming Committee | Frank Eastham..... | 410-313-1274 |
| Student Walking Route Committee..... | David Ramsay | 410-313-6728 |
| School Health Council..... | Health Services | 410-313-6637 |
| Policy Review Committees..... | Fran Albert..... | 410-313-6870 |
| Superintendent's Cultural Proficiency and Equity Advisory Council..... | John Krownapple | 410-313-1560 |
| | Becky Salerno | 410-313-6654 |
| School Improvement Teams..... | School Principal | |

Subject Area/Program Advisory Committees

| | | |
|---|---------------------------|--------------|
| Bridges Over Howard County | Marty Cifrese | 410-313-7185 |
| Career Academy Clusters | Natalie Belcher | 410-313-6636 |
| Elementary Curriculum | Caroline Walker | 410-313-1538 |
| English | Zeleana Morris | 410-313-6623 |
| Gifted and Talented | Debbie Blum | 410-313-6670 |
| Interscholastic Athletics | John E. Davis | 410-313-6630 |
| Instructional Technology..... | Julie Alonso-Hughes | 410-313-7141 |
| Library Media..... | Carol Fritts..... | 410-313-7179 |
| Mathematics..... | William Barnes | 410-313-6635 |
| Fine Arts | Gino Molfino..... | 410-313-6634 |
| Project Lead the Way (Engineering) | Sharon Kramer | 410-313-6797 |
| Science..... | Mary Weller | 410-313-6616 |
| Social Studies..... | Mark Stout | 410-313-6632 |
| Special Education Citizens Advisory | Patty Daley | 410-313-6656 |
| Student Services Advisory | Patty Daley | 410-313-6656 |
| Technology Office..... | Michael Borkoski..... | 410-313-5332 |
| World Languages..... | Leslie Grahn | 410-313-7485 |



Partnerships Office

10910 Clarksville Pike, Ellicott City, MD 21042
410-313-6655

www.hcpss.org/about-us/partnerships/
partnerships@hcpss.org

For more info on HCPSS Partnerships, go to:

