



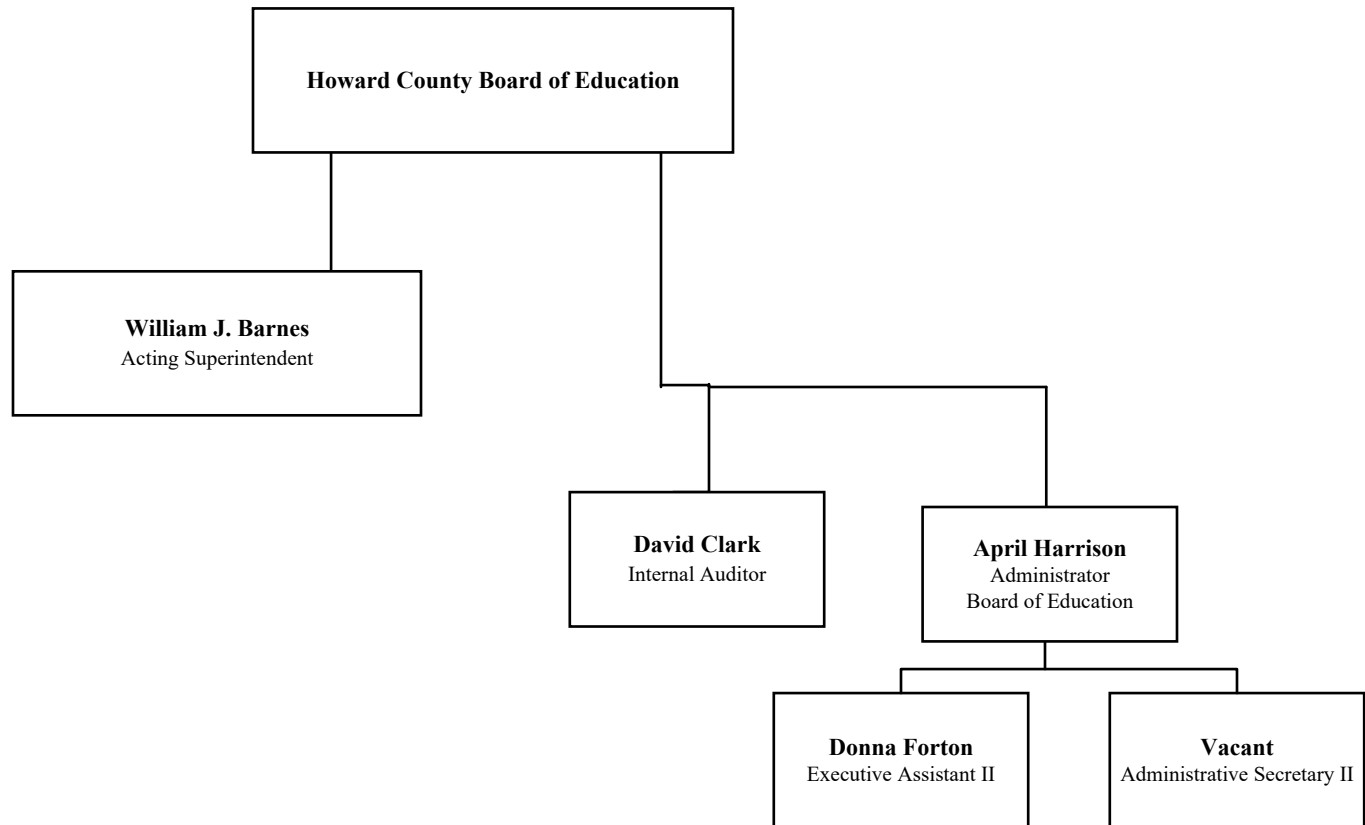
Organizational Charts

Board of Education	1
Superintendent	2
General Counsel	3
Deputy Superintendent	4
Information Technology	5
Division of Human Resources and Professional Development	6
Human Resources	7
Diversity, Equity, and Inclusion.....	8
Benefits.....	9
Professional Development.....	10
Division of School Management and Instructional Leadership	11
Division of Academics	12
Curriculum, Instruction, and Assessment.....	13, 14
Program Innovation and Student Well-Being.....	15, 16
Special Education	17, 18
Division of Administration.....	19
Budget and Finance	20
Transportation	21
Division of Operations.....	22
Food and Nutrition Services.....	23
Capital Planning and Construction.....	24
School Facilities.....	25
Purchasing	26
Safety and Security	27

February 12, 2024

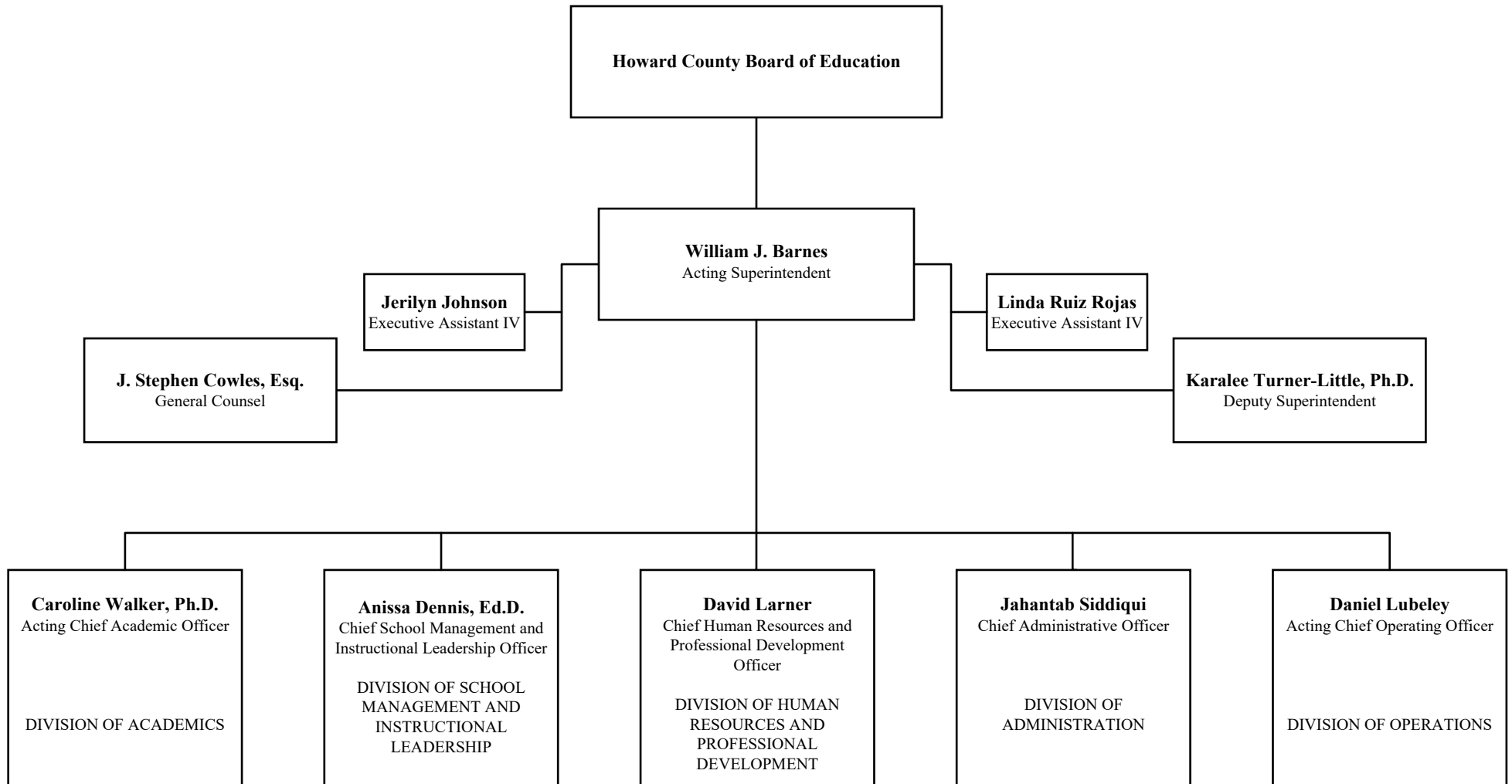
THE FIERCE URGENCY OF NOW:
EDUCATING EVERY STUDENT THROUGH THE LENS OF EQUITY

“WORK HARD AND BE KIND”

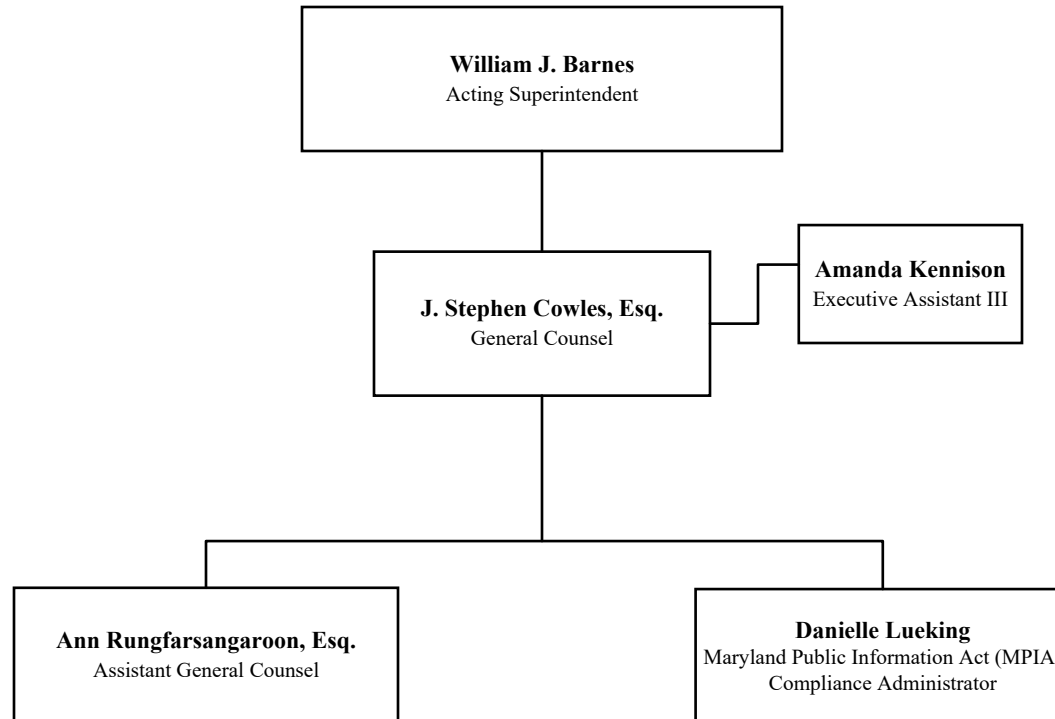


THE FIERCE URGENCY OF NOW:
EDUCATING EVERY STUDENT THROUGH THE LENS OF EQUITY

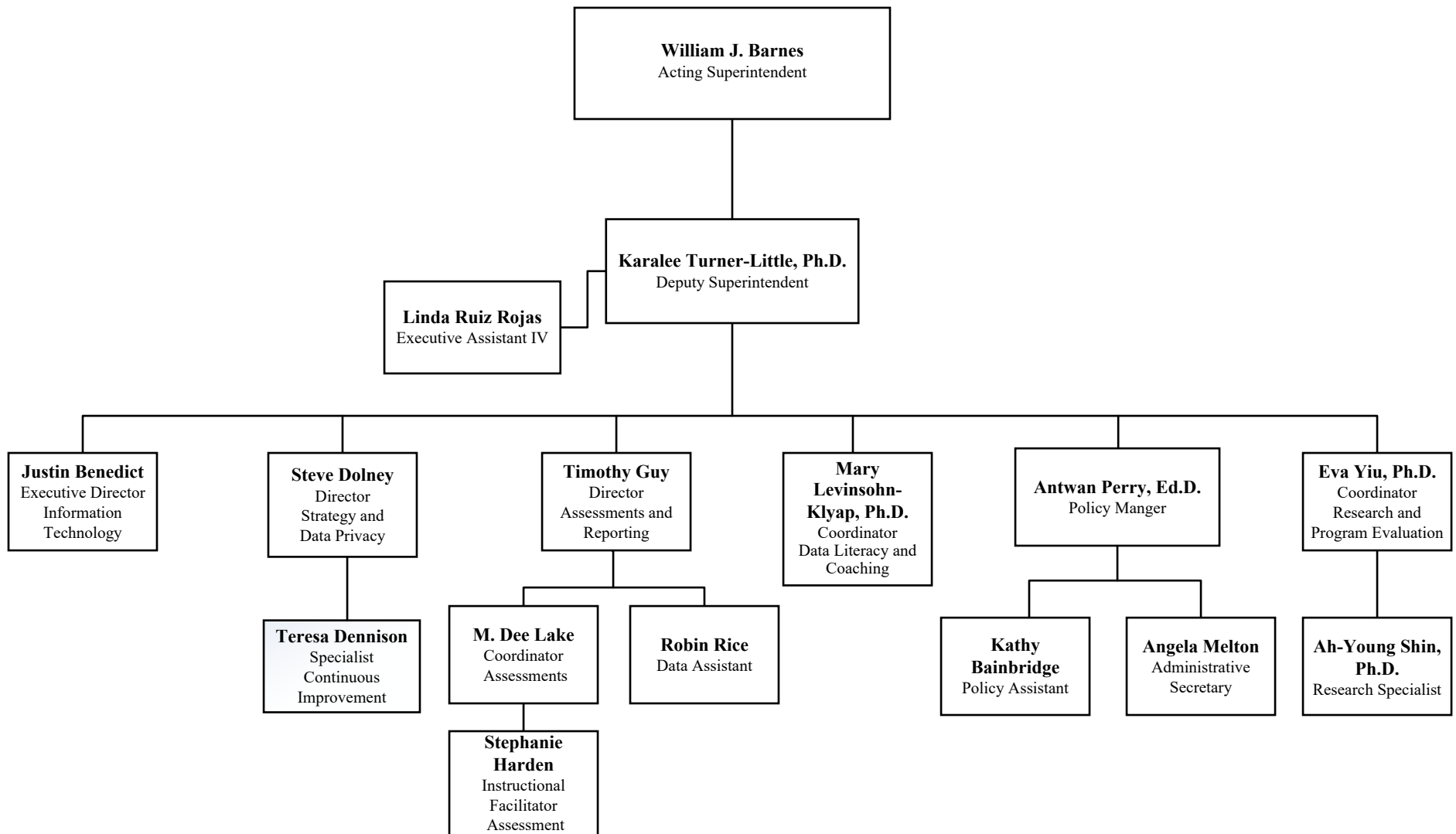
“WORK HARD AND BE KIND”



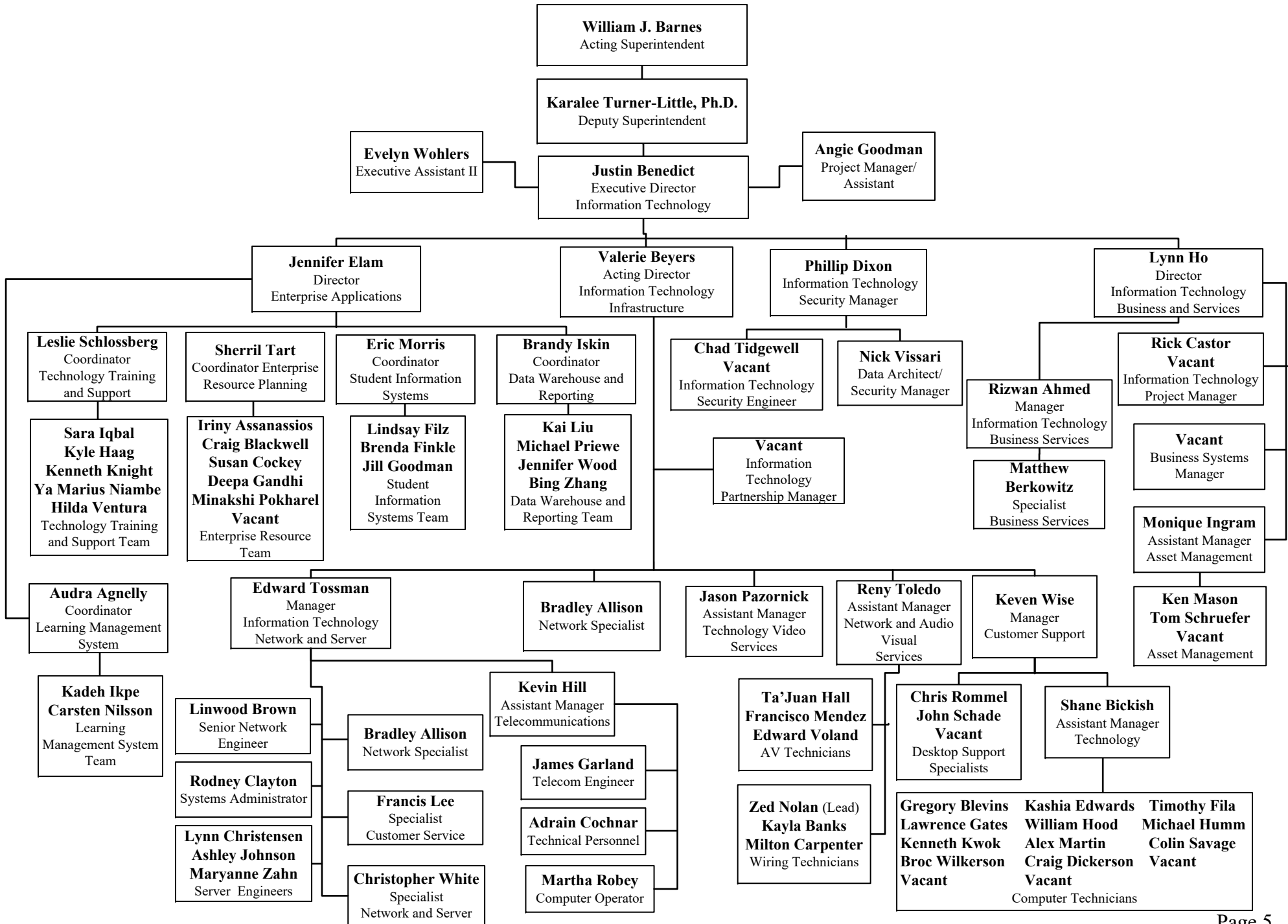
Office of the General Counsel



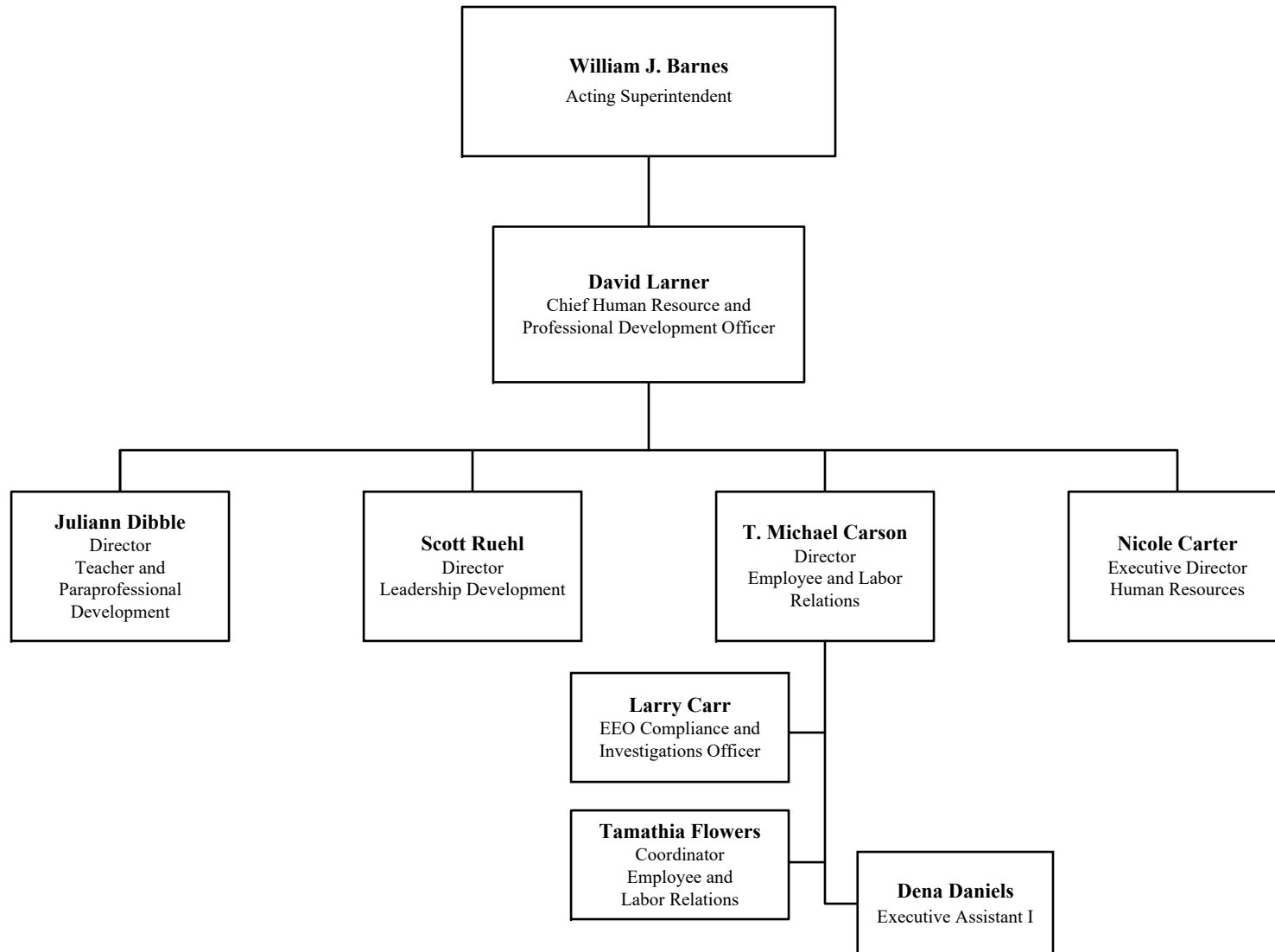
Office of the Deputy Superintendent



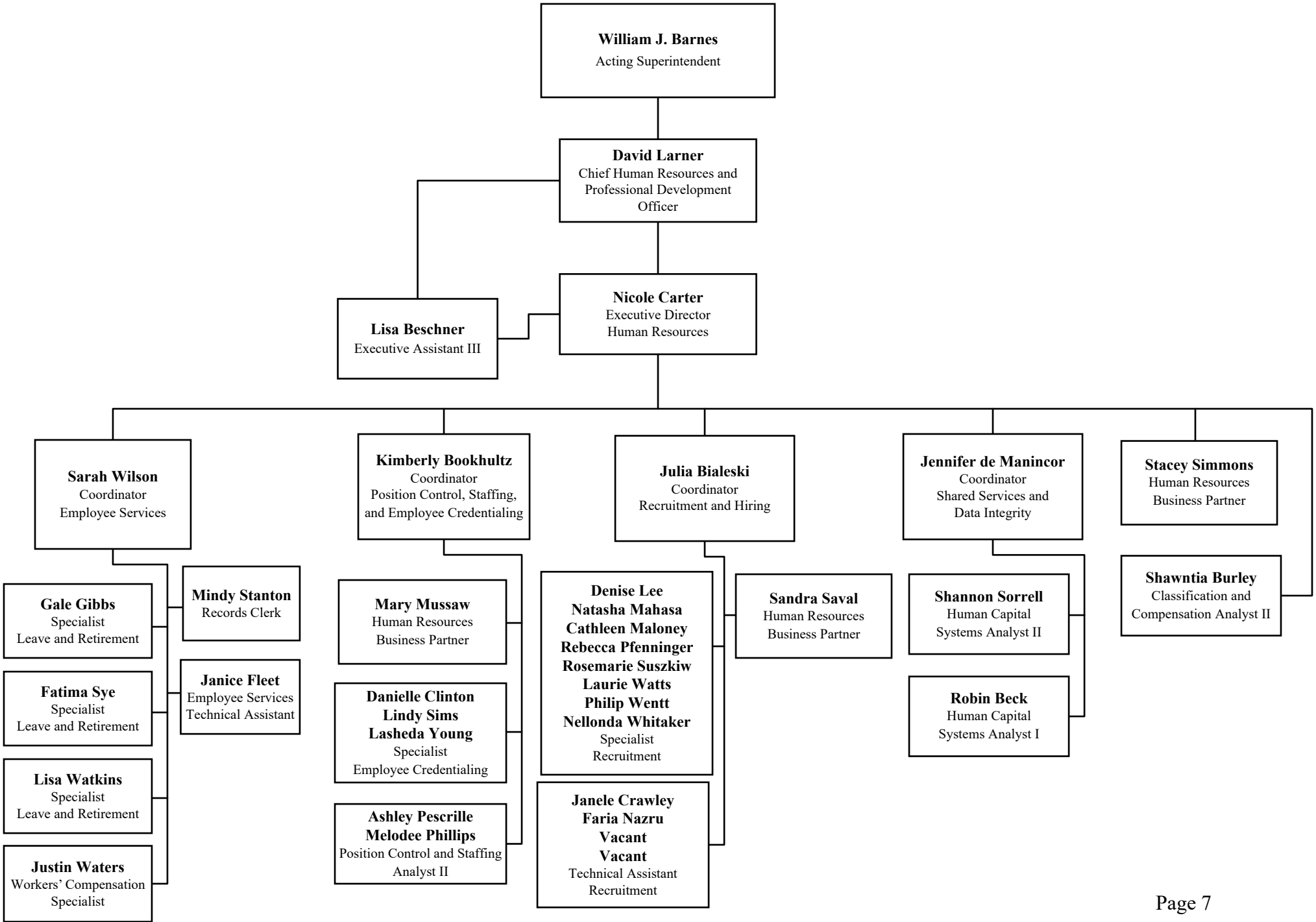
Department of Information Technology



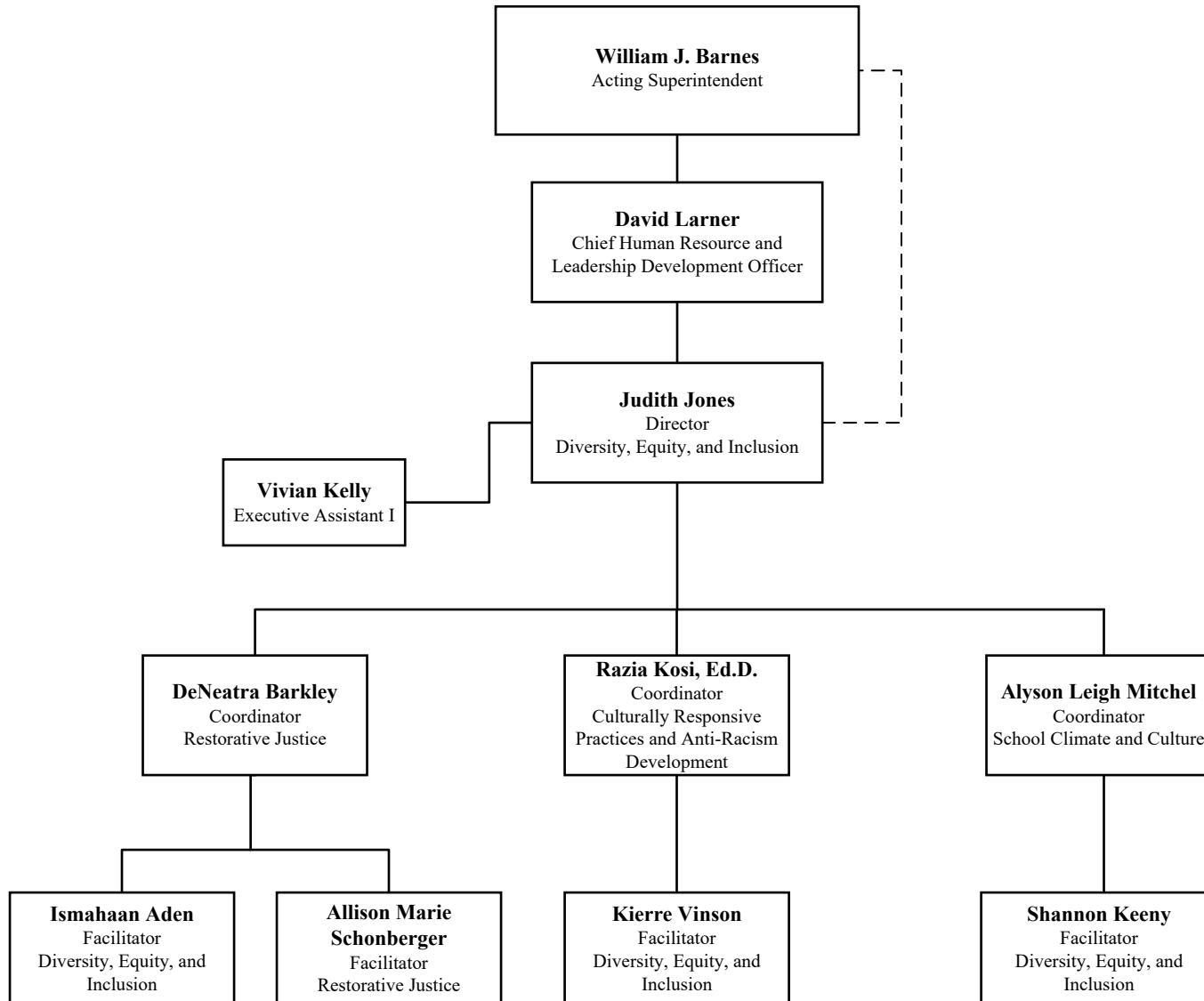
Division of Human Resources and Professional Development



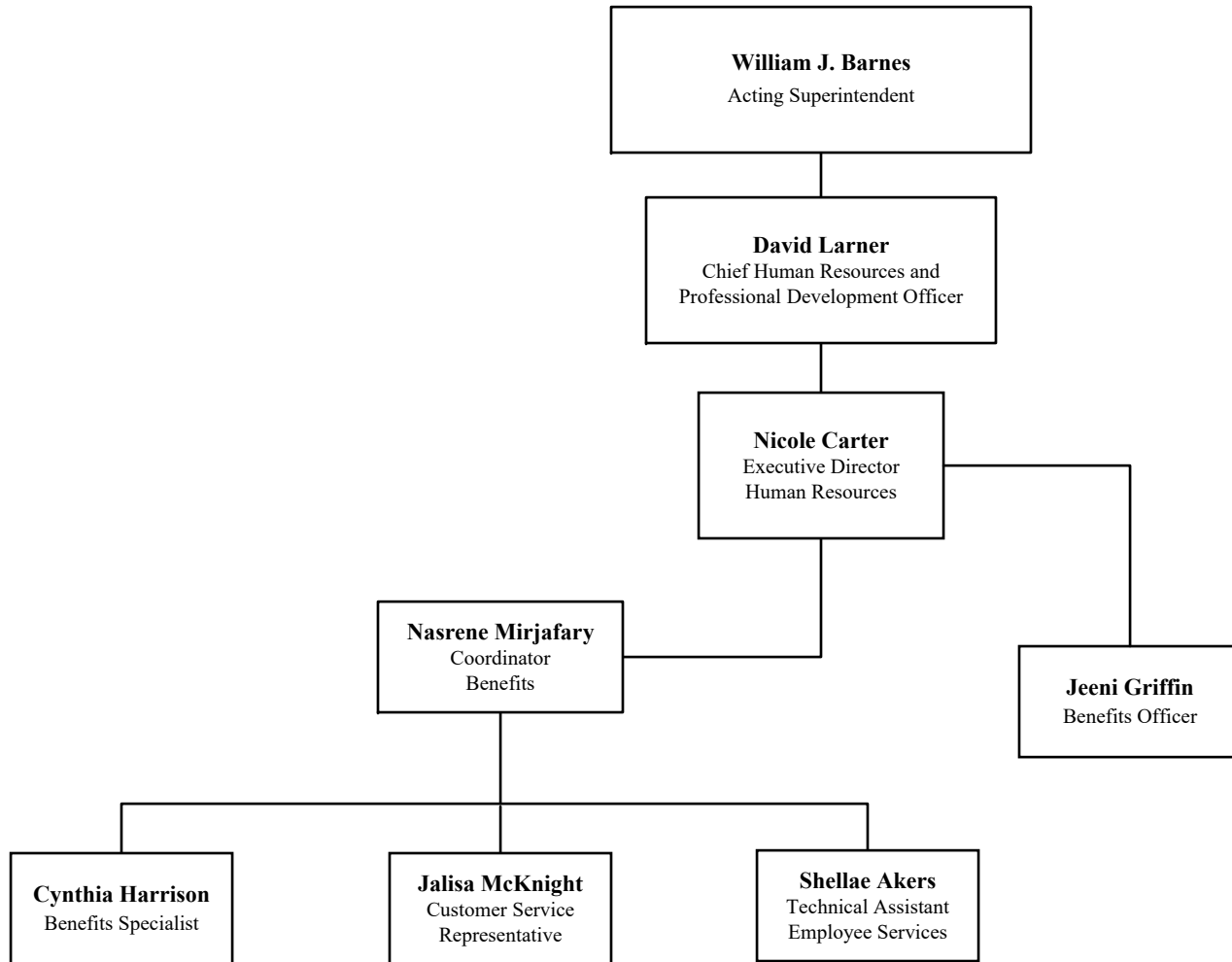
Office of Human Resources



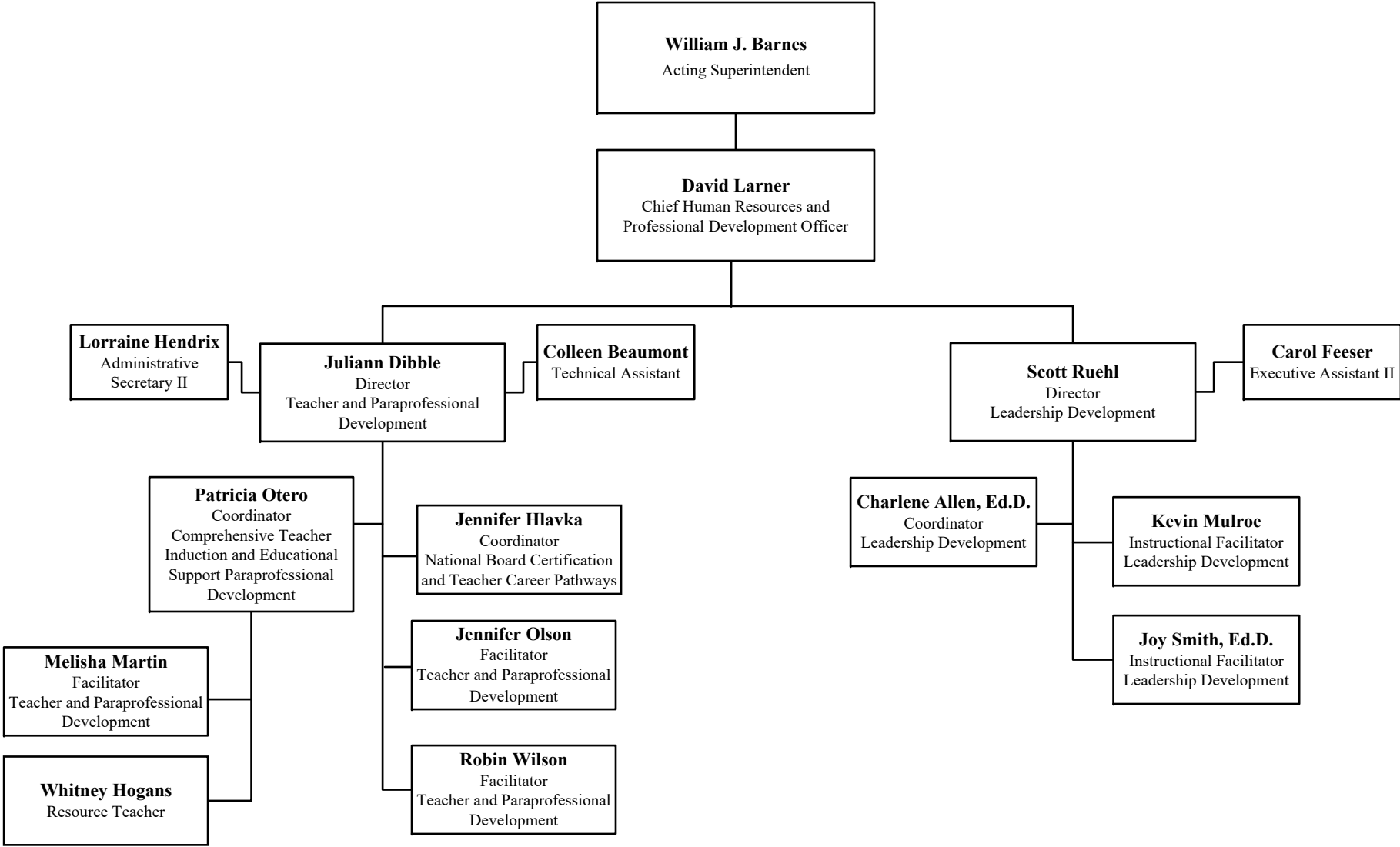
Office of Diversity, Equity, and Inclusion



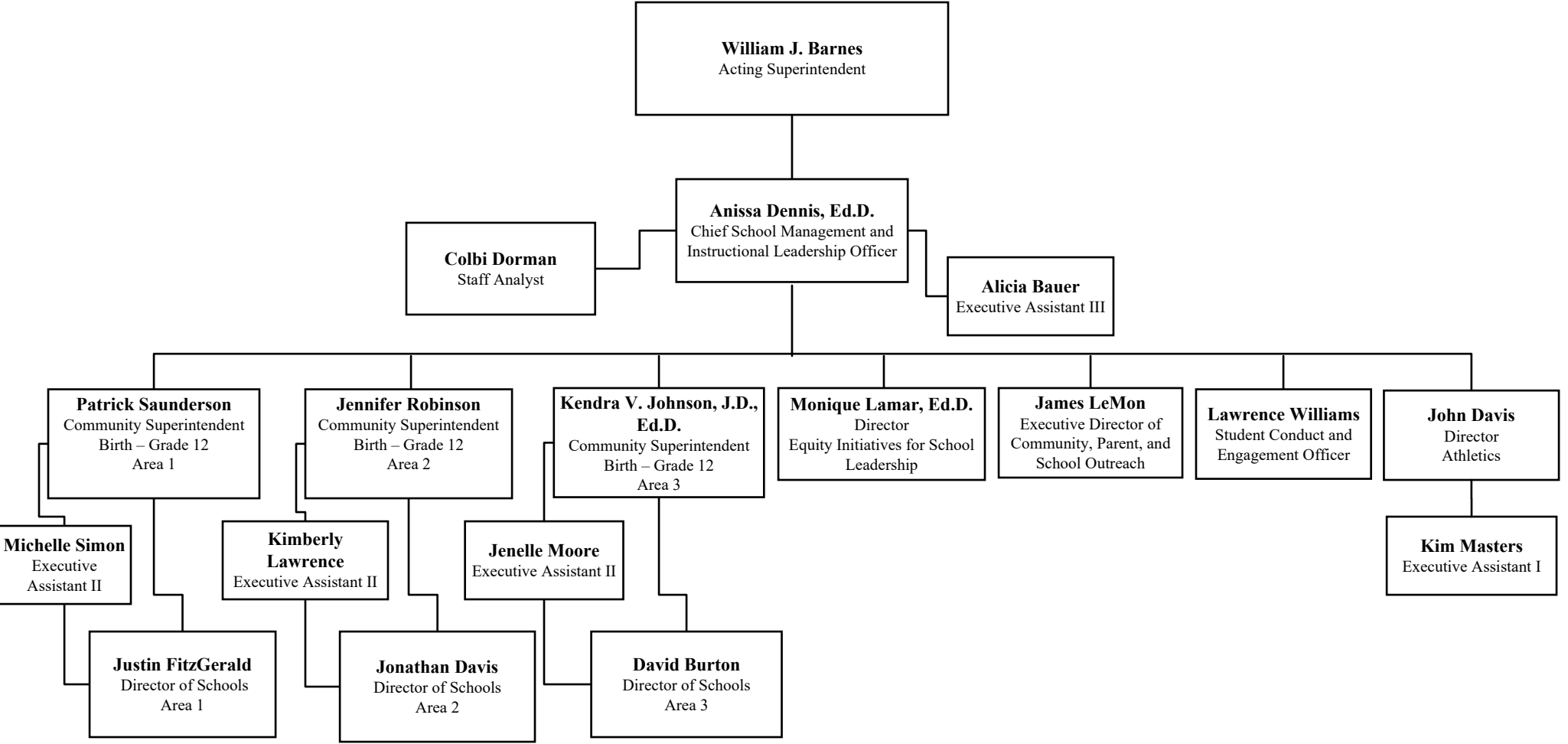
Office of Benefits



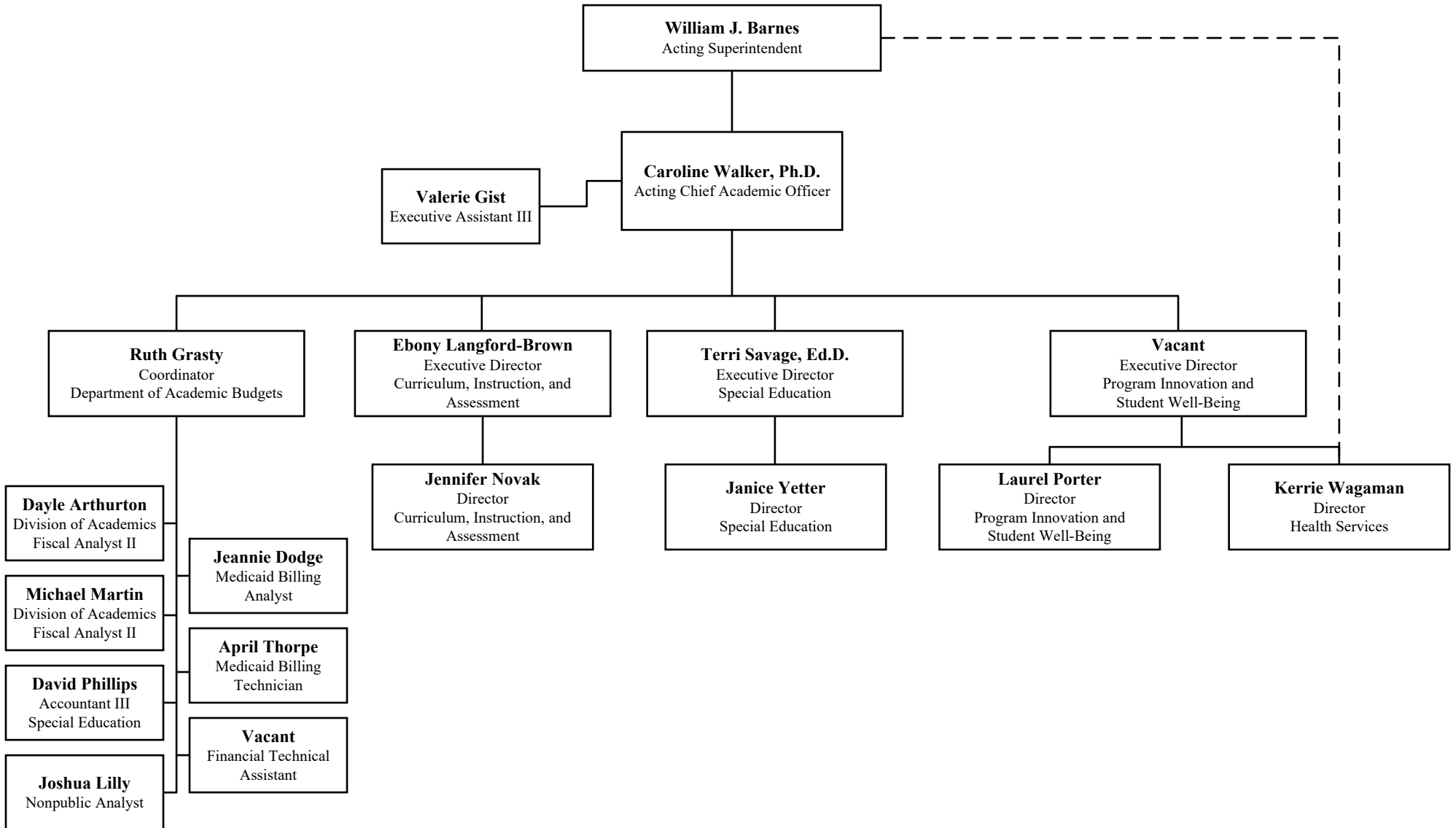
Offices of Professional Development



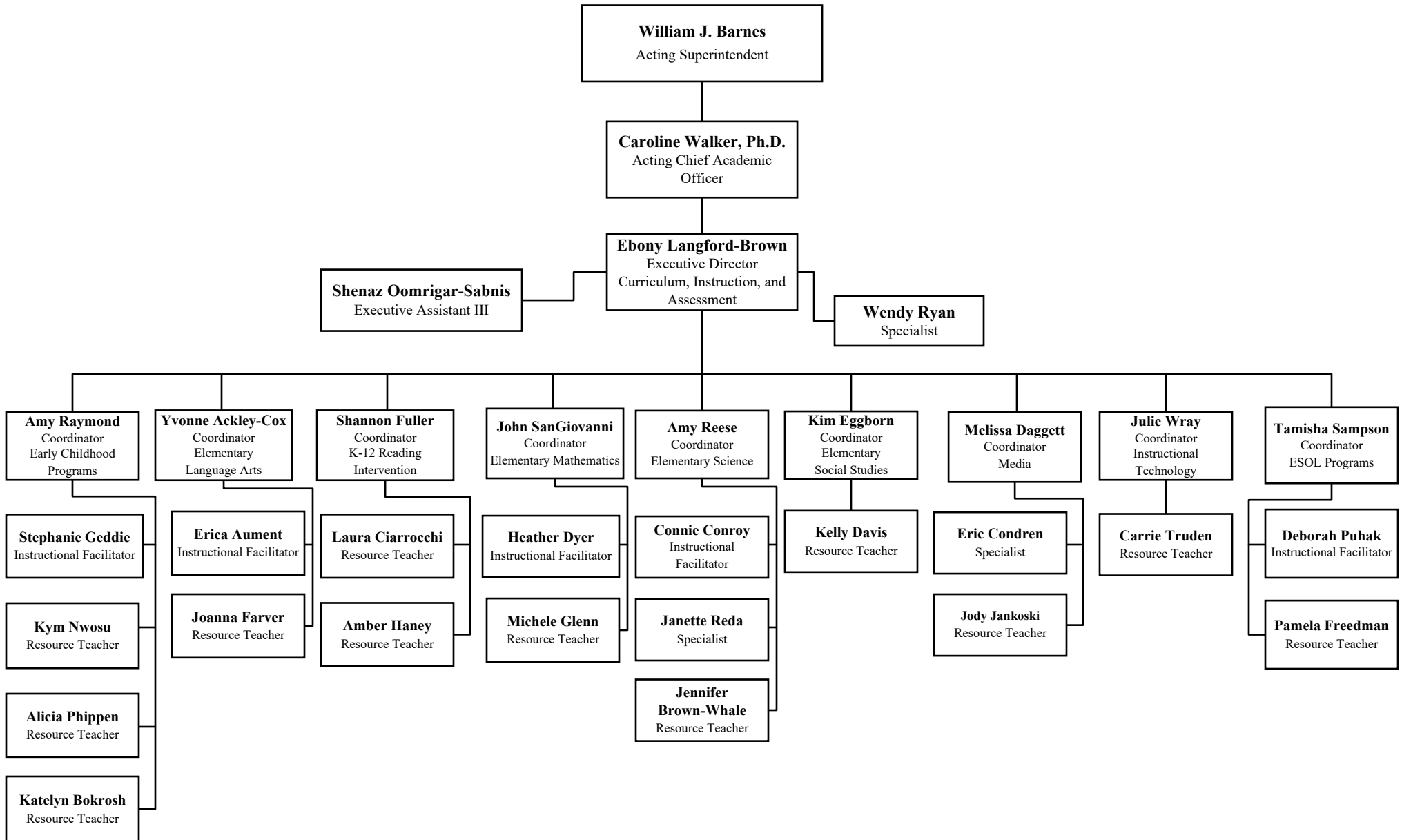
Division of School Management and Instructional Leadership



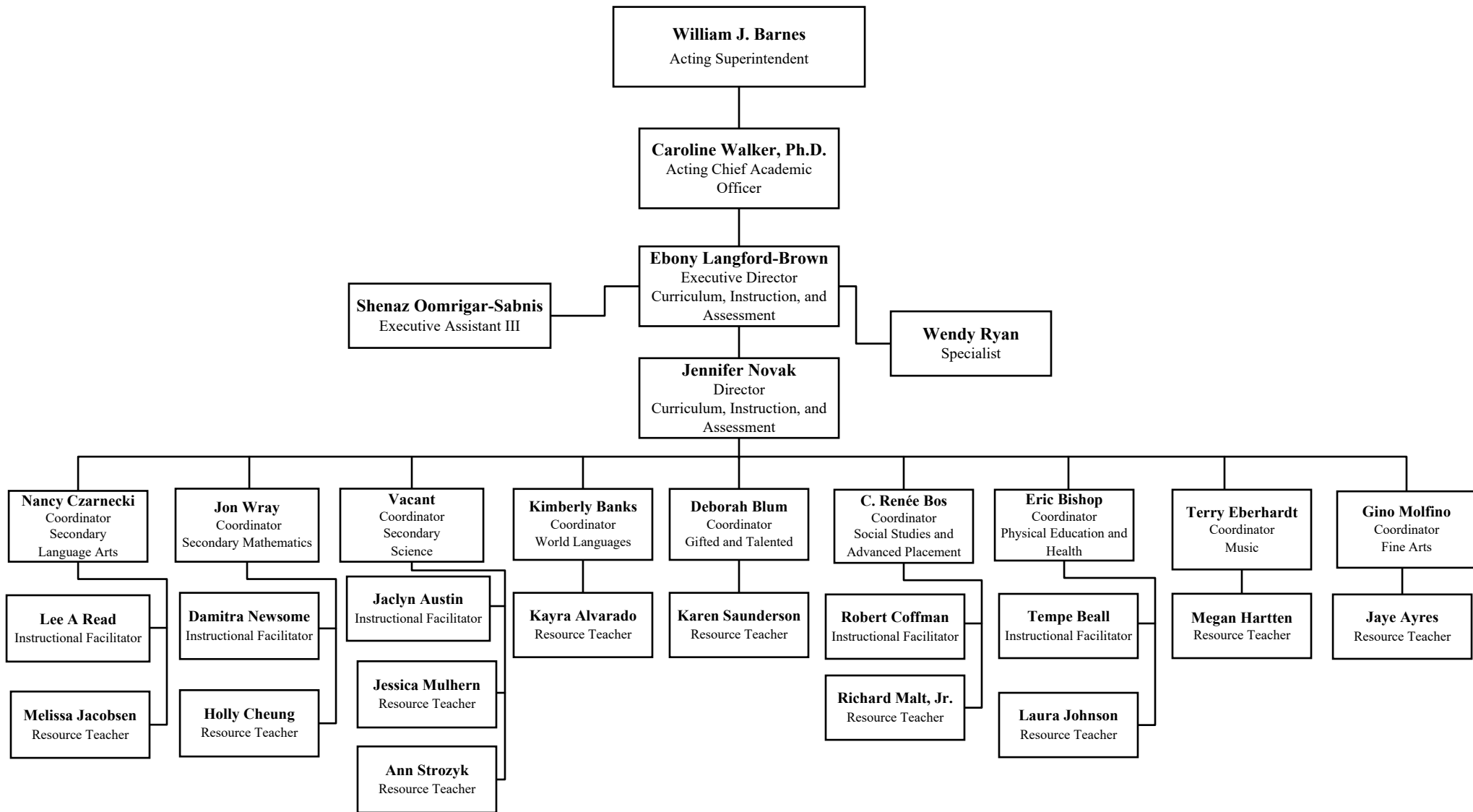
Division of Academics



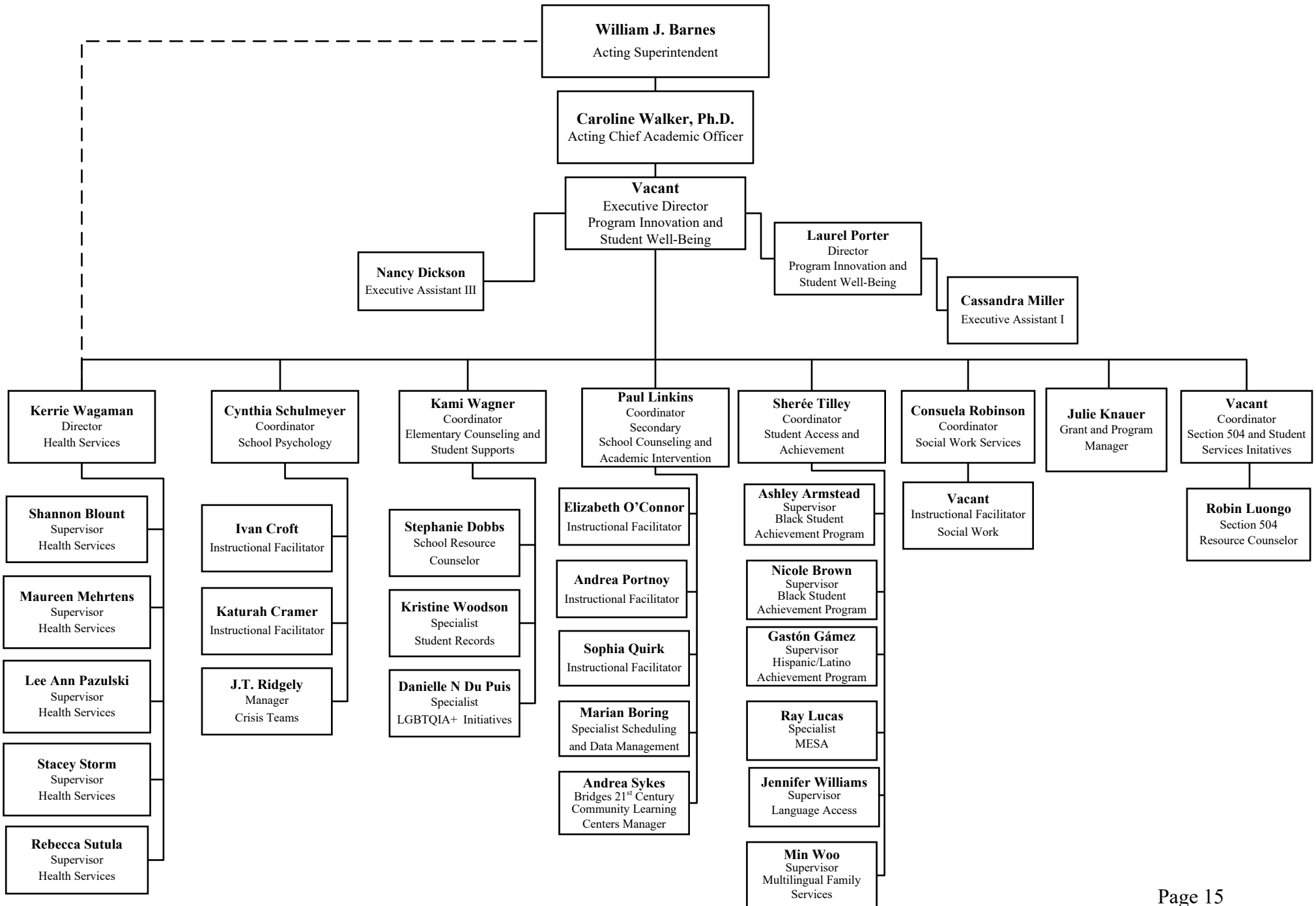
Department of Curriculum, Instruction, and Assessment



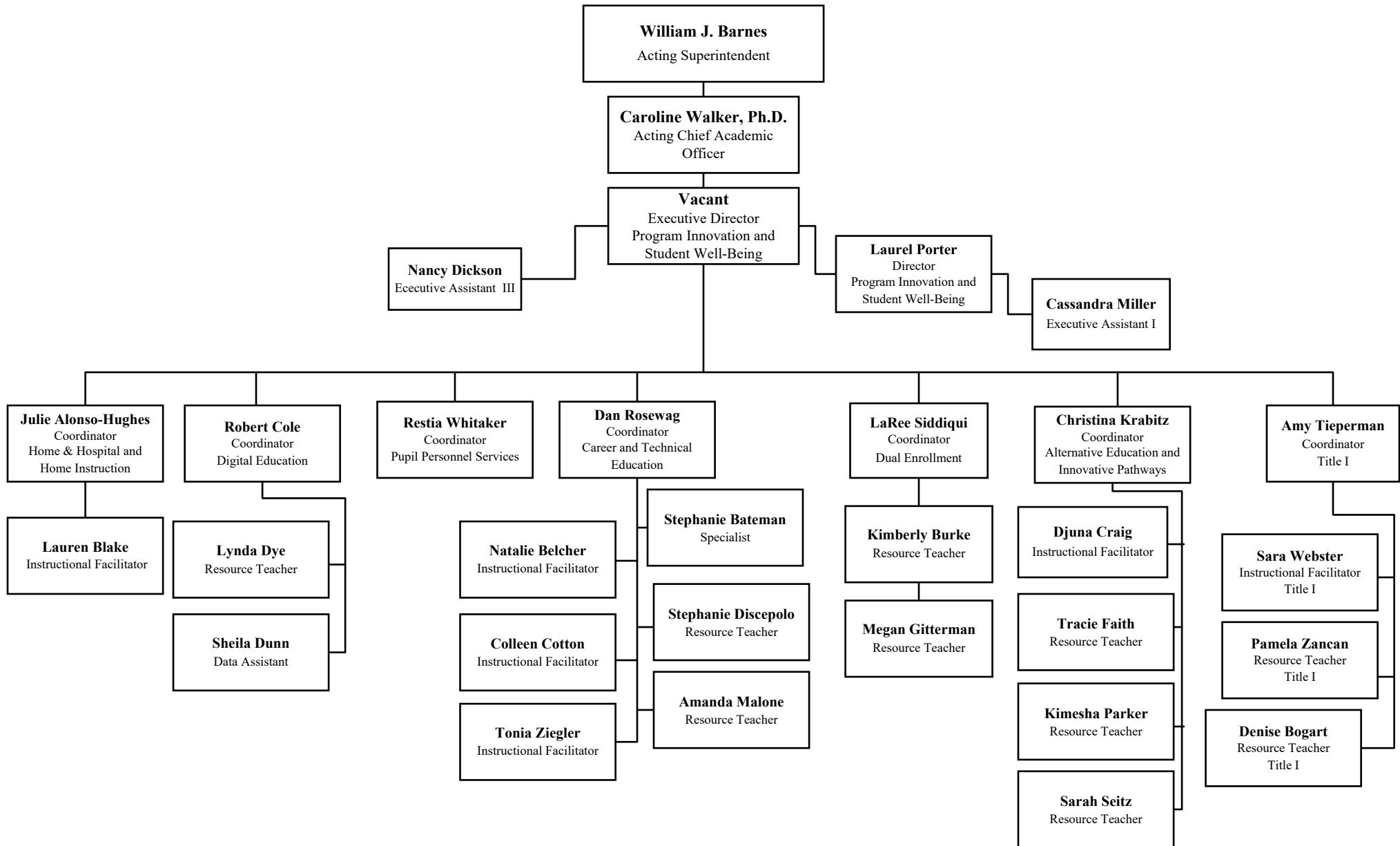
Department of Curriculum, Instruction, and Assessment



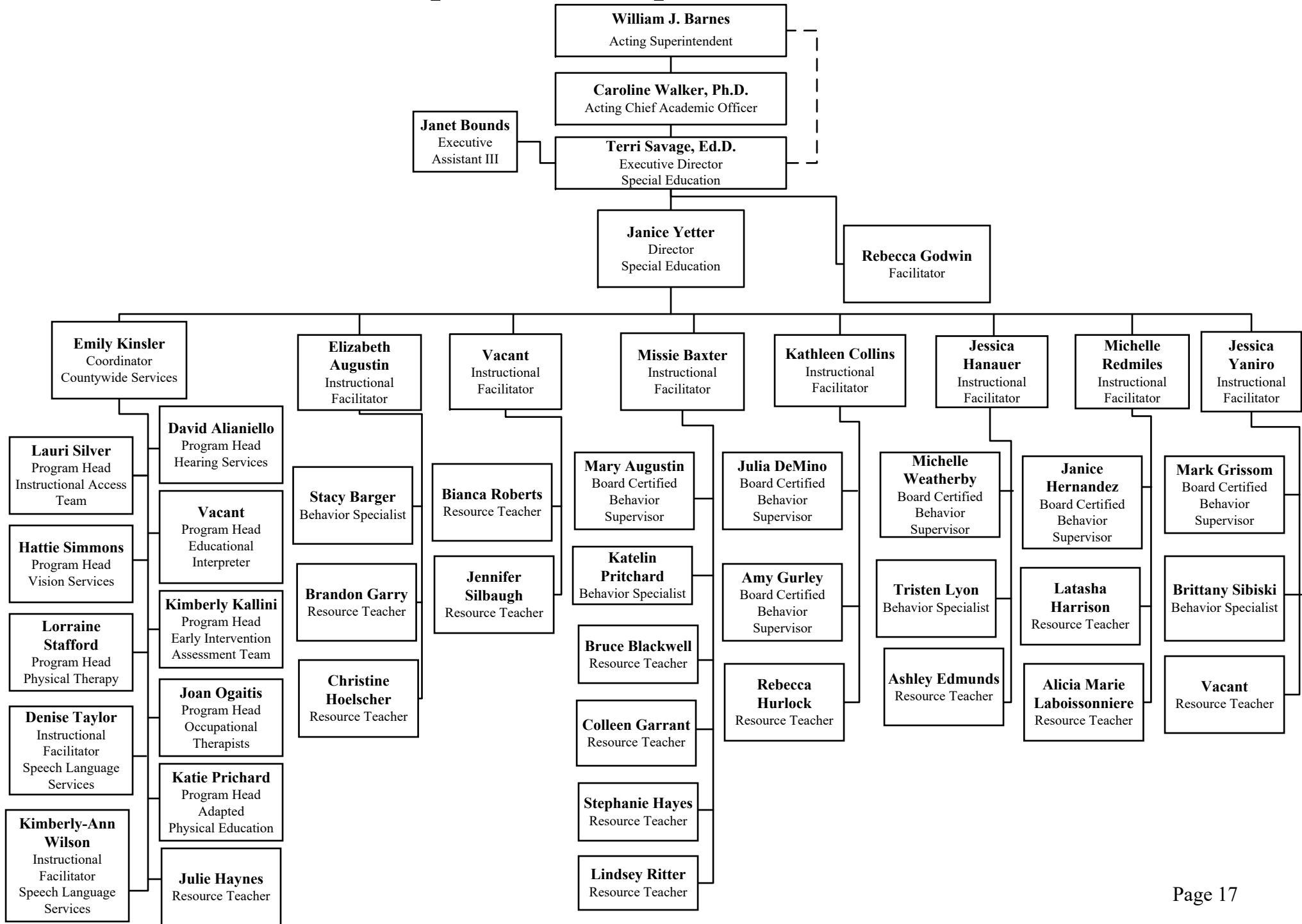
Department of Program Innovation and Student Well-Being



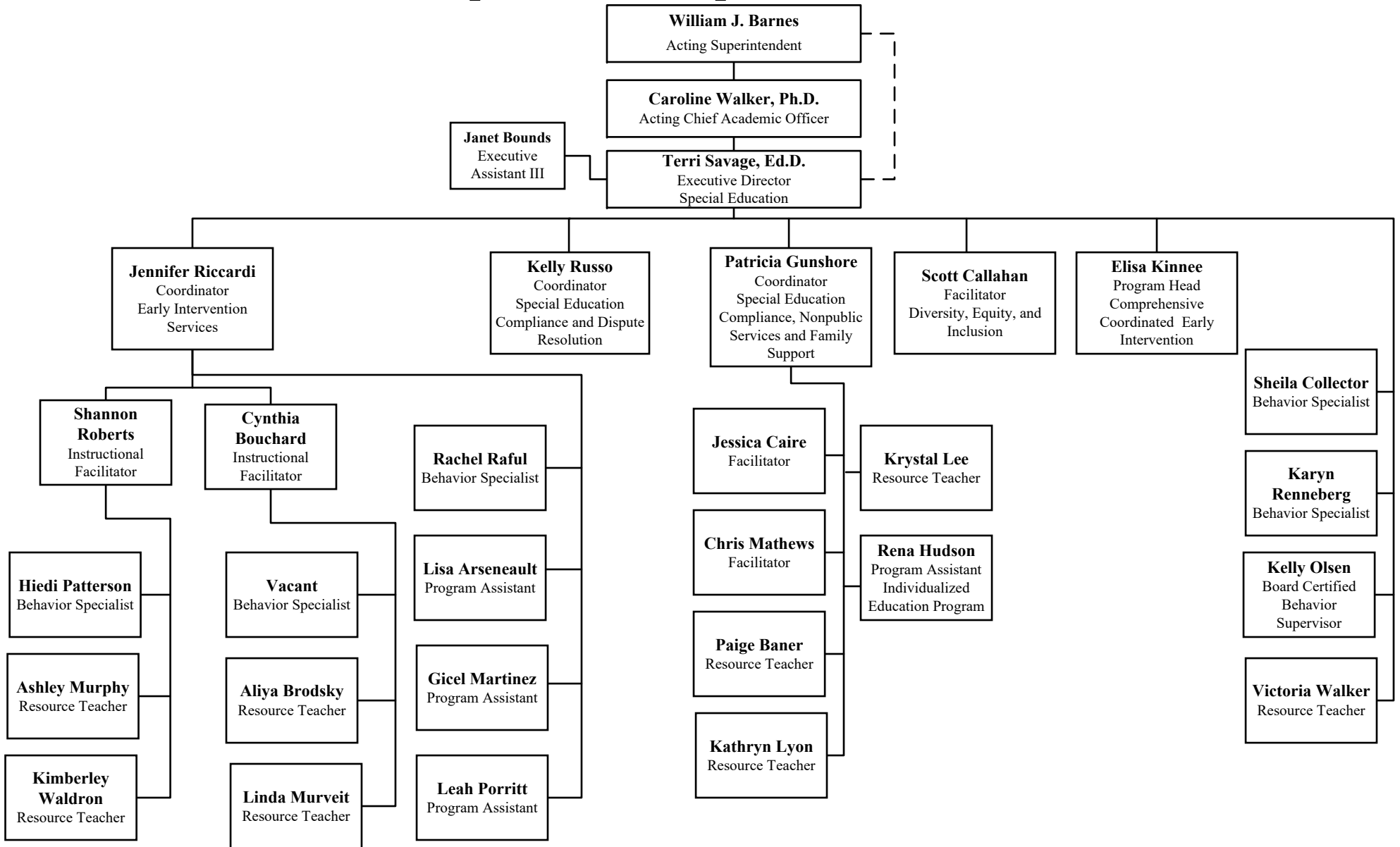
Department of Program Innovation and Student Well-Being



Department of Special Education



Department of Special Education



Division of Administration

William J. Barnes
Acting Superintendent

Jahantab Siddiqui
Chief Administrative Officer

Brianna Hartley
Executive Assistant III

Emily Bahhar
Director
Multimedia
Communications and
School Support

Annette Bartlett
Grants Administration
Manager

Brian Bassett
Director
Communication and
Engagement

Sundeep Patel
Controller

Sandra Vecera, Ed.D.
Project Support Manager

Darin Conforti
Executive Director
Budget

Matthew Barger
Senior Web
Developer

**Brendan
Anderson**
Web Developer

Nicholas Griner
Photographer

Anna Gable
Specialist
Communications

Jennifer Rose
Specialist
Communications

Vacant
Specialist
Communications

Jarrold Thompson
Manager
Print Services

David Smith
Specialist
Print Services

Tara Chiu
Audiovisual Producer

James McLean, Jr.
Large Format Print
Production Assistant

Susan Williams
Assistant
Print Services

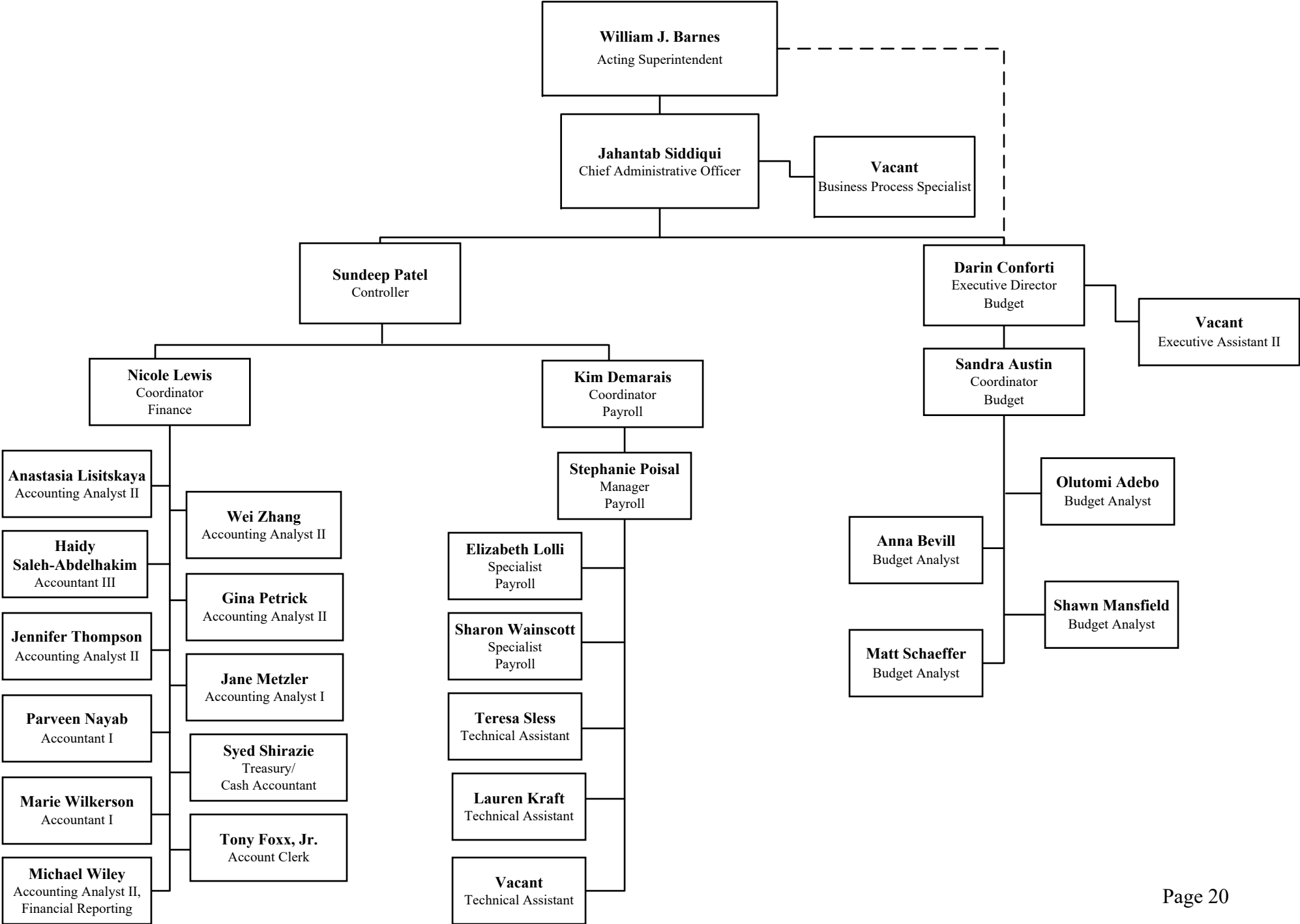
Allison Whitney
Community and
Workforce Engagement
Specialist

Alison Cuomo
Specialist
Communications

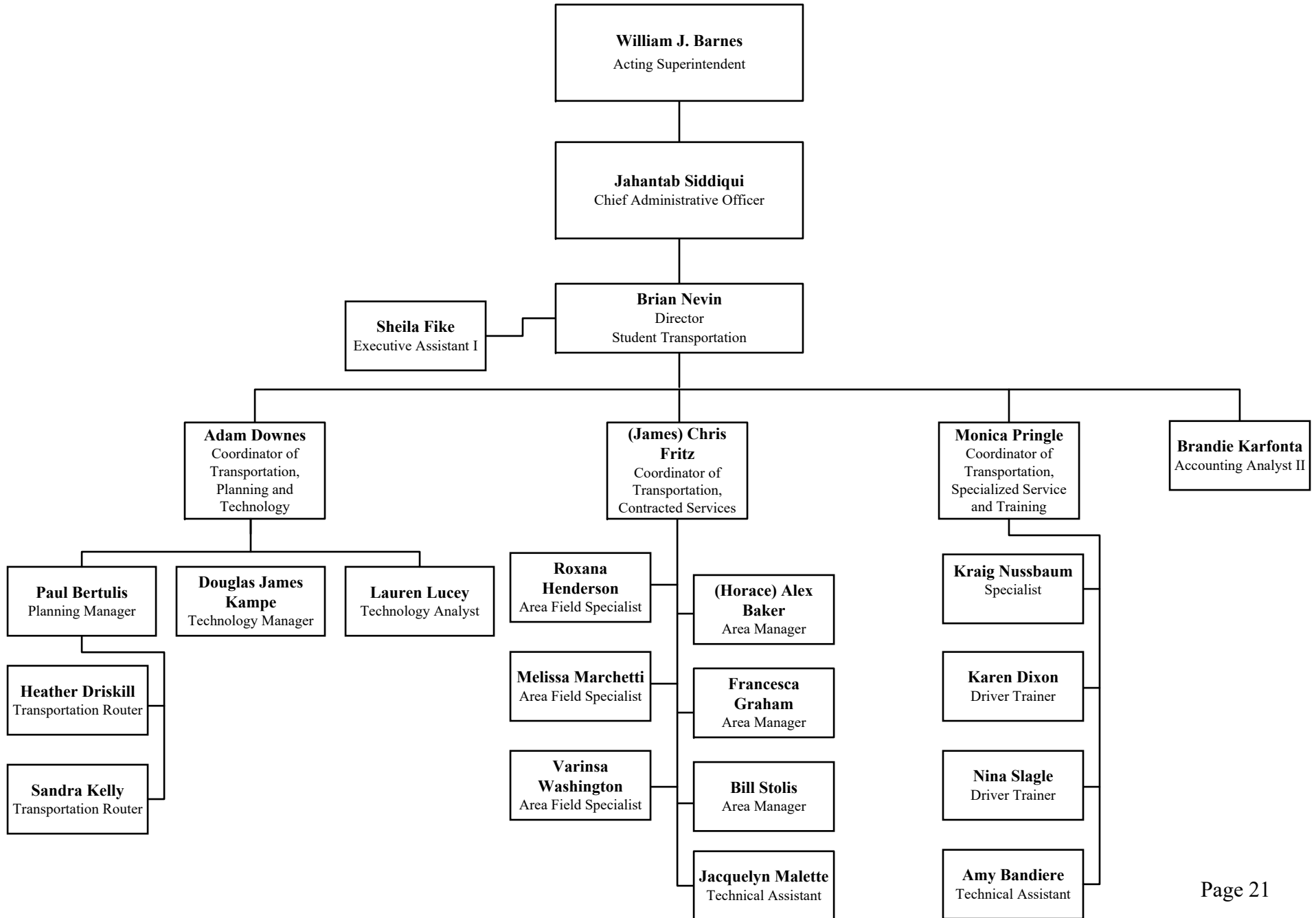
Vacant
Manager
Community Partnerships

Priscilla Reaver
Specialist
Community
Partnerships

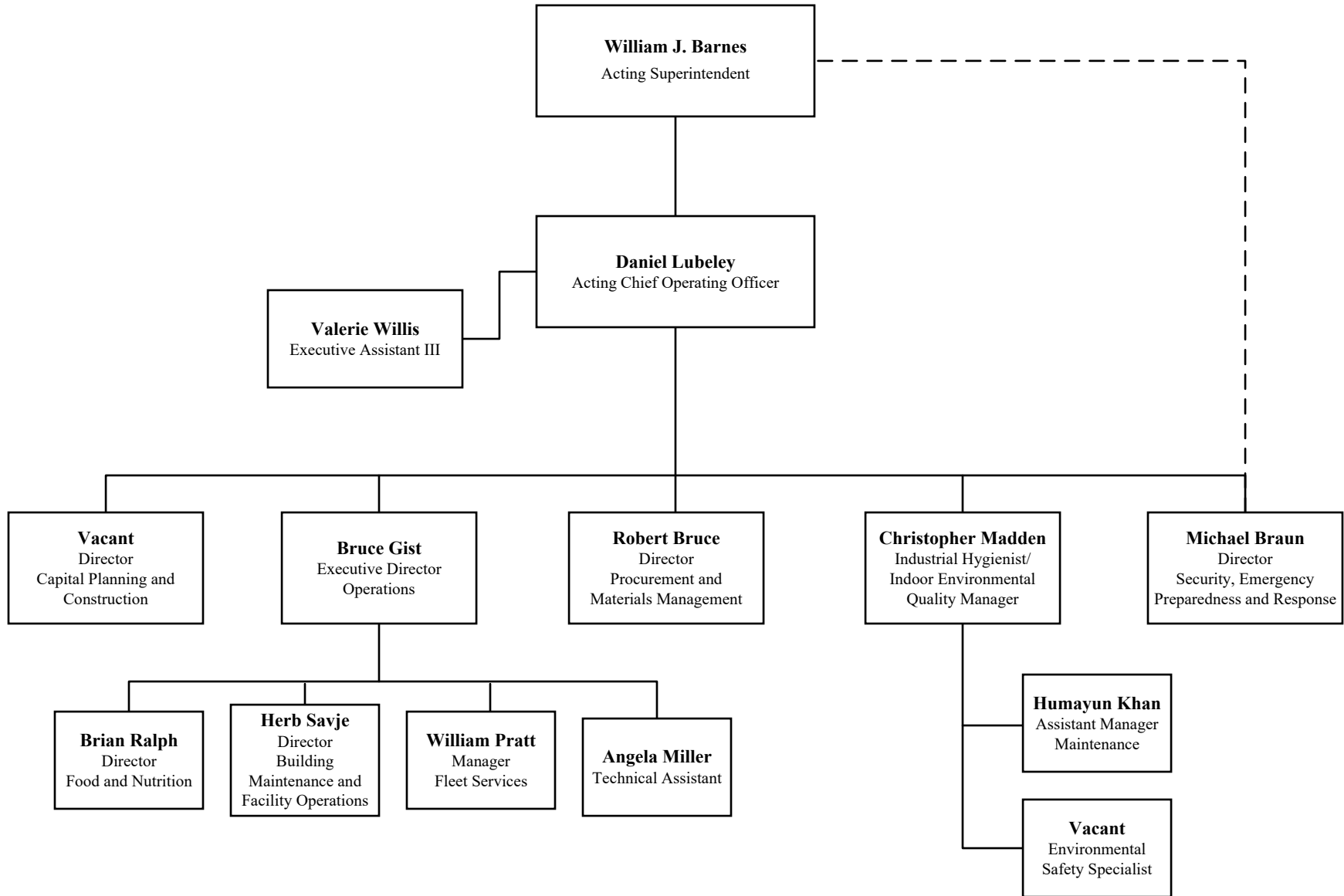
Offices of Budget and Finance



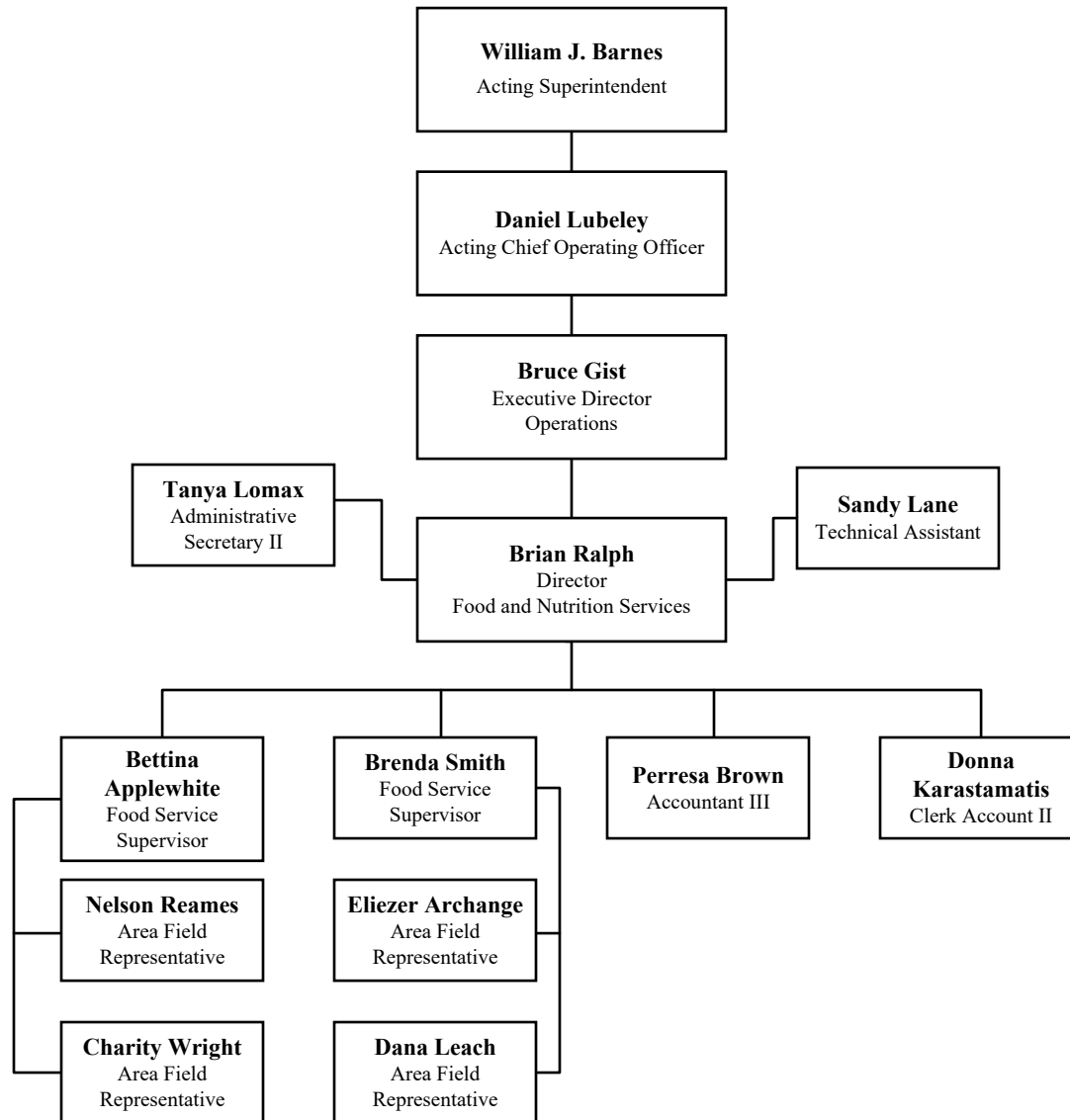
Office of Transportation



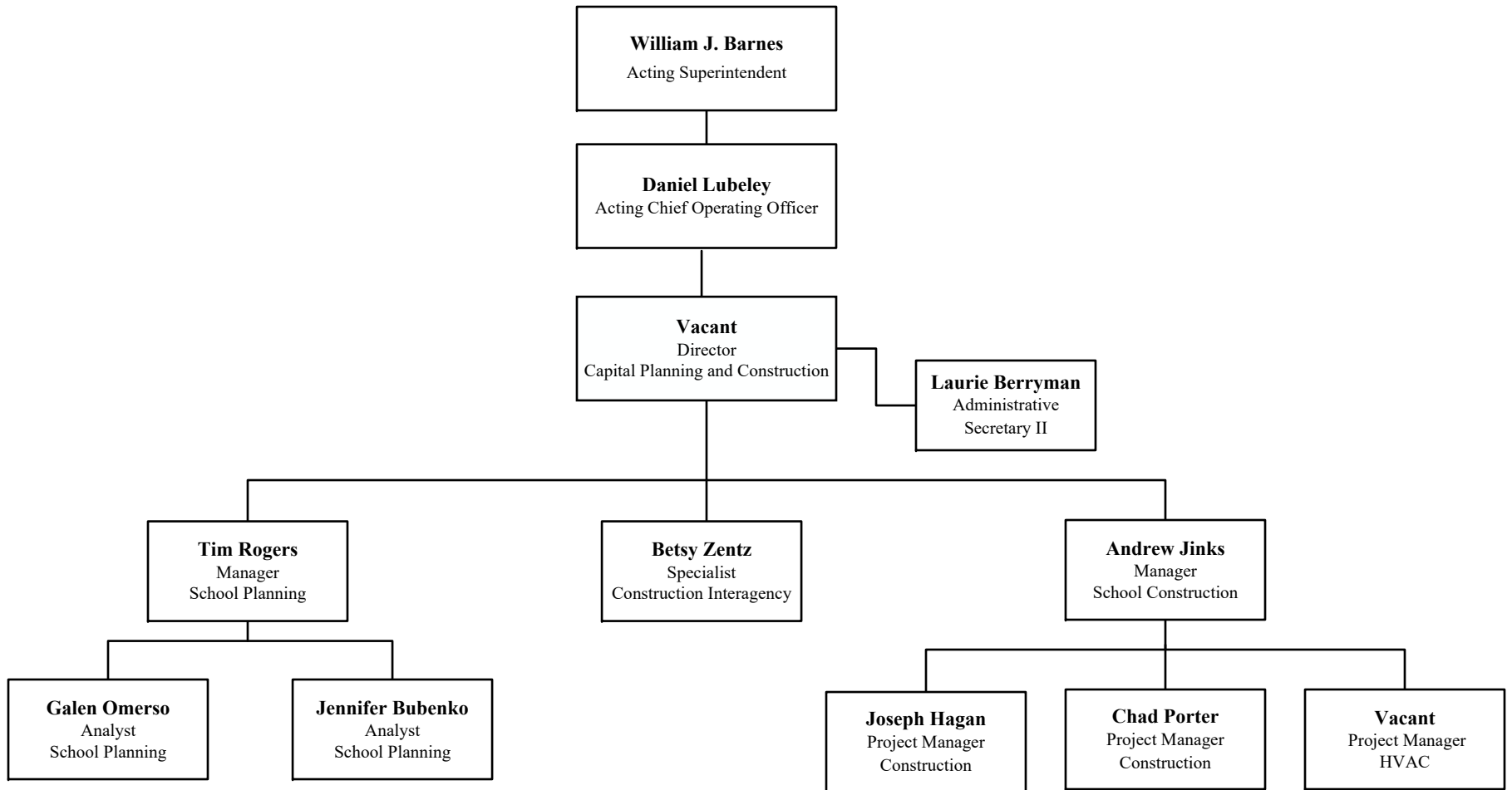
Division of Operations



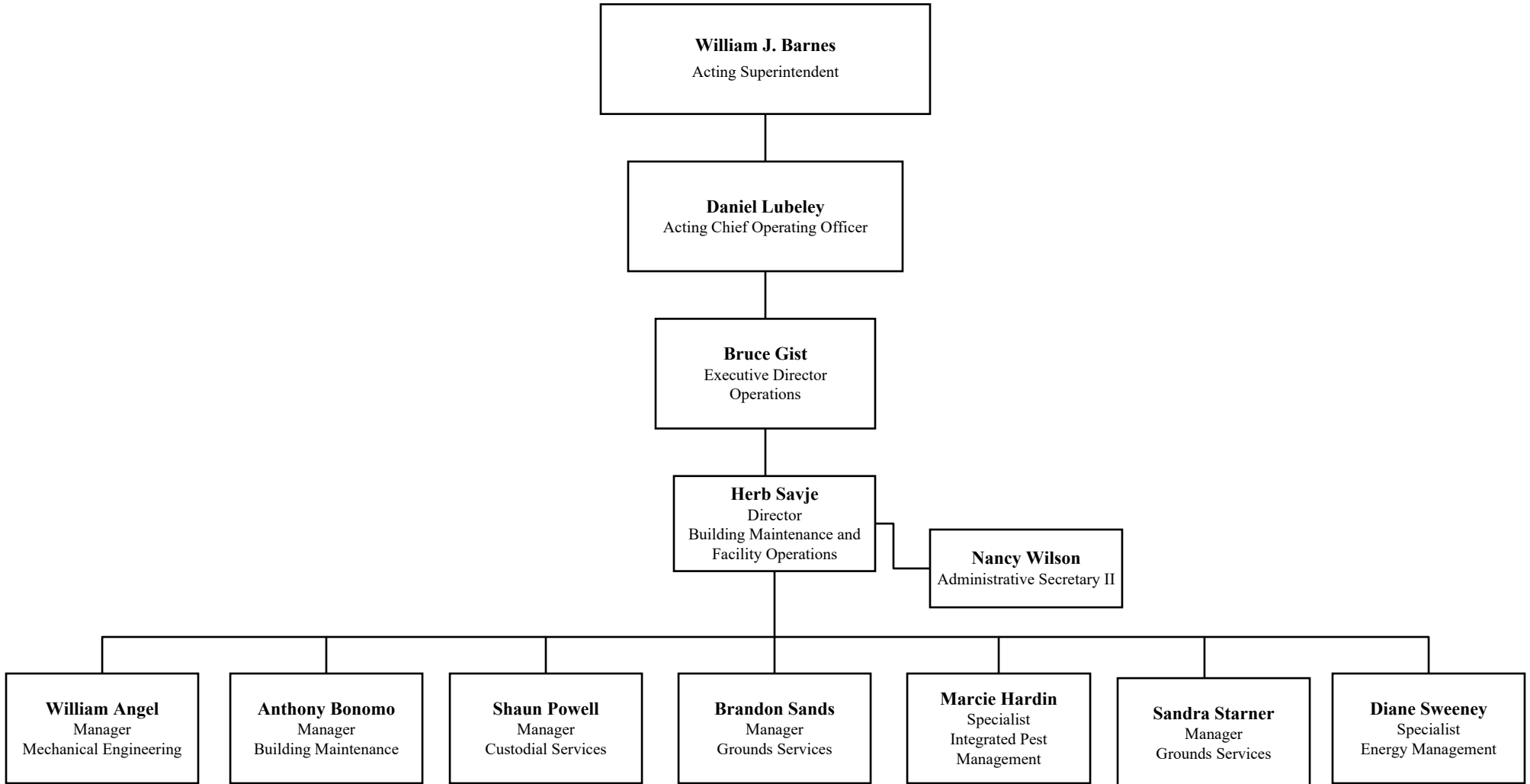
Office of Food and Nutrition Services



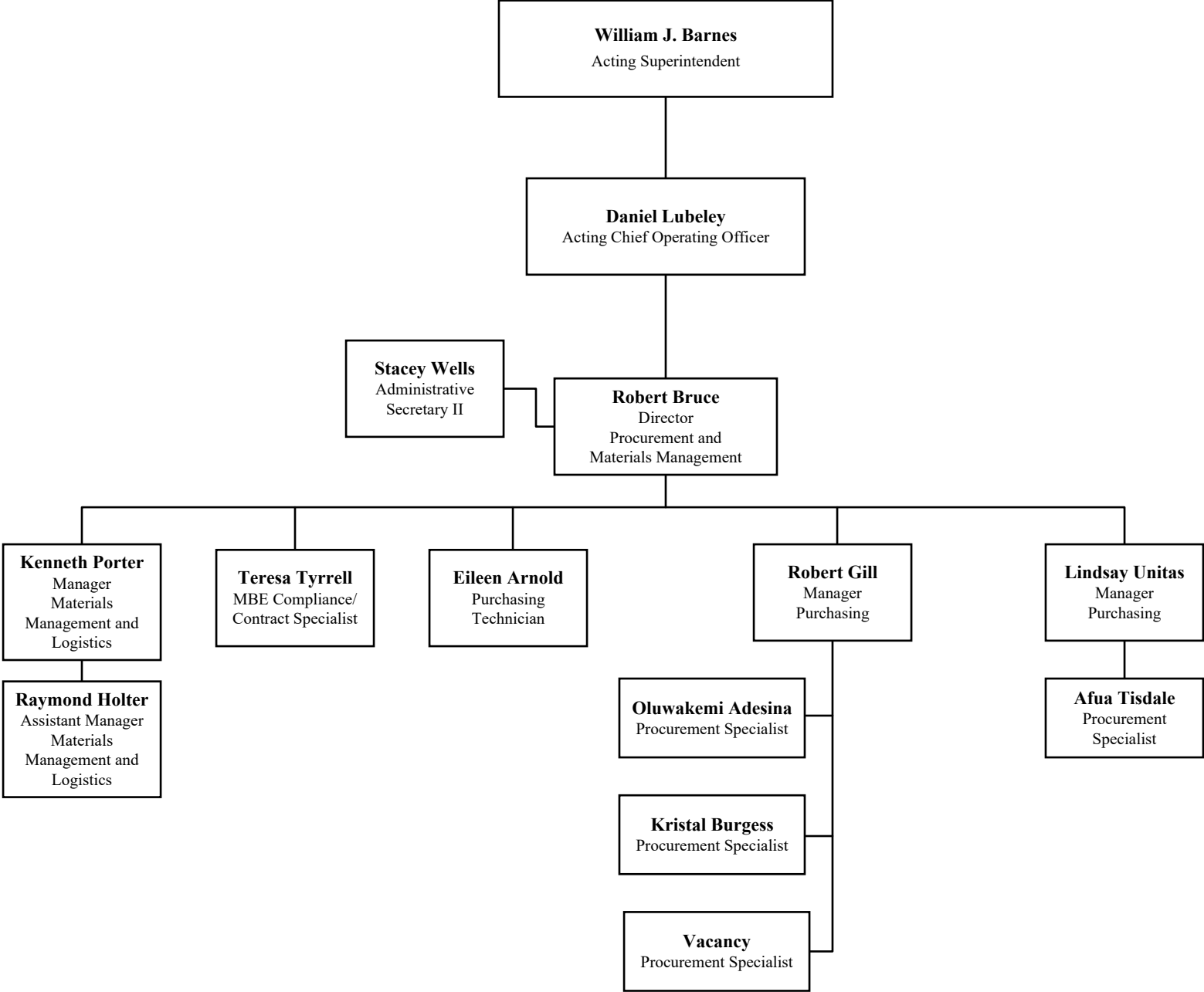
Office of Capital Planning and Construction



Office of School Facilities



Office of Purchasing



Office of Safety and Security

