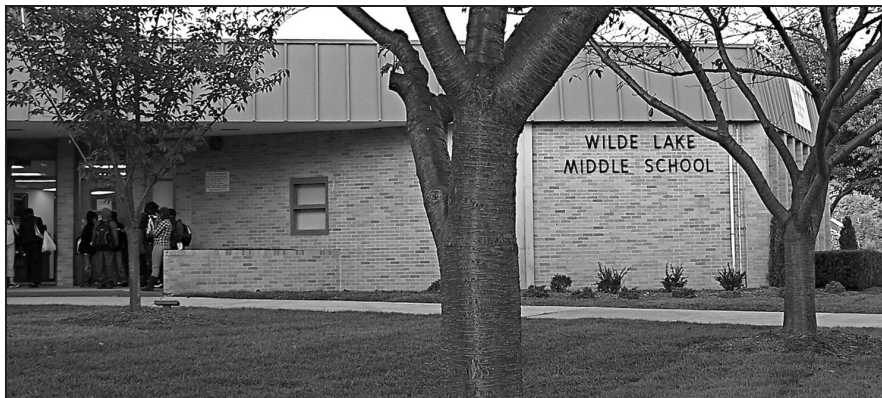


Wilde Lake Middle School

PROFILE

2009-10

10481 Cross Fox Lane • Columbia, MD 21044 • 410.313.6957 • <http://wlms.hcps.org>



At Wilde Lake Middle School (WLMS), students, staff and parents work collaboratively to provide a safe, nurturing environment that is focused on academic excellence for all. Since the school opened in 1969, the staff has worked hard to develop a tradition of high academic standards and have created a wide range of enrichment activities that promote the development of healthy, productive and ethical citizens. Over the years, WLMS students and staff have consistently been honored for outstanding academic achievement. As we look to the future, we are excited about providing our students with the skills necessary to excel in an ever-changing and complex world.

Our talented staff recognizes the unique needs of adolescents and is dedicated to providing learning opportunities that foster the intellectual, social, emotional and physical development of our students. In addition, we encourage our students to think critically and creatively by providing rigorous academic classes, as well as a variety of related arts courses such as Art, Family and Consumer Sciences, World Languages, Health, Music, Chorus, Band, Strings, Physical Education and Technology Education.

WLMS is committed to having all students meet the challenging performance standards established by our county, state and national governments. Also, to ensure a well-balanced educational experience for our students, we provide a number of extra-curricular activities through our After School at the Lake Program (homework clubs, a girl's running club, art club, drama club, baseball, basketball, robotics and the aqua-havens program).

We are proud of our strong and supportive PTSA and the many business partnerships we have established. On a daily basis, parents and community members can be found volunteering to help our students learn and grow. Our staff is very grateful for all of the support and encouragement we receive from the Columbia community.

Together, the WLMS community is working to ensure the success of all our students by instilling the "Wilde Lake Way" of being Respectful, Responsible, Ready and Safe.

Thomas M. Saunders, Principal
Lisa R. Smithson, Assistant Principal

Fast Facts

Facility opened - 1969

Additions/Renovations: 1974, 1998 (R)

School Capacity: 506
(This does not include additional capacity provided by 2 portable classrooms.)

Total Enrollment: 475

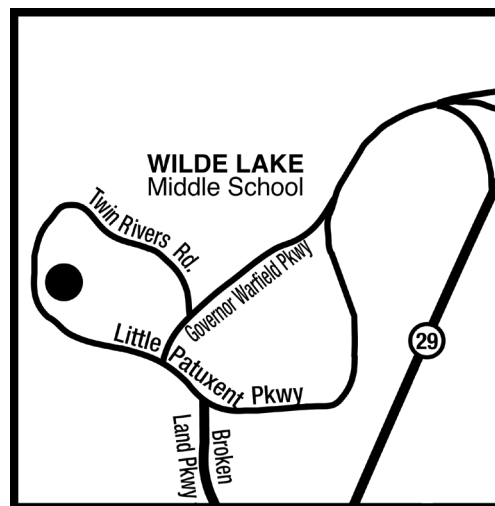
Ethnicity

White	31.0%
African American	51.3%
Asian	7.8%
Hispanic	4.9%
Native American	0.2%
Not Reported	4.9%

Students Receiving Special Services 2008-09

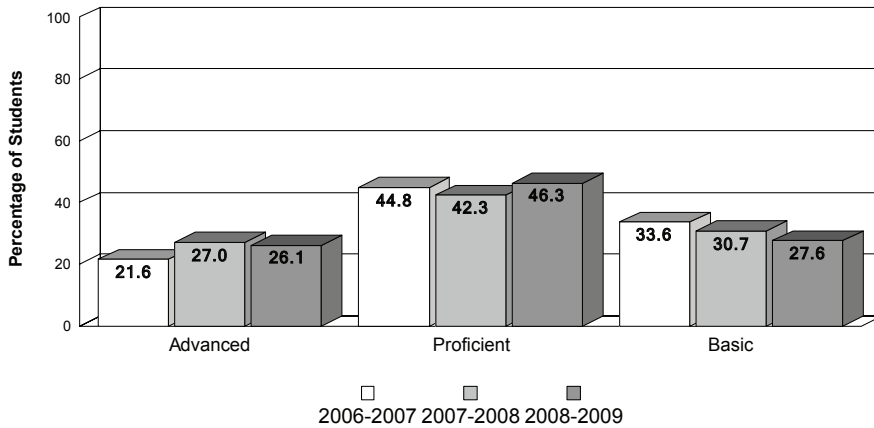
Ltd. English Proficient	2.0%
Free/Reduced Lunch	26.9%
Special Education	8.9%

PTSA members: 300

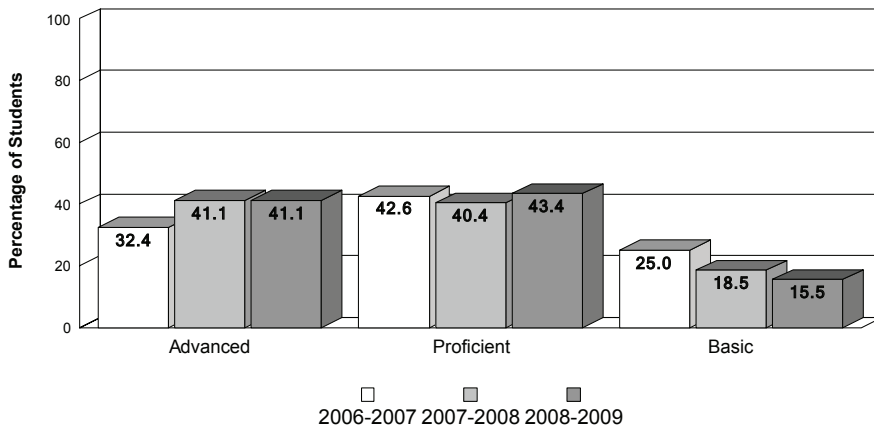


Achievement Data

Wilde Lake Middle School MSA - Mathematics



MSA - Reading



MSA Standards - Percent Advanced/Proficient

School Year	MSDE AYP Standards		Howard Cty Standard	Wilde Lake MS	
	Reading	Mathematics		Reading	Mathematics
2006-2007	66.3	50.0	70.0	75.00	66.40
2007-2008	71.1	57.2	70.0	81.50	69.30
2008-2009	75.9	64.3	70.0	84.50	72.40

Accomplishments

- Healthy Howard Innovation in Physical Activity, 2009
 - Maryland PBIS* Exemplar School - Gold School, 2009
- *Positive Behavior Interventions and Support

Special Programs

- Alternative Lifeskills Program
- Alternative Education Program
- AKA Mentor Program
- Aqua Havens Program
- Black Saga Competition
- WLMS Book Club
- BSAP
- Bridges Grant (After-School program)
- Chesapeake Bay Trust Grant to G/T 8th grade Science Program
- Daily TV Production – Eye Opener
- Debate Team
- Destination Imagination
- Disabilities Awareness Program (DAP)
- Drama Club
- Enrichment Fair
- ESOL
- Geography Bee Competition
- Gifted and Talent Program
- HCC Mentor Program
- Intramurals
- Jazz Band
- Junior Envirothon Team
- Literary Magazine Club
- Little Lakers Choral Program
- Math Support Teacher
- Maryland State Arts Council Grant for Cultural Arts Residency
- Memory Book
- Newspaper Club
- Outdoor Education Experience
- Parent Liason
- PBIS Program
- Percussion Ensemble
- PTA Reflections
- Reading Support Teacher
- Recycling Program
- Service Learning
- Shared Summits Program
- SoMirac Young Authors competition
- Spell Read
- Summer School
- Washington Post grant for the Arts
- Writers Guild

Business Partnerships

- All Financial Services
- Artificial Reefs, Inc.
- Blacks of the Chesapeake
- Earth Treks Climbing Center
- Howard County Library-Central Branch
- Lazarus Foundation
- Maryland Sea Grant
- National Aquarium in Baltimore