

Murray Hill Middle School

PROFILE

2009-10

9989 Winter Sun Road • Laurel, MD 20723 • 410.880.5897 • <http://mhms.hcpss.org/>



Our Mission Statement

All members of the Murray Hill Middle School community are committed to providing and maintaining an inviting, structured, safe and orderly learning environment fully conducive to the process of teaching and learning, by a team of caring, competent, informed, well-planned administrators, teachers and support staff.

Built upon a rural piece of land in north Laurel, Murray Hill Middle School is no longer surrounded by farmland, a pond, streams, and off the beaten path. It has become a community magnet with two new housing developments called Emerson and Emerson II.

Murray Hill has developed and implemented a data-driven, school-wide action plan for reading and mathematics designed to bolster achievement for all student groups. Our highly-qualified teachers provide students with performance-based instruction linked to the HCPSS Essential Curriculum and the MSDE Voluntary State Curriculum assessment limits. The parents are energized and fully participant in collaborative planning.

Murray Hill Middle School utilizes the latest in progressive technology for the millennium generation. Students are presented with a plethora of unique, technology-driven learning opportunities that re-enforce state curricular standards and promote authentic engagement. Parents are connected with the school 24 hours a day through the Internet-based grade book, TeacherEase. Each morning, Murray Hill students put their technology prowess into use as they produce a live news show on MHTV.

Boasting a 1 to 1 ratio of teacher laptops for our staff, United Streaming educational video, and three mobile labs, technology instruction is integrated across the curriculum school-wide. Murray Hill provides its students access to national, online research databases with free home access to bring cutting edge tools of learning from the school into the home.

For more information, visit our school website at www.hcpss.org/mhms.

Donyall D. Dickey, Principal
Gregory J. Lertora, Assistant Principal
Linda M. Monti, Assistant Principal

Fast Facts

Facility opened - 1997

School Capacity: 662
(This does not include additional capacity provided by 6 portable classrooms.)

Total Enrollment: 681

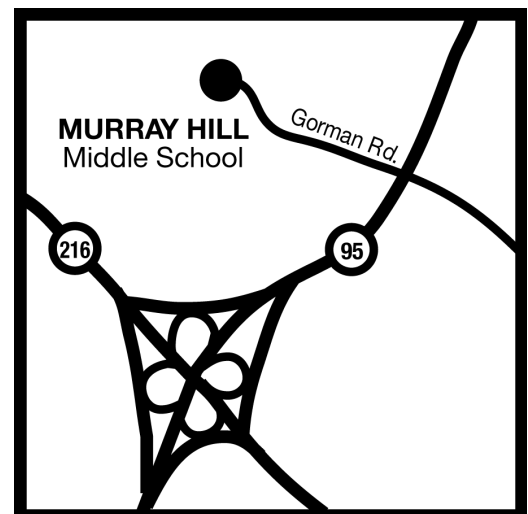
Ethnicity

White	24.9%
African American	45.6%
Asian	13.1%
Hispanic	14.3%
Native American	0.3%
Not Reported	1.8%

Students Receiving Special Services 2008-09

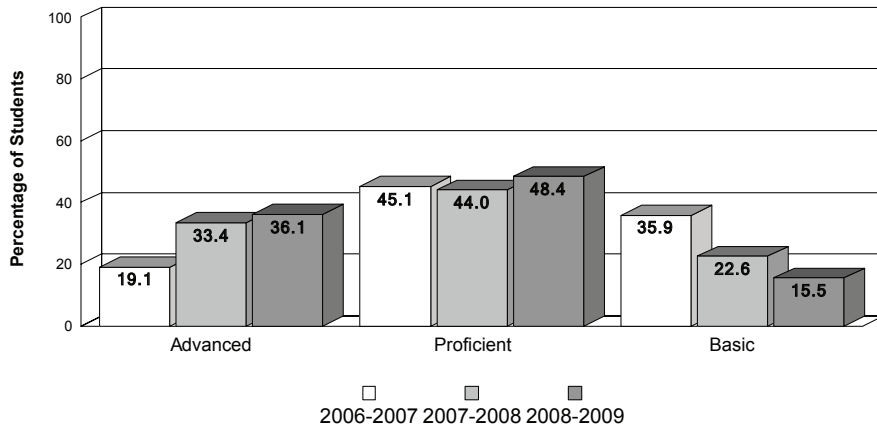
Ltd. English Proficient	3.3%
Free/Reduced Lunch	27.4%
Special Education	7.8%

PTA members: 182

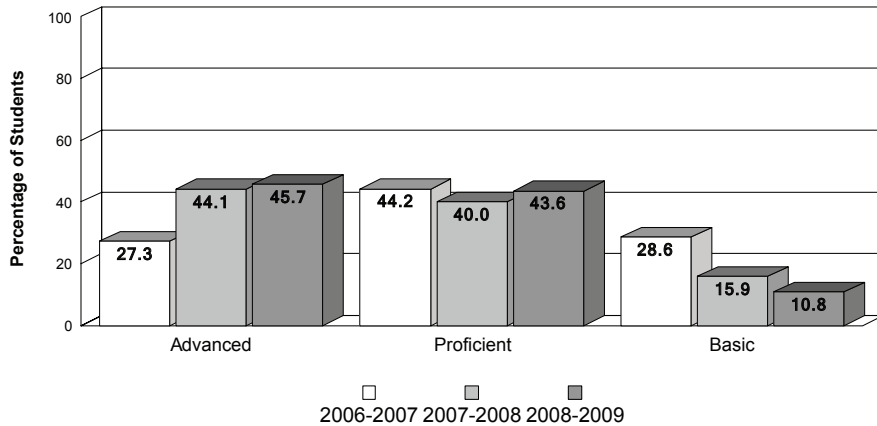


Achievement Data

Murray Hill Middle School MSA - Mathematics



MSA - Reading



MSA Standards - Percent Advanced/Proficient

School Year	MSDE AYP Standards		Howard Cty Standard	Murray Hill MS	
	Reading	Mathematics		Reading	Mathematics
2006-2007	66.3	50.0	70.0	71.40	64.10
2007-2008	71.1	57.2	70.0	84.10	77.40
2008-2009	75.9	64.3	70.0	89.20	84.50

Accomplishments

- Double Digit Gains on MSA, 2007-2009
- All-Star Debate Team
- MESA Award, 2005-2007
- JHU Physics Bowl Winners
- Howard County Middle School Science Fair Winners
- PBIS Exemplar School for State of Maryland, 2005-2008
- HCPSS Gilbert Scores for Schools Recipient, 2006-2008
- Maryland State Solo & Ensemble Festival-Superior Rating
- Music In the Parks, Six Flags America, May 2008 Competition:
 - Women's Choir, 1st Place and Excellent Rating
 - 6th Grade Chorus, 1st Place and Good Rating
 - 7th and 8th Grade Choir, 1st Place and Excellent Rating
 - Symphonic Band, 1st Place and Excellent Rating
 - Wind Ensemble, 1st Place and Excellent Rating
 - Jazz Band, 1st Place and Excellent Rating
 - Howard County Middle School Band Adjudication - Excellent Rating
 - Howard County Choral Adjudication - Excellent Rating
- Outdoor Education 10th Year Anniversary
- Maryland Art Education Association Middle School Teacher of the Year, Rachel Ludlow, 2007-2008
- Howard County History Day Winners
- Maryland History Day State Champions
- National History Day – Outstanding Project for the State of Maryland

Special Programs

- MSA Action Plan for Math and Reading
- Gifted and Talented
- After School Academic Enrichment
- Odyssey Math
- Study Island (Reading)
- Read 180
- Spell Read
- Alternative Education
- Regional Special Education
- PBIS
- Seminar Courses
- Inclusion Cohort
- Wise Society
- Destined to Speak
- Towson University Professional Development Center
- Students Will Achieve Team