

Mount View Middle School

PROFILE

2009-10

12101 Woodford Drive • Marriottsville, MD 21104 • 410.313.5545 • <http://mvms.hcpss.org>



Mount View Middle School is committed to academic excellence as we educate young adolescents in a safe and innovative environment. The goal for academic excellence inspires us to prepare all students to be successful in the globally dynamic 21st century. The goal for a safe and innovative environment integrates teaching and learning with technology tools, character development, and cultural diversity. The Peregrine Falcon is our mascot and we model this fast-flying bird as we SOAR TO SUCCESS.

We actively nurture a climate where respect, responsibility, and readiness to learn are modeled and valued. Middle school adolescents are eager and enthusiastic, and through Student Government, Peer Mediation, PRIDE Team, Spirit Team, MVTV, Green Team, and other programs, our students share an important voice in school decisions.

A strong and active PTA bridges the partnerships with home and families. Service learning projects provide opportunities for giving back to our local community and our worldwide community. More than 1200 individuals are connected through HCPSS eNews, Teacher Ease, and eScript donations. We also are proud of our website which hosts daily news, class links, innovative resources for student forums and research, and pictures/video clips to showcase our student activities (www.hcpss.org/mvms).

As a school community, Mount View Middle School values students, staff, and parents who are working together to achieve our individual best and our collective excellence. We continue to embrace bold steps to promote positive school improvement and to ensure we meet the fast-paced needs of our learners.

Kathryn McKinley, Principal
Debra O'Byrne, Assistant Principal

Fast Facts

Facility opened: 1993

School Capacity: 662
(This does not include additional capacity provided by 2 portable classrooms.)

Total Enrollment: 710

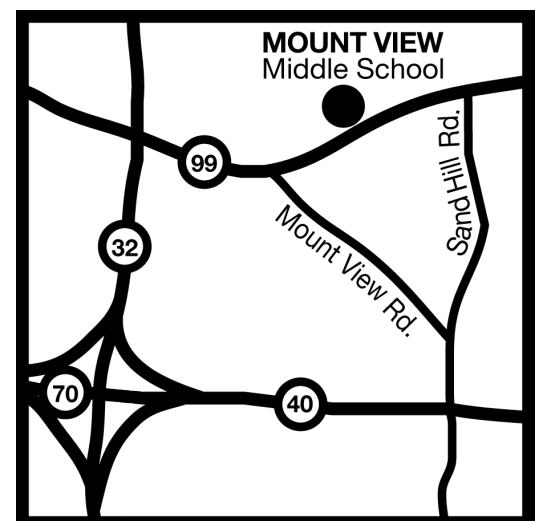
Ethnicity

White	73.0%
African American	6.1%
Asian	18.7%
Hispanic	1.4%
Native American	0%
Not Reported	0.8%

Students Receiving Special Services 2008-09

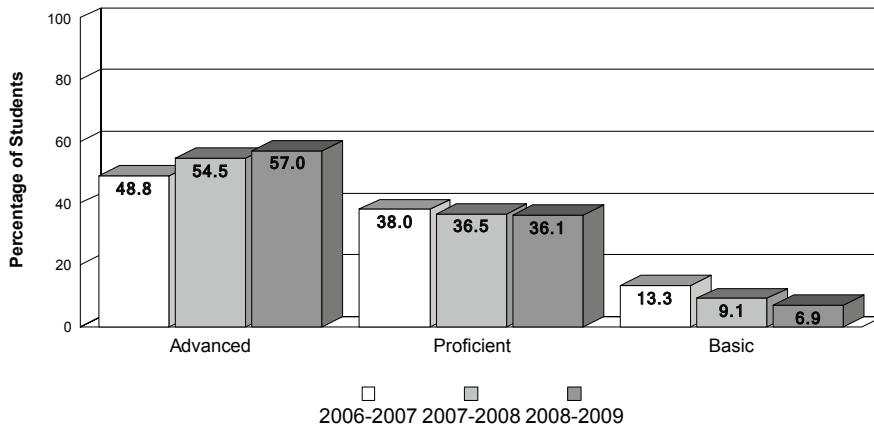
Ltd. English Proficient	1.0%
Free/Reduced Lunch	2.7%
Special Education	6.3%

PTA members: 560

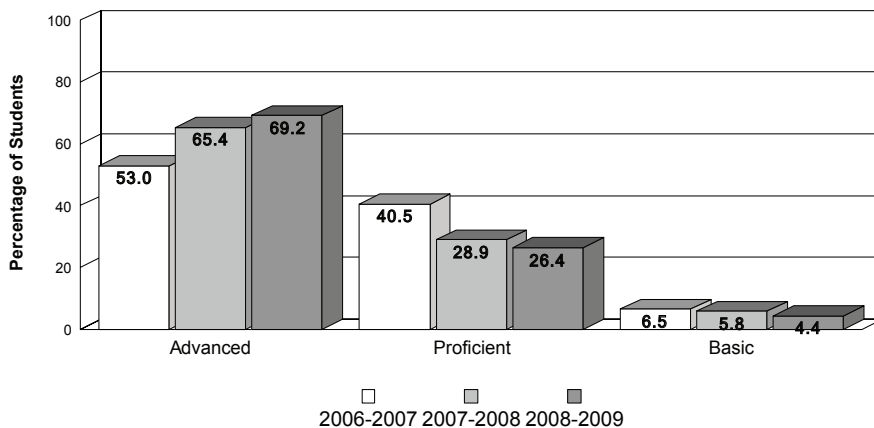


Achievement Data

Mount View Middle School MSA - Mathematics



MSA - Reading



MSA Standards - Percent Advanced/Proficient

School Year	MSDE AYP Standards		Howard Cty Standard	Mount View MS	
	Reading	Mathematics		Reading	Mathematics
2006-2007	66.3	50.0	70.0	93.50	86.70
2007-2008	71.1	57.2	70.0	94.20	90.90
2008-2009	75.9	64.3	70.0	95.60	93.10

Accomplishments

- MVMS Band received all superior ratings at District and State Festivals (2007, 2008, 2009) and received recognition at Music in the Parks (16 years)
- Orchestra received superior ratings at the District Festival (2007, 2008, 2009) and recognition at String Orchestra Division at Hershey Park (2003-2005)
- Service learning projects provide opportunities for students to be involved in the community by raising awareness to support The Maryland Zoo at Baltimore, Johns Hopkins Kids Helping Kids, the Wamunyu School in Kenya, Africa, Mount Pleasant Farm/Chesapeake Bay Watershed at the Howard County Conservancy, and Change a Lightbulb Project to conserve energy
- MVMS awarded Gold PBIS School by MSDE, 2007-2008
- Professional Development School in partnership with Loyola College to support education interns
- Technology Cohort School for HCPSS (2008-2009) to integrate technology with instruction

Special Programs

- Educational Partnerships include: Kenya Connect, Maryland Zoo at Baltimore, Johns Hopkins Kids Helping Kids, Howard Conservancy, and Parents as Partners
- 10-on-10 MVTV News Broadcast
- Skyflir Days and Talon Tokens for positive behavior
- Extracurricular activities include Literary Magazine, School Newspaper, Book Club, Drama Club, Debate Club, Environmental Club and Intramurals
- Student leadership activities include Student Government, Green Team, Spirit Team, Peer Mediators, and PRIDE Team
- Night of the Arts and PTA Reflections
- Developmental Assets Program, Enrichment Fair, and Project Wisdom
- Outdoor Education
- Howard County Spelling Bee
- Honor Roll, Perfect Attendance, High Five, and Student of the Month Recognitions
- Extended Day Programs in reading and math, Homework/Organization Clubs
- Interactive School Bulletin Board
- Co-Teaching and Peer Coaching