

Harper's Choice Middle School

PROFILE

2009-10

5450 Beaverkill Road • Columbia, MD 21044 • 410.313.6929 • <http://hcms.hcps.org>



Harper's Choice Middle School is a partnership of students, staff and parents – all committed to providing a high quality educational experience for our children. At Harper's Choice Middle, we actively cultivate a climate where respect, responsibility and relationships are modeled and valued. Our school community shares the vision of learning for a lifetime and believes that excellence includes high quality teaching, active parent involvement and successful student performance with academic and behavioral expectations. Our staff members strive to ensure an exceptional middle school experience by providing a challenging, rigorous and well-balanced academic, fine arts, and enrichment program that fosters a sense of self-discipline and compassion.

Our teachers recognize their responsibility to develop students who are competent with essential skills, able to use information to solve real-world problems and capable of working collaboratively in a rapidly changing and diverse world.

High Quality Teaching---Parental Involvement---Student Academic and Behavioral Excellence - First Step: NO EXCUSES

Susan P. Brown, Principal
Patricia Murray, Assistant Principal

Fast Facts

Facility opened - 1973

Additions/Renovations

1999 (R), 2000

School Capacity: 506

(This does not include additional capacity provided by 5 portable classrooms.)

Total Enrollment: 506

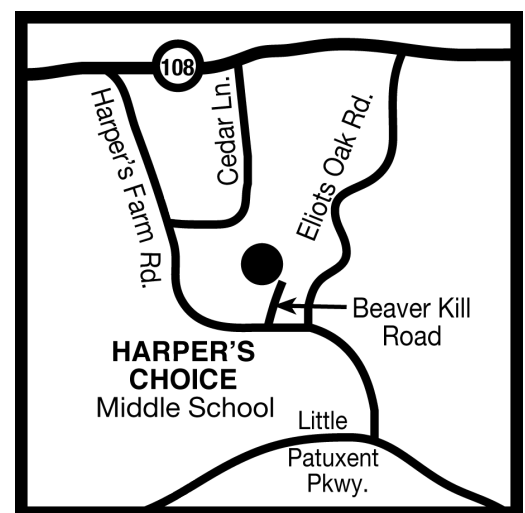
Ethnicity

White	34.1%
African American	42.9%
Asian	10.8%
Hispanic	9.6%
Native American	0.6%
Not Reported	2.2%

Students Receiving Special Services 2008-09

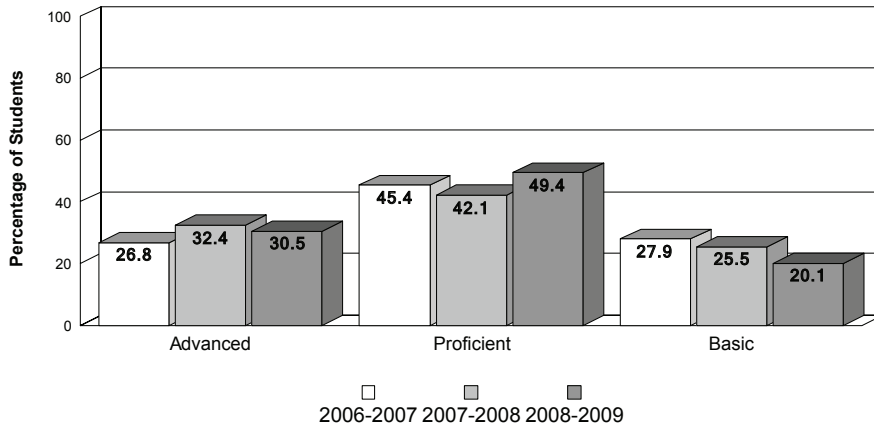
Ltd. English Proficient	4.6%
Free/Reduced Lunch	26.7%
Special Education	9.9%

PTA members: 480

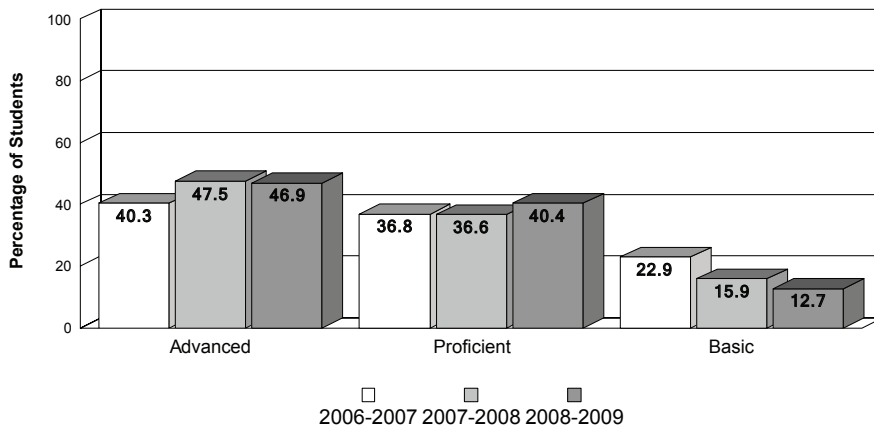


Achievement Data

Harper's Choice Middle School MSA - Mathematics



MSA - Reading



MSA Standards - Percent Advanced/Proficient

School Year	MSDE AYP Standards		Howard Cty Standard	Harper's Choice MS	
	Reading	Mathematics		Reading	Mathematics
2006-2007	66.3	50.0	70.0	77.10	72.10
2007-2008	71.1	57.2	70.0	84.10	74.50
2008-2009	75.9	64.3	70.0	87.30	79.90

Accomplishments

- Cited by the Washington Post (April, 2007) among the "Best 30 Middle Schools in the Washington, DC Area."
- Recipient of 2006 Maryland Center for Character Education School of the Year Award
- National PTA School of Excellence
- Extended Day/Year Programs
 - Bridges Grant for Academic Intervention
 - Cougar Time extended day program
 - Summer School Program for Academic Enrichment
- Regional Academic Life Skills Program
- Alternative Education Program
- Spell Read P.A.T. (Phonological Auditory Training) Program
- Gifted and Talented student enrichment activities: Research Design Class, Book Club, Debate Team, HCTV TV Production, Teen Leadership seminars.
- Partnership with Howard County Office on Aging, providing senior citizen mentors who work with students on reading skills.