

Ellicott Mills Middle School

PROFILE

2009-10

4445 Montgomery Road • Ellicott City, MD 21043 • 410.313.2839 • <http://emms.hcps.org>



Steeped in the historical legacy that embodies the Ellicott City area, Ellicott Mills Middle School blends a state-of-the-art facility with a faculty recognized for its vast experience and rich imagination. Our mission statement, "to ensure that each student meets or exceeds rigorous performance standards so they may actively participate in a diverse and changing world," speaks for itself.

In 2009, Ellicott Mills was recognized by the Maryland State Department of Education as a **Maryland Blue Ribbon School of Excellence** for accelerating student achievement and improved student performance on the Maryland State Assessments.

The staff at Ellicott Mills is committed to academic success and strives to promote a well-rounded experience for our students in order to prepare them for high school. We are committed to challenging them in all areas of the core curriculum as well as Related Arts. Each quarter, students are recognized for their achievements with an awards ceremony.

Students are also encouraged to participate in our diverse music program. In addition to Band, Chorus, and Orchestra, extracurricular groups including Jazz Band and Symphonic Band are available to those who are interested in furthering their skills. Ellicott Mills offers a variety of after school intramurals, which often include activities such as Basketball, Rocket Club, Crochet, and Homework Club. We sponsor an "Academic Extended Day" program to assist students in need of additional academic support.

The strong Parent Teacher Association at Ellicott Mills Middle School provides a number of in-school activities and programs for students and parents. EMMS is proud of our status as a "National PTA School of Excellence." We believe children are our community's most valued assets, and a child's achievement relies upon the partnership of home and school. Together, we can promote a nurturing and safe environment for all of our children.

Michael Goins, Principal
Nancy Eisenhuth, Assistant Principal

Fast Facts

Facility opened

EMMS originally opened in 1939.
A replacement building opened in 2001.

School Capacity: 662

(This does not include additional capacity provided by 2 portable classrooms.)

Total Enrollment: 699

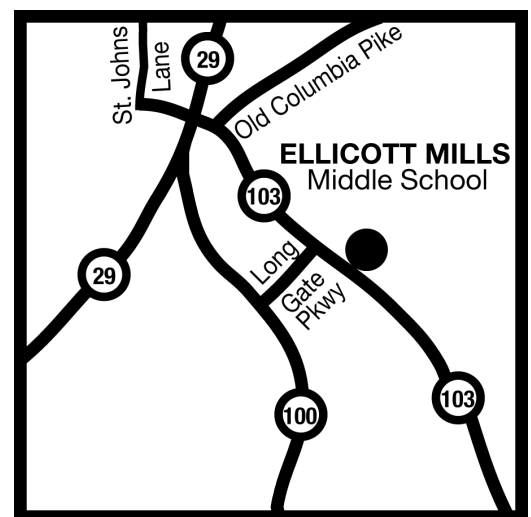
Ethnicity

White	60.2%
African American	13.2%
Asian	22.9%
Hispanic	1.9%
Native American	0.3%
Not Reported	1.6%

Students Receiving Special Services 2008-09

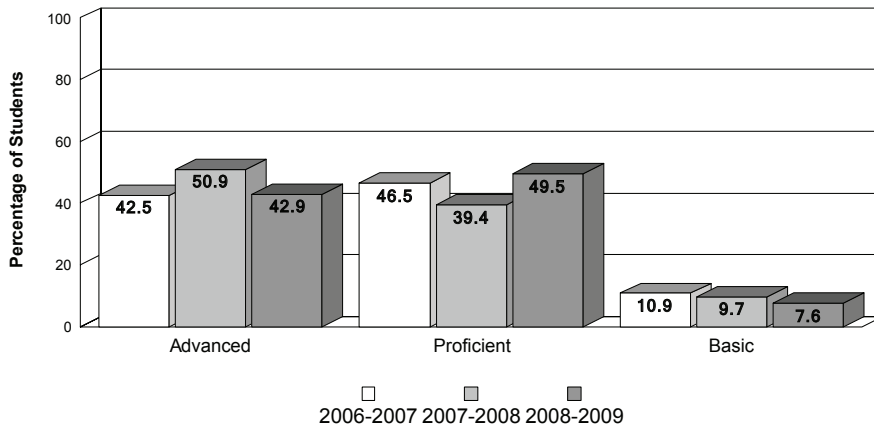
Ltd. English Proficient	1.5%
Free/Reduced Lunch	5.1%
Special Education	5.0%

PTA members: 311

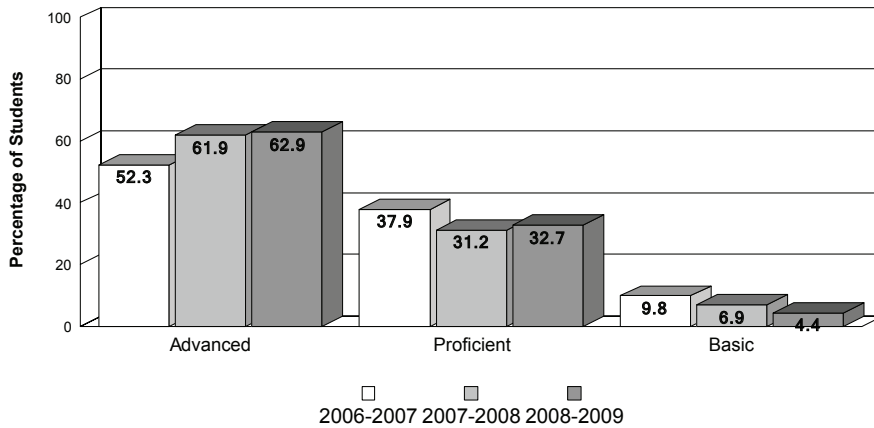


Achievement Data

Ellicott Mills Middle School MSA - Mathematics



MSA - Reading



MSA Standards - Percent Advanced/Proficient

School Year	MSDE AYP Standards		Howard Cty Standard	Ellicott Mills MS	
	Reading	Mathematics		Reading	Mathematics
2006-2007	66.3	50.0	70.0	90.20	89.10
2007-2008	71.1	57.2	70.0	93.10	90.30
2008-2009	75.9	64.3	70.0	95.60	92.40

Accomplishments

- 2009 Statewide Maryland History Day Competition winners – 2 students
- 2008-09 Fair Housing Poster Contest winner
- HCPSS Math, Science and Technology Fair Winners – 3 students
- 2008-09 Maryland Young Authors Contest winners/honorable mentions – 4 students
- Hoops and Volleyball for Heart student-sponsored fundraiser
- Governor's Citation: Superior Rating for School Maintenance, 2007-08
- National PTA School of Excellence, 2007-08
- Washington Post Agnes Meyers Outstanding Teacher Award Nominees - AnnMarie Varlotta, 2009-10
Christina Batelka, 2007-08
- First Year Educator Award Nominee – Lauren Vanderheyden, 2008-09
- NAACP Certificate of Excellence in Reading, Math, and Attendance, 2006-08
- MSDE MD Kids Care Katrina Campaign PRIDE Award, 2006-07
- Distinguished Middle School Technology Education Teacher – Dan Wood, 2006-07
- Maryland Art Education Association New Middle School Teacher of the Year – Michael Bracco, 2006-07
- Office Professional Award – Cindy Harrison, Nominee, 2006-07
- Maryland School Performance Program Award for Outstanding Performance on the Maryland School Assessments, 2003-07

Special Programs

- Educational Partnership with Towson University
- Mathematics Assistance Program
- Reading Assistance Program
 - SOAR to Success
 - SpellRead
- Symphonic Band
- Jazz Band
- Chorus