

# Elkridge Landing Middle School

## PROFILE

2007-08

7085 Montgomery Road • Elkridge, MD 21075 • 410.313.5040 • [www.hcpss.org/elms](http://www.hcpss.org/elms)



At Elkridge Landing Middle School, students, staff and parents work collaboratively to provide a safe, nurturing environment that is focused on academic excellence for all. Since the school opened in 1995, the staff has worked hard to develop a tradition of high academic standards and to provide enrichment activities that promote the development of healthy, productive and ethical citizens. In 2005, Elkridge Landing was recognized by the Maryland State Department of Education for outstanding achievement on the Maryland School Assessment.

Our talented staff recognizes the special needs of young adolescents and is dedicated to providing learning opportunities that foster the intellectual, social, emotional and physical development of our students. In addition, we encourage our students to think critically and creatively by providing challenging and rigorous academic classes, as well as a variety of related arts courses such as Art, Family and Consumer Sciences, Foreign Language, Health, Music, Physical Education and Technology Education.

Elkridge Landing is committed to having all students meet the rigorous performance standards established by our county, state and national governments. Also, to ensure a well-balanced educational experience for our students, we provide a number of extra-curricular activities such as the Homework Club, handbells, cooking, pottery, basketball, floor hockey, drama, volleyball, and flag football.

We are proud of our strong and supportive PTSA and the many business partnerships we have established. Community involvement is an important component of our school. On a daily basis, parents and community members can be found volunteering to help our students learn and grow. Our staff is very grateful for all of the support and encouragement we receive from the Elkridge community.

Together, the Elkridge Landing Middle School community – students, staff, parents and partners – are working to ensure the success of all our students. For more information about our school, please visit our website at [www.hcpss.org/elms](http://www.hcpss.org/elms).

Thomas M. Saunders, Principal  
Gina Stokes, Assistant Principal

### Fast Facts

**Facility opened:** 1995

**School Capacity:** 662

**Total Enrollment:** 626

#### Student Mobility 2006-07

4.9% Entrants

7% Withdrawals

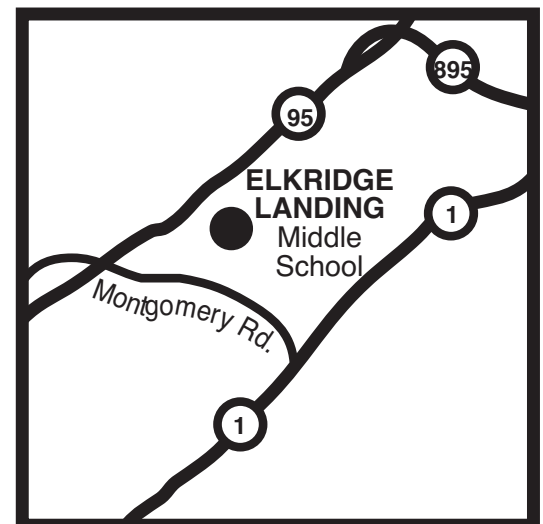
#### Ethnicity

White	64.6%
African American	20.0%
Asian	8.5%
Hispanic	5.1%
Native American	0.5%
Unidentified	1.3%

#### Students Receiving Special Services 2006-07

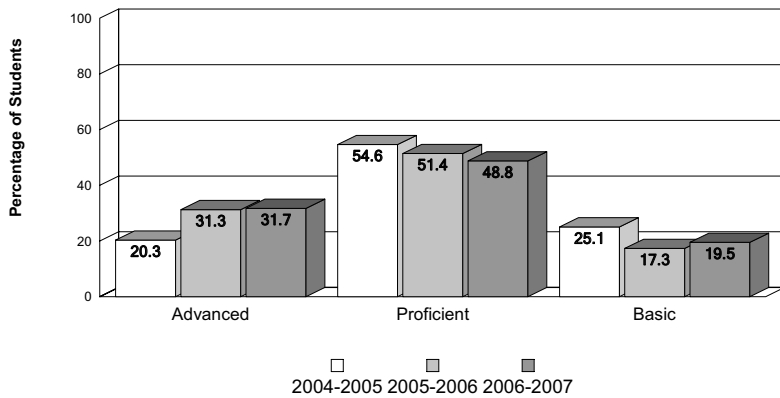
Ltd. English Proficient	3.1%
Free /Reduced Lunch	10.5%
Special Education	8.2%

**PTA members:** 320

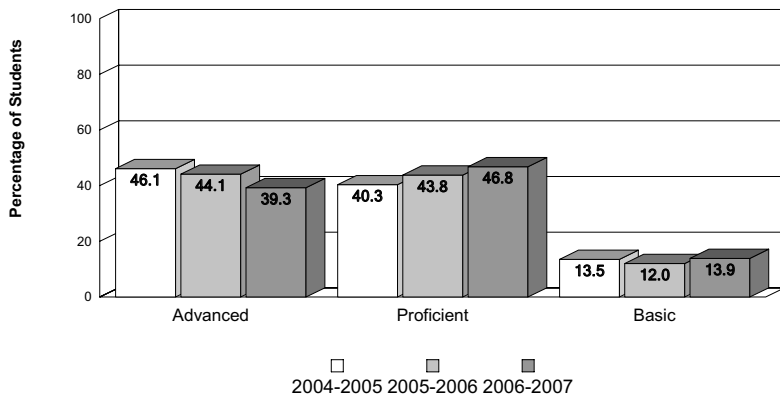


## Achievement Data

### Elkridge Landing Middle School MSA - Mathematics



### MSA - Reading



### MSA Standards - Percent Advanced/Proficient

School Year	MSDE AYP Standards		Howard Cty Standard	Elkridge Landing	
	Reading	Mathematics		Reading	Mathematics
2004-2005	56.70	35.80	70.00	86.4	74.9
2005-2006	61.50	42.90	70.00	86.9	81.9
2006-2007	66.30	50.00	70.00	86.1	80.4

### Algebra HSA Passrates



## Accomplishments

### 2006-2007

- Washington Post Distinguished Educational Leadership Award recipient
- Maryland School Assessment Recognition for outstanding achievement
- NAACP Recognition for outstanding student achievement on the MSA and in the area of student attendance
- Winner of the Howard County Junior Environthon Competition in Aquatics
- Three state and two national winners of the National History Day Competition
- Eight student winners at the Howard County Mathematics, Science and Technology Fair
- Orchestra, band and choral awards earned at the Music in the Parks Adjudication.
- Winner of the Northrop Grumman BWI Walk/Run "Largest Participation" Award

### 2005-2006

- Maryland School Assessment Recognition for outstanding achievement
- Council of Elders special recognition of 41 students for achievement on the MSA
- NAACP special award for achieving excellence in student attendance
- Winner of the Howard County Junior Environthon Competition in Wild Life
- Shimadzu Award for Excellence in Science, Mathematics and Technology Education
- Three state winners of the National History Day Competition
- Six student winners at county Mathematics, Science and Technology Fair
- Orchestra, band and choral awards earned at the Music in the Parks Adjudication
- Winner of the Northrop Grumman BWI Walk/Run "Largest Participation" Award
- It's Black-Ademic County Champion

### Business Partnerships

Elkridge Branch of Howard County Library  
Elkridge Furnace Inn  
Subway of Elkridge  
McDonald's of Elkridge  
The Walter's Art Gallery

## Special Programs

Academic Intervention Program, Alternative Education, Athletic Intramurals, Book Club, Drama, ESOL, Hand Bell Choir, Jazz Band, Literary Magazine, Math Olympiads, Memory Book, Mentorship Program, National Geography Bee, National History Day, Schoolwide Positive Behavior Programs (PAR+), Spell/Read Program, Student Government, Summer School, Television Program - "Newsbreak"