

Burleigh Manor Middle School

PROFILE

2009-10

4200 Centennial Lane • Ellicott City, MD 21042 • 410.313.2507 • <http://bmms.hcps.org>



Burleigh Manor Middle School, a 2006-07 Maryland Blue Ribbon School of Excellence and a 2007 National Blue Ribbon School of Excellence, ensures a successful middle school experience by providing a well-balanced academic, fine arts, and enrichment program for all of its students. At Burleigh Manor Middle School, we are extremely proud of our challenging, rigorous, and appropriate course of study and for all of the enrichment activities and opportunities we offer to our students. Students may participate in chorus and chamber choir, band and jazz band, orchestra, drama, mural design, athletic intramurals, website design, newsletter publication, memory book production, and TV studio production, as well as algebra, geometry, French, Spanish, and challenge reading. The Burleigh Manor music programs are renown throughout the county and the state of Maryland. They consistently rank highly in all competitions and perform every February at Tersiguel's Restaurant in Ellicott City.

Burleigh Manor Middle School promotes academic achievement and healthy development for every student by intentionally cultivating a thriving school culture for all members of the school community.

Our belief is that school should be a place to learn. It should be a safe place that allows us to try new things and to improve on the old; a place to make mistakes and learn from those experiences. Burleigh Manor strives to achieve these goals every day.

Claire Hafets, Principal
Lori Willoughby, Assistant Principal

Fast Facts

Facility opened - 1992

School Capacity: 662

Total Enrollment: 661

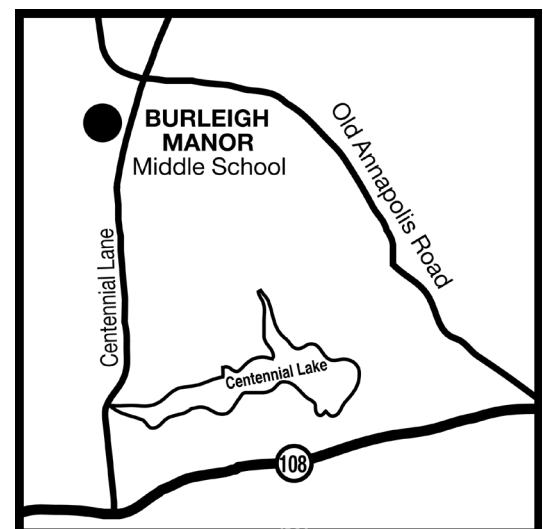
Ethnicity

White	53.8%
African American	7.4%
Asian	33.6%
Hispanic	3.3%
Native American	0.2%
Not Reported	1.7%

Students Receiving Special Services 2008-09

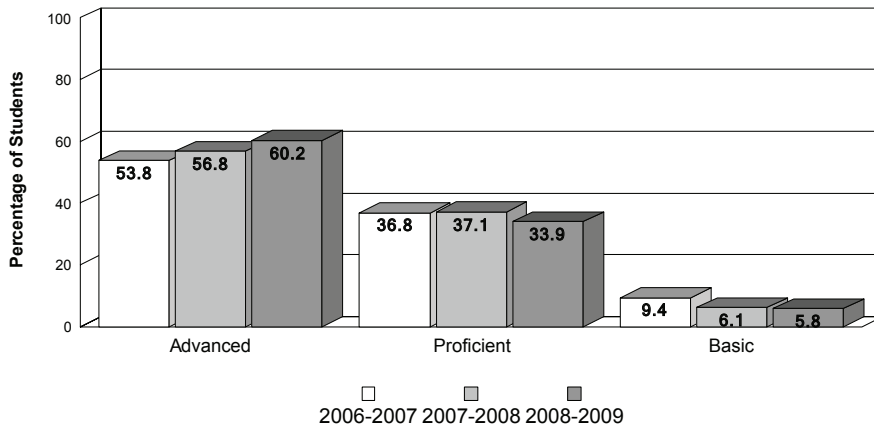
Ltd. English Proficient	2.9%
Free/Reduced Lunch	4.7%
Special Education	6.0%

PTA members: 525

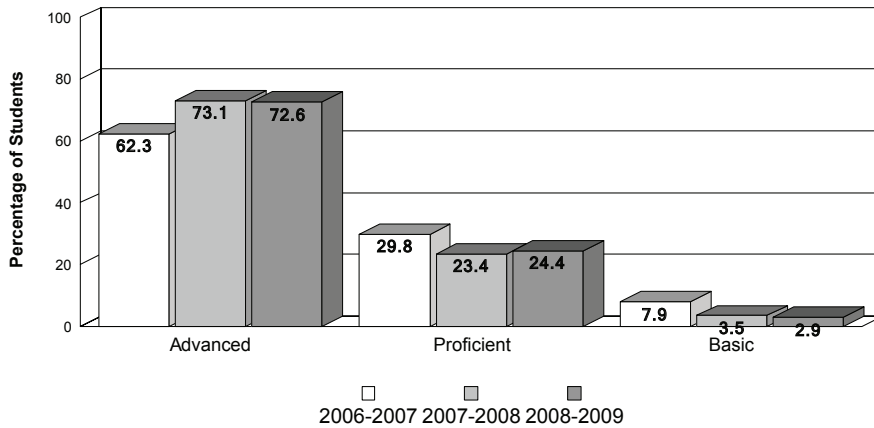


Achievement Data

Burleigh Manor Middle School MSA - Mathematics



MSA - Reading



MSA Standards - Percent Advanced/Proficient

School Year	MSDE AYP Standards		Howard Cty Standard	Burleigh Manor MS	
	Reading	Mathematics		Reading	Mathematics
2006-2007	66.3	50.0	70.0	92.10	90.60
2007-2008	71.1	57.2	70.0	96.50	93.90
2008-2009	75.9	64.3	70.0	97.10	94.20

Special Programs

- PTA Healthy Lifestyles
- Television Production of Bobcat News
- Student Council
- Bioretention, Trout Release, Empty Bowls and Chesapeake Bay Studies Service Learning Projects
- Student Ambassador
- Homework Club and Book Club
- STEM

Accomplishments

School Recognition:

- National Blue Ribbon School, 2007
- Maryland State Blue Ribbon School, 2006
- Highest Percentage of Students Scoring Advanced on MSA, Baltimore Sun, 2007
- Silver Fellow on Donor Honor Roll of American Lung Association
- Youth Service Award, American Lung Assn.
- Wind Ensemble, Chamber Choir, and Orchestra received many 1st place and Judges' Choice Awards at Music in the Parks National Music Festivals
- Howard County Summer Reading Program Participation, First Place, 2008, 2009

Student Recognition:

- State Google Contest Winner
- Runner-up, 2006 County Spelling Bee
- Howard County Library - Highest Percentage of middle school students involved in summer reading program
- 1st, 2nd and 3rd Place middle school winners - MADD Poster Contest
- Winner Howard Co. Multimedia Contest
- Winner of MICCA (statewide) Multimedia Contest and Art Contest
- Many students selected each year for All State Band, Orchestra and Choir
- Certificate of Achievement – Music Teachers Association International
- October Computer Learning Month contest winners every year
- 3 Champions of Courage essay competition winners, 2009

Teacher Recognition:

- Tony Miceli, Advisor of the Year, 2009
- Sherry Jankiewicz, Career Art Teacher of the Year, 2009
- Jeff Brodie, Jaime Hanafourde, Brian McDonald, and Janine Powers - Who's Who Among Teachers
- Kathleen Tunney, MICCA Grant
- Earnestine Bronson, named Outstanding Special Educator by Special Education Parents' Advisory Committee
- David Reck, Chamber of Commerce Teacher of the Year
- Special Education Department, SECAC Recognition, 2007
- Aaron Gray, International Technology Education Association, Curriculum Specialist, HCPSS curriculum: Engineering by Design
- Ellen Doring, Choir Director of the Howard County GT Choir