

Bonnie Branch Middle School

PROFILE

2009-10

4979 Ilchester Road • Ellicott City, MD 21043 • 410.313.2580 • <http://bbms.hcpss.org>



Bonnie Branch Middle School is focused on being a beacon for academic success and community involvement. Our school nurtures a safe and caring learning community, ensures high academic standards, and welcomes parent and community involvement.

As we focus on achievement, we strive to provide our students with opportunities for learning. It is expected that our students will perform successfully on curriculum and assessments, but it is critical that they be responsible students committed to their own learning potential.

Programs are in place to support student achievement including after-school intervention programs, intramurals, and student recognition for outstanding performance. Our PTA plays an integral role in school activities, and parents are valued as key players in every child's academic program.

Students are learning to be community citizens, with a daily news broadcast, performing musical arts, and enrichment activities and projects in addition to student service learning projects that benefit our community. The Bonnie Branch Middle School mission focuses on the 3 R's for success: readiness, responsibility, and respect. Relationships and learning provide the foundation on which practices, traditions, and expectations are built. Navigating success together with our staff, students and parents will ensure our course for the school year.

Carolyn Jameson, Principal
Nan Brown, Assistant Principal

Fast Facts

Facility opened - 1999

School Capacity: 662
(This does not include additional capacity provided by a portable classroom.)

Total Enrollment: 687

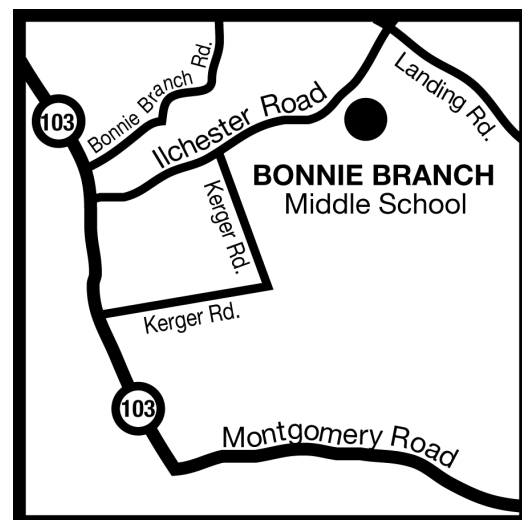
Ethnicity

White	59.2%
African American	26.6%
Asian	9.8%
Hispanic	3.3%
Native American	0.1%
Not Reported	0.9%

Students Receiving Special Services 2008-09

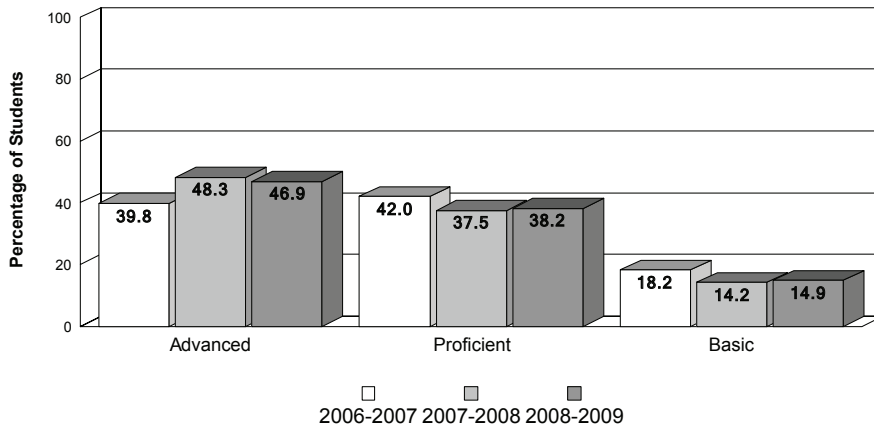
Ltd. English Proficient	2.8%
Free/Reduced Lunch	10.0%
Special Education	9.2%

PTA members: 300

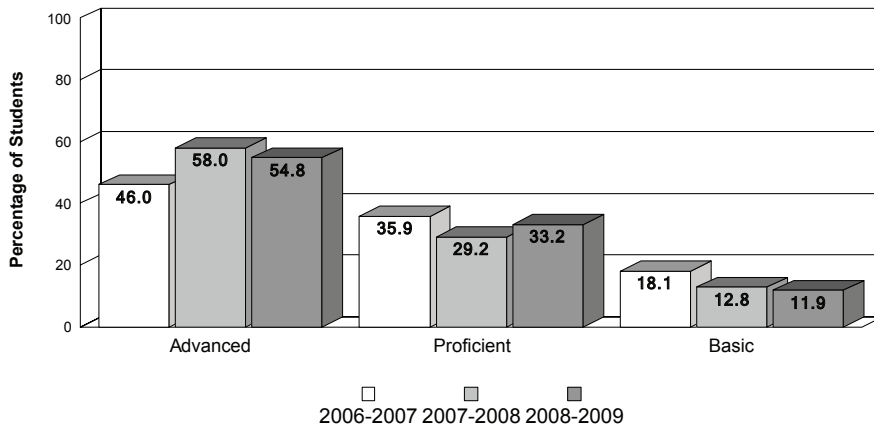


Achievement Data

Bonnie Branch Middle School MSA - Mathematics



MSA - Reading



MSA Standards - Percent Advanced/Proficient

School Year	MSDE AYP Standards		Howard Cty Standard	Bonnie Branch MS	
	Reading	Mathematics		Reading	Mathematics
2006-2007	66.3	50.0	70.0	81.90	81.80
2007-2008	71.1	57.2	70.0	87.20	85.80
2008-2009	75.9	64.3	70.0	88.10	85.10

Accomplishments

- Maryland School Performance Recognition – 2004, '05, '06, '07
- African American Advanced Student Performance Recognition - 2004, '05, '06, '07
- Student leadership through WEB (Welcome Everybody) Ambassadors, Student Team Leaders and Safe School Advisory Committee, and Student Government (with School Improvement Team participation)
- Positive Behavior Program with Scholar Dollars and the Shark Store
- Annual School Play
- Monthly Students of the Month, Quarterly Honor Roll, and Annual Presidential Awards
- Staff meets Highly Qualified standards
- Annual Outdoor Education program
- Student participation in Howard County GT Orchestra, Honors Band, GT Chorus, and Maryland All-State Band and Orchestra
- PBIS Green Ribbon School Award
- Student After-School Intramurals
- Student 'Green Team' to encourage recycling and study building energy use
- S.T.E.M. After-School program – Science, Technology, Engineering, Mathematics
- Student-led Tennis Shoe Drive, which collected over 500 pairs of tennis shoes to recycle and donate
- School winner of the Jack Kent Cooke Young Scholars Program Scholarship, which provides a mentor and financial support through college
- Black History Poetry Night
- Black Saga After-School Program
- Field trip experiences, which are curriculum-based, include NASA Goddard Space-Flight Center, Newseum, Genesee Valley
- Student participation in Student Service Learning, specifically Trick-or-Treat for UNICEF
- "Building a House of Knowledge, One Book at a Time" Reading Initiative
- School Debate Team won the Howard County Debate Competition
- History Day students won second place in county competition and competed at state level
- Student in G/T Instructional Leadership Seminar coordinated school-wide "Dare Not To Swear" Challenge to encourage proper language, which has been adopted by many other Howard County schools