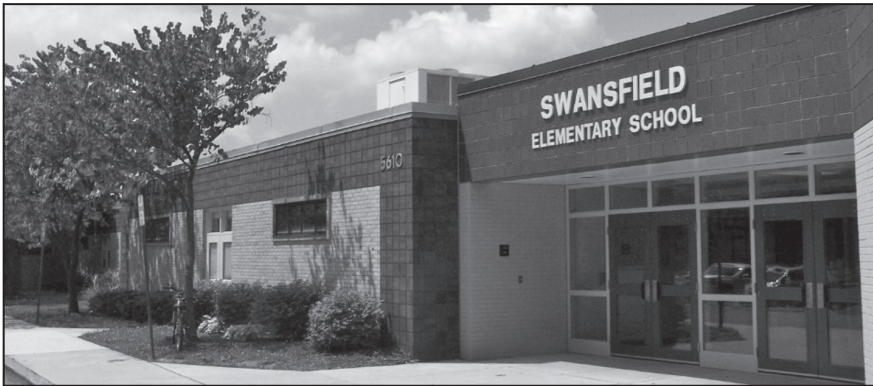


# Swansfield Elementary School

## PROFILE

2009-10

5610 Cedar Lane • Columbia, MD 21044 • 410.313.6907 • <http://ses.hcpss.org/>



### Swansfield Elementary...EXCELLENCE STARTS HERE!

Swansfield Elementary is a community school with students, staff, and parents all part of our "Swansfield Family." Families mingle together and are greeted by the staff as they drop off or pick up children in the morning or afternoon. We are proud of the diversity (our families represent 28 countries) that exists within our Swansfield community. We believe this makes Swansfield a unique and wonderful school!

Our highly qualified staff is dedicated to the success of our students. We are committed to facilitating each of our students to reach his/her potential! Our ability to "know each learner" is enabled by daily collaboration between staff. We work to provide relevant and engaging learning opportunities that motivate our students. Swansfield continues to meet the Maryland State Department of Education criteria for Adequate Yearly Progress (AYP) on the Maryland State Assessments. Our quarterly data conversations between administration and teachers ensure that we will continue to meet and exceed state standards.

Our "Be in the Spotlight" Program encourages students to follow our school-wide expectations of Being Respectful, Being Safe, and Being Prepared. Students are rewarded with spotlight certificates when caught doing these things. This process has helped our school become fully committed to being a Positive Behavioral Incentive System (PBIS) school. Each morning, students are presented with a Caring Message to reinforce the monthly character education trait. Teachers then lead discussions and identify ways in which our students can be caring people within both our school and the community.

The Swansfield PTA is a dynamic organization that is continually providing community support through a number of initiatives including parent education programs, family fun events, holiday assistance, and book and clothing drives! They work as a true partnership with the school to support both our academic and social goals. We welcome everyone to our warm and caring school. Our doors are always open!

Molly Ketterer, Principal  
Lisa Ciarapica, Assistant Principal

### Fast Facts

**Facility opened - 1972**

#### Additions/Renovations

1988 (A), 1998 (R), 2008 (A)

#### School Capacity: 528

*(This does not include additional capacity provided by 4 portable classrooms.)*

**Total Enrollment (PreK-5): 505**

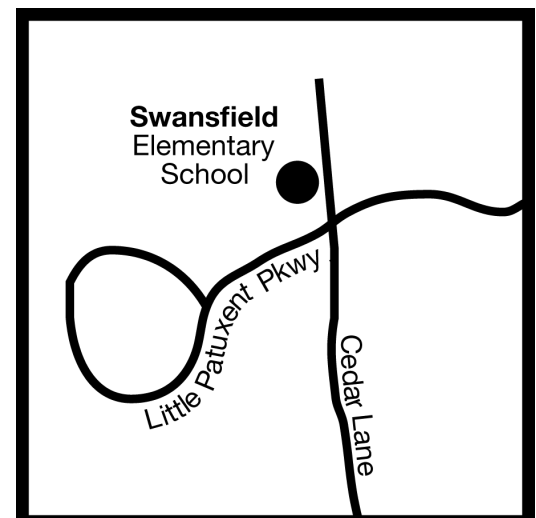
#### Ethnicity

White	25.0%
African American	42.0%
Asian	10.1%
Hispanic	11.1%
Native American	0.8%
Not Reported	11.1%

#### Students Receiving Special Services 2008-09

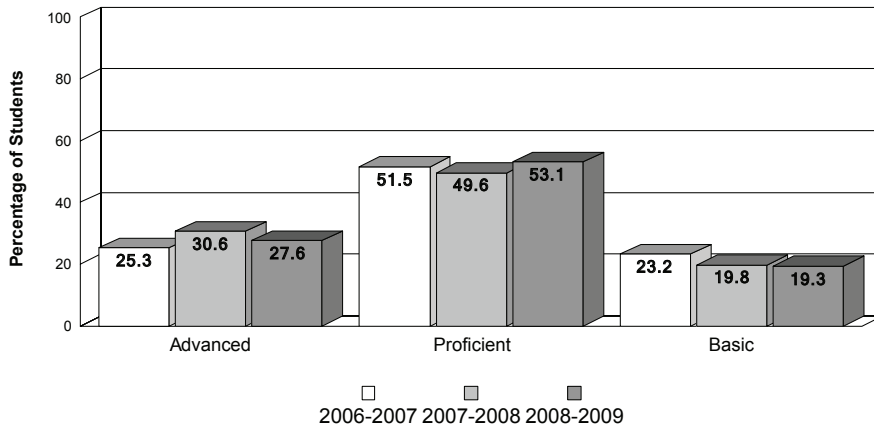
Title I	26.5%
Ltd. English Proficient	6.2%
Free/Reduced Lunch	35.8%
Special Education	8.0%

**PTA members: 261**

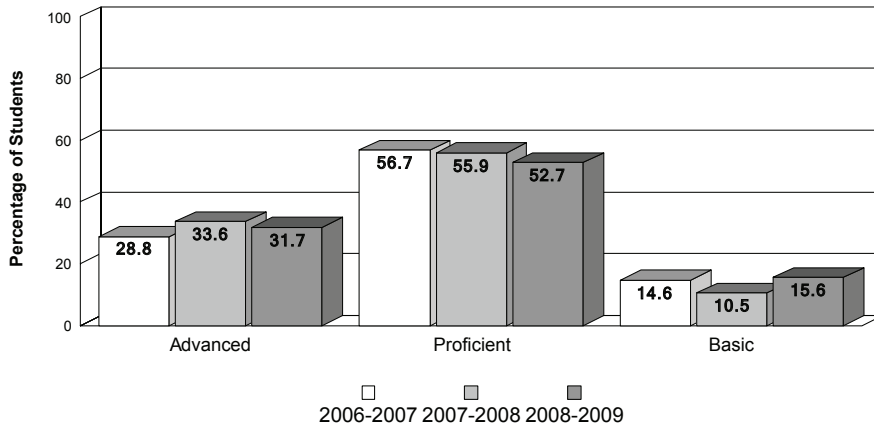


## Achievement Data

### Swansfield Elementary School MSA - Mathematics



### MSA - Reading



### MSA Standards - Percent Advanced/Proficient

School Year	MSDE AYP Standards		Howard Cty Standard	Swansfield ES	
	Reading	Mathematics		Reading	Mathematics
2006-2007	67.2	63.9	70.0	<b>85.40</b>	<b>76.80</b>
2007-2008	71.8	69.1	70.0	<b>89.50</b>	<b>80.20</b>
2008-2009	76.5	74.2	70.0	<b>84.40</b>	<b>80.70</b>

## Accomplishments

### 2009

- Began BRIDGES to Success Program for Extended day Learning Opportunities funded by the 21st Century Community Learning Centers
- Met AYP on MSA for all student groups

### 2008

- Met Adequate Yearly Progress (AYP) on the Maryland State Assessment (MSA) for all student groups (several years in a row)
- Governor's Citation for Superior Maintenance
- Monica D'Angelo was recognized as both the Columbia Foundation Teacher of the Year and the Maryland Council of Teachers of Mathematics Elementary Teacher of the Year

### 2007

- The first Ben Carson Reading Room in Howard County was opened.

## Special Programs

- Alternative Education Program
- Bilingual Community Liaison
- BRIDGES to Success Program for Extended day Learning
- Business Partnerships: 7
- Before and After School Programs - Math and Reading Tutoring
- PBIS School focusing on reinforcing Positive Behaviors
- Pre-Kindergarten
- Professional Development School with Johns Hopkins University
- Reading and Math Support Teachers provide ongoing professional development for staff within the school day
- Reading Recovery: one-on-one reading intervention for First graders
- Title 1 Funded School
- Title 1 Resource Teachers Focusing on Reading and Math Acceleration