

Rockburn Elementary School

PROFILE

2009-10

6145 Montgomery Road • Elkridge, MD 21075 • 410.313.5030 • <http://res.hcpss.org/>



Rockburn Elementary School is nestled adjacent to the park that shares its name. Since opening in 1993, the Rockburn school community has believed in making a difference in the lives of children and families. Collaboration, communication, and caring describe our core values today. Every child is important at Rockburn. The collaboration of staff, students and families make Rockburn a great place to learn and grow.

Rockburn is a Professional Development School with Towson University. Student interns work in cooperation with teacher mentors as they strive to develop as professionals. Our school is focused on providing professional development opportunities for all staff and interns throughout the year.

Our Parent Teacher Association is strong and supportive. Parent volunteers are welcomed into the classrooms and work throughout the school. The PTA meets monthly to plan events for students, staff, and families. Family events include our Secret Shop, Bingo Night, Safety Expo, and Spring Carnival. Parents are true partners in the education of the children at Rockburn.

Our students are expected to follow the 3 R's of Rockburn: Respectful, Responsible, and Ready. As a PBIS School, we focus on Positive Behavioral Interventions and Supports to assist all students to meet with success. Our staff members can be found throughout the building providing support for our Rockburn values, leading by example and providing opportunities for students to experience what we value as a school community.

Our staff is composed of energetic, caring professionals who are willing to go above and beyond the call of duty for our students. Our focus is on bringing out the best in each child by learning about them as unique individuals and teaching them to take care of themselves as they learn to care for each other.

Rockburn is a school filled with fun, friends, and a focus on learning. We are excited and proud to educate the leaders of tomorrow.

Lauren Bauer, Principal
Pat Shifflett, Assistant Principal

Fast Facts

Facility opened - 1993

Additions/Renovations
2004 (A), 2007

School Capacity: 667
(This does not include additional capacity provided by a portable classroom.)

Total Enrollment (PreK-5): 731

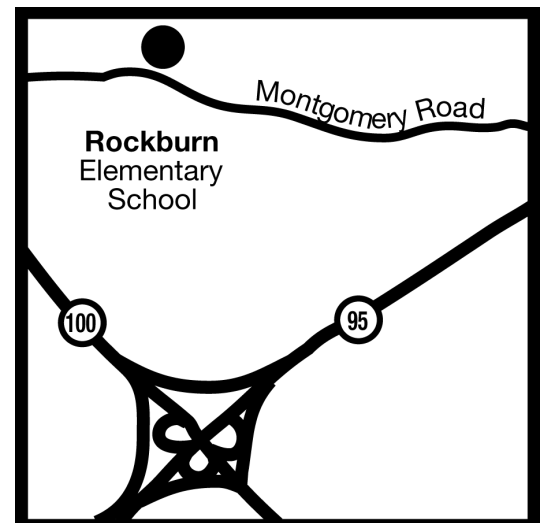
Ethnicity

White	66.5%
African American	10.9%
Asian	12.6%
Hispanic	3.8%
Native American	1.2%
Not Reported	4.9%

Students Receiving Special Services 2008-09

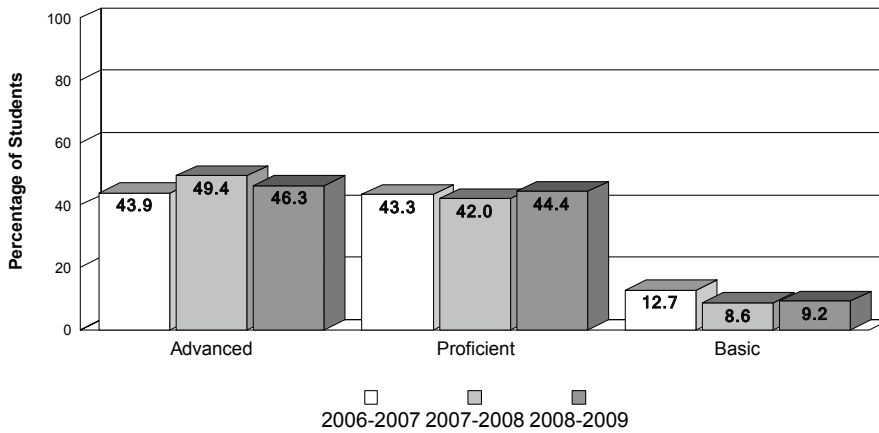
Title I	0%
Ltd. English Proficient	1.7%
Free/Reduced Lunch	5.8%
Special Education	7.9%

PTA members: 494

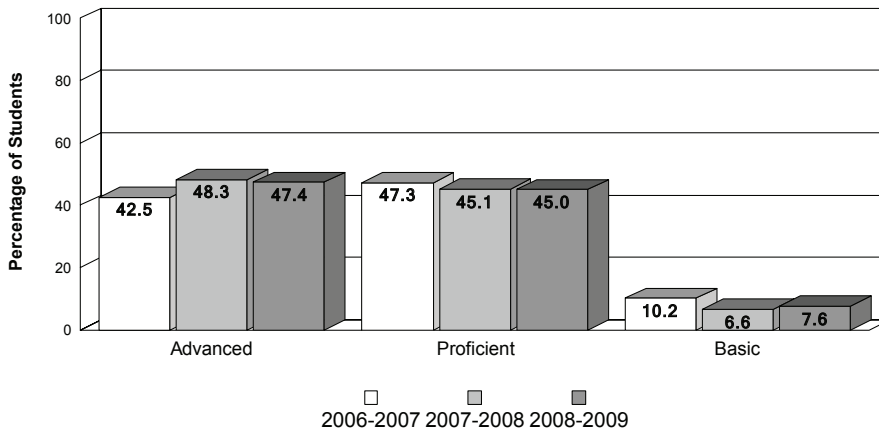


Achievement Data

Rockburn Elementary School MSA - Mathematics



MSA - Reading



MSA Standards - Percent Advanced/Proficient

School Year	MSDE AYP Standards		Howard Cty Standard	Rockburn ES	
	Reading	Mathematics		Reading	Mathematics
2006-2007	67.2	63.9	70.0	89.80	87.30
2007-2008	71.8	69.1	70.0	93.40	91.40
2008-2009	76.5	74.2	70.0	92.40	90.80

Accomplishments

- Pat Shifflett, Assistant Principal, was named MAESP Assistant Principal of the Year, 2009
- PBIS Gold Award 2009
- PBIS Maryland Exemplar School, 2007
- National PTA Parent Involvement School of Excellence

Special Programs

- Regional Early Childhood Center (RECC)
- Professional Development School - Towson University
- Educational Partnerships: 7