

# Longfellow Elementary School

## PROFILE

2009-10

5470 Hesperus Drive • Columbia, MD 21044 • 410.313.6879 • <http://lfes.hcps.org>



Longfellow Elementary's motto is "Where Soaring Eagles Dare to Dream." Our school community, which includes staff, students, parents, community members and business partners, celebrates diversity and emphasizes collaboration among all. Our school takes great pride in our diverse student body and rich school history. Longfellow was one of the first schools built in Columbia, and continues to be a school where students are eager to learn each and every day. Our students know that a committed and dedicated staff awaits them to guide and nurture them to great academic and social heights. This warm and welcoming atmosphere encourages our parents and community to participate in all aspects of our school program. Our very active PTA provides cultural arts programs, charity drives, and volunteers within our classrooms on a regular basis.

Longfellow has been recognized as a PBIS (Positive Behavioral Intervention System) Exemplar School. We are very proud to be one of the few Howard County Schools to receive such coveted recognition. This system reinforces the positives in each student and encourages responsibility, respect and safety. Our PBIS program has helped us provide our students with a warm nurturing environment, and challenges our students to be the very best they can be.

Longfellow has much to offer its students and community. We have been recognized on two separate occasions by the Maryland Department of Education for achievement on the Maryland State Assessment. Longfellow is also able to offer challenging instructional opportunities through many programs: the Regional Early Childhood Center with Multiple Intense Needs classes for early intervention, Title I Intervention Services in grades K-5, after-school tutoring in reading and mathematics, and Academic Intervention Summer School. Additionally, we have an incredible Gifted and Talented Program, which has been nationally honored for many years.

Through academic excellence, character education, and positive behavioral supports, Longfellow has truly become a school where each and every one of us is committed to saying, "Excellence starts with me!"

Cathy Nowack, Principal  
Laurel Marsh, Assistant Principal

### Fast Facts

**Facility opened** - 1970

**Additions/Renovations**

1986 (R), 1994 (A), 2008 (A)

**School Capacity:** 418

*(This does not include additional capacity provided by 2 portable classrooms.)*

**Total Enrollment (PreK-5):** 417

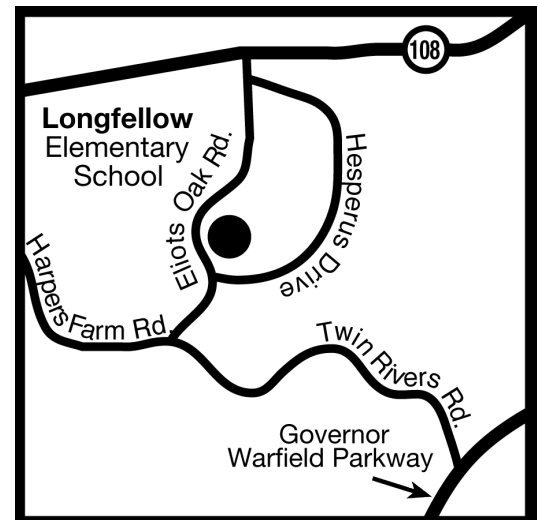
**Ethnicity**

White	35.0%
African American	38.6%
Asian	9.1%
Hispanic	11.5%
Native American	0.2%
Not Reported	5.5%

**Students Receiving Special Services 2008-09**

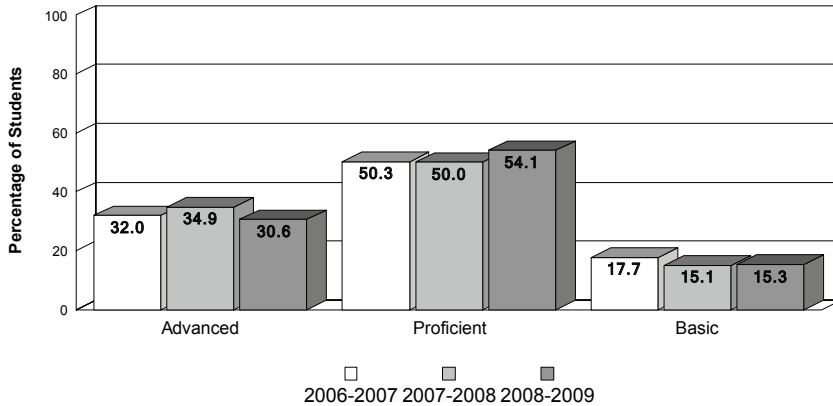
Title I	24.4%
Ltd. English Proficient	4.6%
Free/Reduced Lunch	28.7%
Special Education	8.1%

**PTA members:** 155

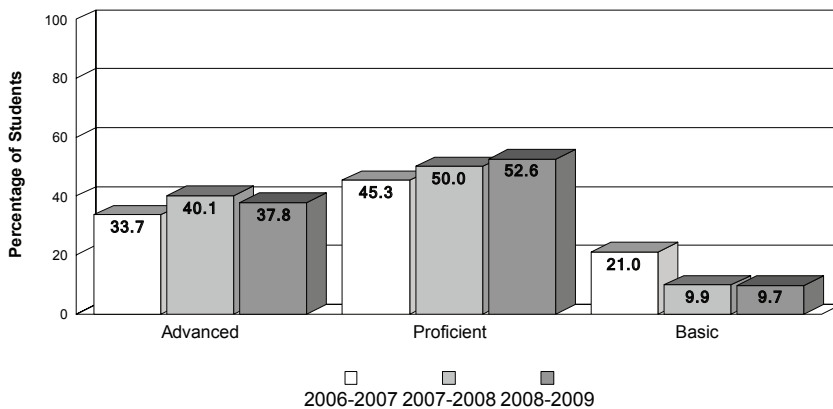


## Achievement Data

### Longfellow Elementary School MSA - Mathematics



### MSA - Reading



### MSA Standards - Percent Advanced/Proficient

School Year	MSDE AYP Standards		Howard Cty Standard	Longfellow ES	
	Reading	Mathematics		Reading	Mathematics
2006-2007	67.2	63.9	70.0	<b>79.00</b>	<b>82.30</b>
2007-2008	71.8	69.1	70.0	<b>90.10</b>	<b>84.90</b>
2008-2009	76.5	74.2	70.0	<b>90.30</b>	<b>84.70</b>

## Accomplishments

### 2009

- PBIS State Exemplar Gold Status
- Green School Certification
- Recipient of STEM Grant
- Hosted Educators from the London Borough of Havering, England
- Interwrite Technology Contest Finalist

### 2008

- Department of Special Education Work Study Program
- NAACP Certificate of Excellence
- 2008 Council of Elders of the Black Community of Howard County MSA Recognition
- Professional Development School with Towson University

### 2007

- NAACP Certificate of Excellence
- PBIS Maryland State Exemplar School
- Ben Carson Scholar Student Recipient
- Professional Development School with Towson University

### 2006

- Black Saga Statewide Competition
- Council of Elders of the Black Community of Howard County MSA Recognition
- Howard County Children's Chorus
- Howard County Spelling Bee
- Math Olympiads

## Special Programs

- Artist in Residency Programs
- Battle of the Books
- Black Saga Competition
- Book Birds Club
- Cultural Diversity Student Committee
- Eagle Challenge Reading Incentive Program
- Eagle Club Mentoring Program
- Guidance Initiatives toward Drug Awareness, Character Education, and MINC Preschool Classes
- Positive Peer Interaction
- PTA Afterschool Programs
- Reading Recovery
- Spelling Bee