

# Jeffers Hill Elementary School

## PROFILE

2009-10

6000 Tamar Drive • Columbia, MD 21045 • 410.313.6872 • <http://jhес.hcpss.org/>



### Mission Statement

*The Jeffers Hill Elementary School Community will create an environment of excellence in teaching and learning where students reach high academic standards and learn to be responsible citizens.*

Jeffers Hill Elementary School opened its doors in February 1974. The staff and community are proud of the rich academic and cultural heritage of JHES. Jeffers Hill continues to be a school where students are eager to enter the building each morning and former students and staff proudly return to visit. The warm and welcoming atmosphere greets visitors and encourages parent/community participation in all aspects of the school.

The Jeffers Hill staff and community are committed to ensuring that all our students receive rigorous instruction and meet state and local standards. We are very pleased with the progress that our school has made over the years and we will continue to work hard to ensure that this pattern of "excellence in teaching and learning" continues.

Jeffers Hill Elementary is dedicated to ensuring a safe and nurturing school environment. We are very proud of our school's PBIS (Positive Behavioral Interventions and Supports) system for creating a safer and more effective school. PBIS is an approach that enhances the capacity of schools to educate all children by developing research-based, school wide, and classroom discipline systems. The process focuses on improving our ability to teach and support positive behavior for all students. This, in part, is accomplished by building positive relationships with our students and rewarding them when they meet the expectations. Our students know that they are expected to be productive, accountable, willing to respect, and safe!

Our staff strives each day to make sure that everyone feels welcome at JHES. We are proud of the collaborative relationships between all members of the school community – staff, parents, students, and business partners. We work together to make JHES "better tomorrow than it is today." The staff and students look forward to many more years of success at JHES!

Pamela J. Butler, Principal  
Cathleen Lopez, Assistant Principal

### Fast Facts

**Facility opened** - 1974

**Additions/Renovations**  
1998 (R), 1999 (R)

**School Capacity: 421**  
(This does not include additional capacity provided by 2 portable classrooms.)

**Total Enrollment (K-5):** 383

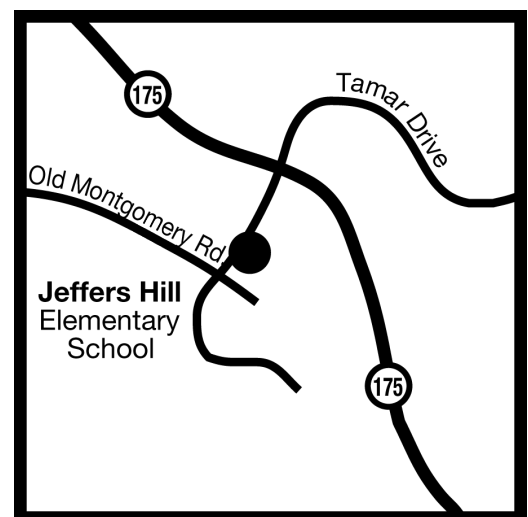
#### Ethnicity

White	25.6%
African American	46.2%
Asian	17.2%
Hispanic	8.9%
Native American	0.3%
Not Reported	1.8%

#### Students Receiving Special Services 2008-09

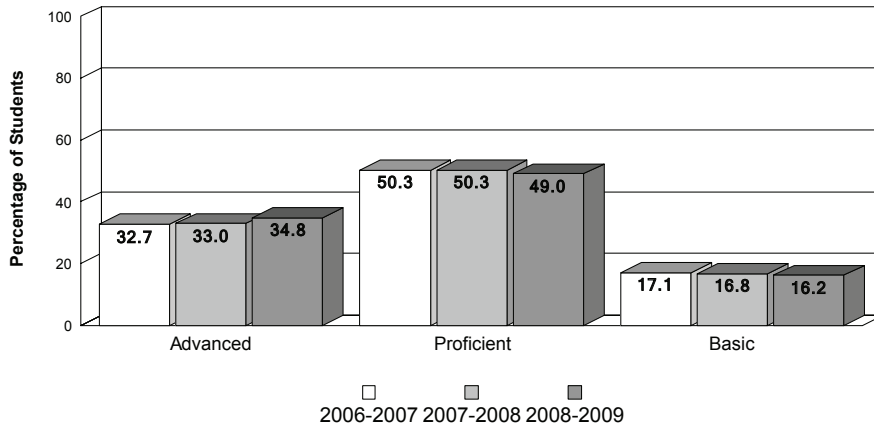
Title I	0%
Ltd. English Proficient	7.9%
Free/Reduced Lunch	22.5%
Special Education	7.7%

**PTA members:** 200

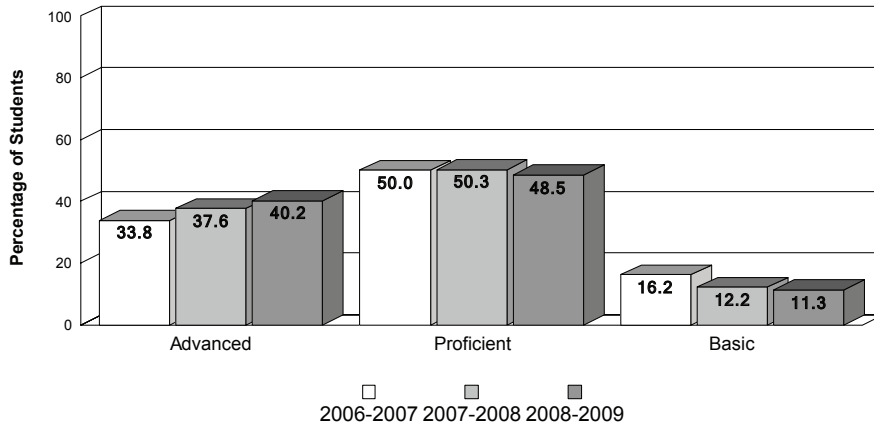


## Achievement Data

### Jeffers Hill Elementary School MSA - Mathematics



### MSA - Reading



### MSA Standards - Percent Advanced/Proficient

School Year	MSDE AYP Standards		Howard Cty Standard	Jeffers Hill ES	
	Reading	Mathematics		Reading	Mathematics
2006-2007	67.2	63.9	70.0	<b>83.80</b>	<b>82.90</b>
2007-2008	71.8	69.1	70.0	<b>87.80</b>	<b>83.20</b>
2008-2009	76.5	74.2	70.0	<b>88.70</b>	<b>83.80</b>

## Accomplishments

### 2009

- PBIS Maryland "GOLD Banner Award" - highest designation
- MESA Competition Award Winners - 1st and 2nd place
- DQIE Co-Teaching Cadre Grant
- Omega Psi Phi Mentoring Program Partnership
- Towson University Professional Development School (PDS)

### 2008

- PBIS Maryland "Banner Award" of Excellence
- DQIE Co-Teaching Cadre Grant
- Washington Wizards "Gilbert Scores for Schools" Recipient
- Towson University Professional Development School (ongoing)
- Black Saga Competition Certificate of Appreciation (3 years in a row)
- NAACP Certificate of Excellence

### 2007

- PBIS Maryland "Green Ribbon School" Award
- Washington Wizards "Gilbert Scores for Schools" Recipient
- Artist in Residency Grant - Poetry
- NAACP Certificate of Excellence - Attendance, Grade 4 Reading

## Special Programs

- New Vision Martial Arts Partnership - focus on fitness
- Omega Psi Phi Program for African American males
- PBIS Project - Positive Behavioral Intervention Strategies
- Drama (After School) Program - Schoolhouse Theatre
- FASTT Math Intervention Program
- Reading Recovery Program - one-to-one reading intervention for first graders
- Professional Development School (PDS) partnership with Towson University
- School-wide "Character Kids" program and Bully proofing initiative
- MESA ~ Mathematics, Engineering, Science Achievement
- Tessellations Club for African American Males