

# Hollifield Station Elementary School

## PROFILE

2009-10

8701 Stonehouse Drive • Ellicott City, MD 21043 • 410.313.2550 • <http://hses.hcps.org/>



Hollifield Station Elementary opened its doors in 1997. In that time, we have developed a reputation for excellence that the staff and community work hard to maintain. We believe that assisting each child to achieve at levels commensurate with his or her potential is probably the most difficult challenge we as professional educators must face. Therefore, we subscribe to the belief that it is only through the sustained partnership between home and school that this challenge can be met. We believe strongly that parents who take an active role in their child's day-to-day educational journey make an investment for a lifetime of success.

Hollifield Station Elementary has one of the most diverse student populations in Howard County. We have a Regional Early Childhood Center to meet the special needs of children from birth to age five and their families. The RECC offers services to children birth through age 2 in the Early Beginnings Program, while children ages 3-5 attend preschool and kindergarten classes designed to meet their special needs.

We are proud to be in the ninth year of a partnership with Towson University. Hollifield Station, along with St. John's Lane and Waverly elementary schools, forms a triad site as a Professional Development School (PDS) in partnership with Towson University. Approximately 20 college interns spend a full school year in our schools as degree candidates in elementary education and special education. The PDS is designed to promote learning and enhance the instructional climate of our school while supporting both the professional growth of our teaching staff and the development of teaching interns from the university.

Helping Students Excel and Succeed is our goal. Our mission at Hollifield Station Elementary is to provide a nurturing learning environment that fosters academic excellence and promotes responsible attitudes and behaviors within a diverse community. Our vision is to build and respect relationships and encourage collaboration between all members within our learning community.

Lisa J. Booth, Principal  
Gwendolyn P. Jones, Assistant Principal

### Fast Facts

**Facility opened** - 1997

**Additions/Renovations**  
2002 (A)(R), 2009 (A)

**School Capacity:** 688  
*(This does not include additional capacity provided by 3 portable classrooms.)*

**Total Enrollment (PreK-5):** 636

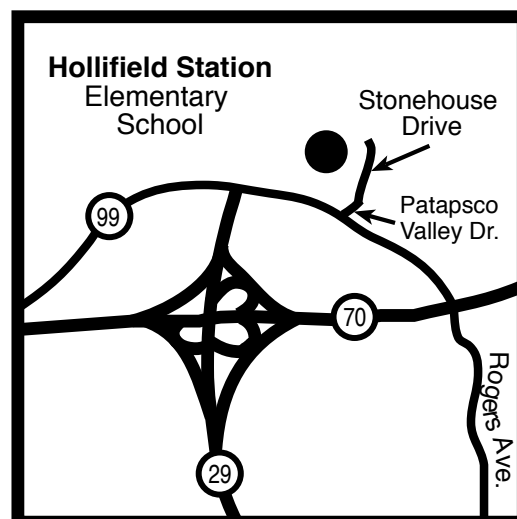
#### Ethnicity

|                  |       |
|------------------|-------|
| White            | 34.4% |
| African American | 14.3% |
| Asian            | 41.7% |
| Hispanic         | 7.4%  |
| Native American  | 0.3%  |
| Not Reported     | 1.9%  |

#### Students Receiving Special Services 2008-09

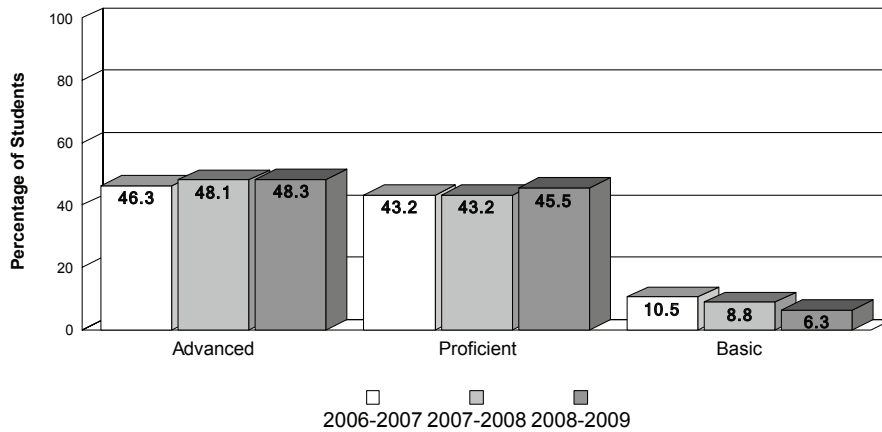
|                         |       |
|-------------------------|-------|
| Title I                 | 0%    |
| Ltd. English Proficient | 17.0% |
| Free/Reduced Lunch      | 13.2% |
| Special Education       | 8.7%  |

**PTA members:** 440

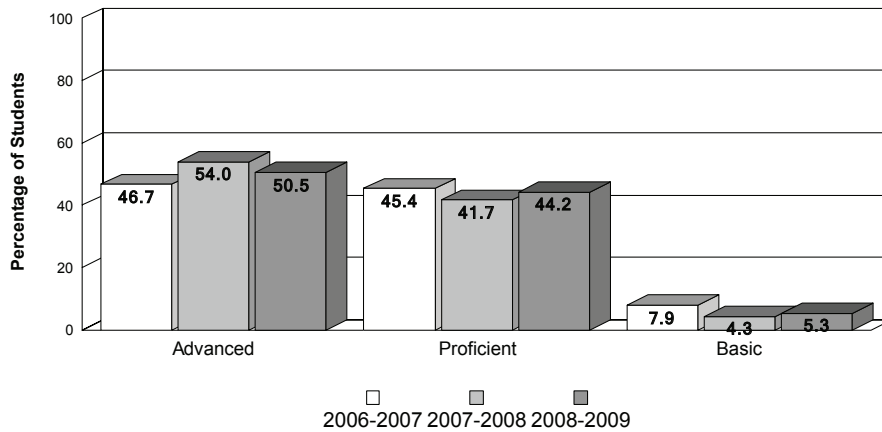


## Achievement Data

### Hollifield Station Elementary School MSA - Mathematics



### MSA - Reading



### MSA Standards - Percent Advanced/Proficient

| School Year | MSDE AYP Standards |             | Howard Cty Standard | Hollifield Station ES |              |
|-------------|--------------------|-------------|---------------------|-----------------------|--------------|
|             | Reading            | Mathematics |                     | Reading               | Mathematics  |
| 2006-2007   | 67.2               | 63.9        | 70.0                | <b>92.10</b>          | <b>89.50</b> |
| 2007-2008   | 71.8               | 69.1        | 70.0                | <b>95.70</b>          | <b>91.20</b> |
| 2008-2009   | 76.5               | 74.2        | 70.0                | <b>94.70</b>          | <b>93.80</b> |

## Accomplishments

2009

- Green School certification awarded by Maryland Association for Environmental and Outdoor Education

2008

- Received Healthy Howard Innovation award in Nutrition for Recess Before Lunch and in Mental Health for Therapeutic Yoga for Teachers
- NAACP Certificate of Excellence for MSA Grades 4 and 5 Reading, Grades 3, 4, and 5 Math, Attendance and Suspensions

HSES has met all of the standards in the tested grades 3, 4, and 5 on the Maryland State Assessment since the assessment was introduced. In addition, our second grade students have exceeded the standards for Reading and Math on the TerraNova/2 assessments since 1997. HSES has, perhaps, the most diverse student population of any school in the county.

We celebrate our extreme pride and honor our diversity and culture throughout the year. Families at HSES have as their primary language at least one of 22 different languages: Arabic, Bengali, Chinese, Creole, English, Farsi, French, Gujarati, Indian, Japanese, Korean, Lithuanian, Malayalam, Nepali, Punjabi, Russian, Spanish, Tamil, Telugu, Turkish, Urdu, and Vietnamese.

## Special Programs

- Educational Partnerships
  - Towson University as a Professional Development School
  - FIRN
- Regional Early Childhood Center
- ESOL Homework Club/Club Leap