

# Centennial Lane Elementary School

## PROFILE

2009-10

3825 Centennial Lane • Ellicott City, MD 21042 • 410.313.2800 • <http://cles.hcps.org/>



Centennial Lane Elementary School (CLES) is located in a beautiful residential area in the heart of Ellicott City. This learning community is built upon the belief that excellence at CLES rests upon a collaborative effort of the staff, students, and parents. As members of the School Improvement Team and PTA Executive Board, our parent representatives are active participants in the decision making and service delivery processes. They respond to the various needs of students by sponsoring many extension activities such as the Cultural Arts program and After School Enrichment Program.

Our theme for this year is *Expanding the Minds, Aligning the Efforts*. Students are encouraged to set goals, express creativity, and apply technology. Our staff enjoys focused professional development activities in Cultural Proficiency, technology, brain-based teaching, as well as the collaboration in problem solving to address students' needs. Our parents welcome the many outreach efforts such as Math Night and the Scholars Club, aimed to promote educational partnership.

We are proud of the recognition by the Maryland State Department of Education and the United States Department of Education as both a state and national Blue Ribbon School in 2004. We strive to maintain excellence not only in the academic and related arts subjects, but also in character education. In 2008, CLES was one of seven schools in the nation to receive the Core Essential Award from Chick-fil-A in character building. In 2009, CLES was the proud recipient of both the Healthy Howard Award and the Green School Certification from the Howard County government.

With our motto of Respect, Responsibility, and Results, CLES staff and parents work hand-in-hand to build a safe and healthy environment and to educate our students to be world-class citizens.

Florence Hu, Principal  
Barbara White, Assistant Principal

### Fast Facts

**Facility opened** - 1973

**Additions/Renovations**  
1987(A), 2007(R), 2008(A)

**School Capacity: 628**  
(This does not include additional capacity provided by 3 portable classrooms.)

**Total Enrollment (K-5):** 652

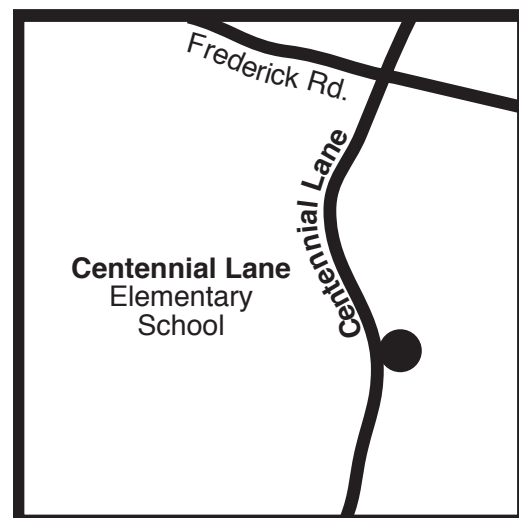
#### Ethnicity

White	54.0%
African American	4.8%
Asian	33.4%
Hispanic	3.4%
Native American	0.2%
Not Reported	4.3%

#### Students Receiving Special Services 2008-09

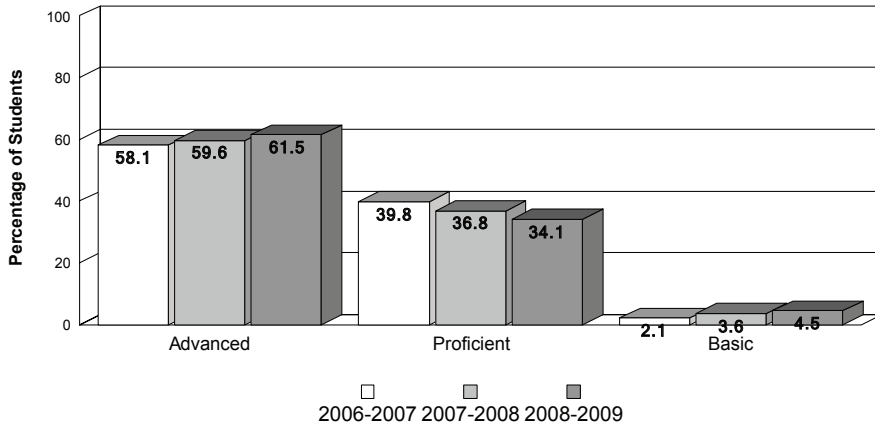
Title I	0%
Ltd. English Proficient	4.1%
Free/Reduced Lunch	3.5%
Special Education	5.3%

**PTA members:** 516

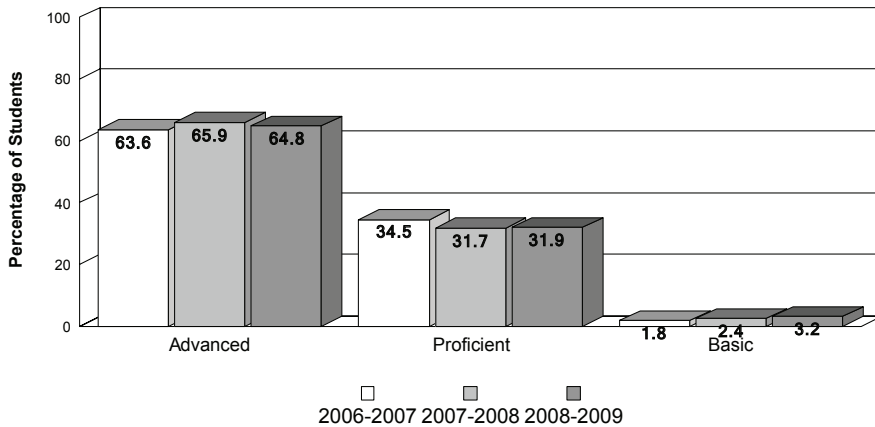


## Achievement Data

### Centennial Lane Elementary School MSA - Mathematics



### MSA - Reading



### MSA Standards - Percent Advanced/Proficient

School Year	MSDE AYP Standards		Howard Cty Standard	Centennial Lane ES	
	Reading	Mathematics		Reading	Mathematics
2006-2007	67.2	63.9	70.0	<b>98.20</b>	<b>97.90</b>
2007-2008	71.8	69.1	70.0	<b>97.60</b>	<b>96.40</b>
2008-2009	76.5	74.2	70.0	<b>96.80</b>	<b>95.50</b>

## Accomplishments

### 2009

- Howard County Green School Certification
- Howard County Healthy School Award
- Howard County Library Battle of the Books Championship
- Safeway eScript Fundraising Honor Roll

### 2008

- National Core Essential Award by Chick-fil-A
- NAACP Distinguished School Award
- Special Education Team Recognition by the Howard County Special Education Community Advisory Committee
- All County Band-12 students

### 2007

- Awarded Grant by Chesapeake Bay Trust for The Living Classroom
- Highest donation to Jump Rope for Heart
- Second highest student participation in Howard County Library Summer Reading Club
- Special Education Team Recognition by the Howard County Special Education Community Advisory Committee

## Special Programs

- Educational Partnerships: 2 (Chevy Chase Bank, Towson University Professional Development School)
- Scholars Club
- Science, Technology, Engineering, Math (STEM)
- PTA Cultural Arts Program
- PTA After School Enrichment Program
- Towson University Professional Development School Intern Program
- Developmental Assets Building Program
- Core Essential Character Education Program
- Mud Club