

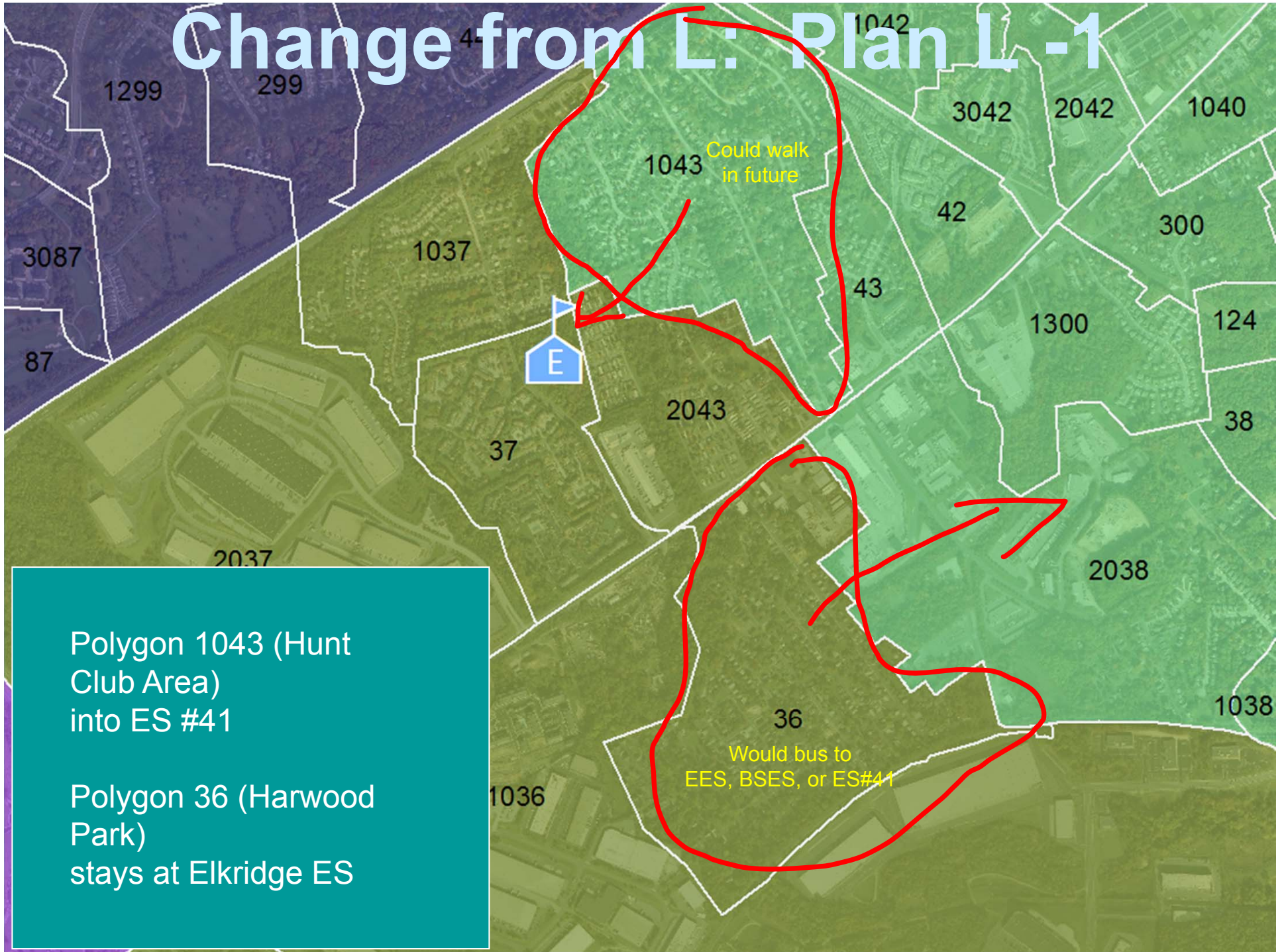
Attendance Area Adjustment Committee

July 31, 2012

Meeting Agenda

- Correspondence
- Assessing plans
 - L-1 (Only slight – handout only)
 - L-2 (K-1 + Δ-Ellicott City + Δ-Swansfield North)
 - L-3 (K-1 + Δ-Ellicott City + Δ-Swansfield South)
- Middle School Plans'
- More Western redistricting - 2016 plans?
- Continued scenario testing

Change from L: Plan L-1



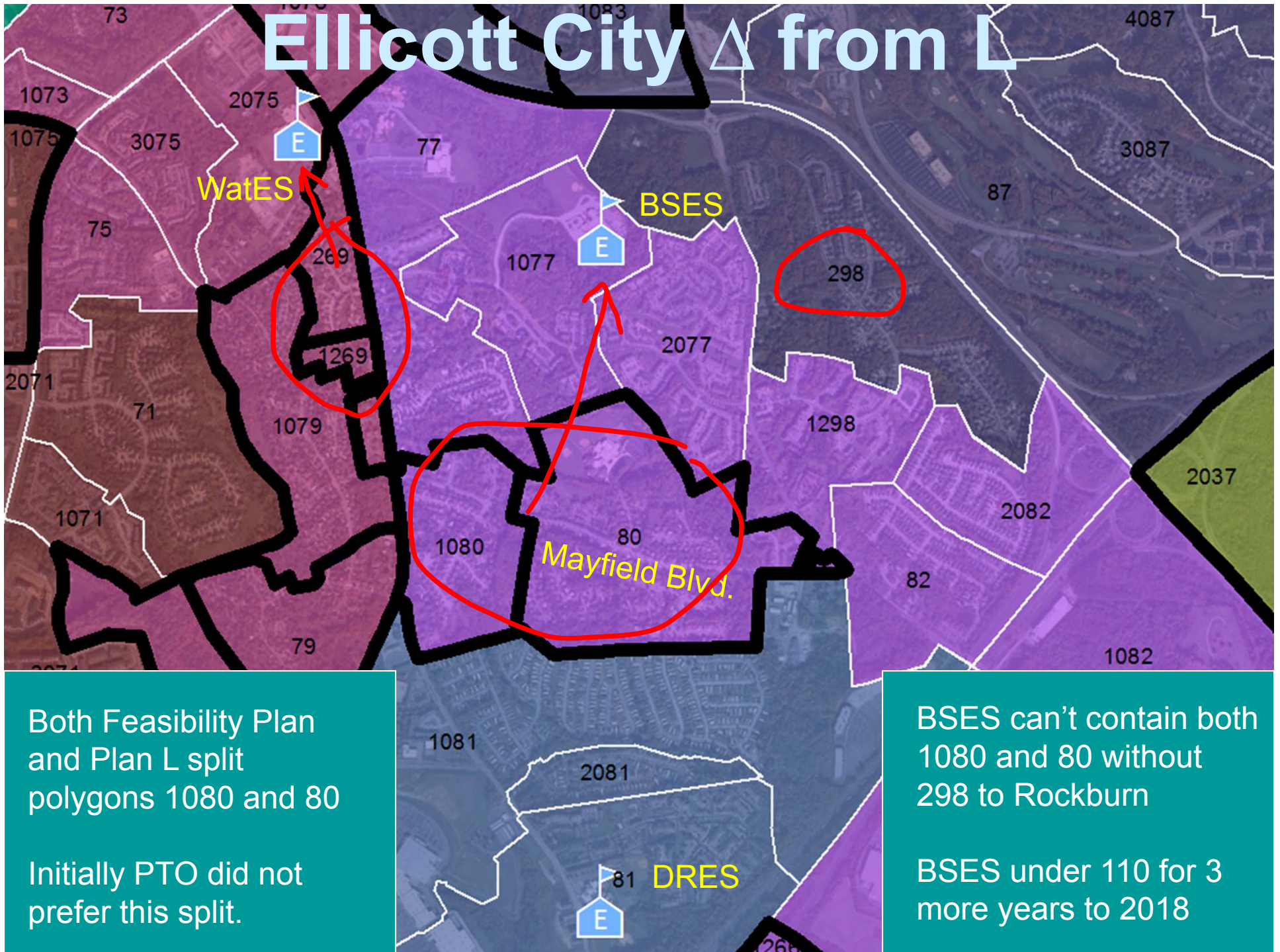
Polygon 1043 (Hunt Club Area)
into ES #41

Polygon 36 (Harwood Park)
stays at Elkridge ES

Plans L-2 & L-3

- Significant changes from L
- Interesting contrasts from Feasibility Study
- In common for L-2 & L-3
 - Include L-1
 - Changes in Ellicott City
 - Both less students than Feasibility Study (2866)
 - L-2 : 2744
 - L-3 : 2744
- Different for L-2 & L-3
 - L-2 Swansfield relief north and west
 - L-3 Swansfield relief south and west

Ellicott City Δ from L



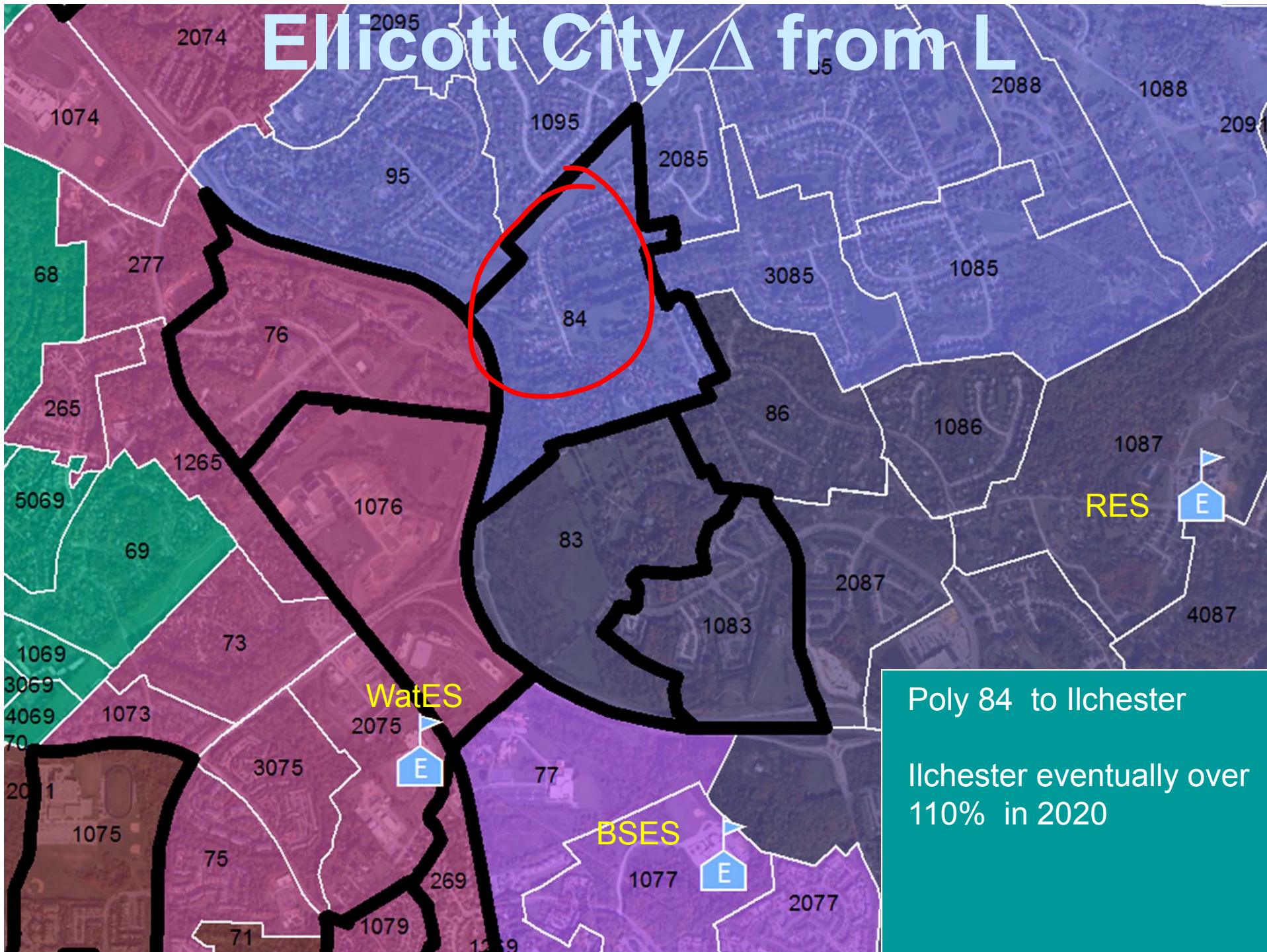
Both Feasibility Plan and Plan L split polygons 1080 and 80

Initially PTO did not prefer this split.

BSES can't contain both 1080 and 80 without 298 to Rockburn

BSES under 110 for 3 more years to 2018

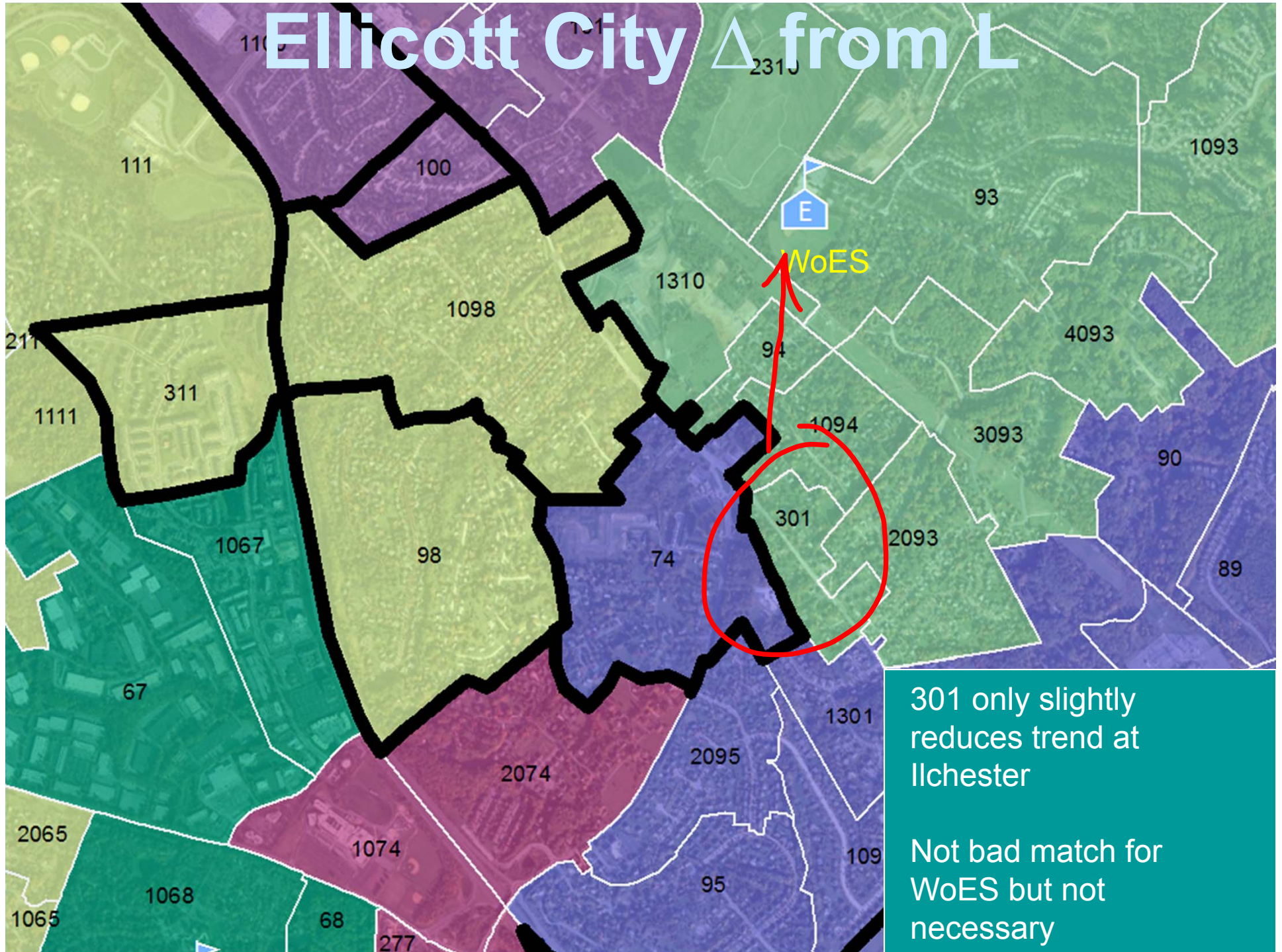
Ellicott City Δ from L



Poly 84 to Ilchester

Ilchester eventually over 110% in 2020

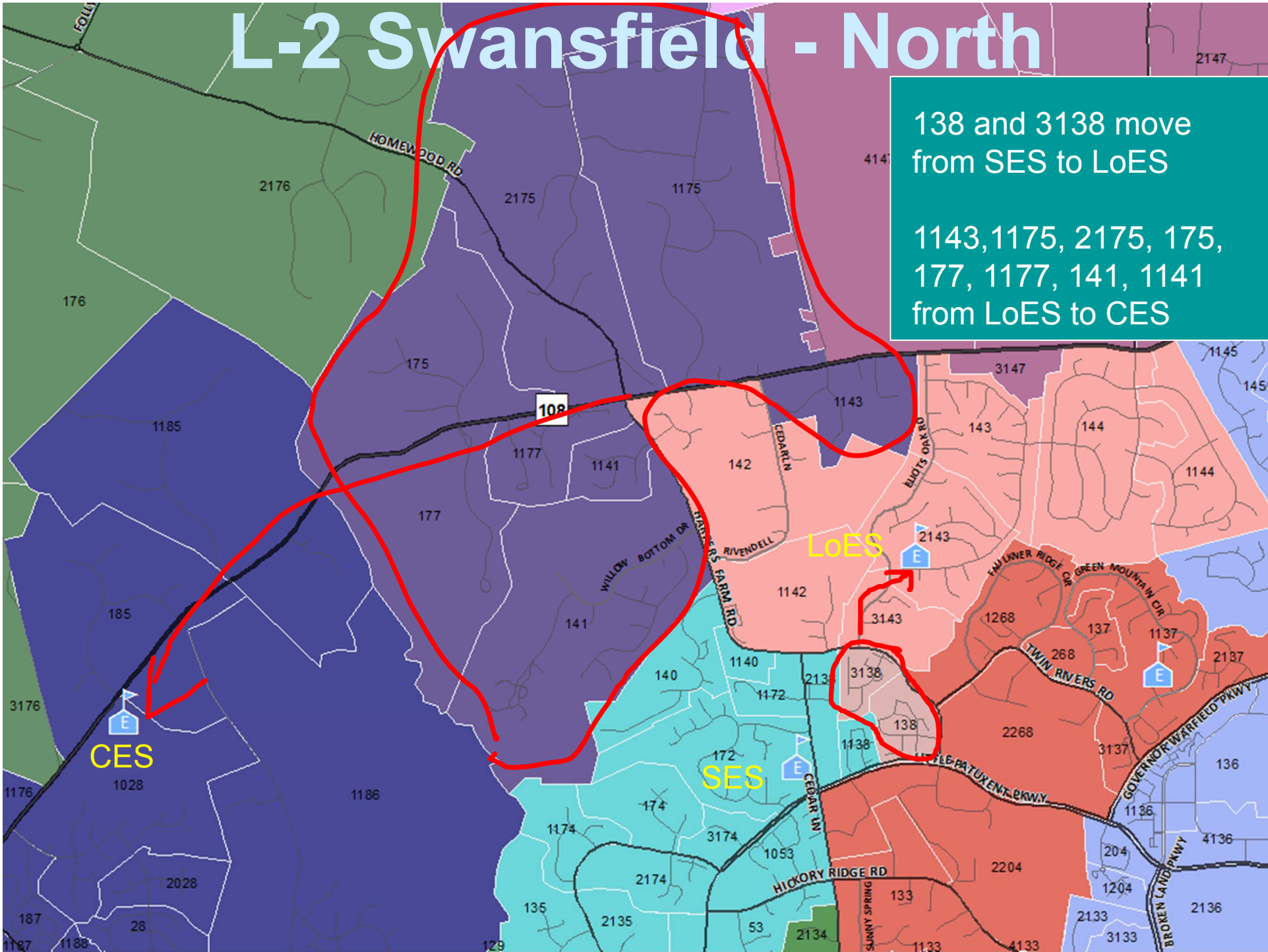
Ellicott City Δ from L



L-2 Swansfield - North

138 and 3138 move
from SES to LoES

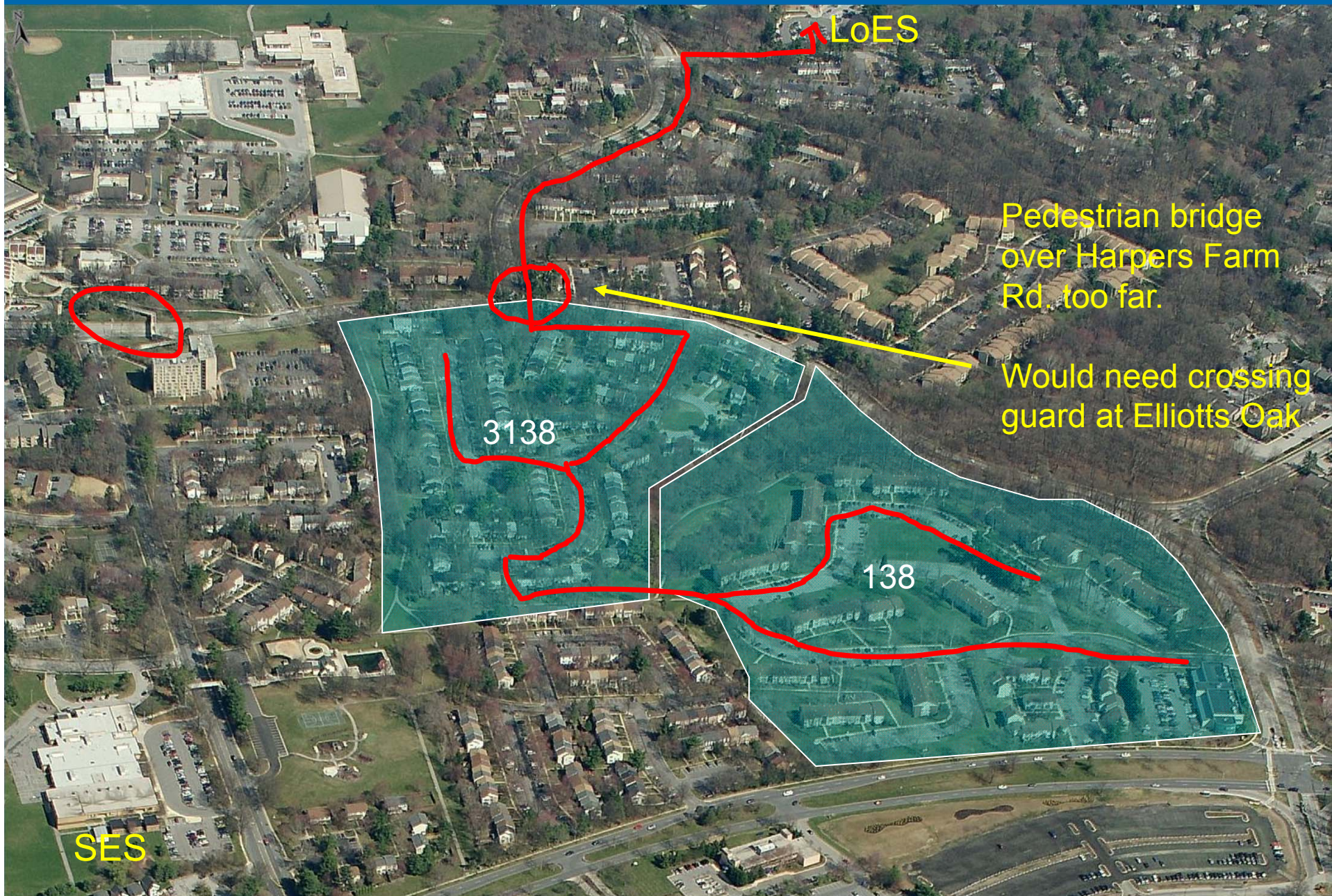
1143, 1175, 2175, 175,
177, 1177, 141, 1141
from LoES to CES



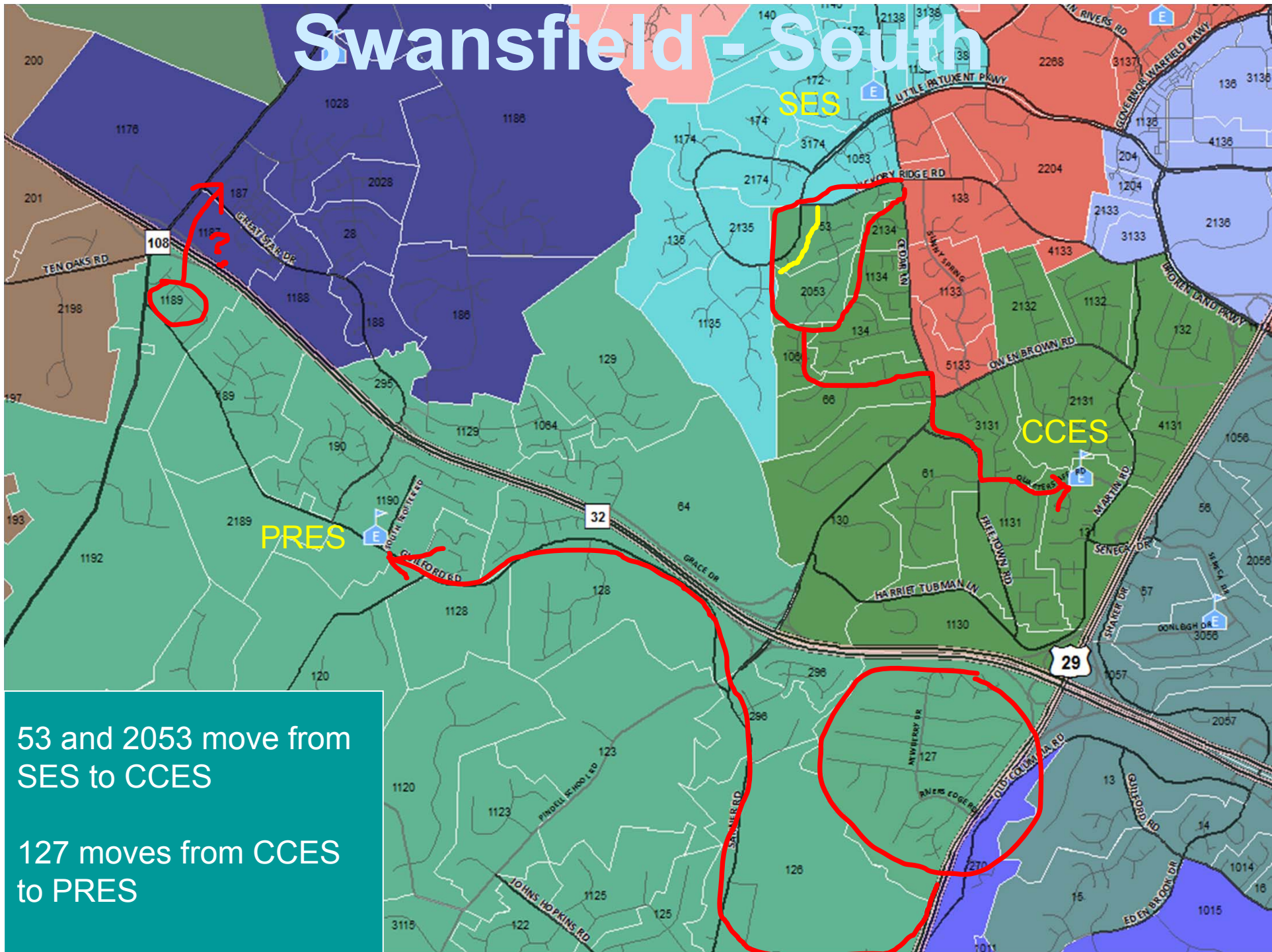
Plan Assessment: L-2



Plan Assessment: L-2



Swansfield - South



Scenario Testing

- Work as whole group
- Determine if Elkridge/Ellicott city changes are favorable
- Consider the rest of 2016 changes – would use more western capacity
- MS incomplete but feeds are definitely improved