

Attendance Area Adjustment Committee

July 5, 2011

Meeting Agenda

- Business
 - Meeting will be recorded
 - Binder TOC - correction
 - AAC Liability
 - Handouts
 - Next Meeting: July 12, 2011
- Projection Method
- Attendance Area Adjustment Tools
- Synopsis 2012-2013 staff recommendation
- Homework: 2011 Feasibility Study

Projection Method



- Detailed and number oriented ... but not magic
- Bottom – up, sensitive to neighborhood trends
- Cohort survival method – typical demographic technique

Projection Method

- Population can increase in only two ways:
 - natural increase (births)
 - net migration (move-ins)



- Housing types effect projection
 - New vs. existing
 - Detached single family, Town home, condominium/apartment or mobile home.

Projection Method

- Track effects for "cohorts," or age groups
- Model at school level to capture local trends
- Repeat annually and adjust based upon experience

Cohort Example

A	B	C	D	E	F	G	H	I	J	
1st Projected Year: 2009							School: Atholton ES			
Attending Population		Projected ----->								
By Sept. 30, ->	<u>2008</u>	<u>2009</u>	<u>2010</u>	<u>2011</u>	<u>2012</u>	<u>2013</u>	<u>2014</u>	<u>2015</u>	<u>2016</u>	
K	76	73	73	73	73	73	73	73	73	
1	64	77	74	75	74	75	75	75	75	
2	76	63	78	74	75	75	75	75	75	
3	60	81	67	83	79	80	80	80	80	
4	67	65	85	71	87	83	84	84	84	
5	72	68	67	85	72	88	84	85	85	
Tot	415	427	444	461	460	474	471	472	472	
Utilization %		110	115	119	119	122	122	122	122	

Enrollment Projection

- Prepared annually
- Starting point for capital budget process
- Basis for redistricting decisions

Enrollment Projection

- Based upon official enrollment reports to MSDE
- Projection checked against new MSDE report
- New projection influenced by analysis of accuracy

Capital Budget / Redistricting Process

Enrollment
Projection
2008

Feasibility Study
June 2008

Observed 2008
Enrollment
September 2008

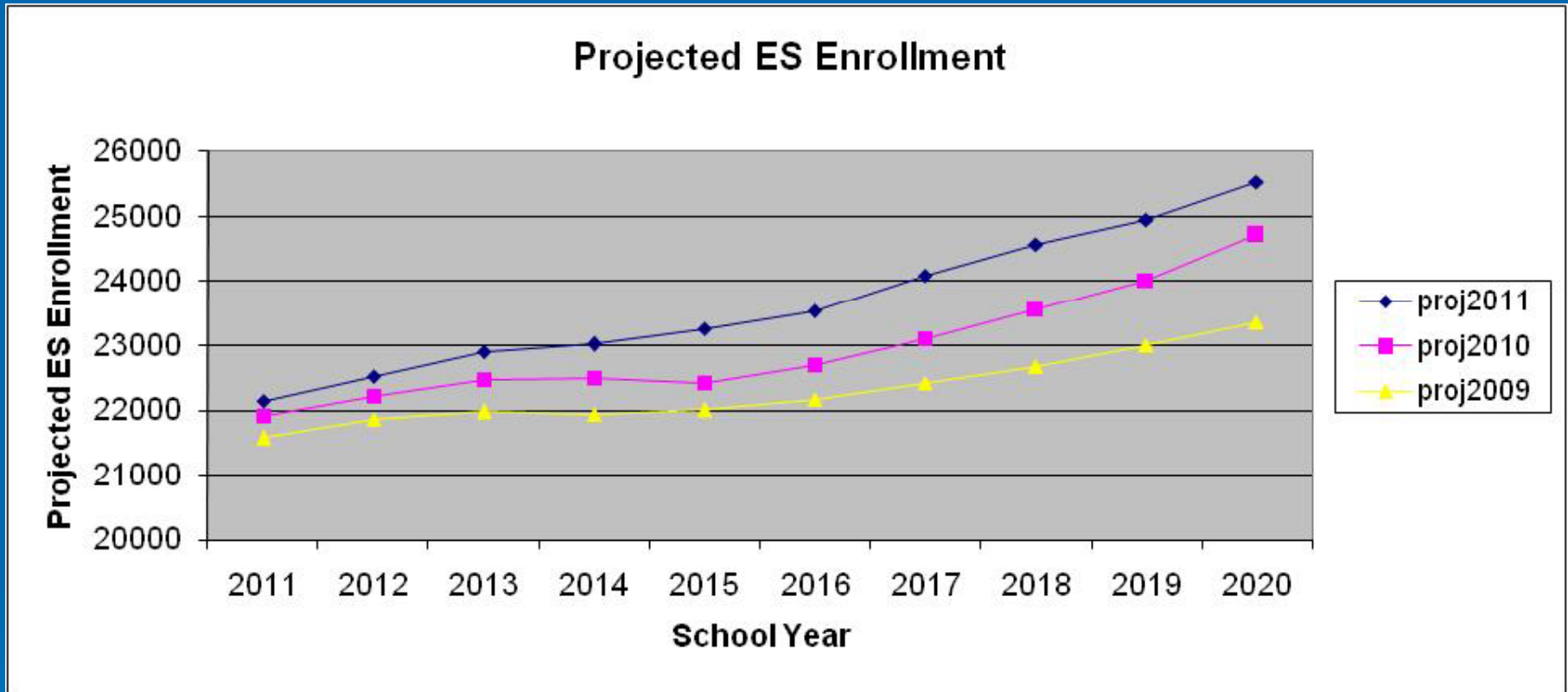
Accuracy Report
February 2009

Enrollment
Projection
2009

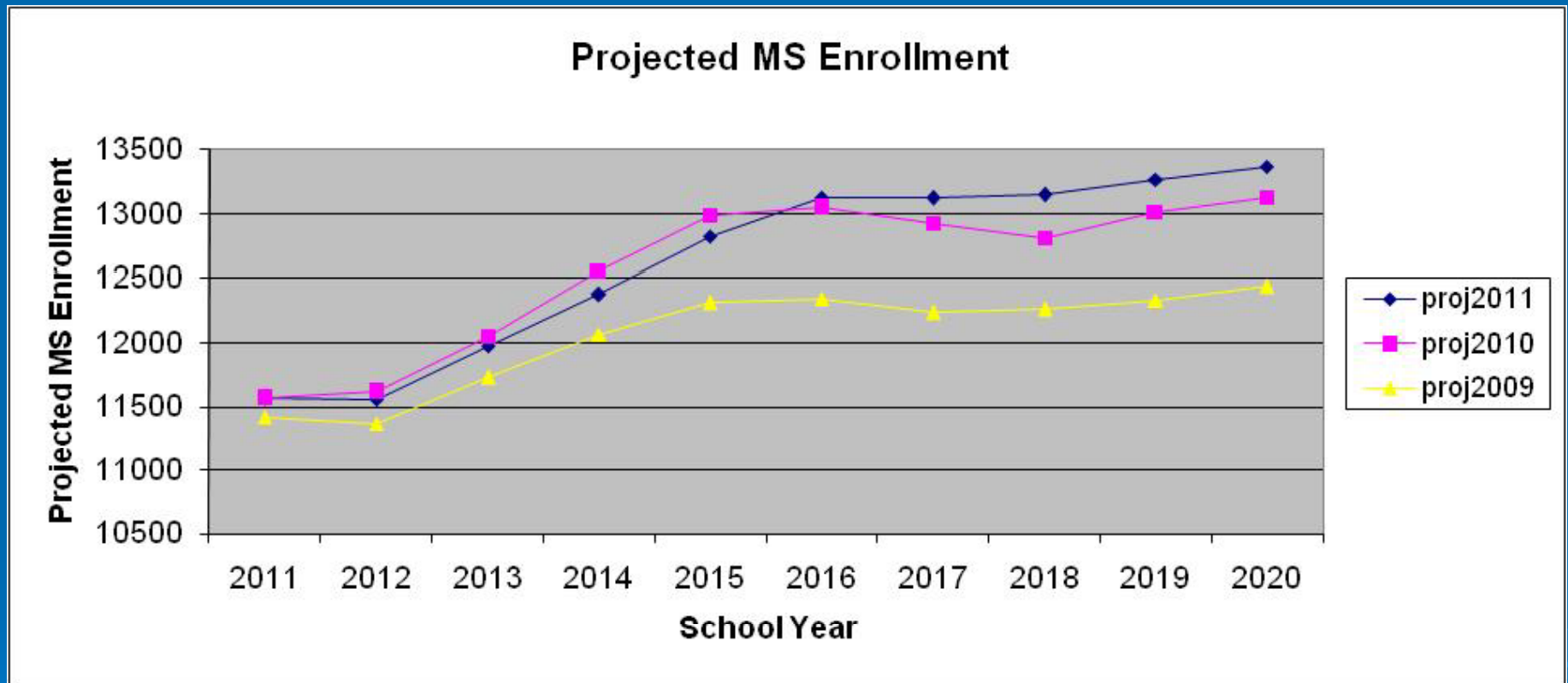
June 2011 Feasibility Study

- <http://www.hcpss.org/boundarylines/>
- Presents all projections
- Evaluates planning trends
- Recommends redistricting in 2012
- Presents long range plan

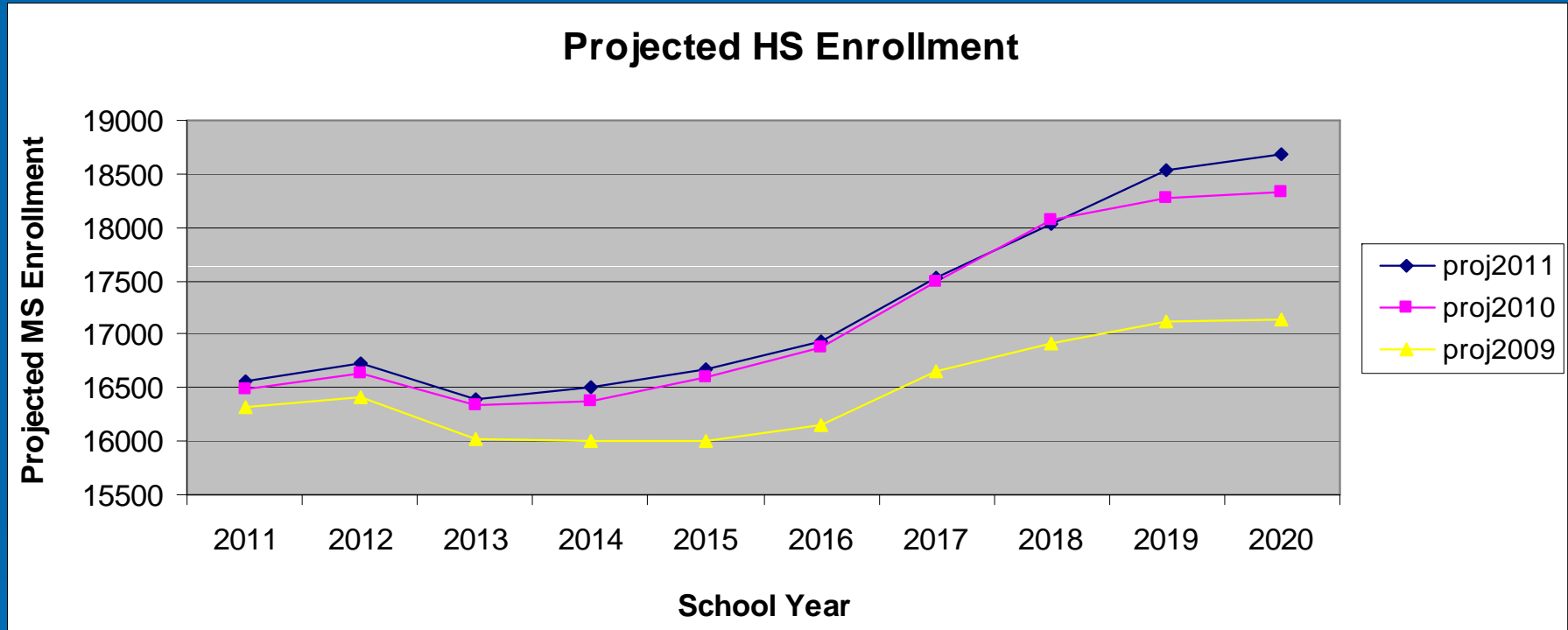
Elementary School Projections



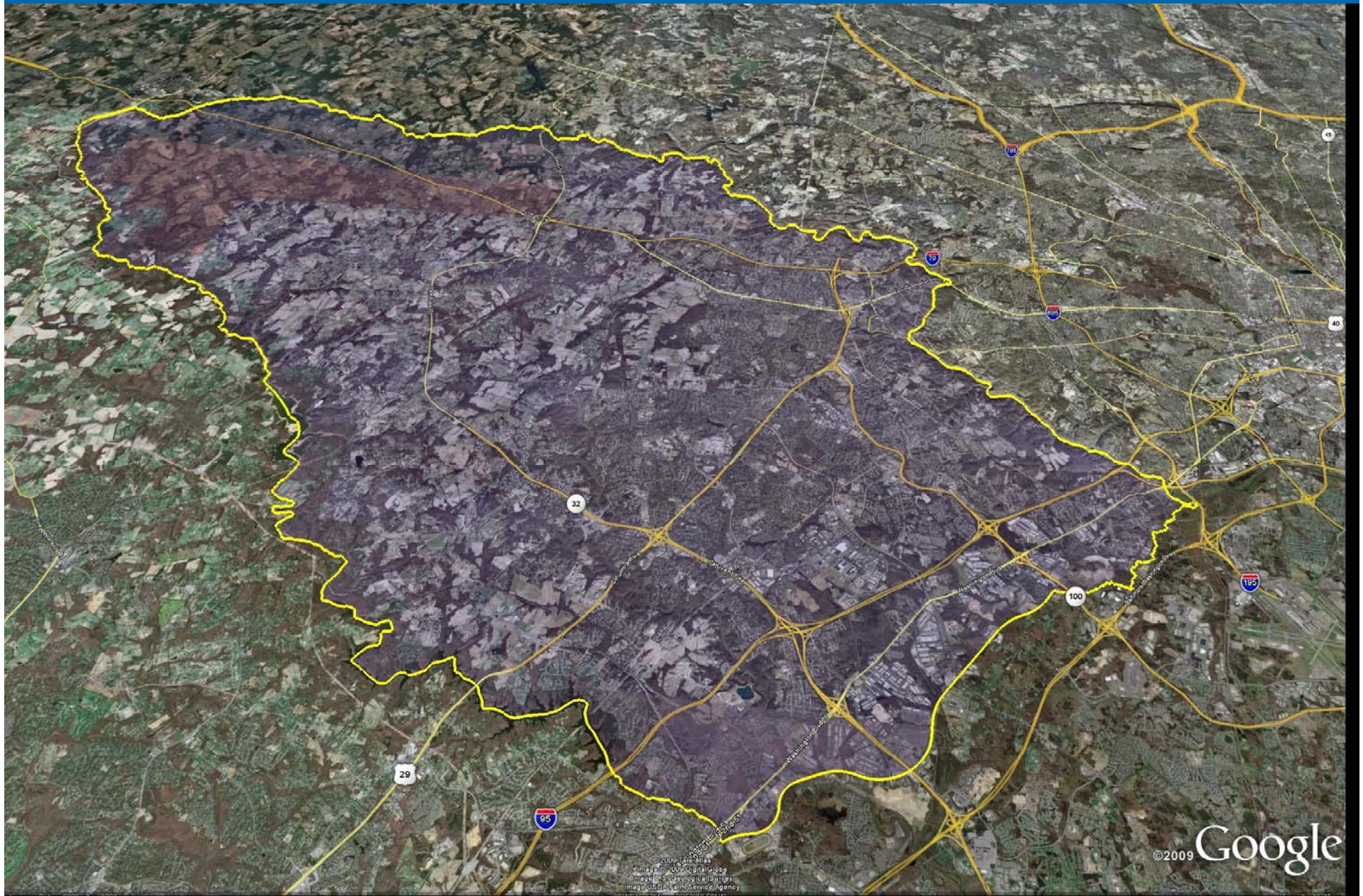
Middle School Projections



High School Projections



Projected Enrollment Growth



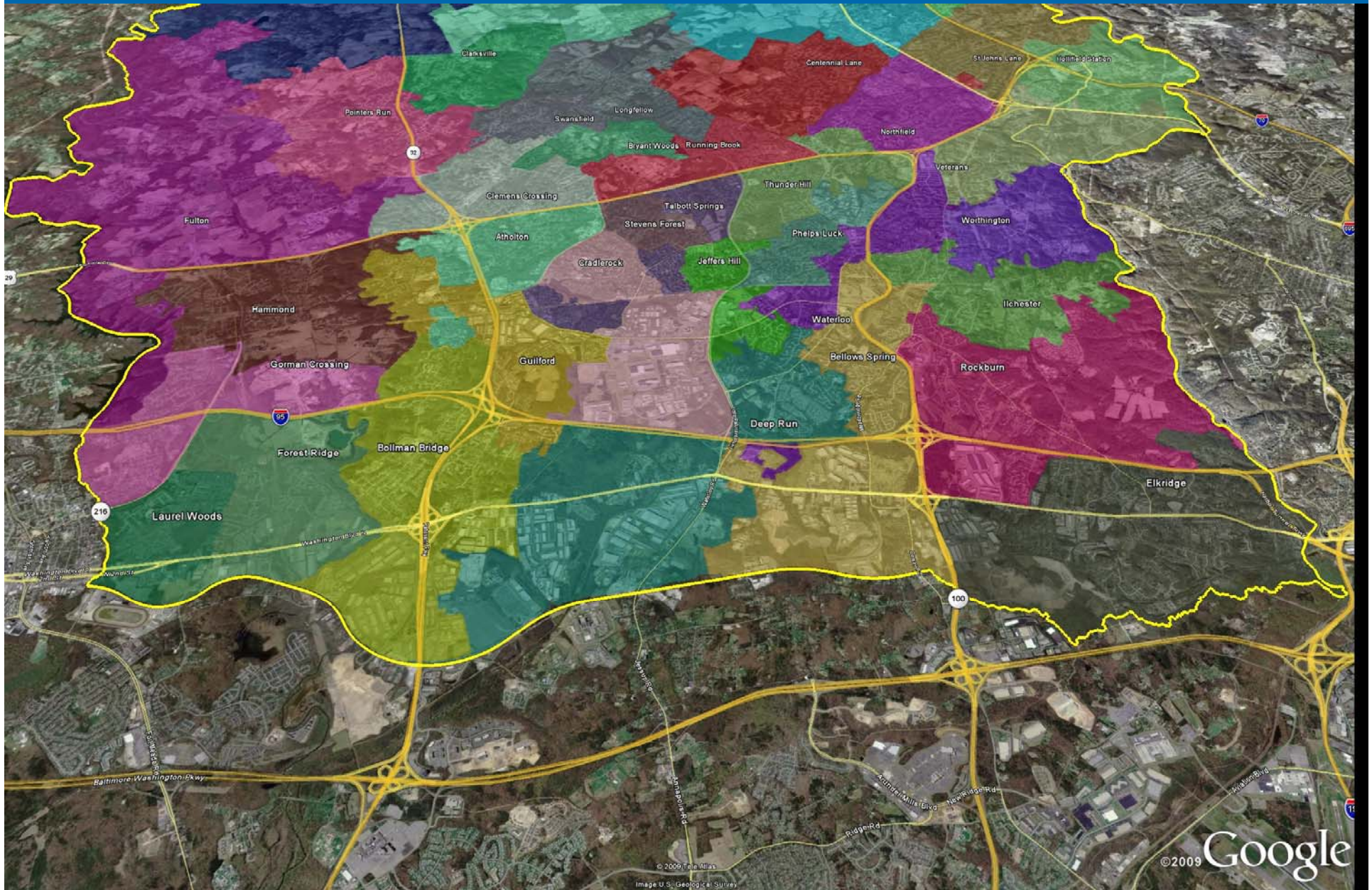
Projected ES Growth 2013



Projected ES Growth 2018



Rt. 1 Corridor



5 minute break



Elementary Strate



Proposed 2012 Redistricting

