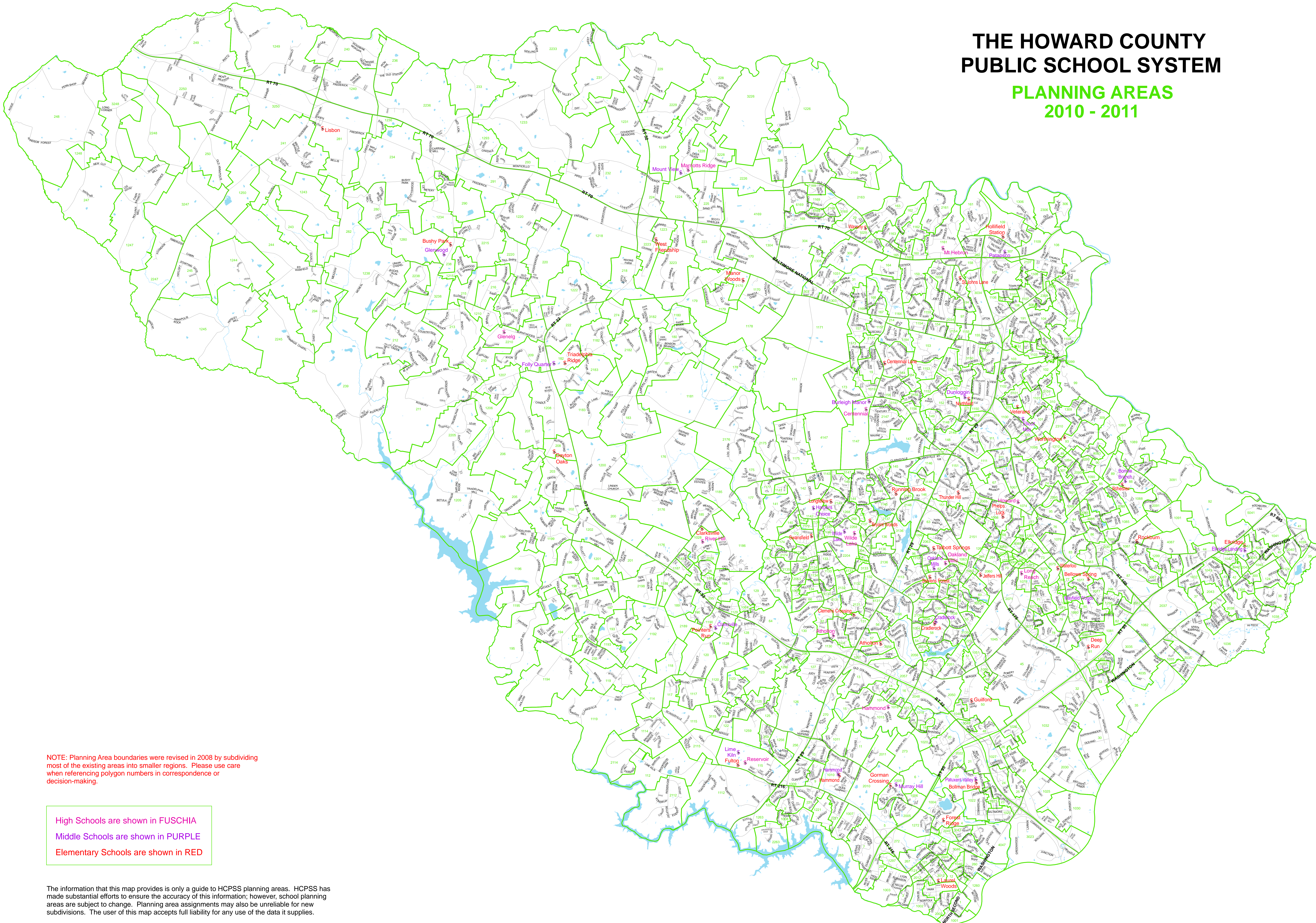


# THE HOWARD COUNTY PUBLIC SCHOOL SYSTEM

## PLANNING AREAS 2010 - 2011



NOTE: Planning Area boundaries were revised in 2008 by subdividing most of the existing areas into smaller regions. Please use care when referencing polygon numbers in correspondence or decision-making.

High Schools are shown in FUSCHIA  
 Middle Schools are shown in PURPLE  
 Elementary Schools are shown in RED

The information that this map provides is only a guide to HCPSS planning areas. HCPSS has made substantial efforts to ensure the accuracy of this information; however, school planning areas are subject to change. Planning area assignments may also be unreliable for new subdivisions. The user of this map accepts full liability for any use of the data it supplies.

To verify any planning area assignment, please call the Public Information Office at (410) 313-6682.