



# Algebra I Ah Na Fa Nih Zeidah Acawn Lai?

Pengnih-Khingthlaimi Cawnawk

2014-2015

*Bomhding Ah Zeidah Na Tuah Khawh? Timi Telhchih*

## HRAWMMI BIAPITNAK A SINHTANHNA

Zapi ca I a biapitnak ramkulh a sinhtanhna tiangtlaknak cu ramkulh thithruai zuamnak a simi Ram Hruaituhna Bu Alaifang nih a tha bikmi tuah kel tuahnak (NGA Alaifang) le Ramkulh Sianginn Zungriantuantuhna Hruaitu a simi Khongsil (CCSSO) timihna ruahti hnu I tuahmi a si. Hi a sinhtanhna cu Saya te, Sianginn tawrel tu hna le a thiammi hna nih kan fa le hna an Sianghleiruun le an rian caah timhtuahnak a simi a fiangmi le aa thleng bal lo mi a hrung hranghna kha I bomh in kauhter le thantermi a si.

Hi sinhtanhna nih hin Mucu kaihlan in kaimi in tang hleihnih tiang Sianghngakchia hna I fimthiam an cawnnak I an hmuhtawnmi le an ngeih ding a simi theih hngalhnak le thiamnak sullam fiantermi a si I cu tik ah Siangsangruun in buaih an lak khawh lai, luhnak sinh a simi, credit a ngeimi Sianghleiruun I cawnmihna le riantuannak I tintan prokem hna ah an hlawh a tling lai. Hi sinhtan hna cu ramkulh ram leng le vulei cung ramkip hna I hmuah ngei bikmi zohchunhawh tuahmi le asangbikmi nih theih hngalhnak termi an si. Hi nih hin Saya hna le Nu le pa hna kha aa lomi theihnak a simi Sianghngakchia hna nih zeidah cawn ding asi lai timi kha a hmuhter hna I cun dannak le tuknak khiahnak a simi zong kha Sianghngakchia vialte caah khawika ummi an si ah aa tlak ning in a pek hna.

Ahram: <http://www.corestandards.org/about-the-standards> timi ah hin zoh khawh a si.

## MARYLAND SIANGHLEIRUUN LE PAWCOMNAK TINHCIA ASIMI ASINHHNA

Hrawmmi biapitnak sinhtanhna I lakmi zulh in, Maryland Fimthiam Cawnnak Bu hna nih a hram a kaumi, a sinh tharmi tha tein zoh cikceknak le aa ruang in tuahmi PK-12 cawn awk tuahmi ca kha hrawmmi ramkulh biapitnak ah tahchunh ding ah kum sau a nguham riantuannak in hram thawk a si. A phi chuak ah, Maryland Fimthiam Cawnnak Bu Hrawmmi Biapitnak Cawnawk tuahmi Ca I a hrung hranghna kha kauhter a si. Hi hrunghranghna a simi Mirang holh asiloah Holh lei Fimthiamnak le Kanan hna nih a fiantermi cu Sianghngakchia hna nih Hrawmmi Biapitnak Ramkulh Sinh a simi fimthiam cawnnak he pehtlaihmi I tinhmi hmuh khawhnak ding ca i tuah khawhnak ding le hngalhnak khawhnak ding ca I a biapimi thiamnak le theih hngalhnak hna kha an si. Hi hrunghranghna hi Maryland I cawnawk tuahmi ca hrampi a si I cawn awk tuahmi ca a hramhna kha kauh ter nak dingah lam hmuhsak a si. Maryland Sianghleiruun le pawcomnak tinhcia asimi asinhna cu ramkulh sinh hrawmmi biapitnak hna cungah hrambunh asi.

### Maryland I Asinhna:

- Thil tehte kha a hram si maw.
- Sianghleiruun le rian I tinhmi he an I tlang maw.
- Fiang, hngalhnak hawh le thlenglo in an si maw.
- Felfaimi chungtel le hngalhnak le sangmi thiamnak hna I cawnmi aa telnihna an si.
- Tulio ramkulh sinh I cawnawk ca hna le thil tikhawhnak hna cung in tuahmi an si.
- Ram dang sangsang tuahmihnanih theihhngalhnak termi an si maw, cu tikah Sianghngakchia zate nih vulei cung pumpi thanchonak le mibu he tahchunh in hlawh a tling maw.

# Chungkhar Lamhruaitu le Maryland Siangsangruun Sianginn Khingthlainakhna



## Maryland Siangsangruun Sianginn Khingthlainakhna

Siangsangruun Sianginn Khingthlaina cawnawkhna cu Algebra I, Mirangca 10, Biology, le American Cozahhna hi an si. Maryland siangsangruun sianginn diploma hmuh dingah hi cawndingmi I khingthlainak hi an awn ding a si. Hi khingthlainak nih siangsangruun an dih in an herhmi a hram asimi thiamnak an thiam cikcek in awn khawh nak ding kha a can ter. Mirang ca le algebra I khingthlainak nih sianghnakchiahna Maryland Sianghleiruun le Pawcomnak ding ah Imanhnak Asinh hlawh tinnak relnak a ngei. A Cozah le Biology hna ah hin Siangsangruun Khingthlainak zohkhenhnak a peh lai. Cawn dingmi chungtel pakhat cio hngalh dingmi langhter khawh nak dingah thiamnak le hngalhnak kha an biapi mi hna cu Howard County Public System (HCPSS) cawnaw I tuahmi ah thuk pi in aa bunh. Cawndingmi pali khingthlainak he aa tuaimi cu sianghngakchia thar luh lio le kum hnih a cawngcang mi sianghngakchia hna luh can ah sining tein lak a si.

American Cozah khingthlainak cu kum 2011 ah ngolta a rak si, sinain kum 2012 thal chuahka ah khin Maryland upadi sertu nih nawl peknak in hmasa sining in siter tthan asi.

Cozah HSA cu Sianginn kai kum 2013-2014 a pinlei tiang I Tang 9 a lutmi Sianghngakchiahna caah ca cawnmi awnnak ah a herhmi thil a si.

## Siangsangruun Sianginn Cawcawnmi Awnnak Khingthlainak A Herhmi Thil

Cawnaw	Camipuai A Tuatu Sining	SY 2014-2015	SY 2015-2016
<b>Algebra I</b>	Thal le Khuasik Kar Kum Hram 2014 ah Avoikhatnak Algebra Kanan I Cawnding Caah Minkhumhnak Tuah	PARCC Algebra I Asiloah Algebra/HSA Konglam Zoh Cikceknak/Mod-HSA*	PARCC Algebra I
	Khuasik Hlandeuh Vak 2014 ah Algebra Kanan I Dih		
<b>Mirangca 10</b>	Thal le Khuasik Kar Kum Hram 2014 ah Avoikhatnak Mirangca 10 Cawnding Caah Minkhumhnak Tuah	PARCC Mirangca 10 Asiloah Mirang 10 HAS/ Mod-HSA*	PARCC Mirang 10
	Khuasik Hlandeuh Vak 2014 ah Mirangca 10 Dih		
<b>Biology</b>	Thal le Khuasik Kar Kum Hram 2014 ah Avoikhatnak Biology Cawnding Caah Minkhumhnak Tuah	Biology HSA/Mod-HAS*	Biology HSA
	Khuasik Hlandeuh Vak 2014 ah Biology Dih		
<b>American Cozah</b>	Thal le Khuasik Kar Kum Hram 2014 ah Avoikhatnak American Cozah Cawnding Caah Minkhumhnak Tuah	Cozah HSA/Mod-HSA*	Cozah HSA
	Khuasik Hlandeuh Vak 2014 ah American Cozah Dih		

Mod-HSA cu A Hleice Cawcangmi Sianghngakchia Hngalhnak Caah Asi.

## Siangsangruun Sianginn Awnnak Khingthlainak Aherhmi Halmi Caah Awnnak Hmak

Algebra/Konglam Zokcikcekmi HSA	PARCC Algebra I	Mirangca HSA	PARCC Mirangca 10	Biology HSA	Acozah HSA
412	Thal le Khuasik Kar 2015 Biakhiah Dingmi	396	Thal le Khuasik Kar 2015 Biakhiah Dingmi	400	394

## Khingthlainak Aphichuakhna

- Atanglei suaimi nih hin peng siangsangruun sianginn khingthlainak a herhmi lak hna ah asi khomi a pichuak list tuahmi an si.

Khingthlaina Cawnaw	+	Aherhmi Khingthlainak	=	Aphichuak
Awn		Awn		Maryland Siangsangruun Sianginn Diploma hmuhnak ding lam
Awn		SUNGH		Bawmhnak peknak le Camipuai Tuah-Tham
SUNGH		Awn		Cawnaw Lak-Tham
SUNGH		SUNGH		Cawnaw le Camipuai Tuah-Tham

# Karлак Thlaknak le Online Cawnawkhna

## Karлак Thlaknak le Khingthlainak Lakthanmi

Howard County Policy 8030 nih a chimmi cu Sianghngakchia nih thazang dernak zon thonter deuh dingah hnatlak pimi bomhnak prokrem chung ah sianghngakchia nih an I tel ah cun, hmuhmi hmak kai ter deuh dingah camipuai an tuah than lai. Sianghngakchia siangsangruun sianginn I peng nih a herh a timi khingthlainak I a sungmi nih camipuai tuah than hlan ah aa tlakmi bomhnak a hmuh hrim ding a silai. Howard County zong nih peng nih herh a timi khingthlainak cawnawcawn lio le cawn hlan ah karлак thlaknak a phunphun tuah piak asi lai. Chapchih in, Sianginn ningcang nih aa tlakmi bomhnak hmuh dingah Sianghngakchia hna caah thimkhawhmi adang dang tampi a ngeih. Atanglei suaimi hi karлак thlak hmuh khawhmi a tawinak in a tuahmi asi. Tamdeuh thongpang theih dingah na Sianginn ruahnak petu sinah chonkhawh asi.

Cawnawkmi Hlan	Cawnawkmi Chung	Cawnawkmi Hnu (Aatlakmi Bomhnak Pekmi)
Sianglairuun Sianginn Karлак Thlaknakhna	Kopchih in chimhmi Semina Cawnawc Tuahmihna	Thal Sianginn
Thal Sianginn I cawnawc tuahmi tinh chungnak	Buaktlak in fimthiam cawnawc kxanhna I kopchih in chimmi	Hngalh Hirhiar in Cawnawkmi
	Hleice bomhnak pek le thazang peknak caah cawnpiakmi	Sianginn hnu i karлак thlaknak prokrem hna le cawnpiaknak hna
	Sianginn hnu I karлак thlak prokrem hna le cawnpiaknak hna	Zarh te ni Pehtlainak Hleidonhmi Cawnawc Sang Sianginn

## Maryland Peng Khingthlainak Aherh Timi Caah AP Airawhlu Camipuai

A harmi cawnawkrian tamdeuh dingah le a hmanlomi hnesaknak hlonh ding thazang pek dingah, MSDE nih aa tlakmi peng khingthlainak cung in hmuhmi hmak ai rolh ding in Khingthlainak I Cungkainak Hmunhmapeknak (AP) camipuai (a tanglei hi zoh) hngalhami cung in hmank hmuhmi 3, 4 le 5 kha a co hlan hna.

MD HSA	Tangsangdeuh Hmunhma Peknak Camipuai(Cohlankhawhmi Hmakhmuhmihna: 3, 4, 5)	Sianghngakchia Ca Herhmihna
Algebra/Akong Alam Zoh Cikcek	<ul style="list-style-type: none"> <li>Kanan Calculus AB</li> <li>Kanan Calculus BC</li> <li>Tuak Thiarnak Cawnawc</li> </ul>	<ul style="list-style-type: none"> <li>AP cawnawc le hneksaknak lak</li> <li>Cohlak khawhmi hmak hmuh</li> <li>Awnnak Hmak peng nih a herh a timi khingthlainak caah co hlan khawhmi AP hmakhmuhmi ai rolh.</li> </ul>
Mirangca	<ul style="list-style-type: none"> <li>Mirang Holh</li> <li>Mirangca Cawn</li> </ul>	
Biology	<ul style="list-style-type: none"> <li>Biology</li> </ul>	
Cozah	<ul style="list-style-type: none"> <li>U.S. Cozah Le Ramkhehnak</li> </ul>	

## Hmankhawhmi Sernak I Cawnaklei Caah Karлак Pehtlainak Tinhtuahnak

- Hamnkhawhmi Sernak I Cawnaklei Caah Karлак Pehtlainak nih hin Maryland Siangsangruun Sianginn Diploma lei a hruaitu hnesaknak I a herhmi hmuh dingah aa tlakmi Sianghngakchiahna caah a hlei in a tuahpiak. Buah lak khawh dingah Sianghngakchiahna nih an thiamnak le fimnak kha, phunglam ning asimi camipuai prokrem asilo le awnnak asiloah hmak hmuhmi cawhmi, kum donghlei 2015 ah bia khiah, asiloah Karлак Pehtlainak Hleidonhmi Tinhtuahnak Prokrem in tehte in langhter hrim ding asi. HCPSS Sianghngakchia I thim khawhmi caah hmuh ding kaa tlak ko tiah aa ruahmi hna cu Sianginn ruahnak petu he Hmankhawhmi Sernak I Cawnaklei Caah Karлак Pehtlainak Tinhtuahnak kha a kawl a hau.
- Hi Karлак Pehtlainak hi Maryland Peng Fimthiam Cawnawc Bu nih theihngalh pimi asi I Maryland Phunglam i Phung Upadi (COMAR) chungah telhchih asi.

# HSA He Pehtlaih Hal Lengmangmi

## Sianglairuun Sianginn Siangngakchia hna nih Siangsangruun asinh I cawnawki peng nih a herh a timi kxingthlainak an la ve maw?

Sianglairuun Sianginn Siangngakchia Siangsangruun asinh cawnawki a la mi nih aa tlakmi a herh timi Kxingthlainak kha a lak hrim a hau. Sianglairuun Sianginn Siangngakchia zate nih Sianglairuun I an lak mi peng kxingthlainak pakhatkhat kha awn ding a hal. Sianglairuun I peng nih herh timi kxingthlainak a la I a awngmi Siangngakchia hna nih buah lak nak ding I fialmi ah an hmuhmi hmak hna kha an I ngeih khawh.

## Mirang Holh Acawngmi nih Peng nih Herh Timi Kxingthlainak Lakding Aherh Maw?

Adang peng bantuk in Maryland nih, Siangngakchia hna nih Sianginn an kai chung vialte Mirang holh nal tein chim khawhnak an ngeih I an than cho nak a tahpia hna. Sianginn nih credit a ummi cawnawki biakhiahbak tuahpiak tik I a hlawa a tlingmi si awk ah Mirang Holh Cawnlio (ELL) min an khumhna. ELL Siangngakchia hna nih aa tlakmi cawn awk an min khumh tik ah peng nih a herh timi kxingthlainak an lak lai.

## Howard County I an cawnpiaknak prokem nih Peng nih Aherh timi Kxingthlainak caah ka fa kha zeitindah tinhtuahnak a pek?

Hneksakmi cawnawki vialte nih hin peng nih ngeihmi Abiapimi Muru Cawnnak Tinhmi asimi Howard County i a biapimi cawnawki tuahmi ca chung ah aa benhmi kha a ngeih hna. Howard County cawnawki tuahmi ca nih Biapitnak Cawnnak Tinhtuahnak biapitnak pin lei tiang nih a telhmi ah a va kauh chih; sihmanselaw, peng nih a herh a timi kxingthlainak caah a chung um mi thil vialte a herh dih I cu cu a biapimi cawn awk tuahmi ca chungah an um dih.

## Hleice Fimcawnnak I Siangngakchia hna caah zeibantuk rawl le inn khan dah hman asi?

Nitin cawn piaknak I umnak pekmi paoh le a khan chung kxingthlainak cungh Siangngakchia hna I a IEP I tialmi bantuk te in, peng nih a herhmi a timi kxingthlainak cungh zongah tuah piak a si ve lai.

## Midang Siangngakchia hna nih rawl le inn khan hmuh ding an I tlak ve maw?

Maryland nih Siangngakchia a herhmi caah hnesaknak tuah tuah ding nawl a pek. Hi inn khan le rawl hna hi Siangngakchia I a IEP, 504 tinhmi, asiloah ELL tinhmi chungah konglam tialmi chung ah tial ding hrim a si.

## Ka fa nih zeitikah peng nih a herh a timi kxingthlainak a lak te lai?

Peng nih a herh a timi kxingthlainak cu Siangngakchia hna nih cawnawki muisam tungtlang tuah piak mi a dongh lei ah lak khawh a si lai.

## Peng nih a herh a timi kxingthlainak cungh ze hi dah awnnak hmuhmi hmak asi?

HSA Algebra/akong alam zoh cikeknak ca I awnnak hmuhmi hmank cu 412 asi, biology caah 400, le mirangca caah 396 asi. Cozah caah 394 hna an si. PARCC Algebra L and PARCC mirangca 10 awnnak hmak hna cu 2015 dong lei ah biakhiah a sit e lai.

## Zeitindah hnesaknak a phi nu le hna nih hmuh asi lai?

Nu le pa hna nih fa le hmuhmi hmak a phi cu Howard County Zapi Sianginn Ningcang I hnesaknak tuahdih zarh hra nak hrong ah khin hmuh a sit e lai. A hlei thongthanhnak hal asi ah cun, nu le pa hna nih Sianginn asiloah Sianginn ningcang I rian ngeitu tuahmi hnu zultu sin ah chonh khawh asi.

## Siangngakchia nih kxingthlainak an sungah ah cun, buah a can teah an hmuh khawhnak dingah Sianginn kai kum ah campuai tuahthan khawh asi lai maw?

Siangngakchia tamdeuh hna cu peng nih a herh a timi kxingthlainak hi tang 9 asiloah tang 10 ah lak dih asi. Buah lak hlan ah, campuai an sungah ah cun, a hleice in bomhnak le campuai tuah thannak can tha an ngeih lai.

## Zeitik ah dah pekmi nawl ngeihnak bomhnak pek hi a si te lai?

Siangngakchia kxingthlainak a sungmi hna cu aa tlakmi bomhnak ah an I tel hnu ah siangngakchia hna nih kxingthlainak lak than khawh a si lai.

## Siangsangruun Sianginn Kxingthlainak buaihlanak ding I a herhmi hmuh dingah ze hna dah karlak thlak thim khawhmi lam an si?

Howard County Zapi Sianginn Ningcang chung in, Siangngakchia hna nih peng nih a herh a timi kxingthlainak ah, a tang lei karlak thlak thim khawhmi an hmuhmi hna an si:

- Cungkainak Hmunhma Peknak (AP) campuai ai rawlmi nih hin hi AP campuai he pehtlaihmi a herh timi peng kxingthlainak ai ah lakmi peng kxingthlainak cungh ah hnatlak mi kha siangngakchia hna nih hman a si lai
- I Thimkhawhmi Cawhmi in Hmuhmi Hmak nih hnesaknak nih Siangngakchia hna kha a dang cungh I a sang deuhmi tuahmi nih a niamdeuhmi tuahnak kha rull nak nawl a pek.
- Cawnnak lei he pehtlaihmi hman khawh ding ser dingah pehtlaihmi hleidonhmi cu siangngakchia bomh ko nabu in peng nih herh a timi kxingthlainak pakhat asiloah tamdeuh a awng kho lo minih hmuh khawh ding in tuah a si lai. Siangngakchia hna nih buaktlak in thenmi phunthum hmuh hrim a hau: voihnih tiang campuai a tuah I a sungmi, aa tlakmi bomhnak pekmi ah aa telmi, le buaihlanak ding tiang lungtling in a thangchomi. Siangngakchia I Cawnnaklei Theihhngalh Pinak Tuahding Tinhmi Funmi I tel dingah tuah ding tinhmi bia khiahnak ah Siangngakchia I tel ding aa tlakmi nih Sianginn riantuan tu hna he an I tong lai.

# Maryland Siangsangrunn Sianginn Buaihlaknak ah a herhmihna

**Credit Aherhmi:** Sianghngakchiahna nih buaih lak ding ah a tlombikah 21 credit tal hmuh a hau. Atang lei hna ahhin credit hmuhkhawh an si.:

AMURU HERHMIHNA			ADANG HERHMIHNA	
Cawnmi Hmun	Tulio Mahbing Ca Credit Herhmihna	Pengnih Khingthlaimi Cawnmi	Cawnmi Hmun	Tulio Mahbing Ca Credit Herhmihna
Kanan^	Credits 3*, telchihin: • Hrommi Biapitnak Algebra I chung in Credit 1 • Hrommi Biapitnak Geometry Kanan chung in Credit 1	Algebra I	Athami Thildawh Serthiamnak	Credit 1
			Lentecelhnak le Cawlcanghnak Cawnpiakmi	Credit 1/2, Nunchung Damnak telhchihin:
Mirangca	Credit 4, telchihin: • Hrommi Biapitnak Mirangca 9 chung in Credit 1 • Hrommi Biapitnak Mirangca 10 chung in Credit 1 • Hrommi Biapitnak Mirangca 11 chung in Credit 1 • Hrommi Biapitnak Mirangca 12 chung in Credit 1	Mirangca 10	Ngandamnak	Credit 1/2, Ngandamnaklei Fimcawnnak asiloah Atulio Ngandamnak Kong telchihin:
			Setlei Fimcawnnak	Credit 1
Teihpan	Credit 3, telchihin: • Biology in Credit 1 • Chapchihmi Credit 2 hnesaknak hmun I hmuhtonmi, zeipoah telchihin asiloah a tanglei zate hmunhma in: » Vulei Teihpan » Pongkam he pehtlaimi Teihpan » Nunak Teihpan » Anung lomi kong Teihpan	Biology	Progkrem Thimnak	Vulei Pumpi Holh in credit 2** ASILOAH American Kut Ke in I Biakchonhmi Holh in credit 2*** ASILOAH Hnatlakpimi Sangdeuhmi Setlei Prokrem in credit 2 ASILOAH Fimthiamnak Cawnnak lei Pawcawnnak (Peng nih hnatlak pimi Pawcawnnak le Setlei Fimthiam Cawnnak Adihmi ca Prokrem) in credit 4
Zatlang Nun Kong Cawnnakhna	Credit 3, telchihin: • US Tuanbia in credit 1 • Khuachung, Peng le Rampumpi Cozah in credit 1 • Vulei Tuanbia in Credit 1	American Cozah ****	Thimmi	Aherh timi pinlei cawnmi telhmi in Credit 1-3.

^ 2014-2015 sianginn kum chungah, Tang 9 alutmi sianghngakchia he thawk in kanan 4 ah min I khumh ding in fial a si.

\* Sianglairuun I Siangsangrunn level in kanan a dihmi Sianghngakchiahna nih kanan in credit 3 hmuh a hau thiamthiam, a sangdeuhmi level cawnmi ah duh deuh ngai asi. Maryland I Sianghleiruun Ningcang nih Sianghngakchia hna 2011 asiloah cu hnu ah Tang 9 a lutni hna caah kumli chung peh thliahmahmi kawleih sianginn kanan a herhmi caah luhnak dun le dan a thlen. Luhnak a herh timi caah naa ruah chanmi kawleih asiloah sianghleiruun pakhat cio kha checkhna.

\*\* Sianghngakchia hna Sianglairuun Sianginn I tuanmi cung zoh in French I asiloah Spanish I in credit a hmumi hna nih prokrem I thim khawhmi caah Vulei Pumpi Holh in a tlom bik ah credit 2 hmuh thiam thiam a hau.

\*\*\* Sianghngakchia hna nih ASL I le II kha herhmi hmuh khawh dingah dih hrim a hau. Hi cawn awk hna nih hin Sianghleiruun luhnak ca I a herhmi caah a tlinh khawh lo kho mi asi.

\*\*\*\* Kum 2013 le 2014 le cu pinlei I Tang 9 a lutmi sianghngakchiahna caah buaihlaknak ca I herhmi ban tuk te in camipuai hi rel piak a si lai.

## Algebra I

### Kanan Tuah Cinhnak Ca I Asinh

Kanan cinhnak ding ca I a sinh a fiantermi cu thiamnak phunphun asimi level kip I kanan chimtu hna nih an Sianghngakchia an than nak dingah an kawl hrimhrim a haumi kha a si kha a chim.

1. Aharmi kha hngal law teimakin a phi kawl. Reason abstractly and quantitatively.
2. Ruahnak suaithiam le tlawmtam tuakthiam.
3. Tuahkhawhmi a simi bialnakhna serthiam le midang chim duhnak kha khingthlaihna. Use appropriate tools strategically.
4. Kanan he muisam tuah
5. Aa tlakmi hriamnam timhtuahnak hmang.
6. Kanan lei I a har mi a phi hna kha hman te le fiang te in, aa tlakmi hmelchunhnak hmang, sullam chimnak, sisetnak mi tahnak he theinter.
7. Sak ning kha hmantlak in tuah le kawl.
8. Konglam nolhnak ah can hmanna langhter le kawl.

### Kanan Chungummi Asinhna

Kanan Chungum Asinhna (Abiapimi Cawnaw Tuahmi Ca) nih a zulhmi cu tuahning le hngalhning fonh thiamnak kaiter nak ah tuahmi kha asi. Biafang "hngalh" tiah aa thawkmi ruahchanhnak cu a chung I aa telmi ah kanan cinhnak pehnak ah can tha hna kha a bik in a si tonmi a si. Telhmi a sinh nih hngalhna ruah chanhnak a tuahmi cu a si khomi kanan chungtel asinh le kanan cinhnak hna karlak I "an I tonnak zonte" kha a si.

### Cawnnak 1: Aatluknak he Tlomtam le Ruahnak Hmanmi Karlak Pehtlaihnak

A harmi a phi kawl dingah tломtam ning in tuak le unit hman.

- Thil tining chungah unit kha thlenglo tein thim le sullam fianter: kraf le akong alam langhtertermi chungah tahnak le kokek asimi thim le sullam fianter.
- Zohchunhaw tuahmi kong chimmi tinhmi caah aa tlakmi tломtam kha sullam langhter.
- Tломtam kong chim tik I tahnak cung I ri khiahmi ah aa tlakmi hmanna level kha thim.

#### Langhternak sakning sullam fianter.

- Langhternak chung I kha sullam fianter, cu hna cu biafang, thil chuahtertu, le karhnak nambat hna kha an si.
- Ahmanmi thil pakhat bantuk in pakhat asiloah tamdeuh an mah le covo cio zohnak in aa cawhnhukmi langhternak kha sullam fianter.

### Ahrampi le nambat tling asimi sullam langhtertu he tuanti.

- Aa tlukmi langhternak nun ter awk ah sullam langhtertu nambat tling I aa ngeihmi hna kha hngalh le I hman.
- Aa thuatmi kapthum karhmi aa tluknak a phichuah hmuhmi aiawh ter dingah let nhiih kanan le let thum karh kanan hram hna kha hmanghna. A fa I a tlingmi lethnih karh kanan I lethnih karh kanan hram le a fa I a tling let thum karh kanan I let thum karh kanan hram hna kha khing thlai hna.

### Ruahnak in tuak khawhmi sullam langhtertu ah sullam langhtertu I aa ngeihmi samh.

- Zeitindah ruahnak in tuak khawhmi sullam langhtertu a sullam fiantertermi nih nambat tling sullam langhtertu I aa ngeihmi samhmi in cu hna a man ah a zulh ti kha fianternak tuah.
- Sullam langhtertu I aa ngeihmi hmang in a hrampi asimi le ruahnak in tuak khawhmi sullam fiantertermi aa telmi langhternak kha tial than.

### Aatluknak nambat asiloah pehtlaihnak a fiantertu kha ser.

- Aa thleng khomi pakhat chung in aa tlukmi le aa tluk lomi ser le a harmi a phi kawlnak caah ser.

### Ruahnak tuan cuahmah mi bantuk in aa tlukmi a phi kawl kha hngalh le ruahnak sullam fianter.

- Atlang ning zulh in tuahmi aa tluknak a phi kawlmi chung ah kawl ning pakhat cio kha fianter hna. Aphi chuah hmuhkhawhna thil tining dik ter nak dingah tuah khawh asimi anak kha ser.

### Aa thleng khomi pakhat chung I aa tlukmi le tluk lomi a phi kawl.

- Aa thleng khomi pakhat chung I a tlang ning zulh in tuahmi aa tluknak le tluk lomi a phi kawl, ca in aiawh mi karhnak nambat he aa tluknak telhin a phi kawl.

### Nambat a siloah pehtlaihnak chimmi aa tluknak kha ser.

- Amiak tлом tam hmuh ding tuahmi ah a tlang ning zulhmi thil rining kha mah sining in tuah than.

### Riantuannak ruahnak hngalh le riantuannak chinchiahnak tuahmi hman.

- Hngalh dingmi cu riantuannak nih a dikning ahcun thil pakhat cio ukmi cioah khan riantuan awk pek asi.
- Riantuannak hmahtahnak tuahmi hman, an ukmi chungah rawnmi caah riantuannak khingthlai le chimmi nih hnu hmai caah riantuannak I hmahtahnak tuahmi hmanmi sullam fianter.

### Nambat a siloah pehtlaihnak chimmi aa tluknak kha ser.

- Atlom tam karlak pehtlaihnak aiawh tu ah a tlang ning zulhin tuahmi aa tluknak kha ser.
- Cabenh le tahnak he ningcang phiat mi tuanti hnu tuahmi cung I aa tluknak kraf.

### Kraf ning in aa tluklomi le aatlukmi a phi kawl le aiawhter.

- Theih ding mi cu aa thleng khomi pahnih chung I aa tluknak kraf cu tuahmi ruanternak I hmun tete I a phi chuah kawlnak chiahmi a si.

### Nambat a siloah pehtlaihnak chimmi aa tluknak kha ser.

- A tlang ning zulhin tuahmi aa tluknak asiloah aa tluk lonak in le a tlang ning zulh in tuahmi aa tluknak le/asiloah aa tluk lonak ningcang in ri khiah piakmi thil aiawh ter.
- Ahnu hmai zohchunh awk tuahmi I thim khawhmi a si khomi tuah awk tinhmi le a si kho lo mi ban tuk in a phi kawl chuahnak a sullam fianter.

# Algebra I Cawnmi Kongchimnak

## Cawnnak 2: Catlang Ding le Kanan Alet Pethlaihnhakna

### Riantuannak ruahnak hngalh le riantuannak hman ningcang.

- Aa chang te in a hun I zulmi cu riantuannak asi, a can ah peh zulh in can than lengmangnak a sullam fianter, cu a uktu cu nanbat tling a niam deuhmi chiahmi a si ti kha hngalh khawh I zuam.

### A tlom tam pahnih karlak Pehlaihnhak zoh chunhawk tuahmi riantuannak sak.

- Piang tein langhtermi, hnu lei kuaih in tuah cuahmah, asiloah a hnu hmai in tuankannak caah lam hna kha bia khiah.
- Kanan riantuannak hmang in a sinh ummi riantuannak phun kha cawhchih.
- Arithmetic kanan le geometric kanan aa chang in a hun I zulmi pahnih hnu lei kuaihmi in tial cun piang tein chimmi ningcang he zoh chunh awk tuahmi acangmi he hman, cun muisam pahnih karlak hna kha sullam fianter.

### Catlang ding le kanan a let zoh chunh awk tuahmi tahchunh le ser cun a harmi a phi kawl.

- Catlang ding riantuannak le kanan a let riantuannak he thil a cangmi zoh chunh awk tuah khawh asimi karlak hna kha then hna.
  - Catlang ding riantuannak cu aa tlukmi karlak can cung i aa tlukmi aa dannak in a thang ti kha tehte langhter; kanan a let riantuannak cu aa tlukmi karlan cung I aa tlukmi thil a canter tu in a thang ti kha the te langhter
  - Thil a cangmi aa thleng lomi a zat unit pakhat ah karlak can a dang I aa pehmi ah a tam tlom pakhat aa thlengmi kha hngal.
  - Thil a cangmi aa thleng lomi a zat unit pakhat ah karlak can a dang I aa pehmi in a tam a tlom I a thangmi asiloah a tum chukmi kha hngal. Kraf, an I pehlaihnhak bia in fianternak, asiloah fainternak caah suaimi pekmi a dingmi ca tlang le kanan a let hna kha ser hna.

### Adingmi catlang le kanan a let riantuannak hnu hmai ummi bia a simi chungah hmanna a chuakmi sullam fianter.

- Tam tlom asimi chung in fianter ding suaimi le kraf riantuannak a biapimi a hmai kha sullam fianter le kraf a tung tlang longsui.
- Amah a kraf ah riantuannak nih ukmi le tlom tam asimi pehlaihnhak fiantermi ah aa tlakmi kha pehter hna.
- Adik hliar in karlak caan langhtermi riantuannak aa thlengmi buaktlak a zat tuak le sullam fianter. Kraf in aa thlengmi a zat kha tuak.

### Adang dang aiawnhak hmang in adingmi ca tlang le kanan a let riantuannak zoh cikcek.

- Adingmi catlang le kanan a let riantuannak hmelchunhnak in langhtermi kraf tuah le kraf I a biapimi hmai langhter.
- Riantuannak pahnih lam dang dang langhtermi nih aa ngeihmi hna kha tahchunh hna.

### Aummi riantuannak in riantuannak a thar sak.

- A dik hliami k a man (aummi le um lomi) caah  $f(x) + k$ ,  $k f(x)$  in thlenmi kraf  $f(x)$ ,  $f(kx)$ , le  $f(x + k)$  hnorsuannak kha hmuhsak.
- Kraf pekmi k I a man kha kawl.

## Zohchunhawk tuahmi thil a cangmi chung I riantuannak caah caah langhternak sullam fianter.

- Adingmi catlang siloah hnu hmai bia a cangmi chung I kanan a let riantuannak a cannak bomtu asullam fianter.

### Aa thleng khomi a tam tlom cung I akong alam sullam fianter, a tawinak in tuah le aiawh ter.

- Aa thek dihi hmun tete cung I aa thleng khomi a tam tlom pahnih cung I akong a kan aiawh ter, le aa thleng khomi hna kha zeitin an I pehlaih ti kha fianter.
  - Akong alam ah riantuannak rupter; Akong alam chung I a harmi a phi kawl dingah akong alam ah aa rupmi riantuannak hman.
  - Atangmi zoh cikceknak le hmu tete a longmi in adingmi catlang riantuannak I aa rupmi phungpahi um theng lo in khingthlainak tuah.
  - Aa thek dihi hmun long tete adingmi catlang he aa bommi nih a ruahnak pekmi caah adingmi catlang riantuannak rupter.

### Adingmi catlang zohchunhawk tuahmi hna kha asullam fianter hna.

- Akong alam I hnu hmai thil a cangmi I zoh chunhawk tuahmi a dingmi catlang a karlak I rak tlaihmi le azaumi asullam fianter.
- Adingmi catlang aa rupmi karnak nambat fonh tonhnak kanan in tuak le sullam fianter.
- Fonhtonhnak le konglam chuahternak karlak then.

### Aatluknak ningcanghna i phi kawl.

- Aa raumi adingmi catlang aa tluknak I khuah zoh cikcek le a phi kawl.
  - Hngalh cingmi cu an I tonnak zon te I an kraf ah aa thleng khomi pahnih aa tlakmi chung I adingmi catlang aa tluknak pahnih ningcang ah a phi chuah kawlnak kha hngal.
  - Kanan algebra ning in aa thleng khomi pahnih I adingmi catlang aa tluknak pahnih ningcang a phi kawl le aa tluknak kraf tuahmi in a phi chuah kawlnak tuak.
  - Atak vulei le kanan a harmi aa thleng khomi pahnih chung I ading micatlang aa tluknak pahnih ah a hruaimi kha a phi kawl.
- Adingmi catlang aa tluknak dik ciah te le hronghrang ningcang kha a phi kawl.

### Aatluknak le tluk lonak kraf ning in aiawh ter le a phi kawl.

- Zeiruangah kraf aa tluknak zon I  $x - kraf$  cung nambat tialnak  $y = f(x)$  le  $y = g(x)$  an I tonnak cu  $f(x) = g(x)$  aa tluknak a phi chuah kawlnak a si ti kha fianter.
- Acheu-a ronmi bantuk in aa thleng khomi pahnih chung I adingmi catlang aa khah lonak ah a phi chuah kawlnak kraf tuah.
- A cheu-a ronmi aa khatmi I aa tonnak bantuk in aa thleng khomi pahnih adding catlang aa tluklomi ningcang ah a phi kawl chuahnak tuahmi kraf tuah.

## Cawnnak 3: Bia in Fiantermi le Cazin Tuah Thiannak

**Relmi pakhat asiloah aa thleng khomi tahnak cung I akong alam tawiter, aiawh ter, le a sullam fianter.**

- Atak nambat callang (dehmi hmun tete, rinmi, le bom hmun tete) cung I hmun tete he akong alam aiawhter.
- Alaifang le a dangmi tuahmi pahnih asiloah tamdeuh samhmi tahchunhmi ah akong alam phot zammi muisam ah aa tlakmi cazin tuah thiamnak hman.
- Akong alam tuahmi pongkam, a cang khomi akong alam zon asi lepekmi I hnorsuannak a cang khomi caah cazin chung I pungsan, a laifang, le samhmi aa dannak sullam fianter.

**Afiang I a tliangmi pahnih le a tam tlom asimi aa thleng khomi cung I akong alam tawiter, aiawh ter le sullam fianter.**

- Afiannak ding I suaimi zaya a can lengmangnak lam hnih caah akong alam a fiang I a tliang mi a tawi nak in tuah.
- Akong alam hnu hmai a cangmi an I pehtlaihna a sullam fianter.

## Cawnnak 4: Aa Thuatmi Riantuannakhna le Zohchunhawk Tuahmi

**Polynomial timi kanan rinmi cung I arithmetic kanan riantuannak tuah.**

- Theihding mi cu hi polynomial timi kanan rinmi cu chapchihnak, zuhnak, le karhnak riantuannak tangah rikhiahi a si.
- Polynomial timi kanan rinmi fonh, zuhm le karhnak tuah

**A tam tlom pahnih karlak pehtlaihna zohchunhawk tuahmi riantuannak sak.**

- Aa thuatmi riantuannak a tam tlom pahnih karlak pehtlaihna a fiantertu tial.

**Aiawhnak dangdang hmang in riantuannak zokcikcek.**

- Adingmi catlang le aa thuatmi riantuannak kraf tuah le karlak raktanmi, a tambik, le a tlombik langhter.

**Riantuannak a hnuhmai acangmi chung I hmanmi a chuahtertu a sullam fianter.**

- Aa thuatmi riantuannak ca I a tam tlom pahnih karlak pehtlaihna zohchunhawk tuah, a tam tlom a cangmi chung I tlangrin zaya le kraf a biapimi hmai I a sullam kha fianter, le kraf a hmai biapimi langhter pehtlaihna bia in fiantermi pekmi a tung tlang suai.
- Amah kraf I a riantuannak ukmi a bia fiantermi a tam tlom pehtlaihna ah pehter.

**Langhternak sakning a sullam fianter.**

- Aa thuatmi langhternak a hnu hmai cangmi chungah a tam tlom aiawhmi kha sullam fianter.
  - Langhternak chung I a simi biafang, thil a chuahtertu, le karhnak nambat a sullam fianter.
  - Ahmanmi thil pakhat bantuk in an chungtel pakhat asiloah tamdeuh zohnak in langhnak a hnokmi kha sullam fianter.
- Tialthan dingah a lam hna kha hmuhsak dingah langhternak hmuhsakmi kha hmang.

**Aharmi a phi kawl dingah aa tlukmi muisam in langhternak tial.**

- Langhternak a aiawhmi a tlom tam nih a ngeihmi langhter le fianter awk ah langhternak aa tlukmi muisam thim le tuah.
  - Asullam fiantermi riantuannak zero phuanawk ah aa thuatmi langhter chuahter tu tuah.
  - Asullam fiantermi riantuannak a man a tambik le tlombikmi phuan awk ah aa thuatmi langhternak I killi cio tahmi kha tlinter.

**Aa thleng khomi pakhat chung I aa tluknak le tluklonak a phi kawl.**

- Aa thleng khomi pakhat I aa thuatnak aa tlukmi a phi kawl.
- Zei bantuk aa thuatnak I aa tluknak I x kha aa tluknak muisam a simi  $(x - p)^2 = q$  nih aphi chuah kawlnak aa lomi a ngeihmi chungah thlen dingah killi cio tahmi tlin ternak tuah dank ha hmang. Hi muisam hin aa thuatmi tuah ningcang a hramin lak.
- Tha tein zohnak in let hnih kanan hram, killi cio tahmi tlinter, aa thuatmi tuah ningcang le thil can termi in aa thuatmi aa tluknak kha a phi kawl.

**Aiawhnak dangdang hmang in riantuannak zohcikceknak tuah.**

- Zero, aman tamtukmi, le kraf I ningcang te ngetnak hmuhsak dingah aa thuatmi riantuannak I killi cio tahmi tlin ter le thil a chuahtermi tuah cuahmah mi kha hmang cun hnu hmai I a cangmi chung I a sullam kha fianter.



# Zohchunhawk Lakmi Hnesaknak

Algebra I caah PARCC then hnih a um lai. A pakhatnak cu Khingthlainak Cung I Tuahmi (PBA) le a pahnihnak cu Kumdonghle i Khingthlainak (EOY) an si hna. PBA camipuai cungah, an catang level caah thiamnak le hngalhnak a biapimi aa telmi a harmi a phi kawl dingah sianghngakchia hna kha hal an si lai, kanan lei he pehtlaihmi sining langhter, kanan lei biaalnak sak, cun a phi chuah khawh dingah ruahning I hman, cu a cang I a har mi kha pungsan tuah a si lai. EOY camipuai cungah, computer hram asimi, set hmak hmuh khawhmi a simi biahalnak a phi pek in ngeih khawh mi thiamnak le hngalhnak kha sianghngakchia hna nih langhter a si lai. Sianghngakchia I komhmi hmuhmi khingthlainak hmak chuahter nak dingah a phi chuak pahnih hna hi fonh a si lai. Thenmi pahnih camipuai cung I thil nih a harmi cawhmi a tanglei hna hi khing a thlai lai:

- Ruahnak he pehtlaihmi hngalhtiamnak
- Ningcang in thil tuahmi he pehtlaihmi nal tein chim thiamnak
- Hmannak

## Rian Aphun

- Phun I: ruahnak, thiamnak le tuah ning hna khing thlaimi rian.
- Phun II: kanan ruahnak langhter mi khingthlaimi rian.
- Phun III: pungsan le hmanna khingthlaimi rian.

## Phun Khat nak Rianhna

### Zohchunhawk I tuahmi #1

Atanglei aa khatmi hi a phi chuah:

$$(3x - 2)^2 = 6x - 4$$

Na dih tikah, a tanglei a phi hi luhter.

Aphi:1

$$\frac{\square}{\square}$$

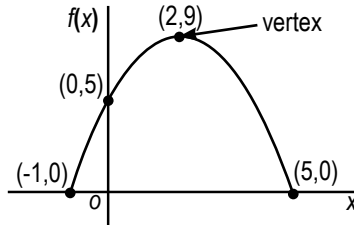
A dang a phi luh ter nak dingah Hmeh hi hmeh

asiloah

Tuahthan

### Zohchunhawk I tuahmi #2

Aa tuahmi tuah hnga ding mi  $f(x)$  I a then cu a rawnmi xy cungah a hmuhsak. Aa tlang in tuahmi tuah hnga dingmi  $g(x)$  thimmi man cu rin mi cungah a hmuhsak.



x	g(x)
-4	7
-1	1
2	-5
5	-11

A tanglei thlaichunhnak pakhat cio caah, a tam tlom pakhat nak le pahnihnak pehtlaihnak karlak hman tein hmuhsak mi hmelchunhnak thim dingah a tanglei menu hi hmang.

A Pakhatnak Azat	Thlaichunhnak	A Pahnihnak Azat
Y raktanmi $f(x)$ asimi i Y ruantermi	<input type="text" value=""/>	Y raktanmi $g(x)$ asimi i Y ruantermi
$f(3)$	<input type="text" value=""/>	$g(3)$
Akarlak hmun $-5s \times s5$ cung I $f(x)$ a tambil a man	<input type="text" value=""/>	Akarlak hmun $-5s \times s5$ cung I $g(x)$ a tambil a man
$\frac{f(5) - f(2)}{5 - 2}$	<input type="text" value=""/>	$\frac{g(5) - g(2)}{5 - 2}$

# Zohchunhawk Lakmi Hnesaknak Biahalnakhna

## Phun II Rianhna

### Zohchunhawk I tuahmi

Myla I a ti leuhnakh nih a khah tikah ti kaalan 16,000 a tlum. Ni li ni ah, a ti leuhnakh kha a cheu chum long a khat. Ni nga ni ah, Myla nih minit pakhat ah kaalan 10 tluk in a luangmi khairiat ti pep kha hmang in ti khah ter a timh. Ti khah ter dingah suimilam panga chung a rau.

### Then A

Biatlang dih ter dingah bom pakhat cio chungah hin, nambat kha tial hna.

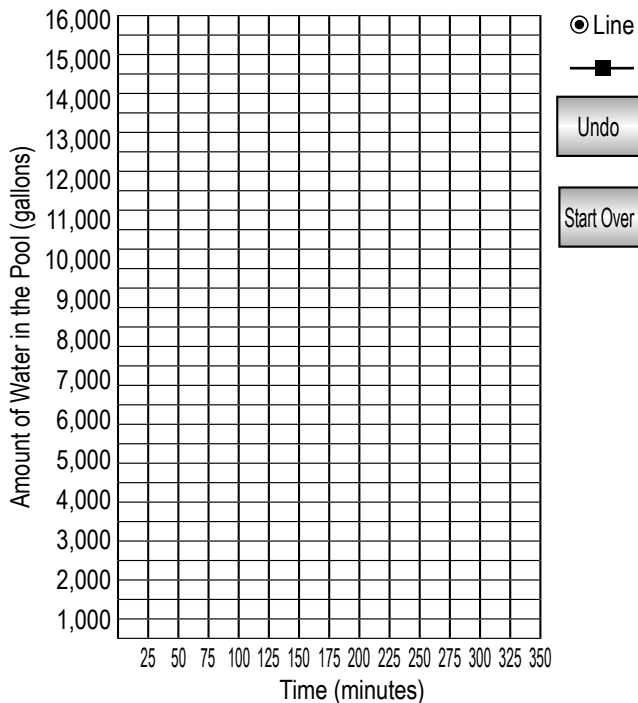
Myla nih ti leuhnakh chung ah ti a khah ter hlan ah ti  kaalan. long a um.

Ti leuhnakh chung ti fonh chih hnu I a zat cu suimilam  pakhat ah Long a si.

### Then B

Arawnmi hmunkhat I suaimi pekmi cungah hin, Myla nih ni nga ni ah khaan a ti leuhnakh chung ah ti khah ter dingah a can, minit a hmanmi pekmi nih hin Myla I a ti leuhnakh chung I a ti kaalan a zat kha hi graf suaimi nih hin a ai aw.

Arawnmi ruantermi a par pahnih thim law, cattlang rinmi nih a ngeihmi a par pahnih kha a ah te in aa suai ko lai. Adongnak step kha "tuah than lo" timi hmeh law tuah than lo in na um than kho ko. Tuah than na duh ah cun "thawk than."



## Phun III nak Rianhna

### Zohchunhawk I tuahmi

Khuachung kokti celhnakh cawnding ah minung pakhat nih rongkhat celh dingah \$5 hal a si I zarh khat ah cung rong 120 a zuar. Hi kokti cawnmi I manager nih hin ngunkhuai karh ter dingah a man san ter deuh ding kha a cawn I a tanglei a kong a lam hna hi a hmuh mi cu an si.

Hi suaimi nih hin, aman in a dangdang nambat a simi \$0.25 kaih ter dingah a man, kokti round zeizat, le zarh tin ngunkhuai hna kha a hmuhsak hna.

Nambat \$0.25 asimi a man karhter, n	0	1	2	3	4
Kokti velkhat man, p(n)	\$5.00	\$5.25	\$5.50	\$5.75	\$6.00
Kokti a vel zuarmi a zat, s(n)	120	117	114	111	108
Zarhtin ngunkhuai man, r(n)	\$600	\$614.25	\$627	\$638.25	\$648

### Then A

Akong alam tialmi cung zoh in, kokti velkhat a man p(n), (n) in chimah cun, nambat \$0.25 a karhmi zohchunh ding tuah dingah, tuah hnga ding a simi a tlang ning zulh in tuahmi kha tial.

Akong alam tialmi cung zoh in, zarkhat chungah kokti a vel zuarmi a zat, s(n), (n) in chimah cun, nambat \$0.25 a karhmi zohchunh ding tuah dingah, tuah hnga ding a simi a tlang ning zulh in tuahmi kha tial.

### Then B

Akong alam tialmi cung zoh in, zarh khat chung I zarhtin te ngunkhuai, (n) in chimah cun, nambat \$0.25 a karhmi caah, aa thuatmi tuah hnga ding a simi tial.

Ticket a man \$6.25 asi tik ah, zarh khat chung I zarh tin te ngunkhuai biakhiah dingah, aa thuatmi na tuah hnga dingmi kha tial.

### Then C

Aman karhter lo mi he, zarhtin ngunkhuai nak in, a tambik a si khomi ngunkhuai zarhtin ah ze percent hi dah a ngan deuh? Algebra kanan ning in a siloah a fiang mi in na phi kha thiamcoter.



Sianginn I Cawnmi hlawhtlinnak caah na fa fimthiam cawnnak than ter ding naa telnak a biapi tukmi asi. Hnesaknak cu na fa I a thanchonak kap KHAT te long aiawhmi a si. Sianginn I cawnmi poah ah na fa a tlamtlinnak hngalh, tha pek, le hlorh nih na fa kha a bomh tuk hringranmi a si.

**BUAKTLAK IN HNESAKMI-NU LE PA CAAH FIMCHINNAK LAKDINGMI**

Na fa nih:

- Camipuai hlan zan ah na fa nih mitkuh vuai ding.
- Camipuai zingah zingrawl ei ding.
- Aa nuammi zing siding - chungkhar I siknak hrial ding.
- Acan tuahmi he inn ah tuah lengmang – inn ah tuahding ca tuah, I celh, rian hmetete tuan.
- Camipuai hlan deuh te I dinh khawh dingah Sianginn tuante phak.

**HLAWHTLINNAK THAZANG PEK**

- Na fa caah ruahchanhnak sangpi chiah.
- Na fian ding cu Sianginn cu na fa I a pakhatnak I thimmi hmun asi.
- Na fa ca a zoh nak dingah a daihnak hmun tuahpiak.
- Na fa iin i tuahding a ca bomh.
- Na fa a Sianginn rian ah thathawhnak langhter.
- Na fa nih TV a zohmi rikhiah piak.
- Na fa kha zuamnak lei a simi cawnawk lak ding thazang pe.

**HNESAKNAK LAK**

Na fa kha thazang pe:

- A thami in nung.
- Hmuhtonmi thil kha zuamnak ah ruah.
- Sawhpiaknak ralring tein rel.
- Halmi biakhiah dingah le abiapimi biafang zoh dingah biafang biahalnak kha tha tein zoh.
- Biahalnak poah leh I zuam lung dong lo in.
- Kir than law na tuah ding kha zoh than hna.
- A tlingmi catlang in tial le na ruahmi fianter lioad a tling te in tuah. Biahalnak kip kha tling tein phi hna.

**www.hcpss.org**

Hi hi Howard County Zapi Sianginn Ningcang caah web site I biapimi hmuhkhawhnak hmun asi.

Khingthlainak thongthanhnak caah Camipuai Hmak Hmuhmi tiah aa tialmi zon te hi hmet.

**Hcpssfamilymath.weebly.com**

Hi hi HCPSS Chungkhar Kanan Bomhmi Center Website a si. Kanan I fian nak le theih hngalhnak bomtu dingah, nu le pa le sianghngakchia hna nih man ngeimi bomtu thilhna kha hmuh khawh a si.

**www.marylandpublicschools.org/msde**

This is the homepage for theHi hi Fimcawnnak Maryland Peng Bu caah web site abiapimi umnak hmuhkhawhnak hmun asi.Nu le pa nih fa le bomhnak kong thongthanhnak hmuhkhawh dingah timi aa tialmi cung ah hmet.

**www.mdk12.org**

Ca chim tu hna le nu le pa hna nih peng camipuai kong fiandeuhnak ding bomhnak dingah Maryland Web site chung I tuahnak lei thongthanhnak le thilri telmi nih hin Sianginn Athanter. Hi ka hin HSA le Maryland Sianginn Khingthlainak kong thongthanhnak na hmuh khawh hna.

**www.hsaexam.org**

Siangsangruun Sianginn Khingthlainak web site nih thongthanhnak Siangsangruun Sianginn Khingthlainak cung thengte zeitindah Sianghngkchiahna kha khingthlai an si, le algebra/akong alam zoh cikcekmi I tahchunhnak le zohchunhawk tuahmi camipuai, biology, Mirangca, le American Cozah kong tampi angeih.

**www.mdreportcard.org**

Hi hi cu Maryland Sianginn Tuahmi Thanhnak, peng camipuai I hmuhmi hmak telh in online in lehmi asi.





10910 Clarksville Pike • Ellicott City, MD 21042  
410-313-6600 • [www.hcpss.org](http://www.hcpss.org)

Howard County Zapi Kainak Sianginn nih phun, rong, biaknak, miphun hramthawknak, taksapum/ruahnak lei tling lo mi, kum, nu le pa thleidannak, letthah cang mi sinak, nu/pa lei kap hoih in tanhnak riantuannak hnorsuan ter a si lo le l tuahding mi pakhatkhat ah luhnak lam siam piak ti ban tuk ah khan a thleidang lo. Title IX sokhlua kong biahalnak kongah, chimh dingah Title IX Coordinator, Equity Assurance Office of the Howard County Public School System ah chawnhkhawh a si l a umnak cu 10910 Clarksville Pike, Ellicott City, MD 21042 ah asiloahPhone Nambur 410-313-6654 ah auhkhawh a si.

Hi "Na Fa Nih Zeidah Acawn Lai" timi Chungkhar Lamhrainakhna cu HCPSS website a simi  
[www.hcpss.org/academics/learnguides.shtml](http://www.hcpss.org/academics/learnguides.shtml) ah hmuhkhawh asi.

**SMT.10.14**