

**BOARD OF EDUCATION OF HOWARD COUNTY
MEETING AGENDA ITEM**

TITLE: 2013 Maryland School Assessment Results Report **DATE:** October 10, 2013

PRESENTER(S): E. Grace Chesney
Chief Accountability Officer

OVERVIEW:

The Maryland School Assessment (MSA) is a state-mandated testing program designed to comply with the federal No Child Left Behind Act of 2001 (NCLB). The Reading and Mathematics MSAs are administered in Grades 3 to 8, and the Science MSA is administered in Grades 5 and 8.

At the elementary school level, 93.9 percent of HCPSS students scored at the proficient or advanced level in reading compared to 86.4 percent of students statewide. In mathematics, 92.2 percent of students scored proficient or advanced compared to 83.9 percent of students across the state. In science, 79.1 percent of students scored proficient or advanced compared to 67.0 percent of students across the state.

At the middle school level, 91.6 percent of HCPSS students scored at the proficient or advanced levels in reading compared to 83.4 percent of students statewide. In mathematics, 84.2 percent of HCPSS students scored proficient or advanced compared to 72.3 percent of students across the state. In science, 87.3 percent of students scored proficient or advanced compared to 71.4 percent of students across the state.

Over the course of the 10 years that the MSA has been administered, trend data show an increase over time for all students. Most notably is the increase of students now performing at the advanced level on the MSA. While MSA scores in HCPSS did decline from 2012 to 2013, this decline was noted throughout the state. Despite the strong performance of students overall, gaps persist for several student groups.

RECOMMENDATION/FUTURE DIRECTION:

Targeted and aligned work needs to continue to address gaps between student groups and ensure that all students are receiving a world class educational experience preparing them for career and college success.

Submitted by: _____
E. Grace Chesney
Chief Accountability Officer

Approval/Concurrence: _____
Renee A. Foose, Ed.D.
Superintendent

Background

The Maryland School Assessment (MSA) is a state-mandated testing program designed to comply with the federal No Child Left Behind Act of 2001 (NCLB). The Reading and Mathematics MSAs are administered in Grades 3 to 8, and the Science MSA is administered in Grades 5 and 8. MSA results are reported as scaled scores and banded in three proficiency levels: Basic, Proficient, and Advanced.

This report provides an analysis of performance on the MSA by school level, student group, content area, for the district overall, and in comparison with neighboring districts. Information by school is included in the appendices (Appendices A10 and A11). With the current overall performance rates and the system's focus on college and career readiness, this report highlights not only the proficiency rates, but also the percentages of students achieving scores in the advanced range. The report concludes with considerations and recommendations for next steps.

Overview of 2013 MSA Results

At the elementary school level, 93.9 percent of HCPSS students scored at the proficient or advanced level in reading compared to 86.4 percent of students statewide. In mathematics, 92.2 percent of students scored proficient or advanced compared to 83.9 percent of students across the state. In science, 79.1 percent of students scored proficient or advanced compared to 67.0 percent of students across the state (Table 1).

At the middle school level, 91.6 percent of HCPSS students scored at the proficient or advanced levels in reading compared to 83.4 percent of students statewide. In mathematics, 84.2 percent of HCPSS students scored proficient or advanced compared to 72.3 percent of students across the state. In science, 87.3 percent of students scored proficient or advanced compared to 71.4 percent of students across the state (Table 1).

Table 1
Percent of Elementary and Middle School Students Scoring at the Proficient or Advanced Levels for Reading, Mathematics and Science on the MSAs and Mod-MSAs, 2011 to 2013 at the District and State Level

Level	LEA/SEA	Content	Percent Proficient or Advanced		
			2011	2012	2013*
ES	HCPSS	Reading	94.0	94.1	93.9
		Mathematics	92.7	93.8	92.2
		Science	76.7	78.3	79.1
	Maryland Public Schools	Reading	88.0	88.2	86.4
		Mathematics	86.3	87.7	83.9
		Science	66.8	68.5	67.0
MS	HCPSS	Reading	92.6	90.9	91.6
		Mathematics	87.3	89.1	84.2
		Science	87.1	86.4	87.3
	Maryland Public Schools	Reading	83.5	82.1	83.4
		Mathematics	73.7	76.2	72.3
		Science	69.5	70.7	71.4

Note: Change is calculated from unrounded values and then rounded to the nearest tenth of a percentage point.

LEA = Local Education Agency; SEA = State Education Agency.

*MSDE did not administer the Reading and Math Mod-MSA in 2013.

The percent of students performing at the proficient or advanced levels has steadily increased from 2003 to 2013. Elementary reading has increased 12.1 percentage points from 2003 to 2013. Elementary math has increased 11.3 percentage points. Middle school reading has increased 10.9 percentage points. Middle school math has increased 21.4 percentage points. The increase for elementary and middle school science has been more subtle, increasing 1.1 and 4.5 percentage points, respectively from 2007 to 2013. Despite the increases over the past 10 years of MSA administration, it is noteworthy that from 2012 to 2013, only science (elementary and middle) and middle school reading showed an increase in the percentage of students scoring proficient or advanced (Table 2). Across the state, declines from 2012 to 2013 were noted in all three content areas for elementary and middle school math (Table 1). The change to teaching Common Core State Standard curriculum and the discontinuation of using the Modified Maryland School Assessment (Mod-MSA) both were likely contributors to this isolated change in an otherwise 10-year upward data trend. For the percentage of HCPSS elementary and middle school students scoring proficient or advanced by grade level, see Appendix A1.

Table 2
Percent of Elementary and Middle School Students Scoring at the Proficient or Advanced Level
for Reading, Mathematics and Science on the MSAs and Mod-MSAs, 2003 to 2013

		Percent Proficient or Advanced											Change in Proficiency Rates Since Baseline**
Level	Content	2003	2004	2005	2006	2007	2008	2009	2010	2011	2012	2013*	
ES	Reading	81.8	88.4	89.7	89.4	90.2	92.8	93.0	92.8	94.0	94.1	93.9	12.1
	Math	80.9	84.9	86.6	88.3	88.6	89.6	89.6	91.7	92.7	93.8	92.2	11.3
	Science					78.0	77.5	76.4	78.5	76.7	78.3	79.1	1.1
MS	Reading	80.7	84.8	86.6	86.5	85.0	89.1	91.4	90.8	92.6	90.9	91.6	10.9
	Math	62.9	68.5	76.7	80.3	80.6	83.6	86.9	87.1	87.3	89.1	84.2	21.4
	Science					82.8	82.9	85.6	86.4	87.1	86.4	87.3	4.5

Note: Change is calculated from unrounded values and then rounded to the nearest tenth of a percentage point.

*MSDE did not administer the Reading and Math Mod-MSA in 2013.

**Beginning in 2009, Reading and Math Mod-MSA assessments were administered to eligible students receiving special education services in Grades 6, 7, and 8 and are included in 2009-2012 statistics. Beginning in 2010, Reading and Math Mod-MSA assessments were administered to eligible students receiving special education services in Grades 3, 4, and 5 and are included in 2010-2012 statistics.

***MSDE did not administer the MSA in Grades 4, 6, and 7 in 2003; therefore, gains for these grade levels are measured from 2004.

****MSDE did not administer the Science MSA until 2007; therefore, gains for the Science MSA are measured from 2007.

***** Common Core State Curriculum implemented throughout system, 2013.

In reading, 53.0 percent of elementary school students and 61.8 percent of middle school students who took the MSA scored at the advanced level. In mathematics, 49.7 percent of elementary school students and 43.3 percent of middle school students scored at the advanced level. In science, 14.7 percent of elementary school students and 14.0 percent of middle school students scored at the advanced level (Figures 1 and 2, Appendix A2).

The percent of elementary and middle school students performing at the advanced level has steadily increased from 2003 to 2013. Elementary reading has increased 19.6 percentage points from 2003 to 2013. Elementary math has increased 22.5 percentage points. Middle school reading has increased 15.6 percentage points. Middle school math has increased 17.5 percentage points. The increase for elementary and middle school science has been more subtle, increasing 1.2 and 4.9 percentage points, respectively from 2007 to 2013 (Figures 1 and 2). Of note is that from 2012 to 2013, only reading (elementary and middle) showed an increase in the percent of students scoring advanced. For the percentage of HCPSS elementary and middle school students scoring advanced by grade, see Appendix A3.

Figure 1. Percent of Elementary School Students Scoring at the Advanced Level for Reading, Mathematics and Science on the MSAs and Mod-MSAs, 2003 to 2013

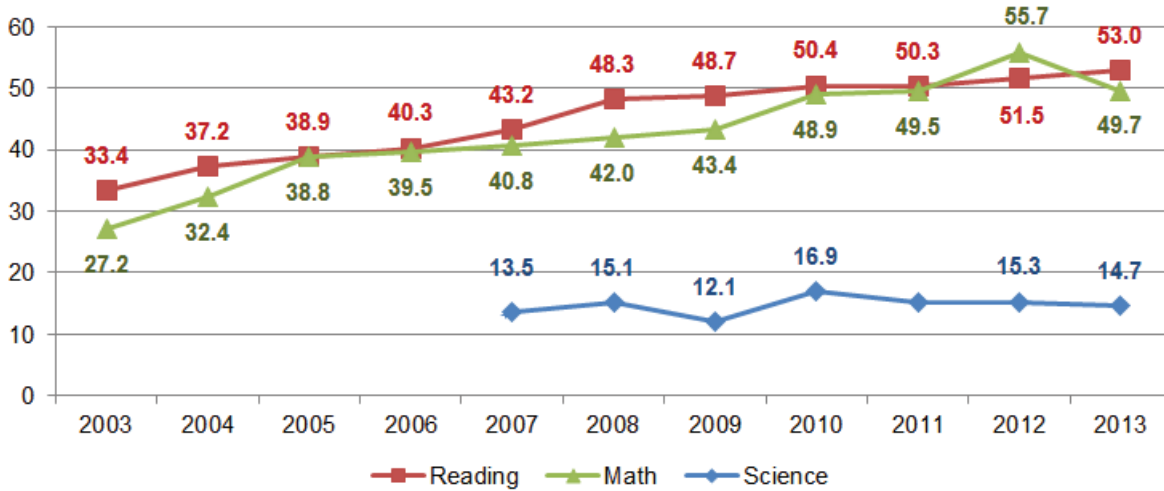
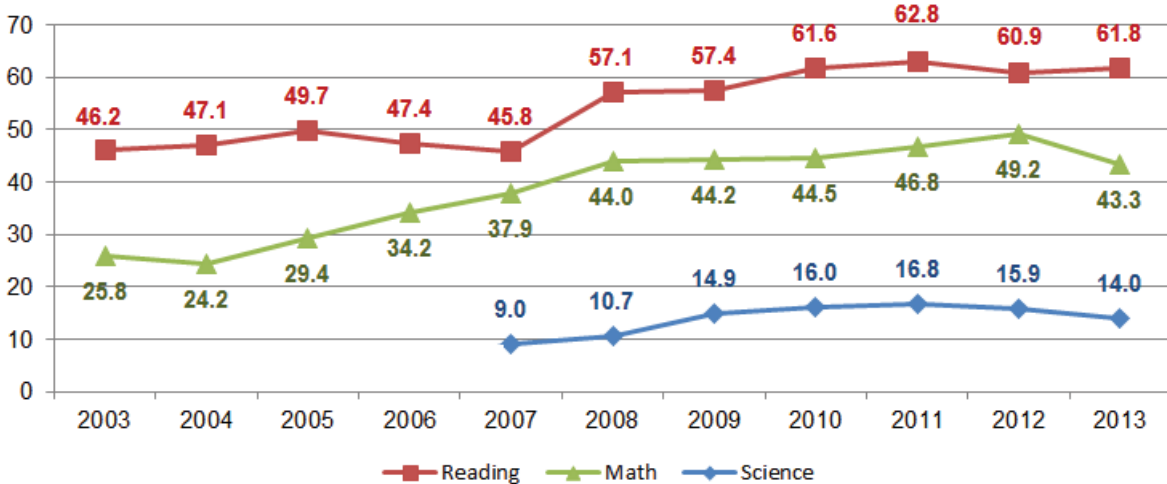


Figure 2. Percent of Middle School Students Scoring at the Advanced Level for Reading, Mathematics and Science on the MSAs and Mod-MSAs, 2003 to 2013



Student Group - Race/Ethnicity

In 2013, the reading proficiency rates for all racial/ethnic groups were at or above 86.6 percent at the elementary level and at or above 82.0 percent at the middle school level. Racial/ethnic groups that attained proficiency rates at or above 95 percent in reading were Asian, Two or More Races, and White at the elementary school level, and Asian and White at the middle school level (Tables 3 and 4).

The math proficiency rates for all racial/ethnic groups were at or above 82.2 percent at the elementary level and at or above 65.5 percent at the middle school level. Racial/ethnic groups that attained proficiency rates at or above 95 percent in math were Asian and White at the elementary school level. Asians were the highest performing student group in middle school math, with 94.5 percent of students attaining proficiency (Table 3).

The science proficiency rates for all racial/ethnic groups were at or above 58.8 percent at the elementary level and at or above 71.5 percent at the middle school level. Asians were the highest performing student group in elementary school science, with 88.8 percent of students attaining proficiency. Whites were the highest performing student group in middle school science, with 94.3 percent of students attaining proficiency (Table 3).

At the elementary level, students in all racial/ethnic groups showed declines in both reading and math in the percentage of students scoring proficient or advanced between 2012 and 2013; ranging from 0.2 to 5.4 percentage points. (Change in proficiency could not be calculated for groups that performed at or above 95 percent in either year.) See Appendix A4 for proficiency at the advanced level by racial/ethnic group at the elementary level.

At the middle school level, the decline in math proficiency by student group ranged from 3.1 to 9.7 percentage points (White and Hispanic groups, respectively). In middle school reading and science, all student groups showed increases in the percentage of students scoring proficient or advanced of 2 percentage points or lower, with the exception of Two or More Races, which showed a decline across the two years (Table 3). See Appendix A5 for proficiency at the advanced level by racial/ethnic group at the middle school level.

Table 3
Percent of Elementary School Students Scoring at the Proficient or Advanced Level
for Reading, Mathematics and Science on the MSAs and Mod-MSAs by Race/Ethnicity, 2010 to 2013

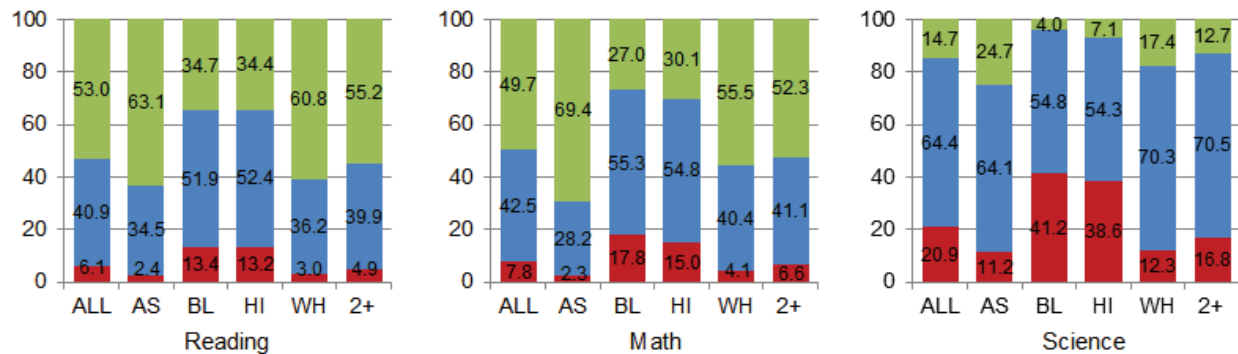
Level	Content	Race/Ethnicity	Percent Proficient or Advanced				1-Year Change
			2010	2011	2012	2013*	
ES	Reading	All Students	92.8	94.0	94.1	93.9	-0.2
		Asian	≥95.0	≥95.0	≥95.0	≥95.0	na
		Black/African American	83.2	86.5	87.1	86.6	-0.5
		Hispanic/Latino	88.1	87.3	87.9	86.8	-1.1
		Two or More Races	94.8	≥95.0	≥95.0	≥95.0	na
		White	≥95.0	≥95.0	≥95.0	≥95.0	na
	Math	All Students	91.7	92.7	93.8	92.2	-1.6
		Asian	≥95.0	≥95.0	≥95.0	≥95.0	na
		Black/African American	80.6	83.0	86.0	82.2	-3.8
		Hispanic/Latino	84.2	85.5	90.4	85.0	-5.4
		Two or More Races	93.0	≥95.0	≥95.0	93.4	na
		White	≥95.0	≥95.0	≥95.0	≥95.0	na
	Science	All Students	78.5	76.7	78.3	79.1	0.8
		Asian	85.0	85.3	86.8	88.8	2.0
		Black/African American	56.1	51.2	56.5	58.8	2.3
		Hispanic/Latino	66.7	56.4	63.1	61.4	-1.7
		Two or More Races	79.3	76.6	83.1	83.2	0.1
		White	88.4	88.2	88.0	87.7	-0.3

Note: Change is calculated from unrounded proficiency rates.

* MSDE did not administer the Reading and Math Mod-MSA in 2013.

**Beginning in 2009, Reading and Math Mod-MSA assessments were administered to eligible students receiving special education services in Grades 6, 7, and 8 and are included in 2009-2012 statistics. Beginning in 2010, Reading and Math Mod-MSA assessments were administered to eligible students receiving special education services in Grades 3, 4, and 5 and are included in 2010-2012 statistics.

Figure 3
Percent of Elementary School Students Scoring Basic, Proficient and Advanced on the Reading, Math and Science MSAs by Race/Ethnicity



Gaps between the highest performing (Asian, White) and lowest performing (Black/African American) student groups persist at both the elementary and middle school levels, for reading, math, and science. In 2013, the gap between the highest performing and lowest performing groups ranged from 8.4 percentage points (reading) to 30 percentage points (science), at the elementary level (Figure 3). At the middle school level, the gap ranged from 13 percentage points (reading) to 29 percentage points (math) (Figure 4). From 2010 to 2013, the gap narrowed at the elementary level for all three content areas, and for middle school science.

Table 4
Percent of Middle School Students Scoring at the Proficient or Advanced Level for Reading, Mathematics and Science on the MSAs and Mod-MSAs by Race/Ethnicity, 2010 to 2013

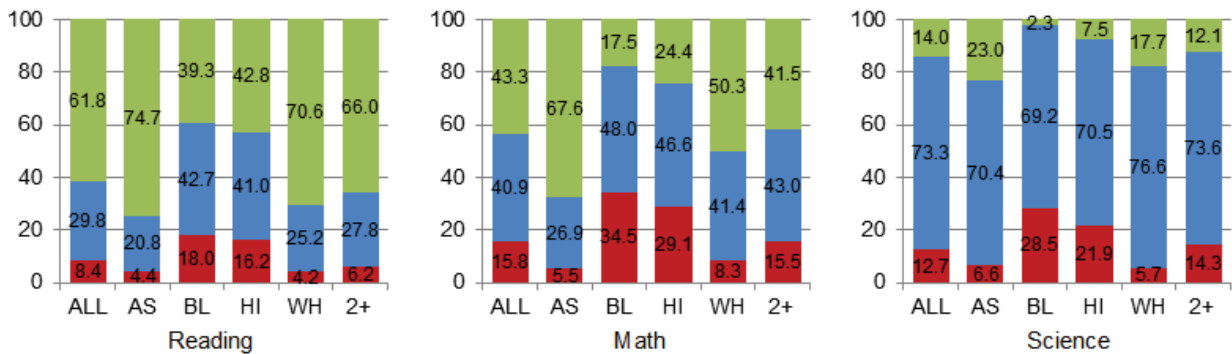
Level	Content	Race/Ethnicity	Percent Proficient or Advanced				1-Year Change
			2010	2011	2012	2013*	
MS	Reading	All Students	90.8	92.6	90.9	91.6	0.7
		Asian	≥95.0	≥95.0	94.8	≥95.0	na
		Black/African American	82.0	84.6	80.9	82.0	1.1
		Hispanic/Latino	84.4	87.7	82.0	83.8	1.8
		Two or More Races	92.8	94.8	94.4	93.8	-0.6
		White	94.0	≥95.0	≥95.0	≥95.0	na
	Math	All Students	87.1	87.3	89.1	84.2	-4.9
		Asian	≥95.0	≥95.0	≥95.0	94.5	na
		Black/African American	69.7	72.2	74.7	65.5	-9.2
		Hispanic/Latino	81.6	80.0	80.6	70.9	-9.7
		Two or More Races	87.6	87.0	90.1	84.5	-5.6
		White	92.4	92.7	94.8	91.7	-3.1
	Science	All Students	86.4	87.1	86.4	87.3	0.9
		Asian	91.1	94.5	91.8	93.4	1.6
		Black/African American	68.3	70.0	69.8	71.5	1.7
		Hispanic/Latino	77.0	81.6	77.3	78.1	0.8
		Two or More Races	84.5	86.9	93.2	85.7	-7.5
		White	93.7	92.9	93.5	94.3	0.8

Note: Change is calculated from unrounded proficiency rates.

*MSDE did not administer the Reading and Math Mod-MSA in 2013.

**Beginning in 2009, Reading and Math Mod-MSA assessments were administered to eligible students receiving special education services in Grades 6, 7, and 8 and are included in 2009-2012 statistics. Beginning in 2010, Reading and Math Mod-MSA assessments were administered to eligible students receiving special education services in Grades 3, 4, and 5 and are included in 2010-2012 statistics.

Figure 4
Percent of Middle School Students Scoring Basic, Proficient and Advanced on the Mathematics MSA by Race/Ethnicity



Student Group - Special Services

In 2013, the reading proficiency rates for all student service groups (LEP, FARMS, and special education) were at or above 69.5 percent at the elementary level and at or above 52.4 percent at the middle school level. The math proficiency rates for all student service groups were at or above 60.3 percent at the elementary level and at or above 38.7 percent at the middle school level. Science proficiency rates for all student services groups were at or above 30.0 percent at elementary and 42.1 percent at the middle school level (Tables 5 and 6).

At both the elementary and middle school level, across all three content areas, students receiving FARMS outperformed the other two special services groups.

Table 5
Percent of Elementary School Students Scoring at the Proficient or Advanced Level for Reading, Mathematics and Science on the MSAs and Mod-MSAs by Student Service Group

Content	Race/Ethnicity	Percent Proficient or Advanced				1-Year Change
		2010	2011	2012	2013*	
Reading	All Students	92.8	94.0	94.1	93.9	-0.2
	FARMS	80.3	84.5	83.8	83.5	-0.3
	LEP	71.5	74.1	78.1	72.4	-5.7
	Special Education	64.3	71.4	70.7	69.5	-1.2
Math	All Students	91.7	92.7	93.8	92.2	-1.6
	FARMS	76.7	79.6	83.7	79.0	-4.7
	LEP	74.8	78.3	82.9	75.4	-7.5
	Special Education	65.2	68.2	67.2	60.3	-6.9
Science	All Students	78.5	76.7	78.3	79.1	0.8
	FARMS	48.0	44.3	48.1	52.3	4.2
	LEP	24.8	26.1	27.0	30.0	3.0
	Special Education	35.3	39.9	36.1	36.6	0.5

Note. Change is calculated from unrounded proficiency rates.

FARMS = Free and Reduced-Price Meal Services; LEP = Limited English Proficiency.

*MSDE did not administer the Reading and Math Mod-MSA in 2013.

**Beginning in 2010, Reading and Math Mod-MSA assessments were administered to eligible students receiving special education services in Grades 3, 4, and 5 and are included in 2010-2012 statistics.

Declines from 2012 to 2013 in the percent of students attaining proficient or advanced status were evident. All three special services groups showed a decline in reading and math at the elementary level. At the elementary school level, science evidenced subtle increases for each

group between 2012 and 2013 (Table 5). The largest declines were seen in the area of middle school math, where proficient rates declined 11.2 percentage points (FARMS), 13.6 percentage points (LEP), and 19.9 percentage points (special education). Middle school science evidenced a decline in LEP (4.2 percentage points) and special education (6.0 percentage points) (Table 6).

Table 6
Percent of Middle School Students Scoring at the Proficient or Advanced Level
for Reading, Mathematics and Science on the MSAs and Mod-MSAs by Student Service Group

Content	Race/Ethnicity	Percent Proficient or Advanced				1-Year Change
		2010	2011	2012	2013*	
Reading	All Students	90.8	92.6	90.9	91.6	0.7
	FARMS	73.8	79.2	74.8	76.1	1.3
	LEP	56.5	46.3	49.4	53.0	3.6
	Special Education	56.5	64.3	59.2	52.4	-6.8
Math	All Students	87.1	87.3	89.1	84.2	-4.9
	FARMS	64.5	66.8	70.8	59.6	-11.2
	LEP	59.1	57.3	66.4	52.8	-13.6
	Special Education	51.9	55.9	58.6	38.7	-19.9
Science	All Students	86.4	87.1	86.4	87.3	0.9
	FARMS	57.1	63.3	63.7	63.8	0.1
	LEP	35.6	34.5	46.3	42.1	-4.2
	Special Education	45.1	46.1	49.2	43.2	-6.0

Note. Change is calculated from unrounded proficiency rates.

FARMS = Free and Reduced-Price Meal Services; LEP = Limited English Proficiency.

*MSDE did not administer the Reading and Math Mod-MSA in 2013.

**Beginning in 2009, Reading and Math Mod-MSA assessments were administered to eligible students receiving special education services in Grades 6, 7, and 8 and are included in 2009-2012 statistics.

Comparisons Across the State

When looking at district performance in Maryland at the advanced level (Table 7), HCPSS ranks 1st for both elementary and middle school reading, ranks 2nd for both elementary and middle school mathematics, ranks 3rd for elementary science and 1st for middle school science. For students scoring proficient or advanced, HCPSS ranks 2nd for both elementary and middle school reading, ranks 3rd for elementary mathematics, 5th for middle school mathematics, 3rd for elementary science, and 1st for middle school science when compared with other districts in the state. Worcester County is the top performer in the state at both the elementary and middle school levels for reading and mathematics, but with fewer than 7,000 students their small size and difference in demographics does not afford an adequate benchmarking measure for the HCPSS.

When benchmarked against Anne Arundel (AACPS), Baltimore (BCPS), Frederick (FCPS), and Montgomery (MCPS), HCPSS outperforms the other districts in the areas of reading and math at both the elementary and middle school level for all students, at both the advanced level and proficient/advanced level. HCPSS outperformed the other districts in science at the elementary and middle school levels for students performing at the proficient/advanced level and for middle school students at the advanced level.

Table 7
Percent and Rank of Elementary and Middle School Students Scoring at the Advanced and Proficient/Advanced Levels on the MSAs for Reading, Mathematics and Science by District in 2013

Level	Content	District	Advanced		Proficient or Advanced	
			Percent	Rank	Percent	Rank
Elementary	Reading	Howard	53.0	1	93.9	2
		Anne Arundel	44.4	4	91.8	7
		Baltimore	39.6	10	89.4	10
		Frederick	41.6	9	92.3	5
		Montgomery	42.6	8	89.7	9
		All Public Schools	36.1		86.4	
	Mathematics	Howard	49.7	2	92.2	3
		Anne Arundel	45.5	4	91.1	5
		Baltimore	38.5	7	88.0	9
		Frederick	33.8	13	87.6	10
		Montgomery	37.0	10	84.5	15
		All Public Schools	33.6		83.9	
	Science	Howard	14.7	3	79.1	3
		Anne Arundel	16.3	2	77.0	5
		Baltimore	10.2	15	66.6	18
		Frederick	13.6	8	76.9	6
		Montgomery	14.1	6	72.4	15
		All Public Schools	10.6		67.0	
Middle	Reading	Howard	61.8	1	91.6	2
		Anne Arundel	52.3	8	87.7	10
		Baltimore	43.4	14	82.2	16
		Frederick	53.1	7	89.4	6
		Montgomery	58.4	3	89.4	7
		All Public Schools	45.9		83.4	
	Mathematics	Howard	43.3	2	84.2	5
		Anne Arundel	26.8	13	73.8	16
		Baltimore	24.3	16	71.3	18
		Frederick	31.5	11	78.7	11
		Montgomery	37.0	5	77.9	12
		All Public Schools	27.7		72.3	
	Science	Howard	14.0	1	87.3	1
		Anne Arundel	9.9	5	79.8	9
		Baltimore	5.6	13	73.4	15
		Frederick	5.3	15	80.1	8
		Montgomery	11.3	2	77.7	12
		All Public Schools	6.7		71.4	

Note: Ranking includes all 24 Maryland Public School Districts.
Percents are rounded to the tenths place. Rankings are based on unrounded numbers.
*MSDE did not administer the Reading and Math Mod-MSA in 2013.

For students performing at the proficient/advanced levels, in elementary reading and math, HCPSS outperformed the benchmarked districts for all race/ethnicity student groups with the exception of Hispanic students. At the middle school level, HCPSS outperforms the benchmarked districts in all content areas for Hispanic and Two or More Race students. For science at both the elementary and middle school levels, HCPSS outperformed the other districts for Black/African American students. See Appendices A6-A9 for more information on student performance by proficiency level and by race/ethnicity for HCPSS and benchmarked districts.

Summary and Next Steps

Students in HCPSS are performing at high levels in reading, math, and science at both the elementary and middle school levels. Over the course of the 10 years that the MSA has been administered, trend data show an increase over time for all students. Most notably is the increase over time of the percent of students now performing at the advanced level on the MSA. While MSA scores in HCPSS did decline from 2012 to 2013, this decline was noted throughout the state. Despite the strong performance of students overall, gaps persist for several student groups, and targeted and aligned work needs to continue to address these gaps and ensure that all students are receiving a world class educational experience preparing them for career and college success.

Considerations when examining these data include the following:

- The MSA is no longer aligned with the current curriculum being taught. The HCPSS has been transitioning to new reading and mathematics curricula aligned to the Common Core State Standards, which show great promise for ensuring students are equipped with 21st century skills. However, the tests aligned to these new curricula, the PARCC assessments, are still being developed. The 2013 MSA tests do not align with the new curricula, especially in mathematics, and consequently, students are being tested on some topics they were not taught during the 2012-2013 school year.
- In 2013, the Modified Maryland School Assessment (Mod-MSA), was discontinued and no longer administered to students receiving special education services. The elimination of the Mod-MSA may have contributed to the decrease in the percentage of students in the special education student group achieving at the proficient level on the MSA.
- While MSA is used for accountability, it should be one of many data points incorporated for school and system improvement purposes. HCPSS aspires to be a world class school system and the vision articulated in the new HCPSS *Strategic Plan, Vision 2018*, focuses on using multiple data points to ensure success for every student.

We will continue to further examine our data for all of our student groups, and will ensure that students receive the supports they need. As we expand our use of the Measures of Academic Progress (MAP) assessment we will rely on the valuable data generated to guide our instruction. As the Common Core Curriculum continues to be implemented, we eagerly await the new, aligned PARCC assessments to provide feedback and evaluate our students' mastery of the instruction they are receiving.

Appendix A1

Percent of Elementary and Middle School Students Scoring at the Proficient or Advanced Levels for Reading, Mathematics and Science on the MSAs and Mod-MSAs by Grade, 2003 to 2013

Percent Proficient or Advanced													Change in Proficiency Rates Since Baseline**
Grade Level	Content	2003	2004	2005	2006	2007	2008	2009	2010	2011	2012	2013*	
3	Reading	79.4	88.0	88.0	87.6	88.9	90.2	91.2	90.2	92.2	91.7	91.6	12.2
	Math	82.9	87.0	86.3	87.9	86.2	88.6	89.5	90.9	93.0	93.8	91.5	8.5
4	Reading		90.8	92.3	91.7	93.0	94.2	93.5	93.3	94.4	≥95	94.8	4.0
	Math		84.6	88.3	89.6	91.4	92.0	92.1	94.0	≥95	≥95	94.3	9.7
5	Reading	84.2	86.5	88.6	88.8	88.7	93.8	94.3	94.8	≥95	≥95	≥95	≥11.0
	Math	78.9	83.1	85.1	87.3	88.1	88.1	87.5	90.1	90.3	92.6	90.9	12.0
	Science					78.0	77.5	76.4	78.5	76.7	78.3	79.1	1.1
6	Reading		86.5	87.8	87.6	87.0	89.8	91.4	91.7	92.0	91.5	91.2	4.7
	Math		72.1	79.7	83.5	85.1	87.6	88.2	89.6	90.3	91.6	86.7	14.6
7	Reading		85.6	86.7	86.8	84.6	90.5	92.1	90.2	92.6	90.6	92.7	7.1
	Math		71.4	78.1	81.0	79.2	83.6	87.9	87.1	87.8	90.0	83.9	12.5
8	Reading	80.7	82.2	85.4	85.2	83.4	86.9	90.9	90.6	93.0	90.6	90.8	10.1
	Math	62.9	62.2	72.4	76.5	77.3	79.7	84.7	84.5	84.1	85.9	82.1	19.2
	Science					82.8	82.9	85.6	86.4	87.1	86.4	87.3	4.5

Note. Change is calculated from unrounded proficiency rates.

* MSDE did not administer the Reading and Math Mod-MSA in 2013.

**Beginning in 2009, Reading and Math Mod-MSA assessments were administered to eligible students receiving special education services in Grades 6, 7, and 8 and are included in 2009-2012 statistics. Beginning in 2010, Reading and Math Mod-MSA assessments were administered to eligible students receiving special education services in Grades 3, 4, and 5 and are included in 2010-2012 statistics.

***MSDE did not administer the MSA in Grades 4, 6, and 7 in 2003; therefore, gains for these grade levels are measured from 2004.

****MSDE did not administer the Science MSA until 2007; therefore, gains for the Science MSA are measured from 2007.

Appendix A2
 Percent of Elementary and Middle School Students Scoring at the Advanced Level
 for Reading, Mathematics and Science on the MSAs and Mod-MSAs by Level

		Percent Advanced											Change in Proficiency Rates Since Baseline**
Level	Content	2003	2004	2005	2006	2007	2008	2009	2010	2011	2012	2013*	
ES	Reading	33.4	37.2	38.9	40.3	43.2	48.3	48.7	50.4	50.3	51.5	53.0	19.6
	Math	27.2	32.4	38.8	39.5	40.8	42.0	43.4	48.9	49.5	55.7	49.7	22.5
	Science					13.5	15.1	12.1	16.9	15.3	15.3	14.7	1.2
MS	Reading	46.2	47.1	49.7	47.4	45.8	57.1	57.4	61.6	62.8	60.9	61.8	15.6
	Math	25.8	24.2	29.4	34.2	37.9	44.0	44.2	44.5	46.8	49.2	43.3	17.5
	Science					9.0	10.7	14.9	16.0	16.8	15.9	14.0	4.9

Note. Change is calculated from unrounded proficiency rates.

*MSDE did not administer the Reading and Math Mod-MSA in 2013.

**Beginning in 2009, Reading and Math Mod-MSA assessments were administered to eligible students receiving special education services in Grades 6, 7, and 8 and are included in 2009-2012 statistics. Beginning in 2010, Reading and Math Mod-MSA assessments were administered to eligible students receiving special education services in Grades 3, 4, and 5 and are included in 2010-2012 statistics.

***MSDE did not administer the MSA in Grades 4, 6, and 7 in 2003; therefore, gains for these grade levels are measured from 2004.

****MSDE did not administer the Science MSA until 2007; therefore, gains for the Science MSA are measured from 2007.

Appendix A3
 Percent of Elementary and Middle School Students Scoring at the Advanced Level
 for Reading, Mathematics and Science on the MSAs and Mod-MSAs by Grade, 2003 to 2013

		Percent Advanced											Change in Proficiency Rates Since Baseline**
Grade Level	Content	2003	2004	2005	2006	2007	2008	2009	2010	2011	2012	2013*	
3	Reading	18.4	27.8	31.2	24.9	34.0	27.6	33.3	33.9	31.6	30.9	37.0	18.6
	Math	30.4	33.3	40.9	36.6	36.1	33.2	38.7	45.1	48.9	54.4	44.5	14.1
4	Reading		33.3	34.0	40.0	41.8	46.1	45.5	46.4	45.1	50.8	46.0	12.7
	Math		34.7	44.6	46.6	51.2	52.6	55.5	60.4	61.6	65.6	62.8	28.1
5	Reading	48.0	50.0	51.4	54.7	53.3	69.1	66.0	71.1	74.1	73.2	75.8	27.8
	Math	24.0	29.4	30.9	35.6	35.0	39.4	36.6	40.9	38.3	47.1	41.7	17.7
	Science					13.5	15.1	12.1	16.9	15.3	15.3	14.7	1.2
6	Reading		54.6	56.1	55.7	51.4	58.0	54.5	59.4	60.1	57.3	58.0	3.4
	Math		23.3	28.5	33.8	38.3	46.2	44.8	44.2	48.4	51.6	44.1	20.8
7	Reading		47.2	50.3	44.2	45.3	60.3	63.4	61.9	61.6	63.6	64.8	17.6
	Math		20.1	28.0	31.0	31.8	38.4	38.5	39.3	39.7	43.8	37.8	17.7
8	Reading	46.2	39.5	43.0	42.7	40.5	52.8	54.4	63.4	66.6	61.9	62.5	16.3
	Math	25.8	29.3	31.5	37.8	43.4	47.9	48.8	50.0	52.5	52.0	48.3	22.5
	Science					9.0	10.7	14.9	16.0	16.8	15.9	14.0	5.0

Note. Change is calculated from unrounded proficiency rates.

*MSDE did not administer the Reading and Math Mod-MSA in 2013.

**Beginning in 2009, Reading and Math Mod-MSA assessments were administered to eligible students receiving special education services in Grades 6, 7, and 8 and are included in 2009-2012 statistics. Beginning in 2010, Reading and Math Mod-MSA assessments were administered to eligible students receiving special education services in Grades 3, 4, and 5 and are included in 2010-2012 statistics.

***MSDE did not administer the MSA in Grades 4, 6, and 7 in 2003; therefore, gains for these grade levels are measured from 2004.

****MSDE did not administer the Science MSA until 2007; therefore, gains for the Science MSA are measured from 2007.

Appendix A4
 Percent of Elementary School Students Scoring at the Advanced Level
 for Reading, Mathematics and Science on the MSAs and Mod-MSAs by Race/Ethnicity

Content	Race/Ethnicity	Percent Advanced				1-Year Change
		2010	2011	2012	2013*	
Reading	All Students	50.4	50.3	51.5	53.0	1.5
	Asian	59.4	59.6	61.4	63.1	1.7
	Black or African American	29.7	29.7	32.4	34.7	2.3
	Hispanic/Latino	34.3	31.2	34.0	34.4	0.4
	Two or More Races	52.1	51.8	52.4	55.2	2.8
	White	59.1	59.5	59.9	60.8	0.9
Math	All Students	48.9	49.5	55.7	49.7	-6.0
	Asian	67.4	68.4	73.8	69.4	-4.4
	Black or African American	23.5	23.9	31.3	27.0	-4.3
	Hispanic/Latino	29.8	31.0	37.3	30.1	-7.2
	Two or More Races	48.6	52.6	56.9	52.3	-4.6
	White	57.2	57.1	63.6	55.5	-8.1
Science	All Students	16.9	15.3	15.3	14.7	-0.6
	Asian	22.4	22.7	21.8	24.7	2.9
	Black or African American	4.8	2.6	4.2	4.0	-0.2
	Hispanic/Latino	7.6	6.0	6.1	7.1	1.0
	Two or More Races	18.1	17.9	17.7	12.7	-5.0
	White	22.0	19.4	19.9	17.4	-2.5

Note. Change is calculated from unrounded proficiency rates.

* MSDE did not administer the Reading and Math Mod-MSA in 2013.

**Beginning in 2009, Reading and Math Mod-MSA assessments were administered to eligible students receiving special education services in Grades 6, 7, and 8 and are included in 2009-2012 statistics. Beginning in 2010, Reading and Math Mod-MSA assessments were administered to eligible students receiving special education services in Grades 3, 4, and 5 and are included in 2010-2012 statistics.

Appendix A5
 Percent of Middle School Students Scoring at the Advanced Level
 for Reading, Mathematics and Science on the MSAs and Mod-MSAs by Race/Ethnicity

Content	Race/Ethnicity	Percent Advanced				1 Year Change
		2010	2011	2012	2013*	
Reading	All Students	61.6	62.8	60.9	61.8	0.9
	Asian	74.7	73.8	72.1	74.7	2.6
	Black or African American	40.5	40.8	39.9	39.3	-0.6
	Hispanic/Latino	44.1	47.2	44.1	42.8	-1.3
	Two or More Races	62.7	64.5	64.0	66.0	2.0
	White	69.2	71.5	69.5	70.6	1.1
Math	All Students	44.5	46.8	49.2	43.3	-5.9
	Asian	65.9	69.2	69.9	67.6	-2.3
	Black or African American	18.7	20.1	21.6	17.5	-4.1
	Hispanic/Latino	27.0	28.3	29.6	24.4	-5.2
	Two or More Races	44.3	45.4	48.7	41.5	-7.2
	White	51.8	54.8	58.5	50.3	-8.2
Science	All Students	16.0	16.8	15.9	14.0	-1.9
	Asian	24.4	25.4	25.8	23.0	-2.8
	Black or African American	4.2	4.4	3.7	2.3	-1.4
	Hispanic/Latino	7.4	5.7	8.9	7.5	-1.4
	Two or More Races	15.0	13.9	17.8	12.1	-5.7
	White	19.7	21.5	19.6	17.7	-1.9

Note. Change is calculated from unrounded proficiency rates.

* MSDE did not administer the Reading and Math Mod-MSA in 2013.

**Beginning in 2009, Reading and Math Mod-MSA assessments were administered to eligible students receiving special education services in Grades 6, 7, and 8 and are included in 2009-2012 statistics. Beginning in 2010, Reading and Math Mod-MSA assessments were administered to eligible students receiving special education services in Grades 3, 4, and 5 and are included in 2010-2012 statistics.

Appendix A6
Percent of Elementary School Students Scoring at the Proficient or Advanced Level
for Reading, Mathematics and Science on the MSAs by Race/Ethnicity and by LEA

Content	Race/Ethnicity	Percent Proficient or Advanced					
		AACPS	BCPS	FCPS	HCPSS	MCPS	All MD
Math	All Students	91.1	88.0	87.6	92.2	84.5	83.9
	Black or African American	81.5	81.1	74.6	82.2	72.9	74.0
	Asian	94.9	95.4	93.1	97.7	94.5	94.8
	Hispanic	87.6	85.8	78.4	85.0	73.7	77.9
	Two or More Races	91.8	89.1	84.7	93.4	89.1	87.7
	White	94.6	92.9	91.3	95.9	94.5	91.9
Read	All Students	91.8	89.4	92.3	93.9	89.7	86.4
	Black or African American	83.8	83.6	84.4	86.6	83.0	77.9
	Asian	94.2	92.9	95.0	97.6	95.1	94.5
	Hispanic	87.0	87.1	87.7	86.8	82.0	81.8
	Two or More Races	91.8	91.6	92.1	95.1	93.8	90.3
	White	95.0	93.9	94.2	97.0	96.5	93.1
Science	All Students	77.0	66.6	76.9	79.1	72.4	67.0
	Black or African American	54.8	49.4	53.7	58.8	53.8	48.2
	Asian	84.3	81.6	89.8	88.8	85.7	84.8
	Hispanic	66.1	57.6	62.1	61.4	54.1	56.7
	Two or More Races	76.8	71.8	71.3	83.2	85.0	75.3
	White	85.8	80.1	82.6	87.7	89.7	81.9

Note. Change is calculated from unrounded proficiency rates.

* MSDE did not administer the Reading and Math Mod-MSA in 2013.

Appendix A7
 Percent of Elementary School Students Scoring at the Advanced Level
 for Reading, Mathematics and Science on the MSAs by Race/Ethnicity and by LEA

Content	Race/Ethnicity	Percent Advanced					
		AACPS	BCPS	FCPS	HCPSS	MCPS	All MD
Math	All Students	45.5	38.5	33.8	49.7	37.0	33.6
	Black/African American	22.9	23.7	16.7	27.0	18.3	18.5
	Asian	63.7	60.9	52.8	69.4	59.7	60.1
	Hispanic	32.9	29.1	20.5	30.1	17.2	21.4
	Two or More Races	44.4	39.2	32.3	52.3	44.8	38.3
	White	54.2	49.0	37.6	55.5	52.1	45.3
Read	All Students	44.4	39.6	41.6	53.0	42.6	36.1
	Black/African American	25.2	26.0	24.4	34.7	26.2	21.5
	Asian	50.6	52.1	52.5	63.1	56.4	54.8
	Hispanic	30.3	28.7	29.0	34.4	23.8	23.6
	Two or More Races	44.5	41.7	36.7	55.2	51.6	41.5
	White	52.7	50.6	46.2	60.8	59.3	48.5
Science	All Students	16.3	10.2	13.6	14.7	14.1	10.6
	Black/African American	3.9	2.3	3.3	4.0	2.3	2.9
	Asian	19.6	22.0	27.7	24.7	26.7	23.9
	Hispanic	8.2	5.1	5.2	7.1	3.6	4.7
	Two or More Races	14.6	8.2	10.8	12.7	19.5	11.8
	White	21.8	16.4	15.9	17.4	23.0	16.7

Note. Change is calculated from unrounded proficiency rates.

* MSDE did not administer the Reading and Math Mod-MSA in 2013.

Appendix A8
 Percent of Middle School Students Scoring at the Proficient or Advanced Level
 for Reading, Mathematics and Science on the MSAs by Race/Ethnicity and by LEA

Content	Race/Ethnicity	Percent Proficient or Advanced					
		AACPS	BCPS	FCPS	HCPSS	MCPS	All MD
Math	All Students	73.8	71.3	78.7	84.2	77.9	72.3
	Black/African American	52.7	58.3	57.1	65.5	62.0	56.3
	Asian	88.8	88.5	89.7	94.5	92.6	91.6
	Hispanic	63.6	68.0	67.3	70.9	62.8	64.1
	Two or More Races	75.5	74.0	77.2	84.5	83.5	78.4
	White	81.7	82.0	83.1	91.7	91.8	84.5
Read	All Students	87.7	82.2	89.4	91.6	89.4	83.4
	Black/African American	76.7	75.1	77.6	82.0	82.3	73.3
	Asian	91.6	90.3	94.1	95.6	95.6	93.9
	Hispanic	82.0	79.8	82.7	83.8	80.8	79.0
	Two or More Races	88.5	85.4	86.9	93.8	92.9	88.3
	White	92.1	88.2	92.1	95.8	96.8	91.1
Science	All Students	79.8	73.4	80.1	87.3	77.7	71.4
	Black/African American	62.8	61.0	55.6	71.5	63.6	53.1
	Asian	82.5	85.5	85.0	93.4	91.0	89.2
	Hispanic	68.8	69.8	65.5	78.1	60.4	60.9
	Two or More Races	79.9	74.8	73.6	85.7	83.9	79.7
	White	87.3	84.6	85.9	94.3	92.8	86.0

Note. Change is calculated from unrounded proficiency rates.

* MSDE did not administer the Reading and Math Mod-MSA in 2013.

Appendix A9
 Percent of Middle School Students Scoring at the Advanced Level
 for Reading, Mathematics and Science on the MSAs by Race/Ethnicity and by LEA

Content	Race/Ethnicity	Percent Advanced					
		AACPS	BCPS	FCPS	HCPSS	MCPS	All MD
Math	All Students	26.8	24.3	31.5	43.3	37.0	27.7
	Black/African American	8.6	11.2	10.4	17.5	15.6	12.3
	Asian	44.9	49.9	55.4	67.6	63.2	59.2
	Hispanic	16.1	16.3	16.7	24.4	15.4	16.5
	Two or More Races	25.4	25.6	27.6	41.5	47.8	32.6
	White	33.9	34.8	35.6	50.3	53.3	38.8
Read	All Students	52.3	43.4	53.1	61.8	58.4	45.9
	Black/African American	31.3	31.0	30.9	39.3	41.2	29.0
	Asian	63.8	62.5	64.9	74.7	74.6	70.2
	Hispanic	38.3	34.9	39.7	42.8	35.4	34.0
	Two or More Races	50.5	47.5	50.5	66.0	68.4	53.4
	White	61.3	53.9	58.0	70.6	77.5	59.3
Science	All Students	9.9	5.6	5.3	14.0	11.3	6.7
	Black/African American	2.2	1.2	0.6	2.3	2.7	1.2
	Asian	12.6	12.4	17.9	23.0	19.9	17.4
	Hispanic	4.5	1.2	2.2	7.5	3.1	2.7
	Two or More Races	7.9	6.7	3.1	12.1	17.0	8.9
	White	13.4	9.5	5.8	17.7	18.5	10.8

Note. Change is calculated from unrounded proficiency rates.

* MSDE did not administer the Reading and Math Mod-MSA in 2013.

Appendix A10
Percent of Elementary School Students Scoring at the Proficient or Advanced and Advanced Level
on the 2013 MSA by Content Area and by School

School Name	Percent Proficient or Advanced			Percent Advanced		
	Math	Reading	Science	Math	Reading	Science
All HCPSS ES	92.2	93.9	79.1	49.7	53.0	14.7
Atholton ES	94.1	94.6	77.8	49.3	51.7	11.1
Bellows Spring ES	94.0	93.6	79.3	50.1	51.5	13.3
Bollman Bridge ES	85.3	90.5	57.3	27.8	29.4	≤5.0
Bryant Woods ES	78.3	82.2	55.9	19.4	29.4	6.8
Bushy Park ES	≥ 95.0	≥ 95.0	87.6	46.7	54.8	9.1
Centennial Lane ES	≥ 95.0	≥ 95.0	85.4	71.1	74.3	24.1
Clarksville ES	≥ 95.0	≥ 95.0	93.7	66.2	64.8	29.5
Clemens Crossing ES	≥ 95.0	≥ 95.0	90.1	66.7	71.8	22.0
Cradlerock ES	82.5	89.8	73.5	28.2	47.1	9.6
Dayton Oaks	≥ 95.0	≥ 95.0	90.1	59.9	59.8	19.8
Deep Run ES	86.9	92.8	76.7	47.4	42.0	6.7
Elkridge ES	85.9	91.2	71.6	31.3	40.8	5.6
Forest Ridge ES	87.4	92.1	60.9	37.4	42.1	≤5.0
Fulton ES	94.3	≥ 95.0	87.8	55.6	59.2	27.6
Gorman Crossing ES	93.8	93.4	80.0	52.8	53.5	16.5
Guilford ES	89.8	90.2	68.0	32.8	39.6	6.7
Hammond ES	91.8	92.2	70.8	52.0	52.6	6.3
Hollifield Station ES	92.5	92.8	77.7	57.2	52.7	17.0
Ilchester ES	94.8	≥ 95.0	89.0	48.8	57.6	7.0
Jeffers Hill ES	85.7	90.9	72.6	38.3	45.1	6.5
Laurel Woods ES	84.6	87.2	58.6	34.2	34.6	≤5.0
Lisbon ES	92.5	94.7	89.0	43.0	53.9	13.7
Longfellow ES	82.3	88.0	62.7	33.3	40.6	≤5.0
Manor Woods ES	≥ 95.0	≥ 95.0	91.0	65.6	64.1	23.0
Northfield ES	≥ 95.0	≥ 95.0	90.6	65.7	72.5	29.2
Phelps Luck ES	87.0	89.4	68.5	39.9	40.5	8.3
Pointers Run ES	≥ 95.0	≥ 95.0	92.1	58.0	63.6	29.1
Rockburn ES	≥ 95.0	93.8	87.7	56.5	57.1	23.1
Running Brook ES	89.8	89.4	50.7	29.6	37.2	≤5.0
St. Johns Lane ES	≥ 95.0	≥ 95.0	92.2	63.8	73.0	17.2
Stevens Forest ES	88.8	88.2	64.3	48.0	37.5	7.1
Swansfield ES	87.3	89.9	58.5	39.3	40.8	≤5.0
Talbott Springs ES	81.4	82.2	62.0	34.7	33.1	11.3
Thunder Hill ES	≥ 95.0	≥ 95.0	89.2	55.6	65.7	24.3
Triadelphia Ridge ES	≥ 95.0	≥ 95.0	≥ 95.0	64.8	74.6	29.6
Veterans ES	94.1	≥ 95.0	79.0	53.0	49.2	18.0
Waterloo ES	93.3	94.1	79.1	46.3	55.6	13.2
Waverly ES	≥ 95.0	≥ 95.0	93.5	66.2	64.2	17.8
West Friendship ES	≥ 95.0	≥ 95.0	85.1	63.0	59.4	25.5
Worthington ES	≥ 95.0	≥ 95.0	≥ 95.0	50.8	52.0	18.7

Appendix A11
 Percent of Middle School Students Scoring at the Proficient or Advanced and Advanced Level
 on the 2013 MSA by Content Area and by School

School Name	Percent Proficient or Advanced			Percent Advanced		
	Math	Reading	Science	Math	Reading	Science
Patuxent Valley MS	74.1	83.8	78.8	24.7	44.9	≤5.0
Mayfield Woods MS	82.5	89.7	82.2	36.6	53.1	5.2
Lake Elkhorn MS	57.8	78.7	74.7	15.9	38.4	5.5
Wilde Lake MS	66.5	84.5	73.5	21.4	48.8	5.6
Harpers Choice MS	72.0	87.5	72.6	30.4	48.9	6.0
Murray Hill MS	86.5	87.8	78.9	36.0	51.7	6.6
Hammond MS	88.1	93.5	91.5	48.4	64.8	8.0
Bonnie Branch MS	83.5	91.1	91.0	44.2	59.8	10.8
Elkridge Landing MS	78.5	90.1	86.3	31.9	52.9	11.5
Oakland Mills MS	66.8	84.5	74.2	23.7	47.5	12.1
All Howard Schools	84.2	91.6	87.3	43.3	61.8	14.0
Ellicott Mills MS	88.9	94.4	91.9	51.0	69.8	15.4
Dunloggin MS	87.0	≥ 95.0	91.9	41.8	69.9	18.4
Clarksville MS	≥ 95.0	≥ 95.0	≥ 95.0	65.4	79.2	19.5
Glenwood MS	93.8	≥ 95.0	≥ 95.0	49.8	68.4	19.9
Lime Kiln MS	92.2	≥ 95.0	93.0	49.5	76.7	21.4
Mount View MS	≥ 95.0	≥ 95.0	94.8	58.3	71.7	21.6
Patapsco MS	90.8	94.4	93.8	54.7	65.3	22.3
Burleigh Manor MS	92.1	≥ 95.0	94.7	61.0	77.6	23.6
Folly Quarter MS	≥ 95.0	≥ 95.0	≥ 95.0	65.2	76.8	26.3